

# GOLDEN FUTURE



# EMBRYO SALE

*Hosted by GMS*

*October 28, 2023 on [Cowbuyer.com](https://www.cowbuyer.com)*

# **GOLDEN FUTURE EMBRYO SALE**

*hosted by Guernsey Marketing Service*

**October 28, 2023 on Cowbuyer.com**

*Bidding closes 8:00pm EST on October 28.*

- All sales are final.
- Payment is due at the end of the sale.
- A 3% convenience fee will be charged for all credit card payments.
- Confirmation of payment will be sent to consignor and purchaser within one week of sale.
- No embryos will ship prior to a full payment being received.
- Buyer is responsible for the coordination, cost, and liability of shipment.
- All embryos are for domestic shipment only unless otherwise specified.
- Final bid must meet the seller's reserve price to be considered sold.
- Check each lot for additional terms.

## **Sales Staff**

*Guernsey Marketing Service*

Robin Alden 614.339.5390

ralden@usguernsey.com

*Payment - Guernsey Marketing Service*

Rita Rittgers 614.339.5396

accounting@usguernsey.com

*Monday - Thursday, 9:00am - 2:00pm EST*

*Cowbuyer*

Aaron Ray Tompkins 336.363.4639



**View and bid online at  
[www.cowbuyer.com](http://www.cowbuyer.com)**

**Aaron Ray Tompkins 336.363.4639**



**Buyers must be pre-registered.**

Auction opens the week of Oct. 23 and closes

Oct. 28 with an auto-extend soft close.

Contact Robin Alden if you are unable to monitor the auction during this time:  
614.339.5390 | ralden@usguernsey.com



**Diva!**

Unanimous All-American Aged Cow 2018  
 Unanimous All-American Lifetime Production Cow 2021  
 Member, All-American Dam & Daughter 2018 & 2021  
 Reserve All-American Four-Year-Old 2016  
 Honorable Mention All-American Five-Year-Old 2017  
 Nominated All-American Junior Three-Year-Old 2015  
 Grand Champion NGS-Louisville 2018  
 Reserve Grand Champion NGS-Madison 2018  
 Dam of DRONE - Premier Sire 2023 World Dairy Expo!

**Hi Guern View Dancing Diva-ET EX-96**  
 203,180M 4.6% 9,322F 3.6% 7,296P Lifetime  
 Dam of Lot 1; Granddam of Lot 2

**LOT 1 4 #1 VERNON X DIVA IVF EMBRYOS**

**Breeder & Owner: DINDERMAN ALAINA, AMERY + AIDAN**  
**ORANGEVILLE IL**

**815.297.4111 hiayview@hotmail.com**

PA: -51M +0.08% -11F +0.06% +9P +107CM\$ +102NM\$  
 +1.2PTAT +1.5UDC +1.8FLC -0.3DPR +1.7PL +59CPI 3.03SCS

**RHG VILLA LONDON VERNON-ETV 840003213010574 094GU0960 A2A2**

08/23 USDA GPTA +408M +0.10% +36F +0.05% +23P  
 -0.3DPR +1.3PL +305NM\$ 80NM%ile +311CM\$ 58% Rel  
 2.99SCS 0.50HCR 30% Rel -0.60CCR 36% Rel  
 -0.60LIV 31% Rel 0.60GL 42% Rel -1.00EFC 31% Rel  
 AGA 08/23 PTAT +1.2 +1.5UDC +2.8FLC 57%Rel PTI +112

**HI GUERN VIEW DANCING DIVA-ET USA000068047311 A2A2**

08/23 USDA GPTA -509M +0.05% -15F +0.06% -6P  
 -0.3DPR +2.0PL -101NM\$ 16NM%ile -98CM\$ 77% Rel  
 3.07SCS -1.90HCR 41% Rel -0.50CCR 53% Rel  
 1.70LIV 42% Rel -0.20GL 57% Rel -3.80EFC 43% Rel  
 5 Rec YDev: -110M +12F +20P  
 5 App 08/23 PTAT +1.1 +1.4UDR +0.8FLC 75%Rel CPI +6  
 Appraisal: EX 96 @ 11-03 (EEEE)  
 1-11 353D 2X 19070M 4.8% 915F 3.5% 666P 95  
 3-01 318D 2X 20010M 4.7% 933F 3.4% 688P 94  
 4-00 305D 2X 19030M 4.6% 871F 3.7% 706P 95  
 5-04 319D 2X 22670M 4.6% 1034F 3.5% 803P 94  
 6-04 305D 2X 22100M 4.3% 957F 3.5% 781P 92  
 7-07 305D 2X 25620M 3.9% 1001F 3.5% 897P 94  
 8-09 365D 2X 29120M 4.4% 1282F 3.6% 1040P DHIA  
 10-06 305D 2X 25290M 4.8% 1205F 3.3% 828P\* 96  
 3070D 203180M 4.6% 9322F 3.6% 7296P LIFE

Dam of DRONE at St-Jacobs & DJ at GGS

Dtrs: HI GUERN VIEW LEVIS DENIM 91 @ 7-02 (91/88)  
 4-09 365D 2X 23790M 4.9% 1158F 3.3% 787P DHIA  
 HI GUERN VIEW DIVAS DESTINY 90 @ 4-03 (89/87)  
 3-10 349D 2X 27580M 4.4% 1206F 3.2% 891P 94  
 HI GUERN VIEW LS DINA-ETV 87 @ 3-05 (84/87)  
 2-09 309D 2X 22640M 5.7% 1282F 3.4% 768P 97  
 HI GUERN VIEW DIVAS DESIRE 90 @ 3-06 (90/87)  
 1st Sr. Three-Year-Old NJS-Harrisburg 2023  
 HI GUERN VIEW DAISY DUKE-ETV 85 @ 3-01 (84/86)

- Four (4) #1 IVF embryos
- Sexed semen used for Females
- Resulting calves will be A2A2 by parentage
- Located at TransOva in Madison, Wisconsin
- Embryos must be in buyer's possession within 60 days of sale

**EDGEWATER MEADOWS YOGIBEAR-ET USA000000604917 7GU402 A2A2**

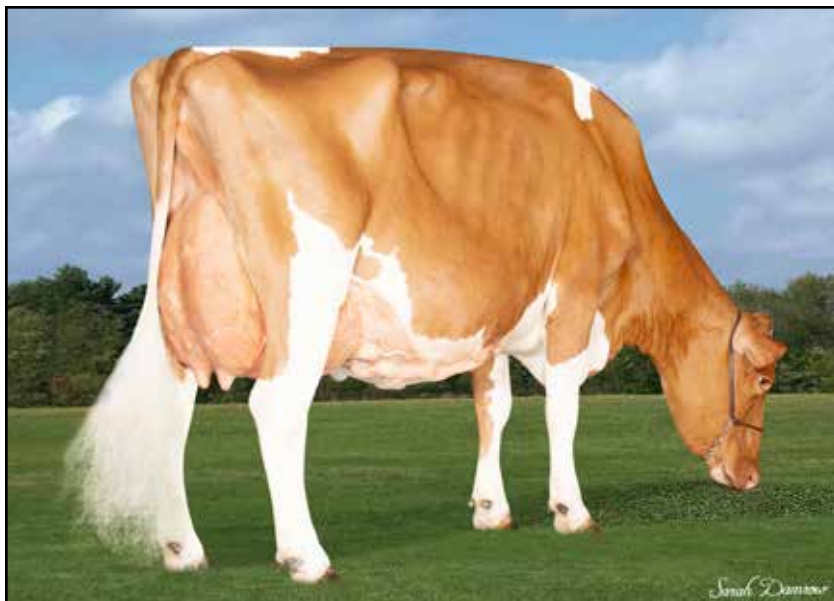
08/23 USDA GPTA -498M +0.13% +0F +0.04% -10P  
 +0.2DPR +1.2PL -36NM\$ 20NM%ile -32CM\$ 99% Rel  
 2.95SCS -1.20HCR 78% Rel -0.20CCR 95% Rel  
 0.10LIV 86% Rel -1.10GL 99% Rel -1.00EFC 87% Rel  
 AGA 08/23 PTAT +1.2 +1.4UDC +1.1FLC 99%Rel PTI +19

**ADAMS CREEK REGAL DANCER USA000068019811**

Appraisal: 92 @ 3-07 (94/86)  
 2-01 298D 2X 14210M 4.8% 689F 3.5% 491P 95  
 3-05 305D 2X 23750M 4.4% 1048F 3.3% 779P 50  
 All-American Four-Year-Old 2011  
 Honorable Mention All-American Jr. Two-Year-Old 2009  
 Reserve Senior Champion NGS-Madison & NGS-Harrisburg 2011  
 Dtrs: HI GUERN VIEW DANCERS DELITE-ET 91 @ 7-09 (91/78)  
 3-04 305D 2X 16490M 4.9% 816F 3.5% 577P 94  
 Nominated All-American Junior Three-Year-Old 2015  
 HI GUERN VIEW DANCERS DREAM-ET 90 @ 3-07 (88/87)  
 2-10 315D 2X 22390M 3.9% 879F 3.2% 721P 94  
 LAND OF LIVING A DEBUTANTE-ET 86 @ 3-11 (87/87)  
 2-07 339D 2X 18130M 4.1% 750F 3.2% 585P 91

**3D: ADAMS CREEK GLACIER DANICA USA000068007530**

Appraisal: 85 @ 4-04 (87/69)  
 3-00 310D 2X 19070M 4.8% 921F 3.3% 627P 102  
 Dtr: ADAMS CREEK TOOLITE REGAL DREAM-ET 90 @ 11-11 (90/86)  
 6-03 302D 2X 17570M 5.1% 899F 3.4% 599P DHIA



**Hi Guern View Diva Designer EX-94 2E**  
 104,210M 4.5% 4,715F 3.5% 3,674P Lifetime  
 Dam of Lot 2; Maternal Sister to Lot 1

**Designer!**

Unanimous All-American Jr. 3-Year-Old 2018  
 Unanimous Junior All-American Jr. 3-Year-Old 2018  
 Junior All-American & HM All-American Aged Cow 2021  
 Member, All-American Dam & Daughter 2018 & 2021  
 Grand Champion NJS-Madison 2018  
 Intermediate Champion NJS- & NGS-Madison 2018  
 Reserve Senior Champion NJS-Madison 2021 & 2023  
 Dam of DESIGN at Guernsey Gold Sires  
 Dam of DENZEL at Semex

**LOT 2 4 #1 JAMES DEAN X DESIGNER IVF EMBRYOS**

**Breeder & Owner: DINDERMAN ALAINA, AMERY + AIDAN  
 ORANGEVILLE IL**

**815.297.4111 hiayrview@hotmail.com**

PA: -371M +0.07% -5F +0.04% -6P +1CM\$ -3NM\$  
 +1.1PTAT +1.5UDC +1.8FLC -0.8DPR +2.1PL +25CPI 2.99SCS

**SPRINGHILL JAMES DEAN-ETV 840003151591428 551GU911 A2A2**

08/23 USDA GPTA -371M +0.15% +9F +0.08% +2P  
 -1.3DPR +2.0PL +105NM\$ 40NM%ile +116CM\$ 58% Rel  
 2.82SCS -1.60HCR 33% Rel -2.30CCR 34% Rel  
 1.50LIV 29% Rel 0.00GL 42% Rel -3.80EFC 30% Rel  
 AGA 08/23 PTAT +1.1 +1.8UDC +2.0FLC 57%Rel PTI +50

**HI GUERN VIEW DIVA DESIGNER USA000078005623 A2A2**

08/23 USDA GPTA -371M -0.01% -18F +0.00% -13P  
 -0.3DPR +2.2PL -110NM\$ 15NM%ile -114CM\$ 69% Rel  
 3.15SCS -1.30HCR 37% Rel -1.60CCR 45% Rel  
 1.30LIV 37% Rel -0.30GL 46% Rel 0.20EFC 39% Rel

4 Rec YDev: -439M -13F -8P  
 4 App 08/23 PTAT +1.1 +1.1UDR +1.6FLC 64%Rel CPI +0

Appraisal: EX 94 @ 7-00 (EEEE) 2E

2-00 305D 2X 14990M 4.7% 702F 3.1% 471P 93  
 3-03 305D 2X 16620M 4.3% 708F 3.4% 572P 92  
 4-07 305D 2X 22600M 4.5% 1018F 3.4% 771P 95  
 5-10 365D 2X 22400M 4.3% 955F 3.5% 782P DHIA  
 1935D 104210M 4.5% 4715F 3.5% 3674P LIFE

Dtrs: HI GUERN VIEW DESIGNER DECOR-ET 88 @ 5-02 (90/80)

4-06 354D 2X 20560M 4.5% 921F 3.0% 624P DHIA

Nominated Junior All-American Fall Calf 2018

HI GUERN VIEW LIFES A DANCE 88 @ 3-02 (87/88)

3-08 346D 3X 21500M 4.4% 955F 3.5% 751P 91

HI GUERN VIEW VENGNCE DEAD ON 83 @ 2-04 (81/83)

- Four (4) #1 IVF embryos
- Sexed semen used for Females
- Resulting calves will be A2A2 by parentage
- Located at TransOva in Madison, Wisconsin
- Embryos must be in buyer's possession within 60 days of sale

**MARODORE AARONS LEVI-ET USA000068025119 7GU438 A2A2**

08/23 USDA GPTA -188M -0.04% -15F -0.04% -13P  
 +0.4DPR +2.5PL -34NM\$ 20NM%ile -39CM\$ 97% Rel  
 3.05SCS 0.20HCR 70% Rel -0.80CCR 90% Rel  
 0.70LIV 71% Rel -0.60GL 99% Rel 3.60EFC 77% Rel  
 AGA 08/23 PTAT +0.9 +0.5UDC +1.7FLC 97%Rel PTI +3

**HI GUERN VIEW DANCING DIVA-ET USA000068047311 A2A2**

Appraisal: EX 96 @ 11-03 (EEEE)

1-11 353D 2X 19070M 4.8% 915F 3.5% 666P 95  
 3-01 318D 2X 20010M 4.7% 933F 3.4% 688P 94  
 4-00 305D 2X 19030M 4.6% 871F 3.7% 706P 95  
 5-04 319D 2X 22670M 4.6% 1034F 3.5% 803P 94  
 6-04 305D 2X 22100M 4.3% 957F 3.5% 781P 92  
 7-07 305D 2X 25620M 3.9% 1001F 3.5% 897P 94  
 8-09 365D 2X 29120M 4.4% 1282F 3.6% 1040P DHIA  
 10-06 305D 2X 25290M 4.8% 1205F 3.3% 828P\* 96  
 3070D 203180M 4.6% 9322F 3.6% 7296P LIFE

Dam of DRONE at St-Jacobs & DJ at GGS

Dtrs: HI GUERN VIEW LEVIS DENIM 91 @ 7-02 (91/88)

4-09 365D 2X 23790M 4.9% 1158F 3.3% 787P DHIA

HI GUERN VIEW DIVAS DESTINY 90 @ 4-03 (89/87)

3-10 349D 2X 27580M 4.4% 1206F 3.2% 891P 94

HI GUERN VIEW LS DINA-ETV 87 @ 3-05 (84/87)

2-09 309D 2X 22640M 5.7% 1282F 3.4% 768P 97

HI GUERN VIEW DIVAS DESIRE 90 @ 3-06 (90/87)

1st Sr. Three-Year-Old NJS-Harrisburg 2023

HI GUERN VIEW DAISY DUKE-ETV 85 @ 3-01 (84/86)

**3D: ADAMS CREEK REGAL DANCER USA000068019811**

Appraisal: 92 @ 3-07 (94/86)

3-05 305D 2X 23750M 4.4% 1048F 3.3% 779P 50

All-American Four-Year-Old 2011

Honorable Mention All-American Jr. Two-Year-Old 2009

Reserve Senior Champion NGS-Madison & NGS-Harrisburg 2011



**Villa!**

Three-Time Total Performance Cow NGS-Puyallup  
 1st Five-Year-Old NGS-Puyallup 2016  
 24 daughters in the top 175 CPI heifers - August 2023  
 Several sons headed to A.I.

**Rozelyn Aaron Villa EX-94 2E GSD**  
 163,750M 5.4% 8,778F 3.8% 6,190P Lifetime  
 Dam of Lots 3 - 6

**LOT 3 5 #1 COIN COLLECTOR X VILLA IVF EMBRYOS**

Breeder & Owner: RHG

**BEAVER DAM WI**

715.773.2851 jcvp@charter.net

PA: +22M +0.23% +40F +0.05% +10P +466CM\$ +457NM\$  
 +1.0PTAT +1.7UDC +1.4FLC +0.5DPR +4.5PL +101CPI 2.84SCS

**DAIRYMAN COIN COLLECTOR 840003219111145 551GU916 A2A2**

08/23 USDA GPTA -190M +0.21% +27F +0.01% -4P  
 +1.5DPR +6.3PL +449NM\$ 95NM%ile +454CM\$ 56% Rel  
 2.83SCS 1.60HCR 31% Rel 1.70CCR 34% Rel  
 3.20LIV 29% Rel -0.40GL 44% Rel 6.20EFC 30% Rel  
 AGA 08/23 PTAT +0.7 +1.7UDC +0.6FLC 55%Rel PTI +76

**ROZELYN AARON VILLA USA000068042242 A2A2**

08/23 USDA GPTA +234M +0.24% +53F +0.09% +23P  
 -0.6DPR +2.6PL +465NM\$ 98NM%ile +477CM\$ 70% Rel  
 2.84SCS 0.70HCR 36% Rel -0.90CCR 45% Rel  
 -0.20LIV 41% Rel 0.80GL 40% Rel 2.70EFC 38% Rel  
 5 Rec YDev: +944M +103F +53P  
 3 App 08/23 PTAT +1.3 +1.7UDR +2.1FLC 73%Rel CPI +125  
 Appraisal: EX 94 @ 10-05 (EEEEEE) 2E Gold Star Dam - 2016  
 2-00 350D 2X 19580M 5.0% 987F 3.5% 691P 101  
 3-01 365D 2X 23380M 5.2% 1225F 3.6% 841P 101  
 4-06 331D 2X 24420M 5.2% 1269F 3.6% 891P 101  
 5-07 365D 2X 26110M 5.3% 1384F 3.8% 997P 101  
 6-09 365D 2X 23900M 5.6% 1330F 3.9% 933P 102  
 9-03 365D 2X 25010M 5.3% 1321F 3.7% 915P 99  
 2617D 163750M 5.4% 8778F 3.8% 6190P LIFE  
 Dtrs: ROZELYN GOTCHA VILLAMAE 92 @ 7-00 (92/93)  
 6-03 365D 2X 22080M 5.9% 1298F 3.8% 837P 98  
 1st Aged Cow NGS-Lynden 2022  
 ROZELYN L MAN VIANNE 93 @ 5-09 (93/90)  
 4-10 365D 2X 24920M 5.3% 1313F 4.0% 997P 83  
 Nominated All-American Five-Year-Old 2022  
 #55(T) CPI Cow - August 2023  
 ROZELYN BEAU VELLA-ET 88 @ 4-06 (90/86)

- Five (5) #1 IVF embryos
- **Qualified for export to the EU!**
- Sexed semen used for Females
- Resulting calves would rank in top 10 CPI Heifers - August 2023
- Resulting calves will be A2A2 by parentage
- Located at TransOva, WI
- Embryos must be in buyer's possession within 60 days of sale

**SNIDERS OPTION AARON-ET USA000000604670 7GU395 A2A2**

08/23 USDA GPTA +154M +0.15% +34F -0.01% +3P  
 -3.8DPR -0.3PL +102NM\$ 40NM%ile +103CM\$ 99% Rel  
 2.93SCS 0.50HCR 82% Rel -5.80CCR 96% Rel  
 -3.20LIV 87% Rel 1.50GL 99% Rel 3.50EFC 90% Rel  
 AGA 08/23 PTAT +0.8 +1.1UDC +2.1FLC 99%Rel PTI +41

**ROZELYN SAMSON VIENNA USA000068018724 A2A2**

Appraisal: 91 @ 8-03 (88/93)  
 1-11 323D 2X 15730M 4.9% 770F 3.5% 554P 101  
 2-11 365D 2X 18920M 5.0% 951F 3.6% 687P 102  
 4-01 310D 2X 21340M 5.3% 1136F 3.5% 751P 102  
 5-02 365D 2X 24330M 5.3% 1290F 3.6% 866P 101  
 6-05 357D 2X 25240M 5.3% 1330F 3.5% 885P 102  
 7-06 365D 2X 26530M 5.1% 1362F 3.6% 951P 101  
 8-08 365D 2X 25370M 5.3% 1351F 3.6% 924P 102  
 10-00 365D 2X 22710M 5.5% 1245F 3.8% 867P 101  
 2925D 185590M 5.3% 9750F 3.6% 6705P LIFE



**Rozelyn L Man Vianne EX-93**

4-10 365D 2X 24,920M 5.3% 1,313F 4.0% 997P  
 Nominated All-American Five-Year-Old 2022  
 Maternal Sister to Lots 3 - 6



**Rozelyn Gotcha Villamae EX-92**

6-03 365D 2X 22,080M 5.9% 1,298F 3.8% 837P  
 1st Aged Cow NGS-Lynden 2022  
 Maternal Sister to Lots 3 - 6

**LOT 4 5 #1 MAVERICK X VILLA IVF EMBRYOS**

Breeder & Owner: RHG

BEAVER DAM WI

715.773.2851 jcvp@charter.net

**SMITHFIELD CRAIG MAVERICK-ET 840003239855878 6GU127 A2A2**

08/23 USDA GPTA +127M +0.14% +30F +0.02% +8P  
 +1.7DPR +5.5PL +484NM\$ 99NM%ile +494CM\$ 54% Rel  
 2.65SCS 0.00HCR 29% Rel 2.10CCR 30% Rel  
 3.70LIV 28% Rel 0.40GL 40% Rel 2.20EFC 27% Rel  
 AGA 08/23 PTAT +0.6 +1.4UDC +0.5FLC 52%Rel PTI +92

PA: +181M +0.19% +42F +0.06% +16P +486CM\$ +475NM\$  
 +1.0PTAT +1.6UDC +1.3FLC +0.6DPR +4.1PL +109CPI 2.75SCS

- Five (5) #1 IVF embryos
- Sexed semen used for Females
- Resulting calves would rank #2 on August 2023 CPI Heifer List
- Resulting calves will be A2A2 by parentage
- Located at TransOva, WI
- Embryos must be in buyer's possession within 60 days of sale

**ROZELYN AARON VILLA USA000068042242 A2A2**

Appraisal: EX 94 @ 10-05 (EEEEEE) 2E Gold Star Dam - 2016  
 2617D 163750M 5.4% 8778F 3.8% 6190P LIFE

**LOT 5 5 #1 PELOTON X VILLA IVF EMBRYOS**

Breeder & Owner: RHG

BEAVER DAM WI

715.773.2851 jcvp@charter.net

**DAIRYMAN THEO PELOTON 840003240506898 6GU128 A2A2**

08/23 USDA GPTA +197M +0.13% +33F +0.00% +7P  
 +1.8DPR +5.1PL +519NM\$ 99NM%ile +525CM\$ 54% Rel  
 2.76SCS 1.20HCR 30% Rel 2.30CCR 32% Rel  
 2.70LIV 29% Rel 0.40GL 39% Rel 1.40EFC 28% Rel  
 AGA 08/23 PTAT +0.4 +0.8UDC +0.0FLC 51%Rel PTI +77

PA: +216M +0.19% +43F +0.05% +15P +501CM\$ +492NM\$  
 +0.9PTAT +1.3UDC +1.1FLC +0.6DPR +3.9PL +101CPI 2.80SCS

- Five (5) #1 IVF embryos
- Sexed semen used for Females
- Resulting calves would rank in top 10 CPI Heifers - August 2023
- Resulting calves will be A2A2 by parentage
- Located at TransOva, WI
- Embryos must be in buyer's possession within 60 days of sale

**ROZELYN AARON VILLA USA000068042242 A2A2**

Appraisal: EX 94 @ 10-05 (EEEEEE) 2E Gold Star Dam - 2016  
 2617D 163750M 5.4% 8778F 3.8% 6190P LIFE

**LOT 6 5 #1 THEO X VILLA IVF EMBRYOS**

Breeder & Owner: RHG

BEAVER DAM WI

715.773.2851 jcvp@charter.net

**RIPLEY FARMS NETWORK C THEO 840003146571505 6GU112 A2A2**

04/22 USDA GPTA -103M +0.20% +31F +0.04% +4P  
 +1.5DPR +4.6PL +469NM\$ 99NM%ile +480CM\$ 51% Rel  
 2.68SCS -1.0SCR 0.50HCR 29% Rel 1.20CCR 33% Rel  
 2.20LIV 29% Rel 0.00GL 39% Rel 3.10EFC 30% Rel  
 AGA 04/22 PTAT +0.5 +0.6UDC +1.4FLC 48%Rel PTI +78

PA: +50M +0.22% +41F +0.07% +13P +468CM\$ +456NM\$  
 +0.9PTAT +1.2UDC +1.8FLC +0.5DPR +3.6PL +100CPI 2.76SCS

- Five (5) #1 IVF embryos
- Sexed semen used for Females
- Resulting calves would rank in the top 12 CPI Heifers - August 2023
- Resulting calves will be A2A2 by parentage
- Located at TransOva, WI
- Embryos must be in buyer's possession within 60 days of sale

**ROZELYN AARON VILLA USA000068042242 A2A2**

Appraisal: EX 94 @ 10-05 (EEEEEE) 2E Gold Star Dam - 2016  
 2617D 163750M 5.4% 8778F 3.8% 6190P LIFE



**Knapps Spider Bank On Me-ET EX-94**  
 111,140M 5.6% 6,190F 3.7% 4,058P Life  
 Three-Time Reserve All-American  
 Dam of Lot 7



**Knapps-Acc-Drone-Blast-ET VG-88**  
 Full Sister to Lot7

**LOT 7 2 #1 DRONE X BANK ON ME IVF EMBRYOS**

**Breeder & Owner: KNAPP LANDEN**  
**EPWORTH IA**  
**563-590-5754 austinknapp25@gmail.com**

PA: +218M -0.02% +6F -0.01% +5P +12CM\$ +17NM\$  
 +1.4PTAT +1.5UDC +1.4FLC -1.3DPR +1.0PL +35CPI 3.19SCS

**HI GUERN VIEW LEVI DRONE USA000097004646 94GU959 A2A2**

08/23 USDA GPTA +99M -0.08% -10F -0.05% -6P  
 -1.4DPR +0.8PL -126NM\$ 10NM%ile -138CM\$ 90% Rel  
 3.33SCS -1.60HCR 51% Rel -2.20CCR 60% Rel  
 0.20LIV 38% Rel -0.20GL 92% Rel -2.10EFC 47% Rel  
 AGA 08/23 PTAT +1.5 +1.2UDC +2.4FLC 87%Rel PTI +14

**KNAPPS SPIDER BANK ON ME-ET USA000097000091**

08/23 USDA GPTA +336M +0.04% +22F +0.03% +16P  
 -1.1DPR +1.1PL +159NM\$ 73NM%ile +161CM\$ 71% Rel  
 3.04SCS -1.60HCR 34% Rel -1.50CCR 43% Rel  
 -1.20LIV 36% Rel 0.70GL 44% Rel 3.20EFC 37% Rel  
 4 Rec YDev: +709M +51F +35P  
 2 App 08/23 PTAT +1.2 +1.7UDR +0.4FLC 71%Rel CPI +56  
 Appraisal: EX 94 @ 6-01 (EEEEVE)  
 1-11 365D 2X 19560M 5.3% 1040F 3.6% 700P DHIA  
 3-07 365D 2X 27770M 5.4% 1493F 3.4% 958P DHIA  
 5-05 305D 2X 28590M 5.3% 1525F 3.4% 964P 96  
 6-06 250D 2X 16960M 6.5% 1110F 4.0% 675P 94  
 1811D 111140M 5.6% 6190F 3.7% 4058P LIFE

*Reserve All-American Aged Cow 2021*  
*Reserve All-American Four-Year-Old 2019*  
*Reserve All-American Jr. Two-Year-Old 2017*  
*HM Junior All-American & Nom. AA Spring Yearling 2016*  
*Member, AA Best Three Females & Exhibitor's Herd 2017*  
 Dtrs: KNAPPS COPPER BANK ON IT 90 @ 5-04 (91/86)  
 4-08 365D 2X 28160M 5.2% 1474F 3.7% 1030P DHIA  
*Nominated All-American Jr. Two-Year-Old 2019*  
 KNAPPS TG ROBBING THE BANK 85 @ 3-08 (84/84)  
 2-07 365D 2X 24620M 4.6% 1127F 3.4% 834P DHIA  
*Nominated All-American Winter Calf 2019*  
 KNAPPS ACC DRONE BLAST-ET 88 @ 2-07 (88/88)  
*Nominated All-American Spring Yearling 2022*  
*2nd Junior Two-Year-Old NGS-Madison 2023*

- Two (2) #1 IVF embryos
- Reverse sorted semen used for Females
- Embryos can be transported via TransOva
- Embryos must be in buyer's possession within 60 days of sale

**COULEE CREST LUXURY SPIDER-ET USA000000604229 1GU415**

08/23 USDA GPTA +285M +0.08% +27F +0.09% +25P  
 -2.9DPR -3.4PL -60NM\$ 10NM%ile -57CM\$ 97% Rel  
 3.30SCS -0.80HCR 71% Rel -3.10CCR 91% Rel  
 -3.70LIV 76% Rel -0.30GL 98% Rel 7.50EFC 79% Rel  
 AGA 08/23 PTAT +0.4 +0.0UDC -1.3FLC 97%Rel PTI +15

**KNAPPS MR AMERICA MISS BESTANY USA000068026893**

Appraisal: 92 @ 6-07 (92/89)  
 2-02 365D 2X 18700M 5.0% 938F 3.2% 604P DHIA  
 3-10 365D 2X 23410M 5.5% 1297F 3.2% 748P DHIA  
 5-10 365D 2X 24700M 5.8% 1438F 3.3% 817P DHIA  
 2164D 120810M 5.8% 7034F 3.6% 4349P LIFE  
*Junior All-American & Nom. All-American Sr. Two-Year-Old 2011*

**3D: KNAPPS ACE MISS BEST USA000068006305**

Appraisal: 92 @ 5-08 (91/91)  
 6-02 365D 2X 24730M 5.4% 1330F 3.2% 799P DHIA  
 1837D 102260M 5.5% 5650F 3.4% 3430P LIFE  
*Honorable Mention Junior All-American Aged Cow 2011*  
*Nominated Junior All-American Sr. Two-Year-Old 2007*  
 Dtr: KNAPPS REGIS BLESSING 92 @ 5-07 (92/88)  
 5-02 365D 2X 24940M 3.8% 939F 3.2% 800P DHIA  
*Reserve Junior All-American Five-Year-Old 2015*

**4D: KNAPPS MISS BEST USA000003060918**

Appraisal: 93 @ 5-04 (93/93) Gold Star Dam - 2002  
 3-04 365D 2X 28510M 6.4% 1812F\*3.4% 959P DHIA  
 1679D 116150M 6.0% 6954F 3.5% 4025P LIFE  
*Reserve All-American Sr. Three-Year-Old 2001*  
*Honorable Mention All-American Four-Year-Old 2002*



**Amanda!**

Unanimous All-American Four-Year-Old 2022  
 Member, All-American Exhibitor's Herd 2022  
 Grand Champion NGS-Harrisburg 2022  
 Grand Champion Ohio State Fair 2023  
 3rd Five-Year-Old NGS-Madison 2023  
 #20(T) PTAT Cow - August 2023

**Country Lane L Amanda EX-94**

4-03 317D 2X 20,880M 5.2% 1,088F 3.2% 678P  
 Dam of Lot 8

**LOT 8 3 #1 GOLDMINE X AMANDA IVF EMBRYOS**

**Breeder & Owner: SPRINGHILL**

**BIG PRAIRIE OH**

**330.473.9660 springhill.chris@gmail.com**

PA: -142M +0.06% +4F +0.04% +1P -5CM\$ -6NM\$  
 +1.5PTAT +1.9UDC +2.8FLC -0.5DPR +0.4PL +52CPI 3.08SCS

**TERPHILL JAMES DEAN GOLDMINE-ETV 840003214098874 6GU126 A2A2**

08/23 USDA GPTA -204M +0.10% +8F +0.08% +7P  
 -1.3DPR +0.7PL +24NM\$ 35NM%ile +30CM\$ 52% Rel  
 3.09SCS -1.90HCR 28% Rel -2.10CCR 30% Rel  
 0.50LIV 27% Rel -0.90GL 31% Rel -5.70EFC 27% Rel  
 AGA 08/23 PTAT +1.2 +1.7UDC +2.1FLC 50%Rel PTI +50

**COUNTRY LANE L AMANDA USA000097005003 A2A2**

08/23 USDA GPTA -79M +0.02% +0F -0.01% -5P  
 +0.4DPR +0.1PL -36NM\$ 28NM%ile -39CM\$ 65% Rel  
 3.06SCS 0.10HCR 35% Rel 0.40CCR 40% Rel  
 -0.40LIV 36% Rel -0.10GL 41% Rel 2.40EFC 37% Rel  
 2 Rec YDev: +26M +4F -7P  
 3 App 08/23 PTAT +1.7 +2.0UDR +3.4FLC 67%Rel CPI +54  
 Appraisal: EX 94 @ 5-04 (EEEEEE)  
 4-03 317D 2X 20880M 5.2% 1088F 3.2% 678P 96  
 5-03 305D 2X 25971M 4.7% 1214F 3.2% 820P Proj. Act.

- Three (3) #1 IVF embryos
- Reverse sorted semen used for Females
- Resulting calves will be A2A2 by parentage
- Located at TransOva, MD
- Embryos must be in buyer's possession within 60 days of sale

**MARODORE AARONS LEVI-ET USA000068025119 7GU438 A2A2**

08/23 USDA GPTA -188M -0.04% -15F -0.04% -13P  
 +0.4DPR +2.5PL -34NM\$ 20NM%ile -39CM\$ 97% Rel  
 3.05SCS 0.20HCR 70% Rel -0.80CCR 90% Rel  
 0.70LIV 71% Rel -0.60GL 99% Rel 3.60EFC 77% Rel  
 AGA 08/23 PTAT +0.9 +0.5UDC +1.7FLC 97%Rel PTI +3

**HI FIELD GARY TABATHA USA000068028282 A2A2**

Appraisal: VG 87 @ 9-05 (VE++V)  
 Dtrs: HI FIELD CHAMP SHELLY 86 @ 4-08 (87/85)  
 COUNTRY LANE TINA 86 @ 4-06 (86/85)

**3D: HI FIELD APOLLO MAGGIE USA000068002827**

Appraisal: 88 @ 5-07 (88/86)  
 Dtr: HI FIELD LOUIE LOU 90 @ 4-07 (91/86)

**4D: HI FIELD PERFECT ROBIN USA000003061545**

Appraisal: 90 @ 8-05 (90/89)  
 Dtr: HI FIELD JORDAN DOLLY 91 @ 4-08 (92/88)





**Coulee Crest Pilot Lava-ET EX-90 2E**  
 128,290M 5.6% 7,209F 3.7% 4,744P Lifetime  
 #2 CPI Cow August 2023  
 Dam of Lot 9; Granddam of Lot 10



**LOT 9 4 #1 GOLDMINE X LAVA IVF EMBRYOS**

**Breeder & Owner: COULEE CREST LLC  
 CASHTON WI**

**(608) 633-2321 couleecrest@hotmail.com**  
 PA: +399M +0.07% +30F +0.04% +19P +178CM\$ +174NM\$  
 +1.2PTAT +1.8UDC +1.6FLC -1.5DPR +0.4PL +84CPI 3.00SCS

- Four (4) #1 IVF embryos
- Sexed semen used for Females
- Resulting calves will be A2A2 by extended parentage
- Resulting calves would rank in top 65 CPI Heifers, August 2023
- Located at TransOva in Madison, Wisconsin
- Embryos must be in buyer's possession within 60 days of sale

**TERPHILL JAMES DEAN GOLDMINE-ETV 840003214098874 6GU126 A2A2**

08/23 USDA GPTA -204M +0.10% +8F +0.08% +7P  
 -1.3DPR +0.7PL +24NM\$ 35NM%ile +30CM\$ 52% Rel  
 3.09SCS -1.90HCR 28% Rel -2.10CCR 30% Rel  
 0.50LIV 27% Rel -0.90GL 31% Rel -5.70EFC 27% Rel  
 AGA 08/23 PTAT +1.2 +1.7UDC +2.1FLC 50%Rel PTI +50

**LINDRIAN GRUMPY PILOT-ET CAN000011632409 200GU307 A2A2**

08/22 USDA GPTA -433M +0.11% -1F +0.06% -5P  
 +0.4DPR +1.0PL +64NM\$ 29NM%ile +75CM\$ 88% Rel  
 2.70SCS -0.60HCR 47% Rel 0.90CCR 65% Rel  
 1.10LIV 43% Rel 2.60GL 91% Rel 0.60EFC 48% Rel  
 AGA 08/22 PTAT +0.5 +1.5UDC +1.2FLC 83%Rel PTI +28

**COULEE CREST PILOT LAVA-ET USA000097000835**

08/23 USDA GPTA +1001M +0.03% +51F -0.01% +31P  
 -1.7DPR +0.0PL +324NM\$ 94NM%ile +326CM\$ 69% Rel  
 2.91SCS -0.20HCR 31% Rel -1.20CCR 39% Rel  
 0.40LIV 31% Rel 1.10GL 42% Rel 2.30EFC 32% Rel  
 4 Rec YDev: +1843M +135F +77P  
 3 App 08/23 PTAT +1.1 +1.8UDR +1.0FLC 70%Rel CPI +118  
 Appraisal: EX 90 @ 7-08 (EEVEV) 2E  
 2-11 365D 3X 27590M 5.6% 1558F 3.6% 997P DHIA  
 4-01 365D 3X 27730M 5.8% 1618F 3.9% 1071P DHIA  
 5-04 365D 3X 32480M 5.6% 1812F 3.6% 1182P DHIA  
 6-06 365D 3X 33320M 5.4% 1805F 3.6% 1206P DHIA  
 1563D 128290M 5.6% 7209F 3.7% 4744P LIFE

**COULEE CREST LAREDO LALITA-ET USA000068039047 A2A2**

Appraisal: 84 @ 4-06 (82/84) Gold Star Dam - 2020  
 1-09 365D 3X 22370M 5.4% 1216F 3.7% 824P DHIA  
 3-02 365D 3X 29720M 5.6% 1652F 3.7% 1094P DHIA  
 4-05 333D 3X 23610M 5.4% 1275F 3.7% 867P 94  
 5-06 358D 3X 26720M 5.5% 1458F 3.6% 975P 94  
 6-07 365D 3X 30500M 5.9% 1786F 3.8% 1146P DHIA  
 2150D 153860M 5.6% 8602F 3.7% 5756P LIFE

**#2 CPI Cow August 2023**

*Dam of 25 of the top 200 CPI Heifers - Including 3 of the top 10!*  
*Nominated Jr. All-American Senior Three-Year-Old 2019*  
 Son at STGenetics: COULEE CREST LAVAS HURRICANE-ETV GPTI +55  
 Son at Semex: COULEE CREST TSUNAMI-ETV GPTI +44  
 Dtrs: COULEE CREST FF LAVAS LYNN-ETV 82 @ 2-08 (83/81)  
 2-00 305D 3X 17750M 5.5% 972F 3.6% 647P 101  
 COULEE CREST JC PENNEY SIRI-ETV 85 @ 2-04 (85/84)  
 COULEE CREST LONDON SKYLAR-ETV 86 @ 2-06 (87/86)  
 COULEE CREST LONDON STEFFI-ETV 85 @ 2-02 (85/86)  
**#23(T) CPI Cow August 2023**  
 COULEE CREST THEO SUMMER-ETV 88 @ 2-03 (90/88)  
*4th Summer Junior Two-Year-Old NGS-Madison 2023*

**3D: FLAMBEAU MANOR DECISION LORI-ET USA000068012709 A2A2**

Appraisal: 90 @ 8-02 (88/90) Gold Star Dam - 2013  
 3-09 365D 3X 44250M\*5.9% 2600F\*3.0% 1313P\* 94  
 2328D 184340M 5.4% 10017F 3.3% 6002P LIFE

**4D: FLAMBEAU MANOR ENHANCER LANA USA000003043629**

Appraisal: 92 @ 7-11 (90/90) Gold Star Dam - 2001  
 5-10 365D 2X 30271M 5.4% 1645F 3.2% 968P DHIA  
 1980D 130421M 4.9% 6454F 3.3% 4293P LIFE

**5D: FLAMBEAU MANOR VOL LAURA USA000003022186**

Appraisal: 90 @ 4-07  
 4-02 305D 2X 18260M 4.2% 765F 3.7% 680P DHIA

**6D: FLAMBEAU MANOR LESLIE USA000002947026**

Appraisal: 90 @ 3-08 Gold Star Dam - 1992

**7D: FLAMBEAU MANOR LAUREL USA000002861817**

Appraisal: 80 @ 9-04 Gold Star Dam - 1992  
 6-01 357D 2X 21602M 4.5% 974F 3.7% 792P DHIA  
 3193D 167770M 4.6% 7639F 3.7% 6168P LIFE



**Coulee Crest Theo Summer-ETV VG-88 90MS**  
 4th Summer Jr. Two-Year-Old NGS-Madison 2023  
 Maternal Sister to Lot 9; Mat. Sister to Dam of Lot 10

**Flambeau Manor Decision Lori-ET EX-90 GSD**  
 3-09 365D 3X 44,250M\* 5.9% 2,600F\* 3.0% 1,313P\*  
 3rd Dam of Lot 9; 4th Dam of Lot 10

**LOT 10 3 #1 MAVERICK X SECOYA IVF EMBRYOS**

**Breeder & Owner: TAYLOR SHERYL & GLENN**  
**CASSVILLE NY**  
**315-292-4230 twfarm.sheryl@gmail.com**

PA: +504M +0.05% +32F +0.01% +18P +411CM\$ +405NM\$  
 +0.8PTAT +1.5UDC +1.0FLC +0.6DPR +3.7PL +99CPI 2.79SCS

**SMITHFIELD CRAIG MAVERICK-ET 840003239855878 6GU127 A2A2**

08/23 USDA GPTA +127M +0.14% +30F +0.02% +8P  
 +1.7DPR +5.5PL +484NM\$ 99NM%ile +494CM\$ 54% Rel  
 2.65SCS 0.00HCR 29% Rel 2.10CCR 30% Rel  
 3.70LIV 28% Rel 0.40GL 40% Rel 2.20EFC 27% Rel  
 AGA 08/23 PTAT +0.6 +1.4UDC +0.5FLC 52%Rel PTI +92

**COULEE CREST NEWTON SECOYA-ETV 840003257821107 A2A2**

08/23 USDA GPTA +880M -0.04% +33F -0.01% +28P  
 -0.6DPR +1.9PL +325NM\$ 94NM%ile +327CM\$ 52% Rel  
 2.93SCS 0.00HCR 28% Rel -0.40CCR 34% Rel  
 1.30LIV 28% Rel 0.60GL 41% Rel 1.50EFC 29% Rel  
 0 App 08/23 PTAT +1.0 +1.5UDR +1.4FLC 52%Rel CPI +106  
 #4 CPI Heifer - August 2023

- Three (3) #1 IVF embryos
- Sexed semen used for Females
- Resulting calves will be A2A2 by parentage
- Resulting calves would rank in top 14 CPI Heifers, August 2023
- Located at Vytelle, NY
- Embryos must be in buyer's possession within 60 days of sale

**RIPLEY FARMS JAG NEWTON 840003130939306 7GU470 A2A2**

04/23 USDA GPTA +296M +0.01% +15F +0.02% +14P  
 +2.5DPR +4.5PL +360NM\$ 90NM%ile +365CM\$ 81% Rel  
 2.87SCS +1.9SCR 0.50HCR 41% Rel 2.60CCR 54% Rel  
 3.10LIV 38% Rel 0.00GL 92% Rel 0.80EFC 42% Rel  
 AGA 04/23 PTAT +0.2 +0.8UDC +1.0FLC 73%Rel PTI +86

**COULEE CREST PILOT LAVA-ET USA000097000835**

Appraisal: EX 90 @ 7-08 (EEVEV) 2E  
 2-11 365D 3X 27590M 5.6% 1558F 3.6% 997P DHIA  
 4-01 365D 3X 27730M 5.8% 1618F 3.9% 1071P DHIA  
 5-04 365D 3X 32480M 5.6% 1812F 3.6% 1182P DHIA  
 6-06 365D 3X 33320M 5.4% 1805F 3.6% 1206P DHIA  
 1563D 128290M 5.6% 7209F 3.7% 4744P LIFE  
 #2 CPI Cow August 2023

**3D: COULEE CREST LAREDO LALITA-ET USA000068039047 A2A2**

Appraisal: 84 @ 4-06 (82/84) Gold Star Dam - 2020  
 6-07 365D 3X 30500M 5.9% 1786F 3.8% 1146P DHIA  
 2150D 153860M 5.6% 8602F 3.7% 5756P LIFE

**3D: FLAMBEAU MANOR DECISION LORI-ET USA000068012709 A2A2**

Appraisal: 90 @ 8-02 (88/90) Gold Star Dam - 2013  
 3-09 365D 3X 44250M\*5.9% 2600F\*3.0% 1313P\* 94  
 2328D 184340M 5.4% 10017F 3.3% 6002P LIFE

**5D: FLAMBEAU MANOR ENHANCER LANA USA000003043629**

Appraisal: 92 @ 7-11 (90/90) Gold Star Dam - 2001  
 5-10 365D 2X 30271M 5.4% 1645F 3.2% 968P DHIA  
 1980D 130421M 4.9% 6454F 3.3% 4293P LIFE

**6D: FLAMBEAU MANOR VOL LAURA USA000003022186**

Appraisal: 90 @ 4-07  
 4-02 305D 2X 18260M 4.2% 765F 3.7% 680P DHIA

**7D: FLAMBEAU MANOR LESLIE USA000002947026**

Appraisal: 90 @ 3-08 Gold Star Dam - 1992



**Up The Creek J Dean Whiteclaw-ETV**  
 5th Summer Yearling NGS-Madison 2023  
 1st Summer Yearling Minnesota State Fair 2023  
 Maternal Sister to Lot 11



**Up the Creek Aaron Waconia-ET EX-94**  
 124,890M 5.5% 6,850F 3.8% 4,734P Lifetime  
 HM All-American Five-Year-Old 2014  
 Granddam of Lot 11

**LOT 11 3 #1 AUDREY X WHITEWATER IVF EMBRYOS**

**Breeder & Owner: ANDERSON DONNA  
 LESTER PRAIRIE MN**

**320.395.2023 upthecreekguernseys@gmail.com**  
 PA: +112M +0.19% +38F +0.08% +17P +237CM\$ +230NM\$  
 +1.0PTAT +0.9UDC +1.9FLC -1.7DPR +0.9PL +78CPI 3.02SCS

**UP THE CREEK LONDON AUDREY 840003210758207 6GU122 A2A2**

08/23 USDA GPTA +313M +0.04% +21F +0.01% +12P  
 +1.4DPR +3.3PL +326NM\$ 85NM%ile +328CM\$ 56% Rel  
 2.96SCS +1.3SCR -0.10HCR 29% Rel 1.80CCR 36% Rel  
 0.40LIV 30% Rel 0.20GL 43% Rel -4.60EFC 30% Rel  
 AGA 08/23 PTAT +0.7 +0.5UDC +1.5FLC 55%Rel PTI +74

**UP THE CREEK SHAGGYS WHITEWATER-ET USA000097000051 A2A2**

08/23 USDA GPTA -89M +0.34% +55F +0.14% +22P  
 -4.7DPR -1.6PL +134NM\$ 68NM%ile +146CM\$ 65% Rel  
 3.08SCS -1.10HCR 31% Rel -5.40CCR 42% Rel  
 -2.70LIV 32% Rel 0.40GL 41% Rel -0.30EFC 32% Rel  
 3 Rec YDev: +661M +184F +92P  
 5 App 08/23 PTAT +1.2 +1.2UDR +2.2FLC 72%Rel CPI +81  
 Appraisal: EX 93 @ 7-04 (EEEE) 2E  
 2-03 365D 2X 16780M 5.6% 945F 4.0% 665P DHIA  
 3-08 365D 2X 21060M 6.2% 1304F 4.1% 860P DHIA  
 6-09 305D 2X 21160M 6.2% 1311F 3.8% 811P 98  
 #59(T) CPI Cow August 2023

*Dam of Seven of the top 200 CPI Heifers - August 2023*  
*6th Senior Three-Year-Old NGS-Madison 2019*  
 Dtrs: UP THE CREEK J DEAN WINTERROSE-ETV  
*1st Fall Yearling Minnesota State Fair 2023*  
 #7(T) PTAT Heifer & #109(T) CPI Heifer August 2023  
 UP THE CREEK J DEAN WHITECLAW-ETV  
*5th Summer Yearling NGS-Madison 2023*



**Up The Creek Audrey's Whodunit-ETV**  
 6th Fall Calf Midwest Guernsey Show 2023  
 Full Sister to Lot 11

- Three (3) #1 IVF embryos
- Reverse sorted semen used for Females
- Resulting calves will be A2A2 by parentage
- Resulting calves would rank in the top 100 CPI Heifers - August 2023
- Located at Up The Creek Farm, Minnesota
- Embryos must be in buyer's possession within 60 days of sale

**UP THE CREEK SPIDERS SHAGGY-ET USA000068046196 54GU469 A1A2**

08/23 USDA GPTA -630M +0.28% +19F +0.17% +8P  
 -1.3DPR -2.5PL -56NM\$ 15NM%ile -41CM\$ 86% Rel  
 2.98SCS -0.80HCR 47% Rel -1.30CCR 62% Rel  
 -2.30LIV 44% Rel -1.00GL 89% Rel 3.10EFC 48% Rel  
 AGA 08/23 PTAT -0.3 -0.3UDC -2.2FLC 86%Rel PTI -13

**UP THE CREEK AARON WACONIA-ET USA000068025005**

Appraisal: EX 94 @ 10-11 (EEVEE)  
 2-03 331D 2X 14550M 5.2% 763F 3.5% 510P 96  
 3-04 365D 2X 17140M 5.6% 955F 3.8% 651P DHIA  
 4-07 336D 2X 17170M 5.6% 955F 3.5% 609P 98  
 5-08 365D 2X 21050M 6.0% 1258F 3.8% 799P DHIA  
 7-04 365D 3X 20310M 4.7% 958F 3.7% 759P DHIA  
 9-11 365D 2X 17470M 5.1% 896F 3.6% 634P DHIA  
 2732D 124890M 5.5% 6850F 3.8% 4734P LIFE  
*Honorable Mention All-American Five-Year-Old 2014*  
*Nominated All-American Aged Cow 2016*  
 Dtrs: UP THE CREEK GEO WASECA 86 @ 8-09 (87/78)  
 4-10 365D 3X 22260M 5.0% 1118F 3.3% 732P DHIA  
 UP THE CREEK SHAGGYS WACO-ET 90 @ 5-01 (91/84)  
 4-06 365D 2X 16420M 5.5% 900F 4.0% 649P DHIA  
 UP THE CREEK HOPPER WHOPPER-ET 88 @ 5-06 (87/87)  
 3-09 365D 2X 17300M 5.3% 912F 3.8% 662P DHIA  
*4th Yearling in Milk NGS-Madison 2019*  
 UP THE CREEK LATIMER WEST POINT-TW 90 @ 6-05 (90/86)  
*Reserve Senior Champion Minnesota State Fair 2021*

**3D: UP THE CREEK ROYAL OAKS WINKY USA000003043725**

Appraisal: 93 @ 10-00 (93/92)  
 8-08 365D 2X 26020M 5.3% 1386F 3.2% 827P 99  
 3103D 165810M 4.7% 7791F 3.4% 5671P LIFE  
*Honorable Mention All-American Sr. Three-Year-Old 1999*



**Knapps HP MB Trina-ETV EX-91**  
 Reserve All-American 2021 & 2022  
 Dam of Lot 12  
 Maternal Sister to Dam of Lot 13



**Empire JCP Trinidad VG-86**  
 Reserve All-American Summer Yearling 2022  
 3rd Summer Jr. Two-Year-Old NGS-Madison 2023  
 Full Sister to Lot 12

**LOT 12 3 #1 JC PENNEY X TRINA IVF EMBRYOS**

**Breeder & Owner: SCHRUPP TIM & MEGAN**  
**PAYNESVILLE MN**

**320.492.7735 beck0648@umn.edu**

PA: -31M -0.08% -15F +0.01% +0P -56CM\$ -58NM\$  
 +1.4PTAT +1.6UDC +2.6FLC -1.7DPR +1.4PL +19CPI 2.93SCS

**SPRINGHILL JC PENNEY-ET 840003151591406 6GU114 A2A2**

08/23 USDA GPTA -121M +0.06% +5F +0.02% +0P  
 -2.9DPR +0.1PL -62NM\$ 10NM%ile -60CM\$ 72% Rel  
 2.99SCS +0.4SCR -3.30HCR 43% Rel -4.60CCR 42% Rel  
 -0.40LIV 37% Rel 0.80GL 54% Rel -2.30EFC 37% Rel  
 AGA 08/23 PTAT +1.2 +1.5UDC +2.5FLC 64%Rel PTI +28

**KNAPPS HP MB TRINA-ETV 840003150322477 A2A2**

08/23 USDA GPTA +60M -0.21% -34F -0.01% +0P  
 -0.5DPR +2.6PL -53NM\$ 24NM%ile -51CM\$ 69% Rel  
 2.86SCS -2.60HCR 32% Rel -1.80CCR 47% Rel  
 0.60LIV 37% Rel -0.90GL 47% Rel -5.60EFC 38% Rel

1 Rec YDev: -2236M -243F -119P  
 3 App 08/23 PTAT +1.5 +1.6UDR +2.7FLC 70%Rel CPI +9  
 Appraisal: EX 91 @ 4-05 (EEEEVE)

*Reserve All-American Four-Year-Old 2022*

*Reserve All-American Junior Three-Year-Old 2021*

*Grand Champion Midwest Guernsey Show 2022*

Dtrs: EMPIRE DRONE TRINITY 85 @ 2-03 (83/83)

*2nd Junior Two-Year-Old Minnesota State Fair 2022*

EMPIRE JCP TRINIDAD 86 @ 1-10 (85/86)

*Reserve All-American Summer Yearling 2022*

*3rd Summer Junior Two-Year-Old NGS-Madison 2023*

EMPIRE JCP TOBAGO-ET

*2nd Fall Calf Midwest Guernsey Show 2023*

- Three (3) #1 IVF embryos
- Reverse sorted semen used for females
- Embryos located in Paynesville, MN & can be transported via TransOva
- Resulting calves will be A2A2 by parentage
- Embryos must be in buyer's possession within 60 days of sale

**INDIAN ACRES PIES-ET USA000068024088 94GU958 A2A2**

08/23 USDA GPTA +337M -0.10% -3F +0.03% +16P  
 -2.9DPR -1.0PL -69NM\$ 10NM%ile -69CM\$ 92% Rel  
 3.16SCS -3.60HCR 51% Rel -3.30CCR 74% Rel  
 -1.80LIV 56% Rel -1.30GL 91% Rel -8.50EFC 60% Rel  
 AGA 08/23 PTAT +1.0 +0.5UDC +2.6FLC 89%Rel PTI +22

**KNAPPS ACE TAMERA USA000068006299**

Appraisal: 93 @ 9-07 (91/92)  
 2-07 365D 2X 19960M 4.7% 935F 3.4% 670P DHIA  
 3-08 365D 2X 24510M 4.3% 1044F 3.2% 786P DHIA  
 5-06 365D 2X 24830M 4.6% 1146F 3.3% 809P DHIA  
 9-07 365D 2X 32350M 4.2% 1351F 3.2% 1036P DHIA  
 3038D 178720M 4.4% 7847F 3.4% 6004P LIFE  
 25 Excellent Daughters & Counting!

**3D: SUNRISE LUXURY TAMI USA000003068188**

Appraisal: 93 @ 5-04 (92/92)  
 3-10 365D 2X 28480M 4.2% 1198F 3.2% 907P DHIA  
 2395D 151070M 4.0% 6087F 3.2% 4888P LIFE



**Empire Drone Trinity VG-85**  
 2nd Jr. Two-Year-Old MN State Fair 2022  
 Maternal Sister to Lot 12



**Thurston Farms Primetime Trixie EX-92**  
 2-09 305D 3X 21,122M 4.0% 835F 3.3% 700P  
 Unanimous All-American Yearling in Milk 2019  
 Maternal Sister to Lot 13



**Knapps Regis Tambourine-ET EX-95**  
 6-10 365D 40,160M\* 5.1% 2,055F\* 3.3% 1,338P\*  
 Unanimous All-American Aged Cow 2015  
 Full Sister to Dam of Lot 13

**LOT 13 4 #1 MISSILE OR JC PENNEY X TROTTER IVF EMBRYOS**

Breeder & Owner: TAYLOR GLENN A & SHERYL  
 CASSVILLE NY  
 315-292-4230 twfarm.sheryl@gmail.com

**Sire Choice 1:**

**VALLEY GEM MISSILE-ETV 840003208696258 200GU125 A2A2**

08/23 USDA GPTA -1015M +0.20% -13F +0.08% -20P  
 +0.1DPR +0.0PL -182NM\$ 10NM%ile -179CM\$ 56% Rel  
 3.12SCS -2.20HCR 31% Rel -0.70CCR 40% Rel  
 2.20LIV 35% Rel -0.40GL 40% Rel -4.20EFC 36% Rel  
 AGA 08/23 PTAT +1.2 +1.9UDC +1.9FLC 56%Rel PTI +4

**Missile mating parent averages:**

PA: +46M -0.03% -5F -0.03% -4P -17CM\$ -14NM\$  
 +0.9PTAT +1.3UDC +0.6FLC -0.1DPR +1.1PL +11CPI 3.03SCS

**Sire Choice 2:**

**SPRINGHILL JC PENNEY-ET 840003151591406 6GU114 A2A2**

08/23 USDA GPTA +162M +0.06% +5F +0.02% +0P  
 -2.9DPR +0.1PL -62NM\$ 10NM%ile -60CM\$ 72% Rel  
 2.99SCS +0.4SCR -3.30HCR 43% Rel -4.60CCR 42% Rel  
 -0.40LIV 37% Rel 0.80GL 54% Rel -2.30EFC 37% Rel  
 AGA 08/23 PTAT +1.2 +1.5UDC +2.5FLC 64%Rel PTI +28

**JC Penney mating parent averages:**

PA: +634M -0.10% +5F -0.06% +7P +43CM\$ +47NM\$  
 +0.9PTAT +1.1UDC +0.9FLC -1.6DPR +1.1PL +24CPI 2.96SCS

**KNAPPS REGIS TROTTER-ETV USA000097000111 A2A2**

08/23 USDA GPTA +1106M -0.25% +4F -0.13% +13P  
 -0.2DPR +2.1PL +155NM\$ 73NM%ile +145CM\$ 67% Rel  
 2.93SCS -0.50HCR 30% Rel -1.00CCR 39% Rel  
 -1.00LIV 35% Rel 0.60GL 37% Rel 1.60EFC 34% Rel  
 4 Rec YDev: +2535M +17F +29P  
 3 App 08/23 PTAT +0.5 +0.6UDR -0.7FLC 63%Rel CPI +20  
 Appraisal: VG 88 @ 7-09 (VE+VV)  
 4-10 365D 3X 28670M 3.9% 1129F 3.1% 875P DHIA  
 6-01 365D 3X 32500M 3.9% 1271F 2.9% 958P DHIA  
 Dtrs: THURSTON FARMS PRIMETIME TRIXIE 92 @ 3-07 (91/94)  
 2-09 305D 3X 21122M 4.0% 835F 3.3% 700P DHIA  
 Unanimous All-American Yearling in Milk 2019

HERITAGE BRK NOVAK TREASURE-ET 87 @ 4-05 (87/88)  
 3-07 365D 3X 27410M 4.2% 1153F 3.0% 818P DHIA

- Four (4) #1 IVF embryos
- Buyer's choice of sire - can be a combination of both or just one
- Reverse sorted semen used for females
- Embryos located at Vytelle, NY
- Resulting calves will be A2A2 by parentage
- Embryos must be in buyer's possession within 60 days of sale

**MARODORE ENHANCER REGIS-ET USA000000603223 14GU280**

08/23 USDA GPTA +687M -0.12% +10F -0.10% +5P  
 -2.3DPR -3.6PL -184NM\$ 10NM%ile -195CM\$ 97% Rel  
 3.09SCS -0.30HCR 63% Rel -2.90CCR 91% Rel  
 -5.50LIV 79% Rel 1.30GL 96% Rel -0.70EFC 80% Rel  
 AGA 08/23 PTAT -0.1 -0.3UDC -2.4FLC 98%Rel PTI -41

**KNAPPS ACE TAMERA USA000068006299**

Appraisal: 93 @ 9-07 (91/92)  
 2-07 365D 2X 19960M 4.7% 935F 3.4% 670P DHIA  
 3-08 365D 2X 24510M 4.3% 1044F 3.2% 786P DHIA  
 5-06 365D 2X 24830M 4.6% 1146F 3.3% 809P DHIA  
 9-07 365D 2X 32350M 4.2% 1351F 3.2% 1036P DHIA  
 3038D 178720M 4.4% 7847F 3.4% 6004P LIFE  
 25 Excellent Daughters & Counting!

**3D: SUNRISE LUXURY TAMI USA000003068188**

Appraisal: 93 @ 5-04 (92/92)  
 3-10 365D 2X 28480M 4.2% 1198F 3.2% 907P DHIA  
 2395D 151070M 4.0% 6087F 3.2% 4888P LIFE



**Heritage Brook AP Tinsel-ETV VG-87**

Nominated Jr. All-American 2021 & 2022  
 Res. Intermediate Champion NE Classic 2023  
 Dam of Lot 14; Maternal Family of Lots 12 - 18

**LOT 14 5 #1 JAMES DEAN X TINSEL IVF EMBRYOS**

Breeder & Owner: JOHNSON ZACHARY & HURST HANNAH  
 TUNBRIDGE VT

614.208.3529 guernsey95@yahoo.com

PA: +2M -0.10% -18F -0.06% -11P -61CM\$ -57NM\$  
 +0.5PTAT +1.1UDC +0.9FLC -0.6DPR +1.5PL -15CPI 2.90SCS

**SPRINGHILL JAMES DEAN-ETV 840003151591428 551GU911 A2A2**

08/23 USDA GPTA -371M +0.15% +9F +0.08% +2P  
 -1.3DPR +2.0PL +105NM\$ 40NM%ile +116CM\$ 58% Rel  
 2.82SCS -1.60HCR 33% Rel -2.30CCR 34% Rel  
 1.50LIV 29% Rel 0.00GL 42% Rel -3.80EFC 30% Rel  
 AGA 08/23 PTAT +1.1 +1.8UDC +2.0FLC 57%Rel PTI +50

**HERITAGE BROOK AP TINSEL-ETV 840003149897921 A2A2**

08/23 USDA GPTA +520M -0.19% -11F -0.12% -4P  
 -2.4DPR +0.6PL -78NM\$ 20NM%ile -86CM\$ 63% Rel  
 2.89SCS-2.40HCR 34% Rel -4.30CCR 39% Rel  
 -1.40LIV 35% Rel 1.60GL 41% Rel -2.50EFC 36% Rel  
 1 Rec YDev: +2142M -51F +39P  
 1 App 08/23 PTAT +0.6 +0.6UDR +1.6FLC 65%Rel CPI -14  
 Appraisal: VG 87 @ 2-05 (EEVV+)

Nominated Junior All-American Winter Calf 2021  
 Nominated Junior All-American Winter Yearling 2022  
 Reserve Intermediate Champion New England Classic 2023  
 Reserve Grand Champion New England Classic Jr. Show 2023  
 Reserve Intermediate Champion Northeast Spring Show 2023  
 Reserve Grand Champion Northeast Spring Jr. Show 2023  
 Junior Champion New England Classic 2022  
 Junior Champion Northeast Spring Jr. Show 2021  
 Dtr: ELMHURST HOWACRES REP TAWNIA  
 Reserve Junior Champion New England Classic 2023



- Five (5) #1 IVF embryos
- Sexed semen used for females
- Embryos located at Vytelle, NY
- Resulting calves will be A2A2 by parentage
- Embryos must be in buyer's possession within 60 days of sale

**INDIAN ACRES AMERICAN PIE USA000068016348 31GU618 A2A2**

08/23 USDA GPTA +54M -0.17% -28F -0.03% -4P  
 -2.1DPR +3.1PL -59NM\$ 10NM%ile -57CM\$ 98% Rel  
 2.74SCS -3.80HCR 70% Rel -3.20CCR 90% Rel  
 0.10LIV 74% Rel 0.80GL 97% Rel -7.00EFC 79% Rel  
 AGA 08/23 PTAT +0.1 +0.3UDC +2.0FLC 98%Rel PTI -16

**THURSTON FARMS PRIMETIME TRIXIE 840003126794988 A2A2**

Appraisal: EX 92 @ 3-07 (EEEEEE)  
 1-10 276D 3X 13584M 5.2% 707F 3.3% 443P 103  
 2-09 305D 3X 21122M 4.0% 835F 3.3% 700P DHIA  
 HM All-American & HM Jr. All-American Sr. Two-Year-Old 2020  
 HM All-American & HM Jr. All-American Sr. Three-Year-Old 2021  
 Reserve Intermediate Champion NGS-Madison 2019  
 Intermediate & Grand Champion NJS-Madison 2019  
 Dtrs: HERITAGE BROOK LB TRILLIUM-ET 89 @ 2-07 (90/90)  
 2-00 327D 2X 18130M 4.7% 849F 3.6% 654P 97  
 Unanimous All-American Junior Two-Year-Old 2022  
 All-American Spring Calf 2020  
 HERITAGE BROOK LAT TRINITY-ETV 89 @ 2-09 (87/88)  
 Nominated Junior All-American Fall Yearling 2022  
 HERITAGE BROOK DRONE TRINKET-ETV  
 All-American & Jr. All-American Spring Calf 2021

**3D: KNAPPS REGIS TROTTER-ETV USA000097000111 A2A2**

Appraisal: VG 88 @ 7-09 (VE+VV)  
 6-01 365D 3X 32500M 3.9% 1271F 2.9% 958P DHIA

**Elmhurst Howacres Rep Tawyna**

Reserve Junior Champion NE Classic 2023  
 2nd Spring Calf Guernsey Gold Showcase 2023  
 Maternal Sister to Lot 14



**Heritage Brook Lb Triscuit-ET**

Reserve Jr. Champion NE Fall Jr. Show 2020  
 Dam of Lot 15  
 Maternal Sister to Dam of Lot 14



**Heritage Brook Lb Trillium-ET VG-89**

Unanimous All-American Jr. Two-Year-Old 2022  
 Full Sister to Dam of Lot 15  
 Maternal Sister to Dam of Lot 14

**LOT 15 4 #1 MISSILE X TRISCUIT IVF EMBRYOS**

Breeder & Owner: LIVINGSTON KATIE T  
 WEST WINFIELD NY  
 315-292-4230 twfarm.sheryl@gmail.com

PA: -390M +0.09% -3F -0.01% -15P -133CM\$ -129NM\$  
 +1.0PTAT +1.6UDC +2.2FLC -1.3DPR +0.1PL +10CPI 3.09SCS

**VALLEY GEM MISSILE-ETV 840003208696258 200GU125 A2A2**

08/23 USDA GPTA -1015M +0.20% -13F +0.08% -20P  
 +0.1DPR +0.0PL -182NM\$ 10NM%ile -179CM\$ 56% Rel  
 3.12SCS -2.20HCR 31% Rel -0.70CCR 40% Rel  
 2.20LIV 35% Rel -0.40GL 40% Rel -4.20EFC 36% Rel  
 AGA 08/23 PTAT +1.2 +1.9UDC +1.9FLC 56%Rel PTI +4

**HERITAGE BROOK LB TRISCUIT-ET 840003149897905**

08/23 USDA GPTA +235M -0.02% +8F -0.09% -9P  
 -2.7DPR +0.1PL -76NM\$ 21NM%ile -86CM\$ 55% Rel  
 3.06SCS-2.00HCR 33% Rel -5.20CCR 38% Rel  
 -1.30LIV 29% Rel 2.30GL 41% Rel 1.10EFC 33% Rel  
 0 App 08/23 PTAT +0.8 +1.2UDR +2.5FLC 54%Rel CPI +15  
 Reserve Junior Champion Northeast Fall Jr. Show 2020

- Four (4) #1 IVF embryos
- Reverse sorted semen used for females
- Embryos located at Vytelle, NY
- Resulting calves will be A2A2 by extended parentage
- Embryos must be in buyer's possession within 60 days of sale

**COULEE CREST NOVAK LAMBEAU-ET 840003128910115 7GU473 A2A2**

08/23 USDA GPTA +687M -0.12% +10F -0.10% +5P  
 -2.3DPR -3.6PL -184NM\$ 10NM%ile -195CM\$ 97% Rel  
 3.09SCS -0.30HCR 63% Rel -2.90CCR 91% Rel  
 -5.50LIV 79% Rel 1.30GL 96% Rel -0.70EFC 80% Rel  
 AGA 08/23 PTAT -0.1 -0.3UDC -2.4FLC 98%Rel PTI -41

**THURSTON FARMS PRIMETIME TRIXIE 840003126794988 A2A2**

Appraisal: EX 92 @ 3-07 (EEEEEE)  
 1-10 276D 3X 13584M 5.2% 707F 3.3% 443P 103  
 2-09 305D 3X 21122M 4.0% 835F 3.3% 700P DHIA  
 HM All-American & HM Jr. All-American Sr. Two-Year-Old 2020  
 HM All-American & HM Jr. All-American Sr. Three-Year-Old 2021  
 Reserve Intermediate Champion NGS-Madison 2019  
 Intermediate & Grand Champion NJS-Madison 2019  
 Dtrs: HERITAGE BROOK LB TRILLIUM-ET 89 @ 2-07 (90/90)  
 2-00 327D 2X 18130M 4.7% 849F 3.6% 654P 97  
 Unanimous All-American Junior Two-Year-Old 2022  
 All-American Spring Calf 2020  
 HERITAGE BROOK LAT TRINITY-ETV 89 @ 2-09 (87/88)  
 Nominated Junior All-American Fall Yearling 2022  
 HERITAGE BROOK DRONE TRINKET-ETV  
 All-American & Jr. All-American Spring Calf 2021



**Heritage Brook Lat Trinity-ETV VG-89**

Nominated Jr. All-American Fall Yearling 2022  
 Intermediate Champion NY Spring Show 2023  
 Maternal Sister to Dams of Lots 14 & 15



**Knapps AP Two Dozen Roses-ETV EX-90**  
 1-10 365D 2X 20,770M 5.1% 1,051F 3.7% 763P  
 Reserve All-American Jr. Three-Year-Old 2022  
 Dam of Lot 16; Maternal Family of Lots 12 - 18

**Knapps AP Thirsty-ETV EX-90**  
 2-10 321D 2X 26,780M 4.0% 1,081F 3.2% 848P  
 All-American Yearling in Milk 221  
 Full Sister to Dam of Lot 16

**LOT 16 CADET AND/OR TORPEDO X TWO DOZEN ROSES IVF EMBRYOS**

**Breeder & Owner: KNAPP AUSTIN & LANDEN**  
**EPWORTH IA**  
**563-590-5754 austinknapp25@gmail.com**

**HARTDALE JCP CADET 840003237975540 6GU133 A2A2**

08/23 USDA GPTA +473M -0.10% +4F -0.04% +9P  
 -0.1DPR +0.4PL +49NM\$ 40NM%ile +46CM\$ 54% Rel  
 2.98SCS -1.40HCR 28% Rel -0.80CCR 30% Rel  
 1.00LIV 28% Rel 0.60GL 31% Rel -3.20EFC 28% Rel  
 AGA 08/23 PTAT +1.0 +1.4UDC +1.9FLC 50%Rel PTI +52

**Cadet Mating:**

PA: +176M -0.09% -8F -0.02% +4P -4CM\$ -5NM\$  
 +1.0PTAT +1.2UDC +2.1FLC -0.8DPR +1.3PL +27PTI 2.87SCS

**LANG HAVEN LONDON TORPEDO 840003233414503 54GU520 A2A2**

08/23 USDA GPTA +222M +0.02% +13F +0.04% +14P  
 -0.2DPR -0.2PL +71NM\$ 40NM%ile +75CM\$ 58% Rel  
 3.01SCS -0.10HCR 29% Rel -0.40CCR 35% Rel  
 -0.60LIV 29% Rel 1.60GL 43% Rel -1.70EFC 29% Rel  
 AGA 08/23 PTAT +1.8 +2.1UDC +4.2FLC 58%Rel PTI +95

**Torpedo Mating:**

PA: +50M -0.03% -4F +0.03% +6P +11CM\$ +6NM\$  
 +1.4PTAT +1.6UDC +3.2FLC -0.9DPR +1.0PL +49PTI 2.89SCS

**KNAPPS AP TWO DOZEN ROSES-ETV USA000097009439 A2A2**

08/23 USDA GPTA -122M -0.08% -20F +0.01% -2P  
 -1.5DPR +2.2PL -59NM\$ 23NM%ile -53CM\$ 72% Rel  
 2.76SCS-3.10HCR 36% Rel -2.90CCR 50% Rel  
 -0.70LIV 39% Rel 1.10GL 49% Rel -5.20EFC 40% Rel  
 2 Rec YDev: -464M -48F +1P  
 3 App 08/23 PTAT +1.0 +1.0UDR +2.2FLC 74%Rel CPI +2  
 Appraisal: EX 90 @ 3-10 (EEVEV)  
 1-10 365D 2X 20770M 5.1% 1051F 3.7% 763P DHIA  
 3-02 365D 2X 20040M 5.1% 1026F 3.8% 755P DHIA  
 Reserve All-American Junior Three-Year-Old 2022  
 Member, All-American Produce of Dam 2022  
 Member, Reserve All-American Best Three Females 2022  
 Dtr: KNAPPS DRONE TABBY 88 @ 2-05 (89/88)

- Buyer's choice of two (2) to five (5) total #1 IVF embryos
- Two (2) embryos available by Cadet; Three (3) by Torpedo
- Reverse sorted semen used for females
- Resulting calves will be A2A2 by parentage
- Embryos can be transported via TransOva
- Embryos must be in buyer's possession within 60 days of sale

**INDIAN ACRES AMERICAN PIE USA000068016348 31GU618 A2A2**

08/23 USDA GPTA +54M -0.17% -28F -0.03% -4P  
 -2.1DPR +3.1PL -59NM\$ 10NM%ile -57CM\$ 98% Rel  
 2.74SCS -3.80HCR 70% Rel -3.20CCR 90% Rel  
 0.10LIV 74% Rel 0.80GL 97% Rel -7.00EFC 79% Rel  
 AGA 08/23 PTAT +0.1 +0.3UDC +2.0FLC 98%Rel PTI -16

**KNAPPS REGIS TAMBOURINE-ET USA000068023077**

Appraisal: 95 @ 7-04 (95/94)  
 2-02 359D 2X 20840M 4.4% 914F 3.1% 643P 97  
 3-03 365D 2X 23960M 4.6% 1105F 3.2% 770P DHIA  
 4-05 365D 2X 30700M 5.0% 1537F 3.1% 943P DHIA  
 6-10 365D 2X 40160M\*5.1% 2055F\*3.3% 1338P\* DHIA  
 2475D 190040M 7.5%14236F 5.0% 9483P LIFE  
 Unan. All-American & Unan. Jr. All-American Aged Cow 2015  
 Unanimous Jr. All-American & Res. All-American Five-Year-Old 2013  
 All-American & Jr. All-American Jr. Two-Year-Old 2010  
 All-American & Jr. All-American Jr. Three-Year-Old 2011  
 Junior All-American & Reserve All-American Aged Cow 2016  
 Nominated All-American Total Performance Cow 2015  
 Grand Champion NJS-Madison 2011, 2015 & 2016  
 13 Excellent daughters to date





**Knapps Ladysman Tigger-ETV EX-91**

Nominated All-American Spring Calf 2018  
 Member, Res. All-American Jr. Best 3 Females 2018  
 Full Sister to Dam of Lot 17



**Knapps Regis Tambourine-ET EX-95**

6-10 365D 40,160M\* 5.1% 2,055F\* 3.3% 1,338P\*  
 Unanimous All-American Aged Cow 2015  
 Granddam of Lots 16 & 17; 3rd Dam of Lot 18

**LOT 17 3 #1 COIN COLLECTOR X TAMIKO IVF EMBRYOS**

**Breeder & Owner: KNAPP AUSTIN & LANDEN  
 EPWORTH IA**

**563-590-5754 austinknapp25@gmail.com**

PA: -70M +0.01% -2F -0.02% -6P +123CM\$ +124NM\$  
 +0.7PTAT +1.3UDC +0.5FLC +0.3DPR +3.5PL +21CPI 2.97SCS

- Three (3) #1 IVF embryos
- Sexed semen used for females
- Embryos can be transported via TransOva
- Embryos must be in buyer's possession within 60 days of sale

**DAIRYMAN COIN COLLECTOR 840003219111145 551GU916 A2A2**

08/23 USDA GPTA -190M +0.21% +27F +0.01% -4P  
 +1.5DPR +6.3PL +449NM\$ 95NM%ile +454CM\$ 56% Rel  
 2.83SCS 1.60HCR 31% Rel 1.70CCR 34% Rel  
 3.20LIV 29% Rel -0.40GL 44% Rel 6.20EFC 30% Rel  
 AGA 08/23 PTAT +0.7 +1.7UDC +0.6FLC 55%Rel PTI +76

**KNAPPS LADYSMAN TAMIKO-ETV USA000097005951**

08/23 USDA PTA +51M -0.19% -31F -0.05% -7P  
 -0.9DPR +0.6PL -202NM\$ 4NM%ile -209CM\$ 54% Rel  
 3.10SCS-1.60HCR 23% Rel -2.80CCR 35% Rel  
 -0.80LIV 26% Rel -0.30GL 40% Rel -3.50EFC 28% Rel  
 2 Rec YDev: -535M -121F -36P  
 1 App 08/23 PTAT +0.7 +0.8UDR +0.3FLC 55%Rel CPI -34  
 Appraisal: EX 90 @ 4-05 (EVE+E)  
 2-03 365D 2X 16570M 4.3% 716F 3.3% 539P DHIA  
 3-10 365D 2X 22300M 4.0% 895F 3.2% 719P DHIA

**FLAMBEAU MANOR LADYS MAN USA000078006572 7GU468 A2A2**

08/23 USDA GPTA -215M -0.06% -21F -0.03% -13P  
 -0.2DPR +0.1PL -235NM\$ 10NM%ile -245CM\$ 96% Rel  
 3.33SCS -1.70HCR 57% Rel -2.70CCR 81% Rel  
 0.10LIV 55% Rel -1.80GL 98% Rel -3.80EFC 65% Rel  
 AGA 08/23 PTAT +0.1 -0.1UDC -0.2FLC 95%Rel PTI -38

**KNAPPS REGIS TAMBOURINE-ET USA000068023077**

Appraisal: 95 @ 7-04 (95/94)  
 2-02 359D 2X 20840M 4.4% 914F 3.1% 643P 97  
 3-03 365D 2X 23960M 4.6% 1105F 3.2% 770P DHIA  
 4-05 365D 2X 30700M 5.0% 1537F 3.1% 943P DHIA  
 6-10 365D 2X 40160M\*5.1% 2055F\*3.3% 1338P\* DHIA  
 2475D 190040M 7.5%14236F 5.0% 9483P LIFE  
 Unan. All-American & Unan. Jr. All-American Aged Cow 2015  
 Unanimous Jr. All-American & Res. All-American Five-Year-Old 2013  
 All-American & Jr. All-American Jr. Two-Year-Old 2010  
 All-American & Jr. All-American Jr. Three-Year-Old 2011  
 Junior All-American & Reserve All-American Aged Cow 2016  
 Nominated All-American Total Performance Cow 2015  
 Grand Champion NJS-Madison 2011, 2015 & 2016  
 13 Excellent daughters to date



**Knapps HP Pie Tracy-ETV EX-90 2E**  
 5-05 365D 2X 20,850M 4.9% 1,026F 3.4% 705P  
 Dam of Lot 18



**Knapps-Drone-Talk About Me VG-87**  
 Maternal Sister to Lot 18

**LOT 18 4 #1 TORPEDO X TRACY IVF EMBRYOS**

**Breeder: KNAPP LANDEN**  
**EPWORTH IA**  
**Owner: VANHAITSMA TIM & TAMMY**  
**DORR MI**  
**616-292-8515**

- Three (3) #1 IVF embryos
- Reverse sorted semen used for females
- Embryos located at TransOva, WI
- Embryos must be in buyer's possession within 60 days of sale

PA: -67M -0.03% -8F +0.01% -1P -45CM\$ -47NM\$  
 +1.2PTAT +1.6UDC +2.9FLC -0.8DPR +1.0PL +37CPI 2.94SCS

**LANG HAVEN LONDON TORPEDO 840003233414503 54GU520 A2A2**

08/23 USDA GPTA +222M +0.02% +13F +0.04% +14P  
 -0.2DPR -0.2PL +71NM\$ 40NM%ile +75CM\$ 58% Rel  
 3.01SCS -0.10HCR 29% Rel -0.40CCR 35% Rel  
 -0.60LIV 29% Rel 1.60GL 43% Rel -1.70EFC 29% Rel  
 AGA 08/23 PTAT +1.8 +2.1UDC +4.2FLC 58%Rel PTI +95

**KNAPPS HP PIE TRACY-ETV 840003135940025**

08/23 USDA PTA -355M -0.07% -28F -0.02% -15P  
 -1.3DPR +2.2PL -165NM\$ 8NM%ile -164CM\$ 54% Rel  
 2.86SCS-3.10HCR 23% Rel -2.70CCR 32% Rel  
 0.10LIV 26% Rel 0.60GL 36% Rel -7.10EFC 27% Rel  
 4 Rec YDev: -1056M -63F -40P  
 1 App 08/23 PTAT +0.5 +1.0UDR +1.6FLC 50%Rel CPI -21  
 Appraisal: EX 90 @ 6-00 (VEVEE) 2E  
 2-03 352D 2X 16090M 5.0% 810F 3.4% 547P 94  
 3-03 358D 2X 18590M 4.9% 903F 3.4% 631P 95  
 4-05 327D 2X 17450M 5.7% 997F 3.5% 605P 97  
 5-05 365D 2X 20850M 4.9% 1026F 3.4% 705P DHIA  
 Dtrs: KNAPPS DRONE TINA 85 @ 2-08 (83/85)  
 1st Summer Yearling Iowa State Fair 2021  
 KNAPPS DRONE TALK ABOUT ME 87 @ 2-01 (86/83)  
 5th Yearling in Milk NGS-Madison 2023

**INDIAN ACRES AMERICAN PIE USA000068016348 31GU618 A2A2**

08/23 USDA GPTA +54M -0.17% -28F -0.03% -4P  
 -2.1DPR +3.1PL -59NM\$ 10NM%ile -57CM\$ 98% Rel  
 2.74SCS -3.80HCR 70% Rel -3.20CCR 90% Rel  
 0.10LIV 74% Rel 0.80GL 97% Rel -7.00EFC 79% Rel  
 AGA 08/23 PTAT +0.1 +0.3UDC +2.0FLC 98%Rel PTI -16

**KNAPPS MENTOR TAMBORET USA000068045549**

Appraisal: 94 @ 6-06 (94/95)  
 2-01 318D 2X 16600M 4.7% 783F 3.0% 501P 95  
 3-01 363D 2X 22580M 4.7% 1053F 3.0% 685P 96  
 4-01 365D 2X 21810M 5.1% 1117F 3.4% 748P DHIA  
 6-02 305D 2X 23890M 5.0% 1190F 3.5% 832P 96  
 Junior All-American Aged Cow 2017

**3D: KNAPPS REGIS TAMBOURINE-ET USA000068023077**

Appraisal: 95 @ 7-04 (95/94)  
 6-10 365D 2X 40160M\*5.1% 2055F\*3.3% 1338P\* DHIA  
 2475D 190040M 7.5%14236F 5.0% 9483P LIFE  
 Unan. All-American & Unan. Jr. All-American Aged Cow 2015  
 Unanimous Jr. All-American & Res. All-American Five-Year-Old 2013  
 All-American & Jr. All-American Jr. Two-Year-Old 2010  
 All-American & Jr. All-American Jr. Three-Year-Old 2011  
 Junior All-American & Reserve All-American Aged Cow 2016  
 Nominated All-American Total Performance Cow 2015  
 Grand Champion NJS-Madison 2011, 2015 & 2016  
 13 Excellent daughters to date

**4D: KNAPPS ACE TAMERA USA000068006299**

Appraisal: 93 @ 9-07 (91/92)  
 9-07 365D 2X 32350M 4.2% 1351F 3.2% 1036P DHIA  
 3038D 178720M 4.4% 7847F 3.4% 6004P LIFE



**Prairie Moon T Gun Louroses EX-91**  
Reserve All-American Yearling in Milk 2019  
Dam of Lot 19



**Prairie-Moon-Java Lavender-ETV**  
Maternal Sister to Lot 19

**LOT 19 3 #1 JAMES DEAN OR YOGIBEAR X LOUROSES IVF EMBRYOS**

Breeder & Owner: SIVESIND LARS D  
WAUKON IA  
563.794.0275 larssivesind12@gmail.com

- Three (3) #1 IVF embryos
- Buyer's choice of sire - can be a combination of both or just one
- Sexed/Reverse sorted semen used for females
- Embryos located in Waukon, IA - shipping can be arranged via TransOva
- Embryos must be in buyer's possession within 60 days of sale

**Sire Choice 1:**

**SPRINGHILL JAMES DEAN-ETV 840003151591428 551GU911 A2A2**

08/23 USDA GPTA -371M +0.15% +9F +0.08% +2P  
-1.3DPR +2.0PL +105NM\$ 40NM%ile +116CM\$ 58% Rel  
2.82SCS -1.60HCR 33% Rel -2.30CCR 34% Rel  
1.50LIV 29% Rel 0.00GL 42% Rel -3.80EFC 30% Rel  
AGA 08/23 PTAT +1.1 +1.8UDC +2.0FLC 57%Rel PTI +50

**James Dean mating:**

PA: -10M -0.02% -4F +0.02% +2P +28CM\$ +24NM\$  
+1.1PTAT +1.7UDC +2.2FLC -1.3DPR +1.7PL +37CPI 2.85SCS

**Sire Choice 2:**

**EDGEWATER MEADOWS YOGIBEAR-ET USA000000604917 7GU402 A2A2**

08/23 USDA GPTA -498M +0.13% +0F +0.04% -10P  
+0.2DPR +1.2PL -36NM\$ 20NM%ile -32CM\$ 99% Rel  
2.95SCS -1.20HCR 78% Rel -0.20CCR 95% Rel  
0.10LIV 86% Rel -1.10GL 99% Rel -1.00EFC 87% Rel  
AGA 08/23 PTAT +1.2 +1.4UDC +1.1FLC 99%Rel PTI +19

**Yogibear mating:**

PA: -74M -0.03% -9F -0.01% -4P -47CM\$ -47NM\$  
+1.1PTAT +1.5UDC +1.7FLC -0.5DPR +1.3PL +22CPI 2.92SCS

**PRAIRIE MOON T GUN LOUROSES USA000097006301 A1A2**

08/23 USDA GPTA +351M -0.19% -17F -0.05% +2P  
-1.2DPR +1.3PL -58NM\$ 24NM%ile -61CM\$ 46% Rel  
2.88SCS-1.30HCR 26% Rel -1.30CCR 29% Rel  
0.10LIV 26% Rel 0.00GL 28% Rel -3.20EFC 27% Rel  
3 App 08/23 PTAT +1.0 +1.5UDR +2.3FLC 61%Rel CPI +24  
Appraisal: EX 91 @ 5-06 (EEEEEE)

Reserve All-American Yearling in Milk 2019  
Nominated All-American Senior Two-Year-Old 2020  
Reserve Junior Champion Iowa State Fair 2018  
Dtr: PRAIRIE MOON JAVA LAVENDER-ETV  
Supreme Junior Champion Iowa State Fair 2023  
2nd Fall Calf NGS-Madison 2023

**KNAPPS AP TOP GUN-ET USA000097001280 54GU492**

08/23 USDA PTA +570M -0.28% -24F -0.07% +6P  
-2.4DPR +1.9PL -54NM\$ 15NM%ile -56CM\$ 67% Rel  
2.79SCS -2.60HCR 26% Rel -3.90CCR 38% Rel  
-0.80LIV 30% Rel 0.80GL 44% Rel -5.10EFC 32% Rel  
AGA 08/23 PTAT +0.7 +0.7UDC +0.7FLC 60%Rel PTI -12

**PRAIRIE MOON M LOUMILA USA000097006300**



**Sniders Garrett Ashanti-ET EX-94 2E**  
 170,730M 5.2% 8,901F 3.8% 6,434P Lifetime  
 All-American Aged Cow 2017  
 Dam of Lot 20; Maternal Family of Lots 21 & 22



**Sniders HP GG Pie Ashton-ETV EX-91**  
 4-01 305D 2X 19,230M 4.7% 908F 3.3% 643P  
 Reserve All-American Jr. Two-Year-Old 2019  
 Maternal Sister to Lot 20

**LOT 20 3 #1 JACK DANIELS-P X ASHANTI IVF EMBRYOS**

Breeder & Owner: GABLE AARON

NEW ENTERPRISE PA

814.766.3272 homesteadguernseys@yahoo.com

PA: -365M +0.13% +6F +0.09% +2P +37CM\$ +31NM\$  
 +1.1PTAT +1.5UDC +2.2FLC -0.4DPR +0.8PL +46PTI 3.05SCS

**SPRINGHILL JACK DANIELS-ETV-P 840003151591419 54GU506 A2A2**

08/23 USDA GPTA -347M +0.06% -5F +0.08% +2P  
 -1.8DPR +0.2PL -88NM\$ 10NM%ile -79CM\$ 58% Rel  
 2.92SCS -2.30HCR 30% Rel -3.00CCR 34% Rel  
 -0.30LIV 29% Rel 0.00GL 42% Rel -4.20EFC 30% Rel  
 AGA 08/23 PTAT +1.3 +1.6UDC +3.3FLC 57%Rel PTI +39

**SNIDERS GARRETT ASHANTI-ET USA000068018756 A2A2**

08/23 USDA GPTA -382M +0.20% +16F +0.09% +2P  
 +1.0DPR +1.3PL +149NM\$ 71NM%ile +153CM\$ 75% Rel  
 3.18SCS-0.40HCR 31% Rel 1.10CCR 44% Rel  
 1.80LIV 37% Rel 2.00GL 43% Rel -0.60EFC 39% Rel  
 4 Rec YDev: -581M +31F +7P  
 3 App 08/23 PTAT +0.8 +1.4UDR +1.1FLC 78%Rel CPI +53  
 Appraisal: EX 94 @ 12-01 (EEEE) 2E  
 2-03 365D 2X 16150M 4.8% 777F 3.4% 544P DHIA  
 3-07 365D 2X 18000M 5.0% 908F 3.7% 663P DHIA  
 5-08 365D 2X 22060M 5.0% 1094F 3.5% 775P DHIA  
 7-00 365D 2X 25960M 4.8% 1236F 3.4% 889P DHIA  
 9-09 365D 2X 24290M 4.4% 1073F 3.1% 748P DHIA  
 3302D 170730M 5.2% 8901F 3.8% 6434P LIFE

All-American Aged Cow 2014

Reserve All-American Aged Cow 2017

Honorable Mention All-American Aged Cow 2019

Member, All-American Exhibitor's Herd 2014

Grand Champion NGS-Louisville 2017

Reserve Grand Champion NGS-Louisville 2014

Total Performance Cow NGS-Harrisburg 2019

Dtrs: SNIDERS HP GG MENTOR AKIRA-ETV 87 @ 5-06 (84/88)

4-03 360D 2X 17840M 4.7% 841F 3.7% 656P DHIA

SNIDERS HP GG PIE ANGEL-ETV 86 @ 4-05 (87/82)

3-02 365D 2X 18454M 5.2% 967F 3.7% 680P DHIA

SNIDERS HP GG PIE ASHTON-ETV 91 @ 5-03 (91/88)

4-01 305D 2X 19230M 4.7% 908F 3.3% 643P 95

Reserve All-American Junior Two-Year-Old 2019

Supreme Champion Missouri State Fair 2023

SNIDERS HP GG ANASTACIA-ETV 88 @ 4-01 (87/82)

3-07 305D 2X 24190M 3.1% 744F 2.9% 706P 67

SNIDERS HP GG ASTONISHING-ETV 86 @ 2-08 (85/88)

2-01 365D 2X 18110M 5.0% 897F 3.7% 664P DHIA

SNIDERS GOLDUST ABSOLUTE-ETV 86 @ 4-03 (84/86)

2-07 365D 2X 21340M 4.2% 898F 3.1% 652P DHIA

• Three (3) #1 IVF embryos

• Sexed semen used for Females

• Resulting calves will be A2A2 by parentage

• Located at Boviteq, WI

• Embryos must be in buyer's possession within 60 days of sale

**LAND OF LIVING P GARRETT-ET USA000000603126 72GU134 A2A2**

**SNIDERS BEN ALIYAH USA000003057464**

Appraisal: 93 @ 4-08 (93/93) Gold Star Dam - 2003

2-02 324D 2X 17000M 4.7% 803F 3.4% 572P 95

3-03 304D 2X 17640M 4.3% 758F 3.6% 629P DHIA

4-02 305D 2X 21670M 5.5% 1196F 3.5% 762P 94

5-07 365D 2X 21930M 4.6% 1016F 3.7% 815P DHIA

7-00 365D 2X 12230M 4.7% 576F 3.6% 439P DHIA

1998D 100930M 4.8% 4865F 3.6% 3655P LIFE

Nominated All-American Aged Cow 2004

Dtrs: SNIDERS OMNI AEROLIN 93 @ 8-06 (93/89)

8-03 365D 2X 24440M 4.4% 1076F 3.3% 805P DHIA

Reserve All-American Aged Cow 2009

SNIDERS LORAL AVALON-ET 90 @ 5-03 (90/90)

4-08 365D 2X 27020M 4.9% 1335F 3.4% 908P DHIA

Reserve All-American Total Performance Cow 2009

SNIDERS TILLER AUSTIN-ET 85 @ 2-05 (84/88)

2-04 305D 2X 27730M 4.9% 1364F 3.7% 1032P\* 94

All-American Winter Yearling 2005

SNIDERS GARRETT ALLYSON-ET 93 @ 10-06 (95/90)

6-05 365D 2X 27070M 4.5% 1229F 3.4% 917P DHIA

Nominated All-American Junior Three-Year-Old 2010

**3D: CEDAR FRINGED ALTANN USA000003045188**

Appraisal: 95 @ 6-11 (95/93) Gold Star Dam - 2001

6-04 365D 2X 31150M 4.8% 1486F 3.0% 941P 94

2999D 168160M 4.8% 8035F 3.3% 5522P LIFE



**Femara Caden Alyse-ET EX-91 2E**  
 125,095M 5.5% 6,160F 3.5% 4,282P Lifetime  
 Dam of Lot 21  
 Maternal Sister to Granddam of Lot 22



**Sniders Yogi Anise-ET EX-94**  
 Granddam of Lot 21  
 3rd Dam of Lot 22

**LOT 21 4, 5 OR 6 #1 REPUTATION X ALYSE IVF EMBRYOS**

**Breeder & Owner: WHEELER BENJAMIN + ERIN AND HOWACRES  
 MARIETTA NY**

**614.208.3529 guernsey95@yahoo.com**

PA: -315M +0.02% -12F +0.01% -10P +53CM\$ +51NM\$  
 +0.9PTAT +2.1UDC +1.1FLC +1.4DPR +2.2PL +24CPI 2.93SCS

**MISS ME REBAS REPUTATION-TW 840003150515719 6GU109 A2A2**

08/23 USDA GPTA -516M -0.01% -25F +0.00% -18P  
 +1.2DPR +2.3PL -36NM\$ 20NM%ile -35CM\$ 79% Rel  
 2.91SCS 1.40HCR 41% Rel 1.60CCR 45% Rel  
 1.10LIV 37% Rel 0.30GL 84% Rel 2.30EFC 40% Rel  
 AGA 08/23 PTAT +0.4 +1.6UDC +0.1FLC 73%Rel PTI -17

**FEMARA CADEN ALYSE-ET USA000078004145 A2A2**

08/23 USDA PTA -113M +0.04% +2F +0.01% -2P  
 +1.5DPR +2.1PL +138NM\$ 69NM%ile +140CM\$ 55% Rel  
 2.94SCS-0.10HCR 15% Rel 1.50CCR 26% Rel  
 0.60LIV 18% Rel 0.10GL 35% Rel 2.20EFC 18% Rel  
 5 Rec YDev: -43M +13F +3P

3 App 08/23 PTAT +1.4 +2.6UDR +2.1FLC 55%Rel CPI +64  
 Appraisal: EX 91 @ 9-00 (VEVVE) 2E

2-03 314D 3X 16090M 4.6% 746F 3.3% 530P 98  
 3-03 305D 3X 17520M 5.0% 868F 3.4% 602P 100  
 4-04 291D 3X 18093M 4.6% 840F 3.4% 613P DHIA  
 5-03 339D 3X 20500M 4.8% 988F 3.5% 711P 100  
 6-04 311D 3X 15430M 5.5% 841F 3.5% 546P 100  
 7-04 305D 3X 17280M 5.0% 870F 3.4% 591P 100  
 8-10 222D 2X 9893M 4.9% 481F 3.2% 314 RIP  
 2296D 125095M 5.5% 6160F 3.5% 4282P LIFE

#154(T) CPI Cow - April 2023

1st Lifetime Production Cow Northeast Spring Show 2023

1st Five-Year-Old New York State Fair 2019

1st Four-Year-Old New York State Fair 2018

1st Senior Two-Year-Old New York State Fair 2016

2nd Aged Cow Guernsey Gold Showcase 2021

2nd Lifetime Production Cow Guernsey Gold Showcase 2023

Dtr: WHEELER ACRES DRONE LIBERTY 85 @ 2-11 (88/82)

- Buyer's choice of four (4) to six (6) #1 IVF embryos
- Sexed semen used for Females
- Resulting calves will be A2A2 by parentage
- Embryos made by TransOva
- Located at Eclipse Genetics, NY
- Embryos must be in buyer's possession within 60 days of sale

**RUTTER BROS ATLAS CADEN USA000068043434**

08/23 USDA PTA -667M -0.01% -32F +0.06% -12P  
 +0.8DPR -1.4PL -202NM\$ 10NM%ile -199CM\$ 78% Rel  
 3.07SCS -0.50HCR 15% Rel 0.30CCR 42% Rel  
 1.00LIV 20% Rel 0.80GL 81% Rel 0.20EFC 22% Rel  
 AGA 08/23 PTAT +0.9 +1.9UDC +1.4FLC 73%Rel PTI -14

**SNIDERS YOGI ANISE-ET USA000068028544**

Appraisal: 94 @ 7-02 (93/91)

2-07 365D 2X 22590M 5.1% 1147F 3.1% 701P DHIA  
 4-05 365D 2X 28590M 5.5% 1578F 3.1% 877P DHIA  
 6-10 365D 2X 28190M 5.7% 1598F 3.4% 950P DHIA  
 1687D 111330M 5.6% 6210F 3.3% 3683P LIFE

Reserve All-American Senior Two-Year-Old 2012

Nominated All-American Four-Year-Old 2014

Member, All-American Best Three Females 2014

Reserve Senior Champion NGS-Harrisburg 2014

Reserve Intermediate Champion NGS-Louisville 2012

Dtrs: WARWICK MANOR GRUMPY ALIYAH-ET 92 @ 4-03 (93/91)

2-03 365D 2X 20960M 4.9% 1026F 3.4% 711P DHIA

HM All-American & Res. Jr. All-American Winter Yearling 2013

WARWICK MANOR CADEN ANISA-ET 85 @ 4-00 (87/86)

FEMARA GRUMPY AYLA-ET 88 @ 7-04 (88/80)

3-02 325D 2X 20970M 4.3% 911F 3.3% 696P 100

WARWICK MANOR GARRETT ASHTON-ET 86 @ 4-04 (85/86)

4-04 358D 2X 29760M 6.2% 1846F 3.2% 948P DHIA

FEMARA GG HP KRINGLE ALICIA-ET 87 @ 2-10 (86/87)

**3D: CEDAR FRINGED ALTANN USA000003045188**

Appraisal: 95 @ 6-11 (95/93) Gold Star Dam - 2001

6-04 365D 2X 31150M 4.8% 1486F 3.0% 941P 94

2999D 168160M 4.8% 8035F 3.3% 5522P LIFE



**Guernsey Grove HP WB Fame Alexa VG-86**  
 3-06 365D 3X 31,160M 4.9% 1,519F 3.4% 1,062P  
 Nominated Jr. All-American Winter Yearling 2018  
 Dam of Lot 22



**JC Drone AppleCrown-ETV**  
 2nd Winter Calf Wisconsin State Fair 2023  
 Full Sister to Lot 22

**LOT 22 4 #1 DRONE X ALEXA IVF EMBRYOS**

**Breeder & Owner: CLARK JENNIFER BERG**  
**LA CROSSE WI**  
**(608) 604-0768 clark-jen@hotmail.com**

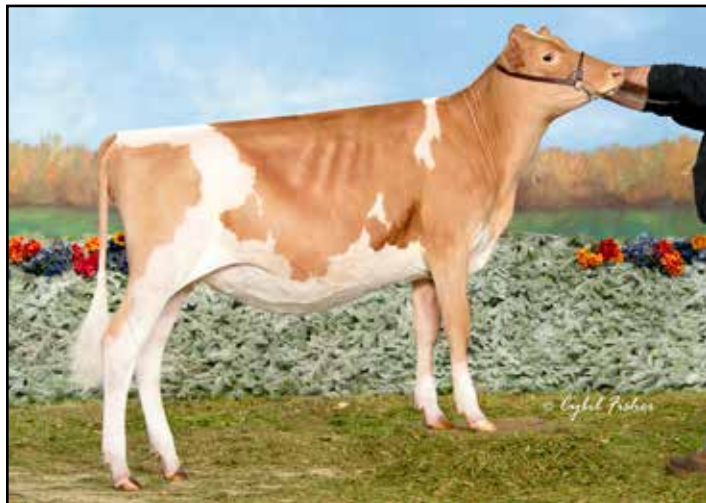
PA: +146M -0.04% +1F -0.03% +0P -135CM\$ -127NM\$  
 +1.4PTAT +0.9UDC +2.1FLC -1.8DPR -0.6PL +18CPI 3.29SCS

**HI GUERN VIEW LEVI DRONE USA000097004646 94GU959 A2A2**

08/23 USDA GPTA +99M -0.08% -10F -0.05% -6P  
 -1.4DPR +0.8PL -126NM\$ 10NM%ile -138CM\$ 90% Rel  
 3.33SCS -1.60HCR 51% Rel -2.20CCR 60% Rel  
 0.20LIV 38% Rel -0.20GL 92% Rel -2.10EFC 47% Rel  
 AGA 08/23 PTAT +1.5 +1.2UDC +2.4FLC 87%Rel PTI +14

**GUERNSEY GROVE HP WB FAME ALEXA 840003131993748 A2A2**

08/23 USDA GPTA +192M +0.01% +11F +0.00% +6P  
 -2.1DPR -1.9PL -127NM\$ 12NM%ile -132CM\$ 68% Rel  
 3.25SCS -2.30HCR 33% Rel -3.90CCR 43% Rel  
 -2.90LIV 36% Rel 0.10GL 44% Rel 2.10EFC 37% Rel  
 2 Rec YDev: +1742M +77F +51P  
 2 App 08/23 PTAT +1.3 +0.5UDR +1.8FLC 70%Rel CPI +22  
 Appraisal: VG 86 @ 6-09 (EEEV+)  
 2-01 365D 3X 24410M 5.1% 1249F 3.5% 851P DHIA  
 3-06 365D 3X 31160M 4.9% 1519F 3.4% 1062P DHIA  
 Nominated Junior All-American Winter Yearling 2018  
 Dtr: JC DRONE APPLECROWN-ETV  
 2nd Winter Calf Wisconsin State Fair Open & Jr. Show 2023



- Four (4) #1 IVF embryos
- Sexed semen used for Females
- Resulting calves will be A2A2 by parentage
- Located in the GMS tank, Columbus, OH
- Embryos must be in buyer's possession within 60 days of sale

**MILLBORNE TILLER FAYES FAME USA000068008443 91GU4843 A2A2**

08/23 USDA PTA -199M -0.05% -18F +0.03% -1P  
 -4.2DPR -2.8PL -352NM\$ 0NM%ile -358CM\$ 95% Rel  
 3.39SCS -4.50HCR 51% Rel -6.90CCR 83% Rel  
 -3.50LIV 60% Rel 1.50GL 95% Rel -0.70EFC 65% Rel  
 AGA 08/23 PTAT +1.6 +1.9UDC +3.8FLC 95%Rel PTI +0

**FEMARA GG HP KRINGLE ALICIA-ET 840003124689907 A2A2**

Appraisal: 87 @ 2-10 (86/87)

**3D: SNIDERS YOGI ANISE-ET USA000068028544**

Appraisal: 94 @ 7-02 (93/91)  
 4-05 365D 2X 28590M 5.5% 1578F 3.1% 877P DHIA  
 1687D 111330M 5.6% 6210F 3.3% 3683P LIFE  
 Reserve All-American Senior Two-Year-Old 2012  
 Nominated All-American Four-Year-Old 2014

**4D: CEDAR FRINGED ALTANN USA000003045188**

Appraisal: 95 @ 6-11 (95/93) Gold Star Dam - 2001  
 6-04 365D 2X 31150M 4.8% 1486F 3.0% 941P 94  
 2999D 168160M 4.8% 8035F 3.3% 5522P LIFE  
 Dam of Aaron, Alstar, Adacka, Alton, Alvin, Activate & Achieve  
 Dam of 16 Excellent Daughters  
 All-American & Jr. All-American Four-Year-Old 2000  
 Reserve All-American & Jr. All-American Jr. Two-Year-Old 1998  
 Junior All-American Five-Year-Old 2001  
 Honorable Mention All-American Aged Cow 2002  
 Grand Champion NGS-Harrisburg 2001

**Femara GG HP Kringle Alyssa-ET**  
 Reserve All-American Winter Calf 2015  
 Junior Champion Wisconsin State Show 2015  
 Full Sister to Granddam of Lot 22

**Dairyman Theo 4928 Dia-EV VG-87 @ 2-06**  
Full Sister to Lot 23



**LOT 23 5 THEO X DINERO IVF EMBRYOS**

**Breeder & Owner: HOARDS DAIRYMAN FARM**  
**FORT ATKINSON WI**

**920.728.4822 hdfarm@hoards.com**

PA: +541M +0.05% +34F +0.01% +19P +346CM\$ +340NM\$  
+0.6PTAT +1.0UDC +1.8FLC -0.6DPR +2.1PL +89CPI 2.84SCS

**RIPLEY FARMS NETWORK C THEO 840003146571505 6GU112 A2A2**

08/23 USDA GPTA -6M +0.14% +25F +0.01% +1P  
+1.2DPR +4.4PL +427NM\$ 90NM%ile +435CM\$ 76% Rel  
2.68SCS -1.9SCR 1.20HCR 41% Rel 1.20CCR 41% Rel  
2.80LIV 37% Rel 0.40GL 81% Rel 2.80EFC 31% Rel  
AGA 08/23 PTAT +0.2 +0.4UDC +0.4FLC 59%Rel PTI +55

**DAIRYMAN NOVAK 3311 DINERO 840003134201911 A2A2**

-08/23 USDA GPTA +1087M -0.04% +42F +0.00% +37P  
-2.4DPR -0.2PL +253NM\$ 87NM%ile +256CM\$ 64% Rel  
2.99SCS -2.70HCR 34% Rel -4.20CCR 39% Rel  
-1.30LIV 33% Rel 0.50GL 42% Rel 0.90EFC 35% Rel  
1 Rec YDev: +3882M +138F +128P  
2 App 08/23 PTAT +1.0 +1.6UDR +3.1FLC 68%Rel CPI +123  
Appraisal: +84 @ 3-07 (VVEV+)  
2-08 365D 3X 26260M 4.4% 1168F 3.7% 969P DHIA  
Dtrs: DAIRYMAN THEO 4928 DIA-ETV 87 @ 2-06 (88/82)  
DAIRYMAN THEO 4929 DAMA-ETV 82 @ 2-06 (82/82)  
*Ten additional daughters rank in the top 130 CPI Heifers!*

- One (1) #1 and four (4) #2 IVF embryos - five (5) total
- Sexed semen used for Females
- Resulting calves will be A2A2 by parentage
- Resulting calves would rank in the top 50 CPI Heifers - August 2023
- Located at Sunshine Genetics, WI
- Embryos must be in buyer's possession within 60 days of sale

**LANG HAVEN GRUMPY NOVAK USA000068042542 7GU446 A2A2**

08/23 USDA GPTA +838M -0.08% +24F -0.03% +23P  
-2.9DPR -0.1PL +189NM\$ 50NM%ile +186CM\$ 97% Rel  
3.07SCS -4.10HCR 73% Rel -5.50CCR 88% Rel  
0.20LIV 63% Rel 2.80GL 99% Rel 2.40EFC 73% Rel  
AGA 08/23 PTAT +0.4 +0.7UDC +0.0FLC 97%Rel PTI +42

**GR-DAIRYMAN SUPERMAN 2574 DAIRY 840003124608036**

**3D: DAIRYMAN NACHO DREAMA USA000070781145**

Appraisal: 74 @ 3-07 (70/77)  
3-01 344D 3X 23880M 4.5% 1068F 3.5% 840P 94

**4D: DAIRYMAN BINGO DREAM USA000068003397**

Appraisal: 83 @ 5-01 (80/86)  
4-05 365D 3X 24070M 4.8% 1158F 3.7% 880P DHIA

**5D: DAIRYMAN KONG DIADORA USA000003067074**

Appraisal: 77 @ 4-08 (77/81)  
9-03 320D 3X 21980M 4.5% 993F 3.2% 708P 94  
2499D 127080M 4.5% 5702F 3.2% 4101P LIFE



**Jensgolden Charming Onadia GP-81**  
Maternal Sister to Lot 24



**Jens Gold Grumpy Oval VG-87**  
#26(T) CPI Cow August 2023  
Maternal Family of Lot 24

**LOT 24 5 #1 CHECKMATE X ONALA IVF EMBRYOS**

**Breeder & Owner: HOARDS DAIRYMAN FARM**  
**FORT ATKINSON WI**

**920.728.4822 hdfarm@hoards.com**

PA: +430M +0.05% +27F +0.03% +18P +396CM\$ +389NM\$  
+0.6PTAT +0.9UDC +0.9FLC +0.7DPR +3.8PL +84CPI 2.79SCS

**COULEE CREST RICHARD CHECKMATE 840003208361479 6GU116 A2A2**

08/23 USDA GPTA +480M -0.09% +5F +0.01% +17P  
+0.9DPR +3.0PL +237NM\$ 65NM%ile +241CM\$ 55% Rel  
2.86SCS -1.3SCR 0.30HCR 32% Rel 0.30CCR 35% Rel  
0.50LIV 29% Rel -1.00GL 42% Rel 4.70EFC 31% Rel  
AGA 08/23 PTAT +0.5 +0.8UDC +0.7FLC 54%Rel PTI +60

**JENSGOLDEN CORDELL ONALA 840003128753804 A1A2**

08/23 USDA GPTA +380M +0.18% +49F +0.04% +19P  
+0.5DPR +4.5PL +540NM\$ 99NM%ile +550CM\$ 69% Rel  
2.71SCS -0.20HCR 34% Rel 0.10CCR 41% Rel  
-0.60LIV 35% Rel 0.60GL 43% Rel 1.50EFC 36% Rel  
5 Rec YDev: +1103M +113F +47P  
3 App 08/23 PTAT +0.6 +1.0UDR +1.1FLC 71%Rel CPI +107  
Appraisal: EX 90 @ 6-03 (EEVEV) Gold Star Dam - 2020  
1-11 305D 2X 12000M 5.6% 674F 3.7% 442P 95  
3-02 365D 2X 21863M 5.5% 1200F 3.7% 816P DHIA  
4-04 339D 2X 22540M 5.7% 1291F 3.7% 836P 96  
5-05 365D 3X 29840M 5.3% 1571F 3.6% 1080P DHIA  
6-07 365D 3X 29080M 5.7% 1650F 3.6% 1044P DHIA  
1877D 120220M 5.6% 6707F 3.7% 4420P LIFE  
#8 CPI Cow August 2023  
Dam of five of the top 140 CPI heifers - August 2023  
Son: DAIRYMAN CHECKMATE OLAF 49GU242 +118GPTI  
#1 Genomic Young Sire - August 2023  
Dtr: JENSGOLDEN CHARMING ONADIA 81 @ 3-08 (81/81)

- Five (5) #1 IVF embryos
- Reverse sorted semen used for Females
- Resulting calves would rank #65 on the CPI Heifer List - August 2023
- Embryos are FULL SISTERS to the #1 Genomic Young Sire!
- Located at Sunshine Genetics, WI
- Embryos must be in buyer's possession within 60 days of sale

**RIPLEY FARMS AARON CORDELL USA000068027378 7GU440 A1A2**

08/23 USDA GPTA +234M +0.07% +23F +0.01% +9P  
-1.4DPR +0.9PL +122NM\$ 40NM%ile +126CM\$ 96% Rel  
2.83SCS -0.30HCR 64% Rel -1.90CCR 85% Rel  
-2.60LIV 64% Rel 1.10GL 98% Rel -0.10EFC 69% Rel  
AGA 08/23 PTAT +0.3 +0.5UDC +0.6FLC 95%Rel PTI +33

**JENSGOLDEN DOUBLE L ONALYN USA000068031379 A1A2**

Appraisal: VG 88 @ 8-08 (VEVE+) Gold Star Dam - 2018  
2-00 288D 2X 13530M 4.7% 632F 3.3% 443P 91  
2-11 311D 2X 15540M 5.0% 778F 3.5% 550P 97  
3-10 337D 2X 21380M 4.6% 991F 3.3% 711P 97  
4-11 304D 2X 17930M 4.7% 845F 3.4% 604P 97  
5-11 308D 2X 19460M 4.9% 952F 3.5% 686P 96  
6-11 305D 2X 19570M 4.3% 849F 3.6% 701P 96  
8-01 305D 2X 20180M 4.6% 927F 3.4% 691P 96  
9-02 326D 2X 20250M 4.7% 947F 3.2% 657P 74  
10-03 257D 2X 14960M 4.1% 614F 3.2% 479P 93  
2887D 169930M 4.6% 7880F 3.4% 5797P LIFE



**Jens Gold Richard Olimint VG-86**  
3-01 354D 3X 36,490M 3.1% 1,129F 3.1% 1,131P  
Maternal Family of Lot 24



**Prairie Cream Am Pie Cordova EX-90**  
 4-07 305D 2X 20,510M 4.3% 891F 3.3% 671P  
 HM All-American Sr. Three-Year-Old 2021  
 Dam of Lot 25



**Four Winds Destiny Child EX-95**  
 3rd Dam of Lot 25

**LOT 25 3 #1 CADET OR MAS X CORDOVA IVF EMBRYOS**

**Breeder & Owner: PRAIRIE CREAM & VALLEY GEM**  
**CUMBERLAND WI**

715.419.0745 vgguernseys@gmail.com  
 PA: +405M -0.13% -4F -0.06% +3P +20CM\$ +23NM\$  
 +1.1PTAT +1.2UDC +2.7FLC -1.1DPR +1.5PL +38PTI 2.91SCS

**HARTDALE JCP CADET 840003237975540 6GU133 A2A2**  
 08/23 USDA GPTA +473M -0.10% +4F -0.04% +9P  
 -0.1DPR +0.4PL +49NM\$ 40NM%ile +46CM\$ 54% Rel  
 2.98SCS -1.40HCR 28% Rel -0.80CCR 30% Rel  
 1.00LIV 28% Rel 0.60GL 31% Rel -3.20EFC 28% Rel  
 AGA 08/23 PTAT +1.0 +1.4UDC +1.9FLC 50%Rel PTI +52

**PRAIRIE CREAM AM PIE CORDOVA 840003143485732 A2A2**  
 08/23 USDA GPTA +337M -0.15% -11F -0.08% -3P  
 -2.0DPR +2.6PL -3NM\$ 35NM%ile -7CM\$ 70% Rel  
 2.83SCS -2.20HCR 37% Rel -2.70CCR 45% Rel  
 0.20LIV 38% Rel 1.20GL 45% Rel -3.20EFC 39% Rel  
 3 Rec YDev: +533M -52F -16P  
 2 App 08/23 PTAT +1.2 +1.0UDR +3.5FLC 71%Rel CPI +24  
 Appraisal: EX 90 @ 5-04 (EEVEV)  
 3-04 305D 2X 18620M 4.0% 749F 3.1% 583P 96  
 4-07 305D 2X 20510M 4.3% 891F 3.3% 671P 97  
 Honorable Mention All-American Sr. Three-Year-Old 2021  
 Member, Unanimous All-American Exhibitor's Herd 2021  
 Reserve Intermediate Champion Minnesota State Fair 2021

**3D: FOUR WINDS DESTINY CHILD USA000003073037**

Appraisal: 95 @ 6-10 (93/92)  
 6-06 365D 2X 28230M 4.5% 1283F 2.9% 813P DHIA  
 Unanimous All-American Junior Three-Year-Old 2004  
 Unanimous All-American Junior Two-Year-Old 2003  
 All-American Four-Year-Old 2005  
 All-American Aged Cow 2008  
 All-American Summer Yearling 2002  
 Nominated All-American Total Performance Cow 2008  
 Grand Champion NGS-Madison 2005 & 2008  
 Grand Champion NGS-Louisville 2004 & 2008  
 Nine Excellent Daughters

**4D: FOUR WINDS MM DEE DESTINY-ET USA000003057100**

Appraisal: 93 @ 4-06 (92/92)  
 4-00 365D 2X 25410M 4.8% 1210F 3.3% 842P DHIA  
 Unanimous All-American Junior Three-Year-Old 2001  
 All-American Junior Two-Year-Old 2000  
 All-American Four-Year-Old 2002

- Three (3) #1 IVF embryos
- Buyer's choice of Cadet or a mutually agreeable sire
- Sexed semen used for Females
- Resulting calves will be A2A2 by parentage
- Located at Scenic Hill Embryo Transfer, WI
- Embryos must be in buyer's possession within 60 days of sale

**INDIAN ACRES AMERICAN PIE USA000068016348 31GU618 A2A2**

08/23 USDA GPTA +54M -0.17% -28F -0.03% -4P  
 -2.1DPR +3.1PL -59NM\$ 10NM%ile -57CM\$ 98% Rel  
 2.74SCS -3.80HCR 70% Rel -3.20CCR 90% Rel  
 0.10LIV 74% Rel 0.80GL 97% Rel -7.00EFC 79% Rel  
 AGA 08/23 PTAT +0.1 +0.3UDC +2.0FLC 98%Rel PTI -16

**FOUR WINDS DC CRYSTAL-ET 840003012311921 A2A2**

Appraisal: EX 90 @ 5-04 (EEVVE)  
 2-02 365D 3X 24530M 5.3% 1305F 3.2% 791P DHIA  
 3-06 365D 3X 27660M 5.7% 1579F 3.1% 864P DHIA  
 4-09 365D 3X 27090M 5.4% 1452F 3.2% 878P DHIA

**5D: WESTLYNN TOM DEE USA000002963901**

Appraisal: 96 @ 10-05  
 5-11 365D 2X 26540M 4.8% 1284F 3.6% 961P DHIA  
 1807D 110740M 4.7% 5208F 3.6% 4001P LIFE  
 All-American 1993, 1994, 1995 & 1996  
 Reserve All-American 1991  
 Reserve Supreme Champion World Dairy Expo  
 Grand Champion NGS-Madison 1994, 1995 & 1996



**Retso AP Kiya-ETV EX-90**

3-05 358D 2X 28,399M 3.6% 1,036F 3.6% 1,033P RIP  
 Dam of Lot 26

**LOT 26 5 #1 TORPEDO X KIYA IVF EMBRYOS**

**Breeder & Owner: JOHNSON SYLVIA  
 TUNBRIDGE VT**

**614.208.3529 guernsey95@yahoo.com**

PA: +18M -0.03% -5F +0.04% +8P +52CM\$ 46NM\$  
 +0.8PTAT +1.1UDC +2.7FLC -0.4DPR +1.3PL +45CPI 2.90SCS

- Five (5) #1 IVF embryos
- Reverse sorted semen used for females
- Embryos located at Vytelle, NY
- Resulting calves will be A2A2 by parentage
- Embryos must be in buyer's possession within 60 days of sale

**LANG HAVEN LONDON TORPEDO 840003233414503 54GU520 A2A2**

08/23 USDA GPTA +222M +0.02% +13F +0.04% +14P  
 -0.2DPR -0.2PL +71NM\$ 40NM%ile +75CM\$ 58% Rel  
 3.01SCS -0.10HCR 29% Rel -0.40CCR 35% Rel  
 -0.60LIV 29% Rel 1.60GL 43% Rel -1.70EFC 29% Rel  
 AGA 08/23 PTAT +1.8 +2.1UDC +4.2FLC 58%Rel PTI +95

**RETSO AP KIYA-ETV USA000097007815 A2A2**

08/23 USDA GPTA -187M -0.08% -23F +0.04% +1P  
 -0.6DPR +2.8PL +21NM\$ 41NM%ile +29CM\$ 68% Rel  
 2.79SCS -2.30HCR 36% Rel -1.60CCR 44% Rel  
 0.80LIV 37% Rel -0.40GL 44% Rel -2.30EFC 38% Rel  
 2 Rec YDev: +825M -39F +51P  
 3 App 08/23 PTAT -0.3 +0.1UDR +1.2FLC 63%Rel CPI -6  
 Appraisal: EX 90 @ 4-00 (VEVVE)  
 1-11 305D 2X 18568M 4.0% 737F 3.4% 638P 95  
 3-05 358D 2X 28399M 3.6% 1036F 3.6% 1033P RIP  
 Dtrs: HOWACRES R CARA WITH A K 83 @ 2-07 (80/86)  
*HM Intermediate Champion Northeast Spring Show 2023*  
*2nd Jr. Two-Year-Old New England Classic 2023*  
 HOWACRES K JEAN-ETV-P  
*4th Summer Yearling NJS-Harrisburg 2023*  
 HOWACRES KIYAS KIWI-ETV  
*5th Summer Yearling NJS-Harrisburg 2023*



**Howacres K Jean-ETV-P**  
 Maternal Sister to Lot 26

**Kiya!**

Honorable Mention All-American Jr. Two-Year-Old 2021  
 Nominated All-American Spring Calf 2019  
 Nominated All-American Spring Yearling 2020  
 Reserve Junior All-American Spring Calf 2019  
 HM Junior All-American Junior Two-Year-Old 2021  
 Reserve Grand Champion Northeast Spring Show 2023  
 Res. Grand Champion Guernsey Gold Showcase 2023  
 Res. Grand Champion New England Classic 2023  
 HM Grand Champion New York Spring Carousel 2023  
 Res. Grand Champion Northeast Spring Jr. Show 2021  
 Res. Jr. Champion New England Classic 2019  
 Res. Jr. Champion New Hampshire State Show 2019

**INDIAN ACRES AMERICAN PIE USA000068016348 31GU618 A2A2**

08/23 USDA GPTA +54M -0.17% -28F -0.03% -4P  
 -2.1DPR +3.1PL -59NM\$ 10NM%ile -57CM\$ 98% Rel  
 2.74SCS -3.80HCR 70% Rel -3.20CCR 90% Rel  
 0.10LIV 74% Rel 0.80GL 97% Rel -7.00EFC 79% Rel  
 AGA 08/23 PTAT +0.1 +0.3UDC +2.0FLC 98%Rel PTI -16

**LUCKYVALE GRUMPY KISS-ET USA000078000733**

Appraisal: 88 @ 4-02 (91/77)  
 2-07 365D 2X 23860M 4.3% 1016F 3.4% 803P DHIA  
*HM Junior All-American & Nominated All-American Fall Yearling 2015*  
*Junior Champion New York State Fair Jr. Show 2014*  
 Dtr: RETSO AP KITKAT-ET 86 @ 3-06 (86/83)  
 1-10 299D 2X 15440M 4.5% 694F 3.5% 541P 93  
*Reserve All-American Yearling in Milk 2020*

**3D: LUCKYVALE YOGI KIARA USA000068027293**

Appraisal: 88 @ 3-11 (88/86)  
 2-07 365D 2X 20880M 3.7% 768F 3.3% 687P DHIA  
*Junior All-American & HM All-American Fall Calf 2010*  
*Junior All-American & Reserve All-American Fall Yearling 2011*  
*Reserve Junior All-American Senior Two-Year-Old 2012*  
*Reserve Junior Champion NGS-Madison 2011*  
*Junior Champion NJS-Madison 2011*  
 Dtrs: LUCKYVALE GRUMPY KAT-ET 90 @ 4-02 (90/88)  
 3-00 319D 3X 23710M 4.7% 1117F 3.5% 819P 88  
 LUCKYVALE GRUMPY KAZ-ET 91 @ 4-01 (90/88)  
 3-07 365D 2X 33150M 5.1% 1681F 3.5% 1145P 96  
*Four-Time All-American Nominee*

**4D: RIPLEY FARMS ADACKA C KATHY USA000068013944**

Appraisal: 83 @ 3-04 (79/86)

**5D: RIPLEY FARMS G CONNI KATE-ET USA000003083059**

Appraisal: 88 @ 3-05 (90/85)  
 3-01 305D 3X 22000M 4.4% 969F 3.4% 738P 97

**6D: LOW BROOK GOLDFOOT CONNY USA000003067544**

Appraisal: 90 @ 4-04 (86/90)  
 1715D 123780M 4.7% 5824F 3.6% 4404P LIFE



**Springhill Fame Calypso-ETV EX-93**  
 5-02 365D 28,010M 4.6% 1,296F 3.6% 1,005P  
 Maternal Sister to Lot 27



**Springhill Tiller Calico-ETV**  
 Unanimous All-American Fall Yearling 2022  
 Maternal Sister to Lot 27

**LOT 27 4 #1 JC PENNEY X CONNY IVF EMBRYOS**

**Breeder & Owner: SPRINGHILL**

**BIG PRAIRIE OH**

**330.473.9660 springhill.chris@gmail.com**

PA: +310M +0.03% +12F +0.04% +12P +101CM\$ +98NM\$  
 +1.1PTAT +0.7UDC +1.7FLC -1.6DPR +0.5PL +40CPI 3.02SCS

- Four (4) #1 IVF embryos
- Reverse sorted semen used for females
- Embryos located at TransOva, MD
- Embryos must be in buyer's possession within 60 days of sale

**SPRINGHILL JC PENNEY-ET 840003151591406 6GU114 A2A2**

08/23 USDA GPTA +162M +0.06% +5F +0.02% +0P  
 -2.9DPR +0.1PL -62NM\$ 10NM%ile -60CM\$ 72% Rel  
 2.99SCS +0.4SCR -3.30HCR 43% Rel -4.60CCR 42% Rel  
 -0.40LIV 37% Rel 0.80GL 54% Rel -2.30EFC 37% Rel  
 AGA 08/23 PTAT +1.2 +1.5UDC +2.5FLC 64%Rel PTI +28

**NELLS GLOW CHALLENGE CONNY USA000068028537**

08/23 USDA GPTA +444M -0.01% +18F +0.05% +23P  
 -0.3DPR +0.9PL +257NM\$ 87NM%ile +261CM\$ 74% Rel  
 3.04SCS -2.10HCR 38% Rel -0.60CCR 47% Rel  
 -0.60LIV 41% Rel 0.00GL 45% Rel -4.30EFC 40% Rel  
 5 Rec YDev: +1210M +54F +55P  
 3 App 08/23 PTAT +0.9 -0.1UDR +0.8FLC 75%Rel CPI +51  
 Appraisal: 93 @ 7-11 (92/91)  
 2-03 365D 2X 19560M 4.8% 930F 3.6% 695P 101  
 3-05 305D 2X 21110M 4.5% 954F 3.4% 724P 102  
 4-08 365D 2X 25430M 4.5% 1147F 3.4% 872P DHIA  
 6-03 334D 2X 24810M 4.8% 1179F 3.6% 887P 102  
 7-02 365D 2X 24990M 5.1% 1267F 4.0% 988P DHIA  
 10-06 303D 2X 14320M 4.7% 677F 3.2% 463P 96  
 2546D 156440M 4.9% 7597F 3.7% 5725P LIFE

*Reserve Junior All-American Five-Year-Old 2013*

Dtrs: NELLS GLOW CONNY OF SPRINGHILL 86 @ 3-09 (84/86)

2-05 365D 2X 25170M 4.8% 1196F 3.5% 877P DHIA  
 SPRINGHILL JUDGMENT CLEMENTINE 87 @ 4-00 (87/87)  
 3-07 365D 2X 19400M 4.8% 922F 3.6% 694P DHIA  
 SPRINGHILL KOJACK COLUMBIA-ETV 90 @ 5-09 (89/88)  
 4-04 365D 2X 32380M 4.1% 1341F 3.4% 1116P DHIA  
 SPRINGHILL FAME CALYPSO-ETV 93 @ 6-01 (93/94)  
 5-02 365D 2X 28010M 4.6% 1296F 3.6% 1005P DHIA  
 SPRINGHILL TILLER CALICO-ETV

*Unanimous All-American Fall Yearling 2022*

*All-American Fall Calf 2021*

**IDLE GOLD E CHALLENGE-ET USA000000604268 1GU418 A2A2**

08/23 USDA GPTA -541M +0.16% +2F +0.10% -1P  
 +1.0DPR +0.9PL +135NM\$ 40NM%ile +146CM\$ 98% Rel  
 2.88SCS -2.90HCR 81% Rel 1.30CCR 95% Rel  
 -0.80LIV 86% Rel -0.20GL 99% Rel -6.30EFC 88% Rel  
 AGA 08/23 PTAT -0.3 -0.4UDC +0.9FLC 98%Rel PTI +7

**RIPLEY FARMS SP CONI SUE-ET USA000068008643**

Appraisal: 82 @ 2-10 (82/85)  
 2-04 365D 2X 25550M 4.3% 1086F 3.3% 851P DHIA  
 3-10 307D 2X 19580M 4.4% 863F 3.6% 697P 101

**3D: LOW BROOK GOLDFOOT CONNY USA000003067544**

Appraisal: 90 @ 4-04 (86/90)  
 2-00 365D 2X 29014M 4.1% 1193F 3.1% 903P 70  
 1715D 123780M 4.7% 5824F 3.6% 4404P LIFE

**Nells Glow Challenge Conny EX-93**

156,440M 4.9% 7,597F 3.7% 5,725P

Dam of Lot 27





**Millborne Hillpoint S Fiesta-ET EX-93**  
 3-07 365D 21,830M 4.6% 1,010F 3.7% 801P  
 Granddam of Lot 28

**Fiesta!**

- Unanimous All-American Four-Year-Old 2015
- Unanimous All-American Sr. Two-Year-Old 2013
- All-American Fall Yearling 2012
- Honorable Mention All-American Sr. 3-Year-Old 2014
- Reserve All-American & Jr. All-American Fall Calf 2011
- Nominated All-American Five-Year-Old 2016
- Grand Champion NGS-Harrisburg 2014
- 4x National Show Reserve Grand Champion
- 3x National Show Intermediate Champion
- Member, Unan. All-American Dam & Daughter 2015
- Multiple All-American Nominated Daughters

**LOT 28 4 #1 JAMES DEAN X FIESTA IVF EMBRYOS**

Breeder & Owner: SPRINGHILL

BIG PRAIRIE OH

330.473.9660 springhill.chris@gmail.com

PA: -245M +0.10% +5F +0.08% +6P -79CM\$ -79NM\$  
 +1.1PTAT +1.2UDC +1.9FLC -2.2DPR -0.8PL +26CPI 3.19SCS

- Four (4) #1 IVF embryos
- Sexed semen used for Females
- Located at TransOva, MD
- Embryos must be in buyer's possession within 60 days of sale

**SPRINGHILL JAMES DEAN-ETV 840003151591428 551GU911 A2A2**

08/23 USDA GPTA -371M +0.15% +9F +0.08% +2P  
 -1.3DPR +2.0PL +105NM\$ 40NM%ile +116CM\$ 58% Rel  
 2.82SCS -1.60HCR 33% Rel -2.30CCR 34% Rel  
 1.50LIV 29% Rel 0.00GL 42% Rel -3.80EFC 30% Rel  
 AGA 08/23 PTAT +1.1 +1.8UDC +2.0FLC 57%Rel PTI +50

**COULEE CREST LUXURY SPIDER-ET USA00000604229 1GU415**

08/23 USDA GPTA +285M +0.08% +27F +0.09% +25P  
 -2.9DPR -3.4PL -60NM\$ 10NM%ile -57CM\$ 97% Rel  
 3.30SCS -0.80HCR 71% Rel -3.10CCR 91% Rel  
 -3.70LIV 76% Rel -0.30GL 98% Rel 7.50EFC 79% Rel  
 AGA 08/23 PTAT +0.4 +0.0UDC -1.3FLC 97%Rel PTI +15

**MILLBORNE HILLPOINT S FIESTA-ET USA000068041840**

08/23 USDA GPTA -119M +0.04% +1F +0.08% +10P  
 -3.0DPR -3.6PL -263NM\$ 2NM%ile -267CM\$ 77% Rel  
 3.55SCS-2.20HCR 36% Rel -4.20CCR 50% Rel  
 -3.60LIV 40% Rel 0.00GL 56% Rel 0.00EFC 41% Rel  
 3 Rec YDev: -1124M -31F +2P  
 5 App 08/23 PTAT +1.0 +0.6UDR +1.8FLC 74%Rel CPI +3  
 Appraisal: 93 @ 6-01 (92/93)  
 2-04 365D 2X 18430M 5.0% 920F 3.6% 662P DHIA  
 3-07 365D 2X 21830M 4.6% 1010F 3.7% 801P DHIA  
 5-08 314D 2X 11670M 4.8% 558F 4.0% 469P 97  
 Dtrs: MILLBORNE HILLPOINT S FLARE 85 @ 5-06 (81/87)  
 3-06 365D 2X 22450M 3.8% 863F 3.4% 769P DHIA  
 MILLBORNE HILLPOINT JAC FIZZ-ET 87 @ 3-02 (87/86)  
 2-06 365D 2X 22660M 3.4% 775F 3.2% 725P DHIA  
 Reserve All-American Spring Calf 2014  
 MILLBORNE HP ALYMO FINALLY-ETV 91 @ 5-03 (95/82)  
 2-01 365D 2X 18765M 5.2% 977F 3.6% 681P DHIA  
 Reserve All-American Junior Two-Year-Old 2018  
 MILLBORNE HP DRONE FELICITY-ETV 86 @ 3-03 (86/86)  
 2-03 365D 2X 16320M 4.3% 701F 3.4% 557P 97  
 MILLBORNE HP FRECKLES-ETV 84 @ 2-10 (83/82)  
 MILLBORNE HP FUTURE LADY-ETV 88 @ 3-04 (90/83)  
 MILLBORNE HP FABULOUS-ETV 86 @ 4-02 (86/85)  
 3-03 365D 2X 22520M 4.3% 962F 3.3% 737P DHIA  
 Reserve Jr. All-American & Nom. All-American Summer Yearling 2019

**MILLBORNE TILLER FANCY USA000068002577**

Appraisal: 92 @ 4-08 (90/92)  
 2-00 365D 2X 18190M 4.2% 760F 3.4% 613P DHIA  
 3-05 365D 2X 23380M 4.4% 1039F 3.6% 843P DHIA  
 4-10 365D 2X 19300M 4.5% 876F 3.5% 680P DHIA  
 Nominated All-American Four-Year-Old 2008

**3D: R WAY ROYAL OAK FAYE USA000003068719 A2A2**

Appraisal: 94 @ 4-03 (94/91)  
 4-00 365D 2X 19590M 4.6% 892F 3.5% 688P DHIA  
 Unanimous All-American Junior Three-Year-Old 2003  
 All-American Junior Two-Year-Old 2002  
 Reserve All-American Four-Year-Old 2004  
 Honorable Mention All-American Five-Year-Old 2005  
 Honorable Mention All-American Summer Yearling 2001  
 Intermediate Champion NGS-Madison & Harrisburg 2003  
 Reserve Grand Champion NGS-Harrisburg & Louisville 2003  
 Reserve Grand Champion NGS-Madison 2004  
 Dtr: R WAY MILLBORNE FAYES FLAIR 92 @ 3-09 (92/91)  
 4-05 350D 2X 19750M 4.2% 839F 3.2% 641P 99

**4D: CALLUMLEA BILLBOARD FLOSSIE USA000003050310**

Appraisal: 89 @ 5-05  
 Nominated All-American Fall Calf 1997



**Knapps Drone On The Rocks VG-88**  
2-02 365D 2X 18,660M 5.3% 993F 3.5% 655P  
HM All-American Jr. 2-Year-Old 2022  
Dam of Lot 29



**Knapps Ace On The Money-ET VG-88**  
Granddam of Lot 29

**LOT 29 2 #1 AMERICAN PIE X ON THE ROCKS IVF EMBRYOS**

Breeder & Owner: **KNAPP LANDEN**  
**EPWORTH IA**

563-590-5754 austinknapp25@gmail.com

PA: -88M -0.03% -10F +0.00% -3P -4CM\$ -6NM\$  
+0.8PTAT +0.7UDC +2.3FLC -1.2DPR +2.5PL +16CPI 2.90SCS

**INDIAN ACRES AMERICAN PIE USA000068016348 31GU618 A2A2**

08/23 USDA GPTA +54M -0.17% -28F -0.03% -4P  
-2.1DPR +3.1PL -59NM\$ 10NM%ile -57CM\$ 98% Rel  
2.74SCS -3.80HCR 70% Rel -3.20CCR 90% Rel  
0.10LIV 74% Rel 0.80GL 97% Rel -7.00EFC 79% Rel  
AGA 08/23 PTAT +0.1 +0.3UDC +2.0FLC 98%Rel PTI -16

**KNAPPS DRONE ON THE ROCKS USA000097009749 A2A2**

08/23 USDA GPTA -229M +0.11% +9F +0.03% -2P  
-0.2DPR +1.9PL +48NM\$ 48NM%ile +49CM\$ 65% Rel  
3.06SCS -1.40HCR 31% Rel -0.70CCR 36% Rel  
0.50LIV 34% Rel 1.30GL 41% Rel -3.10EFC 31% Rel  
1 Rec YDev: +322M +49F -3P  
1 App 08/23 PTAT +1.4 +1.1UDR +2.6FLC 67%Rel CPI +49  
Appraisal: VG 88 @ 2-05 (VE+VV)  
2-02 365D 2X 18660M 5.3% 993F 3.5% 655P DHIA  
Honorable Mention All-American Junior Two-Year-Old 2022

- Two (2) #1 IVF embryos
- Reverse sorted semen used for Females
- Resulting calves will be A2A2 by parentage
- Embryos can be transported via TransOva
- Embryos must be in buyer's possession within 60 days of sale

**HI GUERN VIEW LEVI DRONE USA000097004646 94GU959 A2A2**

08/23 USDA GPTA +99M -0.08% -10F -0.05% -6P  
-1.4DPR +0.8PL -126NM\$ 10NM%ile -138CM\$ 90% Rel  
3.33SCS -1.60HCR 51% Rel -2.20CCR 60% Rel  
0.20LIV 38% Rel -0.20GL 92% Rel -2.10EFC 47% Rel  
AGA 08/23 PTAT +1.5 +1.2UDC +2.4FLC 87%Rel PTI +14

**KNAPPS ACE ON THE MONEY-ET USA000078006212**

Appraisal: 88 @ 2-02 (89/85)  
2-01 300D 2X 12700M 5.8% 732F 3.5% 441P 96  
2-11 333D 2X 9570M 5.9% 569F 3.5% 334P 63  
3-10 365D 2X 15140M 6.2% 941F 3.3% 505P DHIA  
4-11 328D 2X 12930M 6.6% 853F 3.7% 484P 95  
Nominated Junior All-American Junior Two-Year-Old 2017

**3D: KNAPPS AARON OLIVIA USA000068029593**

Appraisal: 93 @ 5-03 (92/93)  
3-05 365D 2X 26680M 5.4% 1441F 3.1% 819P DHIA  
4-09 365D 2X 24080M 4.9% 1191F 3.2% 775P DHIA  
Junior All-American & HM All-American Four-Year-Old 2013  
HM Junior All-American Five-Year-Old 2014  
Dtrs: KNAPPS OUT OF THIS WORLD-ETV 93 @ 7-04 (93/92)  
5-00 365D 2X 22640M 4.5% 1009F 3.4% 768P DHIA  
KNAPPS ACE OUTRAGEOUS-ETV 93 @ 6-02 (93/91)  
5-10 365D 2X 32830M 5.9% 1942F 3.6% 1193P DHIA



**Knapps Aaron Olivia EX-93**  
3-05 365D 2X 26,680M 5.4% 1,441F 3.1% 819P  
Junior All-American Four-Year-Old 2013  
3rd Dam of Lot 29



**Skoda Grove Legend Roxy VG-89 @ 2-09**

Nominated Jr. All-American Winter Calf 2021  
 1st Sr. 2-Year-Old Guernsey Gold Showcase 2023  
 Dam of Lot 30

**LOT 30 4 #1 MAS X ROXY IVF EMBRYOS**

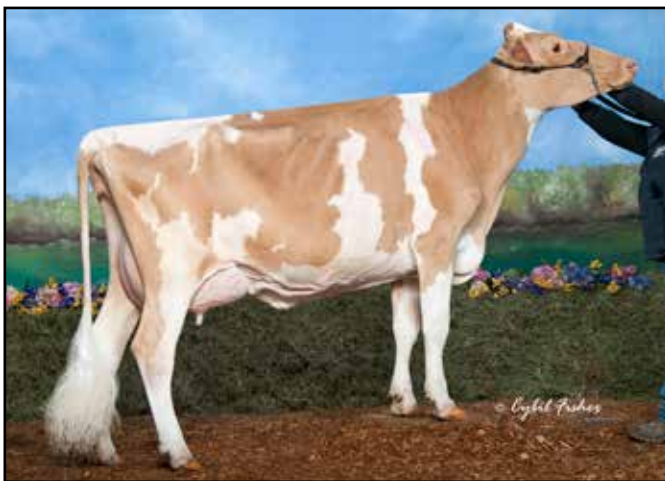
Breeder & Owner: SKODA RYAN & CRYSTIL LEE  
 CRARYVILLE NY  
 518-774-1085 skod14@yahoo.com

**MUTUALLY AGREEABLE SIRE**

**SKODA GROVE LEGEND ROXY 840003215003788 A1A2**

08/23 USDA GPTA +757M -0.06% +23F +0.00% +25P  
 -3.0DPR -0.8PL +85NM\$ 56NM%ile +86CM\$ 58% Rel  
 3.04SCS-0.40HCR 35% Rel -3.30CCR 41% Rel  
 -3.40LIV 35% Rel -0.40GL 42% Rel 1.60EFC 36% Rel  
 0 App 08/23 PTAT +1.3 +1.9UDR +1.9FLC 57%Rel CPI +70  
 2-05 305D 2X 24544M 4.8% 1189F 3.3% 820P Proj. Act.  
 Appraisal: VG 89 @ 2-09 (VVVVE)

Nominated Junior All-American Winter Calf 2021  
 3rd Winter Calf NJS-Madison 2021  
 HM Intermediate Champion GG Showcase & NE Classic 2023  
 1st Senior Two-Year-Old Guernsey Gold Showcase 2023  
 2nd Senior Two-Year-Old New England Classic 2023



**Maplehurst Royalty Ruby-TRI VG-89**

2-06 365D 2X 23,260M 4.2% 980F 2.9% 677P  
 4th Dam of Lot 30

**Millborne Faria Cordell River EX-90**

4-00 305D 2X 34,860M\* 6.0% 2,084F\* 2.9% 1,019P  
 105,050M 5.1% 5,386F 3.1% 3,213P Lifetime  
 Granddam of Lot 30

- Four (4) #1 IVF embryos
- Embryos to be by a Mutually Agreeable Sire
- Embryos to be made by January 1, 2024

**COULEE CREST GRUMPY LEGEND-ET USA000068045040 7GU451 A2A2**

08/23 USDA GPTA +597M -0.09% +11F +0.02% +24P  
 -3.9DPR -2.5PL -58NM\$ 15NM%ile -58CM\$ 97% Rel  
 3.15SCS -0.50HCR 67% Rel -5.00CCR 86% Rel  
 -4.40LIV 64% Rel -1.10GL 98% Rel 4.60EFC 70% Rel  
 AGA 08/23 PTAT +1.0 +1.1UDC +1.4FLC 96%Rel PTI +34

**MILLBORNE FARIA CORDELL RIVER 840003005473277 A1A1**

Appraisal: EX 90 @ 3-03 (VEVVE)  
 2-01 307D 2X 23970M 4.1% 992F 2.9% 707P 95  
 3-01 306D 2X 27690M 4.6% 1264F 3.1% 867P 98  
 4-00 305D 2X 34860M\*6.0% 2084F\*2.9% 1019P 98  
 1151D 105050M 5.1% 5386F 3.1% 3213P LIFE  
 2nd Senior Two-Year-Old New England Classic 2019  
 2nd Senior Three-Year-Old Northeast Fall Show 2020  
 3rd Senior Three-Year-Old Guernsey Gold Showcase 2020  
 Dtr: SKODA GROVE LATIMER RUBY 87 @ 4-08 (90/83)  
 #55(T) CPI Cow August 2023

**3D: MILLBORNE FARIA YOGIBEAR RACHEL USA000068038893**

Appraisal: 88 @ 4-05 (90/83)  
 3-11 365D 2X 28590M 4.0% 1133F 3.0% 855P DHIA

**4D: MAPLEHURST ROYALTY RUBY-TRI CAN000009594145**

Appraisal: 89 @ 3-10 (90/86)  
 2-06 365D 2X 23260M 4.2% 980F 2.9% 677P DHIA  
 Member, Reserve All-American Produce of Dam 2010

**5D: MAPLEHURST LEWIS'S REGINA CAN000010033559**

Appraisal: VG 87 @ 6-10 (85/85) CAN  
 5-11 365D 2X 24553M 3.8% 937F 3.2% 794P CAN  
 1868D 112334M 3.8% 4277F 3.2% 3640P LIFE

**6D: MAPLEHURST BJ REJOYCE ET CAN200740**

Appraisal: VG 85 @ 4-03 (85/80) CAN  
 4-09 365D 2X 19678M 3.9% 769F 3.5% 690P CAN

**7D: LAESCHLAND MERCURY BRIDGET CAN199486**

Appraisal: VG 86 @ 3-00 (85/86) CAN  
 3-11 305D 2X 21740M 4.4% 955F 3.6% 789P CAN

**8D: LAESCHLAND TS BIDDY USA000002845925**

Appraisal: 94 @ 9-09 Gold Star Dam - 1988  
 9-03 365D 2X 28930M 4.5% 1298F 3.4% 995P DHIA  
 3178D 167220M 4.9% 8262F 4.0% 6703P LIFE



**Anne!**

Reserve All-American Aged Cow 2004  
 Junior All-American Four-Year-Old 2002  
 Reserve Jr. All-American Aged Cow 2004  
 Nominated All-American Total Performance Cow 2005  
 Nominated All-American Aged Cow 2005  
 Nominated Jr. All-American Aged Cow 2005  
 Grand Champion NJS-Madison 2002 & 2004  
 Grand Champion Indiana State Fair 2002  
 Gold Star Dam Recognition - 2007  
 Dam of Advance & Answer

**Villa Crest I Anne EX-94 GSD**

206,750M 5.3% 11,037F 3.3% 6,862P Lifetime  
 3rd Dam of Lot 31

**LOT 31 3 #1 MCDREAMY OR MAS X AYLA IVF EMBRYOS**

**Breeder & Owner: PRAIRIE CREAM & VALLEY GEM  
 CUMBERLAND WI**

**715.419.0745 vgguernseys@gmail.com**

PA: -281M +0.01% -13F +0.02% -8P -19CM\$ -25NM\$  
 +0.2PTAT +0.5UDC +1.3FLC -0.6DPR +2.5PL -2CPI 2.76SCS

**VALLEY GEM RICHARD MCDREAMY-ETV USA000097013125 6GU131 A2A2**

08/23 USDA GPTA -225M +0.09% +5F +0.07% +5P  
 +0.0DPR +2.1PL +163NM\$ 50NM%ile +172CM\$ 58% Rel  
 2.86SCS 0.10HCR 30% Rel -0.10CCR 34% Rel  
 0.30LIV 29% Rel -0.50GL 39% Rel 4.00EFC 30% Rel  
 AGA 08/23 PTAT +1.3 +1.7UDC +2.1FLC 57%Rel PTI +58

**VILLA CREST YOGI AYLA USA000078002867**

08/23 USDA PTA -616M +0.18% +2F +0.06% -11P  
 +0.9DPR +1.8PL +10NM\$ 38NM%ile +19CM\$ 52% Rel  
 2.77SCS 0.10HCR 24% Rel 1.50CCR 37% Rel  
 1.70LIV 30% Rel -0.80GL 35% Rel -3.70EFC 29% Rel  
 5 Rec YDev: -1179M +9F -17P  
 3 App 08/23 PTAT +0.2 +0.7UDR +0.6FLC 51%Rel CPI +13  
 Appraisal: VG 89 @ 5-11 (EEEEVV)  
 1-10 362D 2X 17380M 6.0% 1043F 3.6% 625P 96  
 2-11 352D 2X 22770M 6.3% 1432F 3.6% 809P 96  
 4-00 327D 2X 20610M 5.6% 1145F 3.6% 734P 95  
 4-11 299D 2X 20180M 5.7% 1144F 3.4% 695P 96  
 5-10 359D 2X 23330M 5.8% 1362F 3.4% 794P 97  
 7-01 255D 2X 11770M 4.9% 572F 3.6% 425P 70  
 1954D 116040M 5.8% 6698F 3.5% 4082P LIFE  
 3rd Lifetime Production Cow NGS-Louisville 2021

- Three (3) #1 IVF embryos
- Buyer's choice of McDreamy or a mutually agreeable sire
- Sexed semen used for Females
- Located at Scenic Hill Embryo Transfer, WI
- Embryos must be in buyer's possession within 60 days of sale

**EDGEWATER MEADOWS YOGIBEAR-ET USA000000604917 7GU402 A2A2**

08/23 USDA GPTA -498M +0.13% +0F +0.04% -10P  
 +0.2DPR +1.2PL -36NM\$ 20NM%ile -32CM\$ 99% Rel  
 2.95SCS -1.20HCR 78% Rel -0.20CCR 95% Rel  
 0.10LIV 86% Rel -1.10GL 99% Rel -1.00EFC 87% Rel  
 AGA 08/23 PTAT +1.2 +1.4UDC +1.1FLC 99%Rel PTI +19

**VILLA CREST MM ANNE ROSE-ET USA000068028685**

Dtr: VILLA CREST YOGI ASA 85 @ 4-03 (82/85)  
 3-09 365D 2X 21550M 5.8% 1240F 3.3% 709P DHIA

**3D: VILLA CREST I ANNE USA000003056840**

Appraisal: 94 @ 8-01 (94/92) Gold Star Dam - 2007  
 7-00 365D 2X 30180M 5.1% 1525F 3.2% 964P 93  
 3354D 206750M 5.3% 11037F 3.3% 6862P LIFE  
 Three-time All-American Nominee

**4D: VILLA CREST CAP ARIANA USA000003042344**

Appraisal: 88 @ 3-06



**Springhill Double Jazmin-ET EX-92**  
 102,290M 6.2% 6,334F 3.8% 3,847P Lifetime  
 HM Junior All-American 2012 & 2013  
 Granddam of Lot 32



**Dix Lee Tiller Joke EX-93**  
 5-06 365D 2X 31,350M 4.9% 1,543F 3.3% 1,033P  
 All-American Jr. Two-Year-Old 2006  
 3rd Dam of Lot 32

**LOT 32 6 #2 HURRICANE X JORDAN IVF EMBRYOS**

**Breeder & Owner: SPRINGHILL**

**BIG PRAIRIE OH**

**330.473.9660 springhill.chris@gmail.com**

PA: -121M +0.14% +18F +0.06% +6P +165CM\$ +159NM\$  
 +0.5PTAT +1.1UDC +0.5FLC -0.7DPR +1.3PL +42CPI 2.92SCS

**COULÉE CREST LAVAS HURRICANE-ETV 840003214098780 551GU915 A2A2**

08/23 USDA GPTA -21M +0.14% +23F +0.06% +9P  
 -0.8DPR +1.0PL +204NM\$ 55NM%ile +211CM\$ 56% Rel  
 2.91SCS -0.90HCR 30% Rel -1.80CCR 32% Rel  
 0.90LIV 27% Rel 0.80GL 36% Rel 1.50EFC 27% Rel  
 AGA 08/23 PTAT +0.4 +1.3UDC +0.6FLC 53%Rel PTI +55

**SPRINGHILL MM JORDAN-ETV 840003132117652 A2A2**

08/23 USDA GPTA -221M +0.13% +12F +0.05% +2P  
 -0.6DPR +1.6PL +113NM\$ 63NM%ile +119CM\$ 67% Rel  
 2.93SCS-0.80HCR 34% Rel -1.00CCR 43% Rel  
 1.80LIV 39% Rel 0.30GL 44% Rel -3.60EFC 40% Rel  
 3 Rec YDev: +31M +43F +33P  
 4 App 08/23 PTAT +0.6 +0.8UDR +0.4FLC 70%Rel CPI +29  
 Appraisal: EX 91 @ 4-08 (EEVEE)  
 2-01 339D 2X 17350M 4.3% 740F 3.4% 592P 95  
 3-01 348D 2X 16140M 4.7% 751F 3.7% 598P 96  
 4-03 365D 2X 26480M 4.8% 1270F 3.7% 986P DHIA

**3D: DIX LEE TILLER JOKE USA000068001932**

Appraisal: 93 @ 5-08 (93/92)  
 5-06 365D 2X 31350M 4.9% 1543F 3.3% 1033P DHIA  
 Dam of Jester, Judgment, Jackpot, Lone Star, Jaguar  
 Dam of 13 Excellent Daughters  
 All-American Jr. 2-Year-Old 2006  
 Reserve All-American 5-Year-Old 2009

**4D: DIX LEE JIFFY JIPSY USA000003066162**

Appraisal: 90 @ 5-01 (88/90)  
 4-08 365D 2X 25080M 4.6% 1142F 3.4% 852P DHIA

**5D: DIX LEE SMOKEY BEAR JIGGER USA000003036554**

Appraisal: 84 @ 4-06  
 6-00 350D 2X 18990M 3.8% 728F 3.3% 618P DHIA

**6D: DIX LEE BRETTS BIONIC JINGLE USA000003004382**

Appraisal: 86 @ 5-06

**7D: DIX LEE FAYETTE JINGO USA000002984299**

Appraisal: 90 @ 3-11  
 4-02 305D 2X 21510M 4.6% 992F 3.6% 768P DHIR

- Six (6) #2 IVF embryos
- Sexed semen used for Females
- Resulting calves will be A2A2 by parentage
- Located at TransOva, MD
- Embryos must be in buyer's possession within 60 days of sale

**FOUR WINDS MAGICMAN-ET USA000000602265 72GU120 A1A2**

08/23 USDA GPTA -361M +0.03% -12F +0.02% -9P  
 -1.6DPR -1.2PL -237NM\$ 10NM%ile -234CM\$ 97% Rel  
 2.95SCS -0.80HCR 58% Rel -1.40CCR 90% Rel  
 2.60LIV 79% Rel -0.60GL 95% Rel -10.80EFC 80% Rel  
 AGA 08/23 PTAT -0.1 -0.9UDC -0.3FLC 98%Rel PTI -46

**SPRINGHILL DOUBLE JAZMIN-ET USA000068031518**

Appraisal: 92 @ 5-03 (91/91)  
 1-08 349D 2X 19490M 5.4% 1047F 3.5% 685P 101  
 2-08 365D 2X 21090M 6.5% 1373F 3.5% 732P DHIA  
 3-11 361D 2X 26290M 5.1% 1329F 4.0% 1047P 96  
 5-00 365D 2X 28270M 7.3% 2060F\*3.8% 1073P DHIA  
 1628D 102290M 6.2% 6334F 3.8% 3847P LIFE  
 Honorable Mention Junior All-American Yearling in Milk 2013  
 Honorable Mention Junior All-American Winter Calf 2012  
 Dtrs: SPRINGHILL LAREDO JOSLIN-ET 85 @ 6-11 (80/84)  
 3-01 365D 2X 26200M 5.3% 1395F 3.5% 917P DHIA  
 SPRINGHILL LAREDO JAZLYNN-ET 91 @ 6-00 (92/92)  
 Gold Star Dam - 2022  
 3-07 365D 2X 25770M 5.5% 1421F 3.6% 920P DHIA  
 SPRINGHILL GOTCHA JOLEE 88 @ 6-08 (90/78)  
 SPRINGHILL MM JOYRIDE-ETV 85 @ 2-04 (86/82)  
 SPRINGHILL LATIMER JUMANJI-ET 87 @ 5-03 (91/78)  
 4-07 305D 2X 18960M 5.7% 1081F 3.9% 730P 97  
 SPRINGHILL RO LEVI JAYLA-ETV 85 @ 2-10 (84/85)  
 1-11 365D 2X 21570M 4.3% 924F 3.5% 760P DHIA

**8D: DIX LEE RON JINGER USA000002919129**

Appraisal: 84 @ 3-07

**9D: ROMELLAS PATRICIAN JINGLE USA000002860737**

Appraisal: 85 @ 5-08  
 3-06 324D 2X 18480M 4.4% 804F 3.5% 640P DHIA





**Maplehurst Les Marzipan EX-92**  
Two-Time Canadian Grand Champion  
Granddam of Lot 33



**Gladheart Drone Meagan-ET**  
HM All-American Spring Calf 2022  
Maternal Sister to Dam of Lot 33

**LOT 33 3 #1 LOCKLEY-P X MAXINE-P IVF EMBRYOS**

Consignor: LEVESQUE ANDREW  
RUPERT VT

407.907.9796 sapphiregenetics@yahoo.com

**GOLDEN I LOCKLEY-ET-P 840003200644351 54GU508 A2A2**

08/23 USDA GPTA -279M +0.06% -2F +0.06% +1P  
+2.2DPR +2.5PL +140NM\$ 45NM%ile +149CM\$ 66% Rel  
2.81SCS 0.70HCR 29% Rel 2.00CCR 31% Rel  
1.80LIV 30% Rel 1.00GL 40% Rel -2.60EFC 27% Rel  
AGA 08/23 PTAT +0.4 +0.6UDC +0.8FLC 56%Rel PTI +38

**GLADHEART JD MAXINE-ET-P 840003227859536**

- Three (3) #1 IVF embryos
- Reverse sorted semen used for Females
- Resulting calves will be A2A2 by extended parentage
- Embryos made by Vytelle
- Located in Rupert, VT
- Embryos must be in buyer's possession within 60 days of sale

**SPRINGHILL JACK DANIELS-ETV-P 840003151591419 54GU506 A2A2**

08/23 USDA GPTA -347M +0.06% -5F +0.08% +2P  
-1.8DPR +0.2PL -88NM\$ 10NM%ile -79CM\$ 58% Rel  
2.92SCS -2.30HCR 30% Rel -3.00CCR 34% Rel  
-0.30LIV 29% Rel 0.00GL 42% Rel -4.20EFC 30% Rel  
AGA 08/23 PTAT +1.3 +1.6UDC +3.3FLC 57%Rel PTI +39

**MAPLEHURST LES MARZIPAN CAN000009594210 A2A2**

Appraisal: EX 92 @ 7-10 (EEEEEE)  
Grand Champion Canadian National Show 2015 & 2016  
2nd Lifetime Production Cow NGS-Harrisburg 2018  
Son at Masterpiece: GLADHEART MICHELANGELO-ET  
Dtrs: GLADHEART MARIETTA-ET 83 @ 2-05 (86/85)  
1-11 338D 2X 21910M 5.2% 1137F 3.4% 742P 96  
GLADHEART DRONE MEAGAN-ET  
Honorable Mention All-American Spring Calf 2022

**3D: MAPLEHURST TURLEYS MARISSA CAN000007433708**

Appraisal: EX-90 @ 8-09 CAN  
6-01 365D 2X 21233M 4.7% 992F 3.5% 743P  
Dtr: MAPLEHURST LES MAYA 91 @ 6-07 (94/83)  
3-06 304D 3X 19090M 4.8% 925F 3.3% 636P DHIA  
Honorable Mention All-American Senior Three-Year-Old 2015

**4D: COMFORT FARMS TRADITION MARY CAN000010034087**

Appraisal: VG-85 @ 2-11 CAN

**5D: COMFORT FARMS NORMA JEAN CAN10031892**

Appraisal: GP-80 @ 2-05 CAN

**6D: COMFORT FARMS NERNE CAN196975**

Appraisal: VG-86 @ 2-08 CAN

**7D: COMFORT FARMS NELDA CAN192364**

Appraisal: GP-84 @ 2-10 CAN



**Gladheart JD Maxine-ET-P**

Junior Champion, Addison, Vermont County Fair &  
Field Days 2022  
Dam of Lot 33



**Craig Moor Pilot Belynda VG-85**  
 3-01 305D 3X 18,590M 4.6% 847F 3.2% 601P Proj.  
 2020 New York Scholarship Calf  
 Dam of Lot 34

**LOT 34 3 #1 GOLDMINE X BELYNDA IVF EMBRYOS**

**Breeder & Owner: CHUHTA ALLISON  
 CAMBRIDGE NY**

**518.677.2628 steven.m.chuhta@zoetis.com**

PA: -327M +0.11% +4F +0.04% -5P -11CM\$ -14NM\$  
 +0.9PTAT +1.2UDC +1.2FLC -0.6DPR +0.6PL +21CPI 3.03SCS

**TERPHILL JAMES DEAN GOLDMINE-ETV 840003214098874 6GU126 A2A2**

08/23 USDA GPTA -204M +0.10% +8F +0.08% +7P  
 -1.3DPR +0.7PL +24NM\$ 35NM%ile +30CM\$ 52% Rel  
 3.09SCS -1.90HCR 28% Rel -2.10CCR 30% Rel  
 0.50LIV 27% Rel -0.90GL 31% Rel -5.70EFC 27% Rel  
 AGA 08/23 PTAT +1.2 +1.7UDC +2.1FLC 50%Rel PTI +50

**CRAIG MOOR PILOT BELYNDA USA000068031880**

08/23 USDA PTA -450M +0.12% -1F -0.01% -16P  
 +0.2DPR +0.5PL -51NM\$ 25NM%ile -52CM\$ 44% Rel  
 2.97SCS 0.10HCR 18% Rel 0.10CCR 24% Rel  
 0.40LIV 16% Rel 1.40GL 31% Rel 1.20EFC 18% Rel  
 2 Rec YDev: -2161M -47F -81P  
 2 App 08/23 PTAT +0.5 +0.7UDR +0.3FLC 43%Rel CPI -8  
 Appraisal: VG 85 @ 3-07 (VV+++)  
 3-01 305D 3X 18590M 4.6% 847F 3.2% 601P Proj. Act.  
 2020 New York Scholarship Calf

- Three (3) #1 IVF embryos
- Sexed semen used for females
- Resulting calves will be A2A2 by extended parentage
- Embryos located at Vytelle, NY
- Embryos must be in buyer's possession within 60 days of sale

**LINDRIAN GRUMPY PILOT-ET CAN000011632409 200GU307 A2A2**

08/23 USDA GPTA -413M +0.12% +1F +0.06% -3P  
 +0.1DPR +1.2PL +84NM\$ 40NM%ile +96CM\$ 88% Rel  
 2.69SCS -0.60HCR 49% Rel 0.80CCR 67% Rel  
 1.50LIV 45% Rel 2.50GL 91% Rel -0.40EFC 49% Rel  
 AGA 08/23 PTAT +0.6 +1.6UDC +0.9FLC 84%Rel PTI +30

**CRAIG MOOR COPPER BIANCA USA000068031872 A2A2**

Appraisal: G 77 @ 2-09 (G+GFG)  
 2-00 286D 2X 11160M 4.9% 542F 3.1% 346P 92

**3D: CRAIG MOOR CAMERO BELL USA000068031856**

Appraisal: 82 @ 3-09 (78/80)

**4D: CRAIG MOOR SMOKEYS BETTY LOU USA000003078910**

Appraisal: 83 @ 4-09 (78/82)  
 4-02 277D 2X 19960M 5.0% 1000F 3.4% 669P 94  
 2183D 124120M 4.8% 5948F 3.4% 4190P LIFE

**5D: CRAIG MOOR HOTSHOTS BONITA USA000003068433**

Appraisal: 90 @ 4-08 (88/90)  
 4-00 305D 2X 19140M 4.5% 867F 3.4% 652P 94



**Jens Gold Coin Breezy Charise VG-85**  
 2-00 344D 2X 23,688M 3.6% 856F 3.0% 701P  
 Res. Grand Champion WI State Fair Jr. Show 2021  
 Dam of Lots x & x

**LOT 35 3 #1 TORPEDO X CHARISE IVF EMBRYOS**

**Breeder & Owner: NAFZGER CYNTANAH  
 MINERAL POINT WI**

**608.575.4259 nafzgercd24@yahoo.com**

PA: +203M -0.02% +5F -0.01% +6P +95CM\$ +95NM\$  
 +1.0PTAT +0.9UDC +1.8FLC +0.3DPR +0.9PL +46CPI 3.01SCS

- Three (3) #1 IVF embryos
- Sexed semen used for females
- Embryos located in Mineral Point, WI
- Resulting calves will be A2A2 by parentage
- Embryos must be in buyer's possession within 60 days of sale

**LANG HAVEN LONDON TORPEDO 840003233414503 54GU520 A2A2**

08/23 USDA GPTA +222M +0.02% +13F +0.04% +14P  
 -0.2DPR -0.2PL +71NM\$ 40NM%ile +75CM\$ 58% Rel  
 3.01SCS -0.10HCR 29% Rel -0.40CCR 35% Rel  
 -0.60LIV 29% Rel 1.60GL 43% Rel -1.70EFC 29% Rel  
 AGA 08/23 PTAT +1.8 +2.1UDC +4.2FLC 58%Rel PTI +95

**JENS GOLD COIN BREEZY CHARISE 840003203205087 A2A2**

PA: +184M -0.05% -1F -0.05% -3P +114CM\$ +118NM\$  
 +0.1PTAT -0.3UDC -0.7FLC +0.8DPR +2.0PL -4CPI 3.00SCS  
 3 App 08/23 PTAT +0.1 -0.3UDR -0.7FLC 36%Rel  
 Appraisal: VG 85 @ 3-11 (VV+V+)  
 2-00 344D 2X 23688M 3.6% 856F 3.0% 701P DHIA  
 3-02 305D 2X 19825M 3.8% 753F 3.2% 633P DHIA  
 Reserve Grand Champion Wisconsin State Fair Jr. Show 2021

**JENS GOLD COPPER COIN 840003134140210 6GU100 A2A2**

08/23 USDA GPTA +70M +0.07% +15F -0.04% -5P  
 +1.3DPR +4.3PL +286NM\$ 70NM%ile +286CM\$ 86% Rel  
 2.80SCS 3.00HCR 48% Rel 2.30CCR 54% Rel  
 0.80LIV 38% Rel -1.00GL 93% Rel 5.80EFC 44% Rel  
 AGA 08/23 PTAT +0.5 +1.2UDC +0.9FLC 83%Rel PTI +52

**JENS GOLD WINSLOW BREEZY CHARI 840003134140251 A1A2**

Appraisal: G 78 @ 2-05 (+VG+F)

**3D: JENS GOLD NAVAJO BREEZY CHERYL 840003014321870 A2A2**

Appraisal: 81 @ 2-09 (80/80)

**LOT 36 3 #1 TORPEDO X CHARISE IVF EMBRYOS**

**Breeder & Owner: NAFZGER CYNTANAH  
 MINERAL POINT WI**

**608.575.4259 nafzgercd24@yahoo.com**

PA: +203M -0.02% +5F -0.01% +6P +95CM\$ +95NM\$  
 +1.0PTAT +0.9UDC +1.8FLC +0.3DPR +0.9PL +46CPI 3.01SCS

- Three (3) #1 IVF embryos
- Sexed semen used for females
- Embryos located in Mineral Point, WI
- Resulting calves will be A2A2 by parentage
- Embryos must be in buyer's possession within 60 days of sale

**LANG HAVEN LONDON TORPEDO 840003233414503 54GU520 A2A2**

08/23 USDA GPTA +222M +0.02% +13F +0.04% +14P  
 -0.2DPR -0.2PL +71NM\$ 40NM%ile +75CM\$ 58% Rel  
 3.01SCS -0.10HCR 29% Rel -0.40CCR 35% Rel  
 -0.60LIV 29% Rel 1.60GL 43% Rel -1.70EFC 29% Rel  
 AGA 08/23 PTAT +1.8 +2.1UDC +4.2FLC 58%Rel PTI +95

**JENS GOLD COIN BREEZY CHARISE 840003203205087 A2A2**

PA: +184M -0.05% -1F -0.05% -3P +114CM\$ +118NM\$  
 +0.1PTAT -0.3UDC -0.7FLC +0.8DPR +2.0PL -4CPI 3.00SCS  
 3 App 08/23 PTAT +0.1 -0.3UDR -0.7FLC 36%Rel  
 Appraisal: VG 85 @ 3-11 (VV+V+)  
 2-00 344D 2X 23688M 3.6% 856F 3.0% 701P DHIA  
 3-02 305D 2X 19825M 3.8% 753F 3.2% 633P DHIA  
 Reserve Grand Champion Wisconsin State Fair Jr. Show 2021

**JENS GOLD COPPER COIN 840003134140210 6GU100 A2A2**

08/23 USDA GPTA +70M +0.07% +15F -0.04% -5P  
 +1.3DPR +4.3PL +286NM\$ 70NM%ile +286CM\$ 86% Rel  
 2.80SCS 3.00HCR 48% Rel 2.30CCR 54% Rel  
 0.80LIV 38% Rel -1.00GL 93% Rel 5.80EFC 44% Rel  
 AGA 08/23 PTAT +0.5 +1.2UDC +0.9FLC 83%Rel PTI +52

**JENS GOLD WINSLOW BREEZY CHARI 840003134140251 A1A2**

Appraisal: G 78 @ 2-05 (+VG+F)

**3D: JENS GOLD NAVAJO BREEZY CHERYL 840003014321870 A2A2**

Appraisal: 81 @ 2-09 (80/80)

# LOT 37 3 #1 SPARTA-P X PIMENTO IVF EMBRYOS

Breeder & Owner: PRAIRIE CREAM & VALLEY GEM  
CUMBERLAND WI

715.419.0745 vgguernseys@gmail.com

PA: +596M -0.07% +16F -0.03% +16P +122CM\$ +121NM\$  
+1.7PTAT +1.9UDC +4.3FLC -1.3DPR +0.7PL +91CPI 2.89SCS

## KADENCE JAVA SPARTA-P USA000097013057 6GU130 A2A2

08/23 USDA GPTA +643M -0.09% +14F +0.03% +27P  
-2.3DPR -0.3PL +78NM\$ 40NM%ile +85CM\$ 50% Rel  
2.85SCS -1.60HCR 26% Rel -3.20CCR 27% Rel  
-1.70LIV 25% Rel 1.20GL 30% Rel -0.30EFC 26% Rel  
AGA 08/23 PTAT +1.5 +1.6UDC +4.0FLC 51%Rel PTI +91

## SUNNY MEAD COPPER PIMENTO USA000097004924 A2A2

08/23 USDA GPTA +548M -0.04% +18F -0.08% +4P  
-0.3DPR +1.7PL +164NM\$ 75NM%ile +158CM\$ 66% Rel  
2.93SCS 1.10HCR 35% Rel -0.40CCR 42% Rel  
-1.10LIV 35% Rel 0.30GL 43% Rel 4.10EFC 36% Rel  
3 Rec YDev: +916M +30F +5P  
5 App 08/23 PTAT +1.9 +2.2UDR +4.6FLC 71%Rel CPI +91  
Appraisal: EX 93 @ 5-05 (EEEEEE)  
2-03 327D 2X 15270M 4.2% 648F 2.9% 447P 97  
4-07 305D 2X 14510M 4.8% 698F 3.2% 470P 97  
#35(T) CPI Cow August 2023  
#9(T) PTAT Cow August 2023

- Three (3) #1 IVF embryos
- Sexed semen used for Females
- Resulting calves will be A2A2 by parentage
- Resulting calves would rank in top 5 PTAT Heifers & Top 40 CPI Heifers!
- Located at Scenic Hill Embryo Transfer, WI
- Embryos must be in buyer's possession within 60 days of sale

## JENS GOLD AARON COPPER-ET USA000068027038 14GU318 A2A2

08/23 USDA GPTA +105M +0.03% +10F -0.04% -3P  
-0.9DPR +1.2PL +140NM\$ 45NM%ile +139CM\$ 98% Rel  
2.86SCS 2.40HCR 74% Rel -0.80CCR 90% Rel  
-2.10LIV 70% Rel 0.80GL 99% Rel 5.90EFC 77% Rel  
AGA 08/23 PTAT +0.9 +1.4UDC +1.4FLC 98%Rel PTI +28

## SUNNY MEAD BUCKYS PENNY-TW USA000078000487

Appraisal: VG 86 @ 6-11 (VVVVV)  
2-03 324D 2X 11810M 4.7% 559F 3.2% 376P 97  
3-03 330D 2X 16670M 5.1% 855F 3.3% 557P 97  
4-04 309D 2X 18100M 4.7% 851F 3.2% 584P 98  
5-04 307D 2X 16960M 4.6% 785F 3.3% 555P 98  
6-04 342D 2X 20300M 4.6% 936F 3.3% 667P 98  
7-05 265D 2X 13230M 4.5% 591F 3.4% 448P 95

## 3D: SUNNY MEAD LAREDO PRISM-TW USA000068045438

Appraisal: 87 @ 4-04 (86/83)  
3-10 329D 2X 18350M 4.4% 804F 3.1% 564P 98  
SUNNY MEAD BUCKYS PESO-TW 90 @ 8-00 (89/88)  
6-02 305D 2X 21060M 4.6% 966F 3.0% 636P DHIA



**Rocky Hill Prada Holiday EX-94 3E**  
 114,210M 4.3% 4,932F 3.2% 3,668P Lifetime  
 HM All-American Lifetime Production Cow 2022  
 Dam of Lot 75



**Rocky Hill Java Ho Ho Ho-ETV**  
 Maternal Sister to Lot 75

**LOT 75 4 #1 MAS X HOLIDAY IVF EMBRYOS**

**Breeder & Owner: MCCARTY ELIJAH AND HENRY**  
**HUGHESVILLE PA**  
**813.523.1168 rockyhill91@yahoo.com**

- Four (4) #1 IVF embryos
- Embryos to be by a Mutually Agreeable Sire
- Embryos to be made by January 1, 2024

**MUTUALLY AGREEABLE SIRE**

**ROCKY HILL PRADA HOLIDAY USA000078000986 A1A2**

08/23 USDA GPTA -478M +0.06% -11F +0.00% -16P  
 -1.2DPR +0.7PL -165NM\$ 8NM%ile -165CM\$ 67% Rel  
 2.98SCS -1.90HCR 32% Rel -2.60CCR 42% Rel  
 -0.40LIV 34% Rel 1.80GL 42% Rel -1.40EFC 34% Rel  
 5 Rec YDev: -1355M -28F -51P  
 4 App 08/23 PTAT +1.3 +0.8UDR +3.1FLC 69%Rel CPI +0  
 Appraisal: EX 94 @ 9-08 (EEVEE) 3E  
 2-02 313D 2X 15320M 4.3% 664F 3.3% 510P 96  
 3-02 287D 2X 15930M 4.4% 700F 3.3% 523P 97  
 4-02 278D 2X 18220M 4.0% 729F 3.2% 582P 95  
 5-02 297D 2X 20570M 4.2% 855F 3.2% 657P 95  
 6-02 325D 2X 19330M 4.1% 795F 3.1% 602P 96  
 7-05 365D 2X 21040M 4.7% 990F 3.1% 657P DHIA  
 1990D 114210M 4.3% 4932F 3.2% 3668P LIFE

*Honorable Mention All-American Lifetime Production Cow 2021*  
*1st Lifetime Production Cow NGS-Harrisburg 2021*  
*2nd Senior Two-Year-Old NGS-Harrisburg 2016*  
*2nd Lifetime Production Cow NGS-Harrisburg 2023*  
 Dtrs: ROCKY HILL NOVAK HOORAY  
*Nominated All-American Summer Yearling 2022*  
 ROCKY HILL KOJACK HIT ON ME-ETV  
*Nominated Junior All-American Spring Yearling 2022*  
 ROCKY HILL JAVA HO HO HO-ETV  
*1st Winter Calf NJS-Harrisburg 2023*  
*1st Winter Calf Guernsey Gold Showcase 2023*

**INDIAN ACRES PRADA-ET USA000068026022 200GU305 A1A2**

08/23 USDA GPTA -106M -0.08% -18F -0.03% -8P  
 -2.1DPR +2.0PL -65NM\$ 10NM%ile -65CM\$ 95% Rel  
 2.85SCS -0.80HCR 62% Rel -3.80CCR 84% Rel  
 -0.50LIV 67% Rel 1.90GL 97% Rel 0.60EFC 69% Rel  
 AGA 08/23 PTAT +0.6 +1.0UDC +3.5FLC 95%Rel PTI +7

**ROCKY HILL DYNAMIC HAVEN USA000068045820**

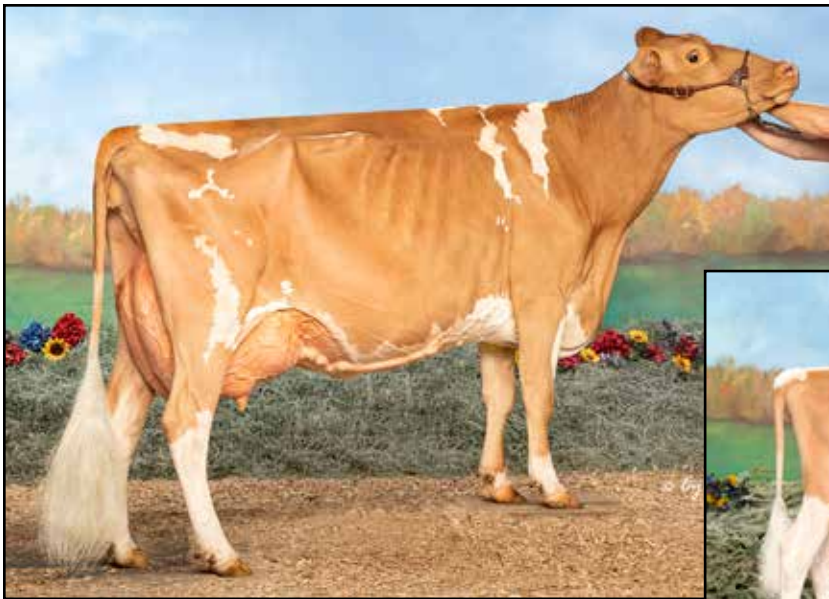
Appraisal: 90 @ 5-10 (88/90)  
 2-03 303D 2X 13330M 4.5% 601F 3.4% 448P 94  
 3-03 365D 2X 18650M 4.7% 879F 3.5% 662P DHIA  
 4-07 301D 2X 20180M 4.5% 917F 3.4% 694P 97  
 5-07 362D 2X 17920M 4.5% 804F 3.6% 649P 98  
*1st Senior Three-Year-Old New York Spring Show 2015*  
 ROCKY HILL PILOT HOLLISTER 87 @ 5-00 (87/82)  
 4-10 365D 2X 23230M 4.6% 1066F 3.3% 771P DHIA

**3D: ROCKY HILL MISSION HARLEY USA000068021593**

Appraisal: 88 @ 4-09 (87/90)

**4D: NEBZ NOLL HOPE HOLLY-TW USA000068010288**

Appraisal: 86 @ 4-01 (84/90)  
 3-02 355D 2X 19190M 4.3% 816F 3.3% 625P DHIA  
*Reserve Junior All-American Winter Calf 2006*  
*Reserve Junior All-American Winter Yearling 2007*



**Rocky Hill Gamble Luscious EX-94 2E**  
 4-00 365D 2X 20,980M 3.3% 689F 2.7% 566P  
 Nom. All-American Five-Year-Old 2022  
 Dam of Lot 76



**Rocky Hill Copper Liliann EX-91**  
 Maternal Sister to Dam of Lot 76

**LOT 76 4 #1 MAS X LUSCIOUS IVF EMBRYOS**

**Breeder & Owner: MCCARTY ELIJAH AND HENRY**  
**HUGHESVILLE PA**  
 813.523.1168 rockyhill91@yahoo.com

- Four (4) #1 IVF embryos
- Embryos to be by a Mutually Agreeable Sire
- Embryos to be made by January 1, 2024

**MUTUALLY AGREEABLE SIRE**

**ROCKY HILL GAMBLE LUSCIOUS USA000097003732 A2A2**

08/23 USDA GPTA +693M -0.26% -16F -0.14% -3P  
 -1.5DPR +0.1PL -128NM\$ 12NM%ile -141CM\$ 67% Rel  
 2.98SCS -1.60HCR 29% Rel -1.90CCR 43% Rel  
 -0.90LIV 31% Rel 0.10GL 41% Rel -2.40EFC 32% Rel  
 3 Rec YDev: +999M -70F -29P  
 6 App 08/23 PTAT +1.2 +0.9UDR +1.6FLC 58%Rel CPI -2  
 Appraisal: EX 94 @ 6-05 (EEVEE) 2E  
 2-07 365D 2X 20420M 3.3% 679F 2.8% 569P DHIA  
 4-00 365D 2X 20980M 3.3% 689F 2.7% 566P DHIA  
 5-03 305D 2X 20700M 3.2% 670F 2.8% 573P 98  
*Nominated All-American Five-Year-Old 2022*

**LAVON FARMS REGAL GAMBLE-ET USA000068041944 A2A2**

08/23 USDA PTA -653M -0.04% -37F -0.03% -26P  
 +1.9DPR +2.1PL -182NM\$ 10NM%ile -185CM\$ 76% Rel  
 2.97SCS -0.30HCR 16% Rel 2.00CCR 47% Rel  
 2.40LIV 30% Rel -0.20GL 60% Rel -6.20EFC 31% Rel  
 AGA 08/23 PTAT +0.9 +0.9UDC +0.6FLC 73%Rel PTI -37

**COULEE CREST AP LILITH USA000078002520 A2A2**

Appraisal: 88 @ 3-04 (88/86)  
 2-00 320D 2X 21250M 3.5% 750F 3.0% 632P 96  
 3-00 275D 2X 18350M 3.0% 558F 2.9% 531P 96  
 4-00 359D 2X 28040M 3.3% 912F 2.7% 762P 97  
 Dtr: ROCKY HILL COPPER LILIANN 91 @ 6-08 (91/88)  
*1st Junior Three-Year-Old NC State Fair 2019*

**3D: COULEE CREST NICK LORILYN USA000068023988 A1A2**

Appraisal: 91 @ 5-00 (90/91)  
 3-05 365D 3X 42440M\*5.3% 2254F\*3.1% 1298P\* DHIA  
 1168D 107900M 5.3% 5707F 3.3% 3533P LIFE

*Dam of Legend & Lakoda*

Dtrs: COULEE CREST AP LORILANE-ET 90 @ 3-11 (90/86)  
 COULEE CREST AP LORILEE 90 @ 4-00 (91/90)  
 2-10 365D 3X 41180M\*4.7% 1945F\*3.5% 1425P\* DHIA  
 COULEE CREST TOP NOTCH LEXANN-ETV 91 @ 5-11 (92/87)  
 4-01 365D 2X 26720M 3.8% 1013F 3.3% 886P DHIA

**4D: FLAMBEAU MANOR DECISION LORI-ET USA000068012709 A2A2**

Appraisal: 90 @ 8-02 (88/90) Gold Star Dam - 2013  
 3-09 365D 3X 44250M\*5.9% 2600F\*3.0% 1313P\* 94  
 2328D 184340M 5.4% 10017F 3.3% 6002P LIFE

**5D: FLAMBEAU MANOR ENHANCER LANA USA000003043629**

Appraisal: 92 @ 7-11 (90/90) Gold Star Dam - 2001  
 5-10 365D 2X 30271M 5.4% 1645F 3.2% 968P DHIA  
 1980D 130421M 4.9% 6454F 3.3% 4293P LIFE

**6D: FLAMBEAU MANOR VOL LAURA USA000003022186**

Appraisal: 90 @ 4-07  
 4-02 305D 2X 18260M 4.2% 765F 3.7% 680P DHIA

**7D: FLAMBEAU MANOR LESLIE USA000002947026**

Appraisal: 90 @ 3-08 Gold Star Dam - 1992



**Coulee Crest Nick Lorilyn EX-91**  
 107,900M 5.3% 5,707F 3.3% 3,533P Lifetime  
 Dam of Legend & Lakoda  
 3rd Dam of Lot 76

# SEMEN LOTS

S38	GUERNSEY GOLD SIRES <b>SEXED</b> PACKAGE OF 10 UNITS: 2 UNITS 514GU116 COULEE CREST RICHARD CHECKMATE 3 UNITS 514GU120 LANG HAVEN NETWORK KAPTION 1 UNIT 514GU124 SPRINGHILL JUNGLE 4 UNITS 514GU128 DAIRYMAN THEO PELOTON Consigned by Guernsey Gold Sires, Columbus, OH 614.406.8446	A2A2 <b>SEXED</b> A2A2 <b>SEXED</b> A2A2 <b>SEXED</b> A2A2 <b>SEXED</b> Located in Plain City, OH
S39	PACKAGE OF 6 UNITS: 5 UNITS 7GU468 FLAMBEAU MANOR LADYS MAN 1 UNIT OF 576GU900 FLAMBEAU MANOR BOMAN Consigned by Bryce Birk, Big Prairie, OH 574.520.2480	A2A2 A2A2 <b>SEXED</b> Located in Middlebury, IN
S40	PACKAGE OF 11 UNITS: 4 UNITS 7GU452 SNIDERS GRUMPY ASSAULT 7 UNITS 76GU804 SNIDERS LORAL ARCHIE Consigned by Bryce Birk, Big Prairie, OH 574.520.2480	A2A2 Located in Middlebury, IN
S41	5 UNITS OF 694GU959 HI GUERN VIEW LEVI DRONE Consigned by Lars Sivesind, Waukon, IA 563.794.0275	A2A2 <b>SEXED</b> Located in Waukon, IA
S42	3 UNITS OF 694GU959 HI GUERN VIEW LEVI DRONE Consigned by Jesse Dorn, New Glarus, WI 608.214.4838	A2A2 <b>SEXED</b> Located in New Glarus, WI
S43	8 UNITS OF 507GU473 COULEE CREST NOVAK LAMBEAU-ET Consigned by Hoard's Dairyman Farm, Fort Atkinson, WI 920.728.4822	A2A2 <b>SEXED</b> Located in Fort Atkinson, WI
S44	4 UNITS OF 507GU473 COULEE CREST NOVAK LAMBEAU-ET Consigned by Hoard's Dairyman Farm, Fort Atkinson, WI 920.728.4822	A2A2 <b>SEXED</b> Located in Fort Atkinson, WI
S45	3 UNITS OF 507GU473 COULEE CREST NOVAK LAMBEAU-ET Consigned by Lars Sivesind, Waukon, IA 563.794.0275	A2A2 <b>SEXED</b> Located in Waukon, IA
S46	10 UNITS OF 551GU915 COULEE CREST LAVAS HURRICANE-ETV Consigned by Cyndi Nafzger of R-Dream Farm - Mineral Point, WI 608-575-4259	A2A2 <b>SEXED</b> Located in Mineral Point, WI
S47	4 UNITS OF 54GU481 GOLDEN I LONDON Consigned by Idle Neer Sires, Letts, IA 319.572.7070	A2A2 Located in Adel, IA
S48	3 UNITS OF 54GU486 SPRINGHILL ALTITUDE-ET-P Consigned by Idle Neer Sires, Letts, IA 319.572.7070	A2A2 <b>POLLED</b> Located in the GMS Tank, Columbus, OH
S49	7 UNITS OF 54GU486 SPRINGHILL ALTITUDE-ET-P Consigned by Idle Neer Sires, Letts, IA 319.572.7070	A2A2 <b>POLLED</b> Located in Adel, IA
S50	5 UNITS OF 54GU499 IDLE GOLD A HERALD-P Consigned by Neil & Janice Jensen, Comstock, WI 715.554.2833	A2A2 <b>POLLED</b> Located in the GMS Tank, Columbus, OH
S51	7 UNITS OF 54GU463 VALLEVIEW POLLED FUTURE-P Consigned by Idle Neer Sires, Letts, IA 319.572.7070	<b>HOMOZYGOUS POLLED</b> Located in Adel, IA
S52	10 UNITS OF 54GU487 SPRINGHILL JAY Z-TW-P Consigned by Idle Neer Sires, Letts, IA 319.572.7070	A2A2 <b>POLLED</b> Located in Adel, IA
S53	10 UNITS OF 54GU488 SPRINGHILL JETWAY-ET-P Consigned by Idle Neer Sires, Letts, IA 319.572.7070	A2A2 <b>POLLED</b> Located in Adel, IA
S54	10 UNITS OF 54GU489 WHIRLWIND ACRES GARY EXPO Consigned by Idle Neer Sires, Letts, IA 319.572.7070	A2A2 Located in Adel, IA
S55	10 UNITS OF 120GU4081 SPRINGHILL J SNOWSTORM Consigned by Springhill, Big Prairie, OH 330.473.9660	A2A2 <b>+82GPTI</b> Located in the GMS Tank, Columbus, OH
S56	10 UNITS OF 120GU4081 SPRINGHILL J SNOWSTORM Consigned by Springhill, Big Prairie, OH 330.473.9660	A2A2 <b>+82GPTI</b> Located in the GMS Tank, Columbus, OH
S57	2 UNITS OF 14GU208 WAMPANOAG FAYETTE SMOKEY Consigned by Bryce Birk, Big Prairie, OH 574.520.2480	A2A2 Located in Middlebury, IN
S58	2 UNITS OF VILLA CREST OHD ANSWER 68041808 Consigned by Levi Plocher, Salem, OH 330.446.0411	Located in the GMS Tank, Columbus, OH

# SEMEN LOTS

S59	3 UNITS OF 31GU618 INDIAN ACRES AMERICAN PIE Consigned by Levi Plocher, Salem, OH 330.446.0411	A2A2 Located in the GMS Tank, Columbus, OH
S60	3 UNITS OF 7GU302 ROZELYN PAT MAR P GOLIATH-ET Consigned by Levi Plocher, Salem, OH 330.446.0411	Located in the GMS Tank, Columbus, OH
S61	2 UNITS OF 14GU318 JENS GOLD AARON COPPER-ET Consigned by Levi Plocher, Salem, OH 330.446.0411	A2A2 Located in the GMS Tank, Columbus, OH
S62	1 UNIT OF 7GU402 EDGEWATER MEADOWS YOGIBEAR-ET Consigned by Knapp Genetics, Epworth, IA 563.590.5369	A2A2 Located in Epworth, IA
S63	5 UNITS OF 54GU468 KNAPPS APIE TOP NOTCH Consigned by Knapp Genetics, Epworth, IA 563.590.5369	Located in Epworth, IA
S64	5 UNITS OF 91GU5743 KNAPPS RIPLEY REGIS TAMPA-ET Consigned by Knapp Genetics, Epworth, IA 563.590.5369	A2A2 Located in Epworth, IA
S65	5 UNITS OF KNAPPS REGIS TY-ET 68039030 Consigned by Knapp Genetics, Epworth, IA 563.590.5369	Located in Epworth, IA
S66	5 UNITS OF 76GU809 KNAPPS ADACKA TITAN-ET Consigned by Knapp Genetics, Epworth, IA 563.590.5369	A2A2 Located in Epworth, IA
S67	5 UNITS OF 1GU415 COULEE CREST LUXURY SPIDER-ET Consigned by Knapp Genetics, Epworth, IA 563.590.5369	Located in Epworth, IA
S68	4 UNITS OF WARWICK MANOR BO AXEL-ET 97001046 Consigned by Knapp Genetics, Epworth, IA 563.590.5369	A2A2 Located in Epworth, IA
S69	6 UNITS OF 7GU405 GOLDEN J RONALD GRUMPY Consigned by Knapp Genetics, Epworth, IA 563.590.5369	A2A2 Located in Epworth, IA
S70	1 UNIT OF 76GU807 SNIDERS GOLDUST ACHIEVE-ET Consigned by Knapp Genetics, Epworth, IA 563.590.5369	A2A2 Located in Epworth, IA
S71	5 UNITS OF 7GU417 SNIDERS TILLER ALTANIC Consigned by Guernsey Marketing Service, Columbus, OH 614.339.5390	A2A2 Located in the GMS Tank, Columbus, OH
S72	5 UNITS OF 21GU247 DUTCH MILL TELESTARS FAYETTE Consigned by Guernsey Marketing Service, Columbus, OH 614.339.5390	Located in the GMS Tank, Columbus, OH
S73	10 UNITS OF 76GU805 SNIDERS DEEMAND ADACKA-ET Consigned by Guernsey Marketing Service, Columbus, OH 614.339.5390	Located in the GMS Tank, Columbus, OH
S74	10 UNITS OF INDIAN ACRES PIES PATRIOT-ET 68029883 Consigned by Guernsey Marketing Service, Columbus, OH 614.339.5390	Located in the GMS Tank, Columbus, OH



# Registering Embryo Calves with the American Guernsey Association

## **New Guernsey Owners**

- Visit [www.usguernsey.com](http://www.usguernsey.com) to learn about membership with the American Guernsey Association. Membership is not required to register calves, but will reduce your registration fees!
- Calf registration can be done online at [www.usguernsey.com](http://www.usguernsey.com) or using paper forms - contact the office if you desire paper forms.
- It is recommended to contact AGA prior to registration to obtain an owner number.

## **Requirements of registration**

- All donor dams **MUST** be DNA tested. For embryos made after May 2017, donor dams must have been genomic tested. Be sure to ask the consignor about the dam's DNA status before submitting registrations.
- As with any calf registration, you must have the complete registration number and name of both the sire and dam of the calf.
- You must specify who the owner is of each calf registered.
- The prefix of the breeder of the calf is required to start its registered name.
- The AGA does not require any veterinary paperwork to be submitted before registration; although AGA reserves the right to request paperwork if deemed necessary.

## **Foreign Registration**

Each country association has its own rules for embryo registration. Buyers should check with their respective association to see what paperwork and DNA requirements need met. Foreign buyers without a home association could be eligible for AGA registration. Contact the office directly to inquire. AGA will not register calves for buyers with a Guernsey registration association within their country.

