



Celebrate Summer Sale

Friday, June 19, 2020

11:00 AM EDT

**Hosted by:
Swisslane Farms
Alto, MI**



Friday,
June 19, 2020
11:00AM EDT

Sale Hosted by **Swisslane Farms, Alto, Michigan**
*Auction will take place at the Dairy Discovery event space.



*View/bid online in Real Time
at www.cowbuyer.com*

*Bidders must pre-register & be pre-approved.

*Contact Aaron Tompkins if you need assistance at 336-363-4639

Sales Staff

Jason Lamoreaux...616-822-0101
-Auctioneer

Daniel Brandt..... 717-821-1238
-Pedigrees

Mike Berby..... 219-608-1339

Eric Westendorp... 269-838-9975

Tom Oesch..... 616-889-5018

Chad Griffith..... 513-543-2315

Terms of Sale: Cash or good check sale day. Cattle purchased by an agent or a member of the sale staff on buyers behalf should be settled for by priority mail payment or money wire. For all other terms and conditions refer to the Holstein Association Terms and Conditions page in this catalog.

Directions: (GPS address: 12877 84th SE, Alto, MI 49302) I-96 to Exit 52 South to 84th Street, continue approx. 1 mile to Farm. Sale on south side of the road. Watch for sale signage.

Sale Managed By:

Sale Host:

LAMOREAUX
AUCTION & REAL ESTATE
Jason Lamoreaux
11628 Old Belding Rd, Belding, MI 48809
616-822-0101



Swisslane Farms
12877 84th SE
Alto, MI 49302
616-889-5018

~Celebrate Summer Sale~



BGP Modesty Annisa

2-00 309 26250 5.4 1301 3.4 841 RIP

(2nd Dam of Lot A)

LOT A Embryos

*Selling 4-#1 & 1-#2 female IVF embryos sired by Paco

PA = +2912GTPI +791NMS

ST Gen Helix Paco-ET

3132352801 4/20 PTA +2943GTPI
+700M +.30% +114F +.10% +51P
+800NMS +3.9PL -.4DPR 2.79SCS
+1.14T +1.03UDC +.95FLC 79%R
Helix X EX-91 Rubicon

BGP SLF Solution 18550-ET

3205756427 4/20 PTA +2880GTPI
+1334M +.18% +103F +.00% +42P
+781NMS +5.9PL 2.74SCS +202FE
+1.30T +1.40UDC +.81FLC
Sire: Fustead S-S-I Solution-ET

2nd Dam: (Pictured above)

BGP Modesty Annisa

GP-81 GG+++

2-00 309 26250 5.4 1301 3.4 841 RIP

*Daus. sold for up to \$90,000

Mat. bro.: 734HO91 Yolo

3rd Dam: (Pictured w/ Lot 24)

View-Home Mrdian Iowa-ET

VG-86 VVV+V DOM

2-02 365 35670 3.8 1342 3.3 1166

4th Dam: (Pictured w/ Lot 35)

Pine-Tree 2149Robst 4846-ET

VG-87 EEV+V DOM

2-04 365 32001 4.7 1520 3.4 1097

*8 sons in active AI including Monterey

5th Dam: Pine-Tree Zenith Sheen

VG-87 VV+VV DOM

1-11 365 27883 3.9 1092 3.0 855

6th Dam: Pine-Tree Martha Sheen-ET

VG-86 VV+VV DOM

1-11 365 31210 4.2 1305 3.1 968

7th Dam: Pine-Tree Missy Martha-ET

VG-86 VVV+V DOM

2-02 365 34730 3.6 1266 3.1 1070

8th Dam: Wesswood-HC Rudy Missy-ET

EX-92,3E EEEEE GMD-DOM

4-11 365 40880 4.1 1665 3.4 1385

Lifetime 119610 4.1 4885 3.4 4031

*Global Cow of the Year 2014

9th Dam: Wesswood Elton Mimi

EX-90 EEEEE GMD-DOM

3-05 365 35380 3.3 1160 3.0 1054

10th Dam: Wesswood Mandingo Ivy

VG-87 VEEVV

6-05 365 36330 3.6 1305 2.8 1018

Lifetime 144060 3.4 4933 2.9 4139

11th Dam: Wesswood Astro Matt Ester

VG-87 VEEVV GMD-DOM

6-08 365 31860 3.5 1125 2.9 921

Lifetime 140110 3.6 5029 3.0 4158

12th Dam: Wesswood Bell Claudette

VG-87 GMD-DOM

8-04 365 38150 3.8 1443 2.8 1064

Lifetime 280980 3.6 9997 2.9 8092

~Celebrate Summer Sale~



Fairmont Delta Rhonda-ET VG-85 +U+UU

1-11 321 23800 3.9 932 3.0 723

(Dam of Lot B & Lot 1)

LOT B Embryos

*Selling 5-#1 female IVF embryos
sired by Fortnite

PA = +2854GTPI +734NMS

Peak Fortnite-ET

3200824963 4/20 PTA +2973GTPI
+1462M +.13% +95F +.05% +59P
+835NMS +6.2PL +.3DPR 2.61SCS
+1.34T +1.36UDC +.45FLC 794R
Frazzled X VG-85 DOM Rubicon

Fairmont Delta Rhonda-ET

3-04 VG-85 +V+VV 313255088
4/20 PTA +2734GTPI +1197M +58F
+43P +633NMS +4.7PL +.6DPR
+.86T +1.57UDC +1.10FLC
1-11 321 23800 3.9 932 3.0 723
3-00 235 22840 3.0 757 3.0 683 RIP
proj. 305ME 30000M
Sire: Mr Mogul Delta 1427-ET
(Pictured above)

*Multiple daughters over +2900G

*Dtrs sold for up to \$32,000

2nd Dam

Fairmont Tuffenuff Ridge-ET
VG-86 +VG+V DOM
2-00 290 22360 4.0 887 3.6 803
2-11 305 28470 4.3 1221 3.9 1101

3rd Dam:

Co-Op Moonboy Rescue-ET
EX-90 VVEE' DOM
4-02 305 27150 4.1 1111 3.7 994

4th Dam:

Deervue-Acres Robin CRI-ET
VG-85 +V+V GMD-DOM
1-10 365 33140 4.7 1563 3.3 1101

5th Dam:

Deervue-Acres Outside Robyn
VG-87 VVE+V GMD-DOM
3-11 365 40100 4.8 1941 3.4 1356
Lifetime 143680 4.7 6814 3.4 4932

6th Dam:

Deervue-Acres Rudlph Olivia
VG-85 VVE++
5-04 365 25030 5.4 1345 3.0 757
Lifetime 100620 4.5 4554 3.3 3293

7th Dam:

Schaefer Simon Olivia
VG-88 EEEEE
6-01 305 32980 5.1 1690 3.0 994
Lifetime 162860 4.5 7294 3.1 4996

8th Dam:

Jonvale T T Ollie
EX-90,2E VEEE GMD
10-09 365 27190 4.1 1111 2.9 789
Lifetime 213340 3.7 7980 3.1 6074

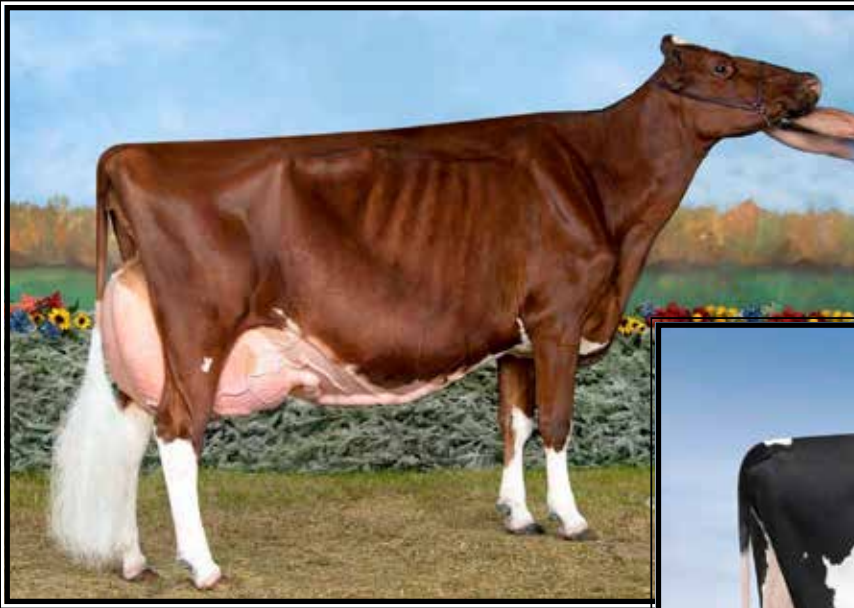
9th Dam:

Jonvale Tackman Ollie
VG-85 VVVV
3-03 308 15570 4.1 644

10th Dam:

Jonvale Zimmerman Alstar Ollie
VG-85 +V+V
Lifetime 123100 4.4 5380

~Celebrate Summer Sale~



**KHW Regiment Apple-RED-ET
EX-96,3E EEEEE DOM**

**Grand Champion of the 2011 Grand International Red & White Show*

(Mat. sister to the 4th Dam of Lots C, 2, 3 & 4)



**Blondin TJR Supersire Aroma-ET* RC
UG-85 UUUU+**

2-01 305 24350 4.5 1099 3.1 756
(3rd Dam of Lots C, 2, 3 & 4)

LOT C Embryos

*Selling 5-#1 female IVF embryos
sired by Fortnite

PA = +2856GTPI +752NMS

Peak Fortnite-ET

3200824963 4/20 PTA +2973GTPI
+1462M +.13% +95F +.05% +59P
+835NMS +6.2PL +.3DPR 2.61SCS
+1.34T +1.36UDC +.45FLC 794R
Frazzled X VG-85 DOM Rubicon

Le-O-La Ken Amber 41460-ET

3148918760 4/20 PTA +2738GTPI
+689M +.20% +84F +33P +669NMS
+4.6PL +1.1DPR +.88T +1.19UDC
-Recently fresh & looks great!
Sire: Pine-Tree Mod Kennedy713-ET

2nd Dam:

Endco Spring Anthem-ET
VG-86 VV+VV
2-01 365 29460 4.2 1236 3.0 895

3rd Dam: (Pictured above)

Blondin TJR Supersire Aroma-ET*RC
VG-85 VVVV+
2-01 305 24350 4.5 1099 3.1 756

4th Dam:

KHW Alchemy Adeline-RED-ET
VG-86 VVV+V
2-02 254 18080- 4.4 795 3.8 687

Maternal sister:

KHW Regiment Apple-RED-ET *CV
EX-96,3E EEEEE DOM
**Multiple All-Am & greatest R&W ever*
(Pictured above)

Maternal brother: 'Advent-RED'

5th Dam:

Kamps-Hollow Altitude-ET *CV
EX-95,2E EEEEE DOM
7-00 365 39690 4.7 1849 3.5 1385
Lifetime 144460 4.4 6295 3.7 5288

6th Dam: Clover-Mist Alisha-ET

EX-93,3E EEEEE DOM
8-07 365 36920 4.2 1553 3.4 1258
Lifetime 226470 4.7 10659 3.6 8149

7th Dam: Clover-Mist Augy Star-ET*RC

EX-94,4E EEEEE DOM
7-10 365 43140 5.0 2136 3.3 1421
Lifetime 206250 4.7 9793 3.5 7187

8th Dam: D-R-A August

EX-96,4E EEEEE DOM
8-05 365 27460 4.3 1187 3.2 871
Lifetime 190200 4.4 8281 3.3 4457
**Nom. All-American Aged Cow 1986*
**All-Wisconsin Aged Cow 1987*

9th Dam:

D-R-A Ideal Precious Leader EX-90,2E
7-06 358 20090 3.9 787 3.4 765

10th Dam:

D-R-A Princess Lad Leader EX-90,3E



View-Home Mrdian Iowa-ET VG-86 UUU+U DOM

2-02 365 35670 3.8 1342 3.3 1166

(Desccendants sell as Lots A, D, G and 24-54)

LOT D Embryos

*Selling 5-#1 female IVF embryos sired by Fortnite

PA = +2871GTPI +738NMS

Peak Fortnite-ET

3200824963 4/20 PTA +2973GTPI
+1462M +.13% +95F +.05% +59P
+835NMS +6.2PL +.3DPR 2.61SCS
+1.34T +1.36UDC +.45FLC 794R
Frazzled X VG-85 DOM Rubicon

BGP Helix Harper-ET

3145398959 4/20 PTA +2768GTPI
+2395M +101F +71P +641NMS
+1.1PL +1.27T +.95UDC
2-03 216 20320 4.2 850 3.2 612 RIP
Porj. 305ME 35680M
Sire: AOT Silver Helix-ET

2nd Dam: (Pictured above)
View-Home Mrdian Iowa-ET
VG-86 VVV+V DOM
2-02 365 35670 3.8 1342 3.3 1166

3rd Dam: (Pictured w/ Lot 35)
Pine-Tree 2149Robst 4846-ET
VG-87 EEV+V DOM
2-04 365 32001 4.7 1520 3.4 1097

*Offspring have sold for up to \$100,000
**Tremendous genomic transmitter!!*
*8 sons in active AI including Monterey,
Powerball-P, Missouri and Cashflow

4th Dam:
Pine-Tree Zenith Sheen
VG-87 VV+VV DOM
1-11 365 27883 3.9 1092 3.0 855

5th Dam:
Pine-Tree Martha Sheen-ET
VG-86 VV+VV DOM
1-11 365 31210 4.2 1305 3.1 968

6th Dam: Pine-Tree Missy Martha-ET
VG-86 VVV+V DOM
2-02 365 34730 3.6 1266 3.1 1070

7th Dam:
Wesswood-HC Rudy Missy-ET
EX-92,3E EEEEE GMD-DOM
4-11 365 40880 4.1 1665 3.4 1385
Lifetime 119610 4.1 4885 3.4 4031
**Global Cow of the Year 2014*

8th Dam: Wesswood Elton Mimi
EX-90 EEEEE GMD-DOM
3-05 365 35380 3.3 1160 3.0 1054

9th Dam: Wesswood Mandingo Ivy
VG-87 VEEVV
6-05 365 36330 3.6 1305 2.8 1018
Lifetime 144060 3.4 4933 2.9 4139

10th Dam: Wesswood Astro Matt Ester
VG-87 VEVV GMD-DOM
6-08 365 31860 3.5 1125 2.9 921
Lifetime 140110 3.6 5029 3.0 4158

11th Dam: Wesswood Bell Claudette
VG-87 GMD-DOM
8-04 365 38150 3.8 1443 2.8 1064
Lifetime 280980 3.6 9997 2.9 8092



BGP Frazzled Mallory-ET

1-10 331 27250 5.4 1347 3.9 920

(Dam of Lots E, F, G, 14 & 15)

LOT E Embryos

*Selling 5-#1 female IVF embryos sired by Torro

PA = +2896GTPI +787NMS

Sire of Lot E:

Maplehurst Delroy Torro-ET

3149798696 4/20 PTA +2950GTPI
+1535M +.13% +96F +.06% +65P
+853NMS +5.3PL +.3DPR 2.88SCS
+.77T +1.27UDC -.03FLC 75%R
Delroy X Gatedancer

LOT F Embryos

*Selling 7-#1 & 1-#2 female IVF embryos sired by Paco

PA = +2893GTPI +761NMS

Sire of Lot F:

ST Gen Helix Paco-ET

3132352801 4/20 PTA +2943GTPI
+700M +.30% +114F +.10% +51P
+800NMS +3.9PL -.4DPR 2.79SCS
+1.14T +1.03UDC +.95FLC 79%R
Helix X EX-91 Rubicon

LOT G Embryos

*Selling 3-#1 & 2-#2 female IVF embryos sired by Twitch

PA = +2905GTPI +759NMS

Sire of Lot G:

Mr Farnear Helix Twitch-ET

3132353302 4/20 PTA +2967GTPI
+1179M +.20% +103F +.04% +47P
+797NMS +4.2PL +1.0DPR 2.83SCS
+1.60T +1.70UDC +.96FLC 79%R
Helix X VG-86 Delta

Dam of Lots E, F & G:

BGP Frazzled Mallory-ET

3144506000 4/20 PTA +2842GTPI
+962M +.16% +84F +46P +721NMS
+4.9PL +1.23T +1.62UDC +.40FLC
1-10 331 27250 5.4 1347 3.9 920
proj. 305ME 33170M
Sire: Melarry Josuper Frazzled-ET
(Pictured above)

2nd Dam:

Ber-Sher Yoder Mia Maloy-ET
VG-85 VE+++

2-08 343 33165 4.3 1429 3.2 1077
*Fresh again and milking 135 lbs/day

3rd Dam:

Ber-Sher Jacey 8255-ET
VG-85 VVG+V

1-11 322 30550 2.9 893 3.1 956
2-11 297 29060 3.1 902 3.3 962
3-10 311 30130 3.3 1001 3.2 953

4th Dam: S-S-I McC Mali 8255-ET
VG-85 VVP+V DOM

4-06 305 28280 4.5 1271 3.4 969
Lifetime 103310 4.5 4735 3.3 3456

5th Dam: Hurtgenlea Ramos Merci-ET
VG-88, VG-MS DOM

3-08 365 33980 4.6 1565 3.7 1266

6th Dam: Hurtgenlea O Meara-ET
GP-84 GMD-DOM

2-02 365 30190 4.5 1349 3.5 1068

7th Dam: Hurtgenlea Dante Marissa-ET
EX-93,2E GMD

5-04 365 37810 3.9 1492 3.4 1279

8th Dam: Hurtgenlea Mandel Mara
EX-90 GMD-DOM

4-09 365 40660 3.0 1238 2.9 1164

9th Dam: JDF-WI Very Mary
EX-91,4E GMD-DOM

7-04 365 32280 3.5 1124 2.8 889

~Celebrate Summer Sale~



BGP Frazzled Sioux-ET

1-11 318 27100 4.0 1140 3.3 821 RIP \\
(Dam of Lots H & 28-34)

LOT H Embryos

*Selling 5-#1 female IVF embryos
sired by Torro

PA = +2893GTPI +801NMS

Maplehurst Delroy Torro-ET

3149798696 4/20 PTA +2950GTPI
+1535M +.13% +96F +.06% +65P
+853NMS +5.3PL +.3DPR 2.88SCS
+.77T +1.27UDC -.03FLC 75%R
Delroy X Gatedancer

BGP Frazzled Sioux-ET

3144505925 4/20 PTA +2835GTPI
+2183M +85F +52P +749NMS +5.9PL
2.65SCS +1.07T +1.39UDC -.46FLC
1-11 318 27100 4.0 1140 3.3 821 RIP
proj. 305ME 33700M

Sire: Melarry Josuper Frazzled-ET

(Pictured above)

Mat. bro.: 734HO91 Yolo

*Sisters have sold for up to \$162,500

2nd Dam: (Pictured w/ Lot 24)
View-Home Mrdian Iowa-ET
VG-86 VVV+V DOM

2-02 365 35670 3.8 1342 3.3 1166
3rd Dam: (Pictured w/ Lot 35)
Pine-Tree 2149Robst 4846-ET
VG-87 EEV+V DOM

2-04 365 32001 4.7 1520 3.4 1097

*Offspring have sold for up to \$100,000

**Tremendous genomic transmitter!!*

*8 sons in active AI including Monterey,

Powerball-P, Missouri and Cashflow

4th Dam:

Pine-Tree Zenith Sheen

VG-87 VV+VV DOM

1-11 365 27883 3.9 1092 3.0 855

5th Dam:

Pine-Tree Martha Sheen-ET

VG-86 VV+VV DOM

1-11 365 31210 4.2 1305 3.1 968

6th Dam: Pine-Tree Missy Martha-ET

VG-86 VVV+V DOM

2-02 365 34730 3.6 1266 3.1 1070

7th Dam:

Wesswood-HC Rudy Missy-ET

EX-92,3E EEEEE GMD-DOM

4-11 365 40880 4.1 1665 3.4 1385

Lifetime 119610 4.1 4885 3.4 4031

**Global Cow of the Year 2014*

8th Dam: Wesswood Elton Mimi

EX-90 EEEEE GMD-DOM

3-05 365 35380 3.3 1160 3.0 1054

9th Dam: Wesswood Mandingo Ivy

VG-87 VEEVV

6-05 365 36330 3.6 1305 2.8 1018

Lifetime 144060 3.4 4933 2.9 4139

10th Dam: Wesswood Astro Matt Ester

VG-87 VEVV GMD-DOM

6-08 365 31860 3.5 1125 2.9 921

Lifetime 140110 3.6 5029 3.0 4158

11th Dam: Wesswood Bell Claudette

VG-87 GMD-DOM

8-04 365 38150 3.8 1443 2.8 1064

Lifetime 280980 3.6 9997 2.9 8092



Fairmont Delta Rhonda-ET VG-85 +U+UU

1-11 321 23800 3.9 932 3.0 723

(Dam of Lot 1)

LOT 1

BGP Solution Rhonda 1096-ET

3209721733 99%RHA-I
Born 4/3/20 6/20 PTA +2921GTPI
+1768M +.02% +74F +.00% +56P
+783NMS +6.2PL +1DPR 2.73SCS
+1.38T +1.61UDC +1.26FLC
+190FE +.6FI +7.9SCE +742CMS

A2/A2 BB +930DWPS

*Housed at Ru-Barb Farm, LaPorte, IN

Fustead S-S-I Solution-ET

3139490455 4/20 PTA +2889GTPI
+1642M +.09% +89F +.00% +51P
+782NMS +5.8PL -1.5DPR 2.67SCS
+1.28T +1.23UDC +1.19FLC 79%R
Frazzled X VG-85 DOM Rubicon

Fairmont Delta Rhonda-ET

3-04 VG-85 +V+VV 3132555088
4/20 PTA +2734GTPI +1197M +58F
+43P +633NMS +4.7PL +.6DPR
+.86T +1.57UDC +1.10FLC
1-11 321 23800 3.9 932 3.0 723
3-00 235 22840 3.0 757 3.0 683 RIP
proj. 305ME 30000M
Sire: Mr Mogul Delta 1427-ET

(Pictured above)

*Multiple daughters over +2900G

*Dtrs sold for up to \$32,000

2nd Dam

Fairmont Tuffenuff Ridge-ET
VG-86 +VG+V DOM
2-00 290 22360 4.0 887 3.6 803
2-11 305 28470 4.3 1221 3.9 1101

3rd Dam:

Co-Op Moonboy Rescue-ET
EX-90 VVEE' DOM
4-02 305 27150 4.1 1111 3.7 994

4th Dam:

Deervue-Acres Robin CRI-ET
VG-85 +V+V GMD-DOM
1-10 365 33140 4.7 1563 3.3 1101

5th Dam:

Deervue-Acres Outside Robyn
VG-87 VVE+V GMD-DOM
3-11 365 40100 4.8 1941 3.4 1356
Lifetime 143680 4.7 6814 3.4 4932

6th Dam:

Deervue-Acres Rudlph Olivia
VG-85 VVE++
5-04 365 25030 5.4 1345 3.0 757
Lifetime 100620 4.5 4554 3.3 3293

7th Dam:

Schaefer Simon Olivia
VG-88 EEEEE
6-01 305 32980 5.1 1690 3.0 994
Lifetime 162860 4.5 7294 3.1 4996

8th Dam:

Jonvale T T Ollie
EX-90,2E VEEE GMD
10-09 365 27190 4.1 1111 2.9 789
Lifetime 213340 3.7 7980 3.1 6074

9th Dam:

Jonvale Tackman Ollie
VG-85 VVVV
3-03 308 15570 4.1 644

10th Dam:

Jonvale Zimmerman Alstar Ollie
VG-85 +V+V
Lifetime 123100 4.4 5380

~Celebrate Summer Sale~



**KHW Regiment Apple-RED-ET
EX-96,3E EEEEE DOM**

**Grand Champion of the 2011 Grand International Red & White Show*

(Mat. sister to the 4th Dam of Lots C, 2, 3 & 4)



**Blondin TJR Supersire Aroma-ET*RC
UG-85 UUUU+**

2-01 305 24350 4.5 1099 3.1 756
(3rd Dam of Lots C, 2, 3 & 4)

LOT 2

BGP SLF Solution 19234-ET

3209480740 99%RHA-I
Born 3/23/20 6/20 PTA+2875GTPI
+906M +.23% +101F +.05% +44P
+827NMS\$ +6.0PL +.3DPR 2.88SCS
+.72T +.74UDC +.84FLC
+225FE +.3FI 6.7%SCE +855CMS\$
A2/A2 AB +981DWPS

LOT 3

BGP SLF Solution 19224-ET

3209480730 99%RHA-I
Born 3/18/20 5/20 PTA+2809GTPI
+1485M +.08% +80F +.02% +50P
+733NMS\$ +6.3PL +.3DPR 2.77SCS
+.92T +.69UDC +.73FLC
+186FE +.5FI 6.0%SCE +755CMS\$
A1/A2

LOT 4

BGP SLF Rome 19050-ET

3209480556 99%RHA-I
Born 12/15/19 4/20 PTA+2843GTPI
+660M +.29% +109F +.05% +35P
+795NMS\$ +5.4PL +.7DPR 2.78SCS
+.28T +.64UDC -.25FLC
+228FE +1.5FI 7.8%SCE +824CMS\$
A1/A2 AB

Sire of Lots 2 & 3:

Fustead S-S-I Solution-ET
3139490455 4/20 PTA+2889GTPI
+1642M +.09% +89F +.00% +51P
+782NMS\$ +5.8PL -1.5DPR 2.67SCS
+1.28T +1.23UDC +1.19FLC 79%R
Frazzled X VG-85 DOM Rubicon

Sire of Lot 4:

De-Su Frazzld Rome 14192-ET
3141559586 4/20 PTA+2854GTPI
+1084M +.17% +92F +.04% +45P
+769NMS\$ +6.3PL +1.0DPR 2.53SCS
+.45T +.55UDC -.33FLC 79%R
Frazzled X GP-81 Yoder

Dam of Lots 2, 3 & 4:

Le-O-La Ken Amber 41460-ET
3148918760 4/20 PTA+2738GTPI
+689M +.20% +84F +33P +669NMS\$
+4.6PL +1.1DPR +.88T +1.19UDC
-Recently fresh & looks great!
Sire: Pine-Tree Mod Kennedy713-ET

**Lots 2 thru 4 all housed at
Swisslane Farm, Alto, MI**

2nd Dam:

Endco Spring Anthem-ET
VG-86 VV+VV
2-01 365 29460 4.2 1236 3.0 895

3rd Dam: (Pictured above)

Blondin TJR Supersire Aroma-ET*RC
VG-85 VVVV+
2-01 305 24350 4.5 1099 3.1 756

4th Dam:

KHW Alchemy Adeline-RED-ET
VG-86 VVV+V
2-02 254 18080- 4.4 795 3.8 687

Maternal sister:

KHW Regiment Apple-RED-ET *CV
EX-96,3E EEEEE DOM
**Multiple All-Am & greatest R&W ever*
(Pictured above)

Maternal brother: 'Advent-RED'

5th Dam:

Kamps-Hollow Altitude-ET *CV
EX-95,2E EEEEE DOM
7-00 365 39690 4.7 1849 3.5 1385
Lifetime 144460 4.4 6295 3.7 5288

6th Dam: Clover-Mist Alisha-ET

EX-93,3E EEEEE DOM
8-07 365 36920 4.2 1553 3.4 1258
Lifetime 226470 4.7 10659 3.6 8149

7th Dam: Clover-Mist Augy Star-ET*RC

EX-94,4E EEEEE DOM
7-10 365 43140 5.0 2136 3.3 1421
Lifetime 206250 4.7 9793 3.5 7187

8th Dam: D-R-A August

EX-96,4E EEEEE DOM
8-05 365 27460 4.3 1187 3.2 871
Lifetime 190200 4.4 8281 3.3 4457
**Nom. All-American Aged Cow 1986*
**All-Wisconsin Aged Cow 1987*

9th Dam:

D-R-A Ideal Precious Leader EX-90,2E
7-06 358 20090 3.9 787 3.4 765

10th Dam:

D-R-A Princess Lad Leader EX-90,3E



View-Home Uno Hope-ET EX-92 EEEEE DOM

2-00 365 25810 4.7 1209 3.7 948

(2nd Dam of Lots 5-10)

LOT 5

BGP SLF Solution 19197-ET

3209480703 99%RHA-I
Born 2/23/20 4/20 PTA +2912GTPI
+1111M +.15% +87F +.04% +47P
+798NM\$ +5.5PL +1.9DPR 2.72SCS
+.97T +.92UDC +.05FLC
+195FE +2.4FI 7.1%SCE +826CM\$

A2/A2

+200GTPI points above PA!

***Housed at Swisslane Farms, Alto, MI**

Fustead S-S-I Solution-ET

3139490455 4/20 PTA +2889GTPI
+1642M +.09% +89F +.00% +51P
+782NM\$ +5.8PL -1.5DPR 2.67SCS
+1.28T +1.23UDC +1.19FLC 79%R
Frazzled X VG-85 DOM Rubicon

BGP Flag Hopa-ET

3145066212 4/20 PTA +2542GTPI
+.25% +63F +.08% +16P +549NM\$
+3.8PL +2.3DPR +.06T +.89UDC
Sire: S-S-I 1stclass Flagship-ET

2nd Dam: (Pictured above)

**View-Home Uno Hope-ET
EX-92 EEEEE DOM**
2-00 365 25810 4.7 1209 3.7 948

3rd Dam: (Pictured w/ Lot 35)

**Pine-Tree 2149Robst 4846-ET
VG-87 EEV+V DOM**
2-04 365 32001 4.7 1520 3.4 1097

***Offspring have sold for up to \$100,000**

***Tremendous genomic transmitter!!**

***8 sons in active AI including Monterey,
Powerball-P, Missouri and Cashflow**

4th Dam:

**Pine-Tree Zenith Sheen
VG-87 VV+VV DOM**
1-11 365 27883 3.9 1092 3.0 855

5th Dam:

**Pine-Tree Martha Sheen-ET
VG-86 VV+VV DOM**
1-11 365 31210 4.2 1305 3.1 968

6th Dam: Pine-Tree Missy Martha-ET

VG-86 VVV+V DOM
2-02 365 34730 3.6 1266 3.1 1070

7th Dam:

**Wesswood-HC Rudy Missy-ET
EX-92,3E EEEEE GMD-DOM**
4-11 365 40880 4.1 1665 3.4 1385
Lifetime 119610 4.1 4885 3.4 4031
***Global Cow of the Year 2014**

8th Dam: Wesswood Elton Mimi

EX-90 EEEEE GMD-DOM
3-05 365 35380 3.3 1160 3.0 1054

9th Dam: Wesswood Mandingo Ivy

VG-87 VEEVV
6-05 365 36330 3.6 1305 2.8 1018
Lifetime 144060 3.4 4933 2.9 4139

10th Dam: Wesswood Astro Matt Ester

VG-87 VEVV GMD-DOM
6-08 365 31860 3.5 1125 2.9 921
Lifetime 140110 3.6 5029 3.0 4158

11th Dam: Wesswood Bell Claudette

VG-87 GMD-DOM
8-04 365 38150 3.8 1443 2.8 1064
Lifetime 280980 3.6 9997 2.9 8092

LOT 6

BGP Solution Dhrrmy 1082-ET

3209721719 99%RHA-I
Born 2/7/20 4/20 PTA +2841GTPI
+669M +.15% +68F +.04% +33P
+682NM\$ +5.6PL +1.6DPR 2.74SCS
+1.86T +1.87UDC +1.10FLC
+148FE +1.8FI 7.2%SCE +708CM\$

A2/A2 AB

*Housed at Ru-Barb Farm, LaPorte, IN

Fustead S-S-I Solution-ET

3139490455 4/20 PTA +2889GTPI
+1642M +.09% +89F +.00% +51P
+782NM\$ +5.8PL -1.5DPR 2.67SCS
+1.28T +1.23UDC +1.19FLC 79%R
Frazzled X VG-85 DOM Rubicon

BGP Delta Harmony-ET

3-09 VG-87 +VV+E 143855815
4/20 PTA +2607GTPI +.21%F +52F
+18P +496NM\$ +4.2PL +1.4DPR
2.90SCS +1.74T +2.03UDC +.73FLC
2-04 348 29840 5.1 1484 3.7 1039
Sire: Mr Mogul Delta 1427-ET

2nd Dam: (Pictured w/ lot 5)

View-Home Uno Hope-ET
EX-92 EEEEE DOM
2-00 365 25810 4.7 1209 3.7 948

3rd Dam: (Pictured w/ Lot 35)

Pine-Tree 2149Robst 4846-ET
VG-87 EEV+V DOM
2-04 365 32001 4.7 1520 3.4 1097

*Offspring have sold for up to \$100,000
**Tremendous genomic transmitter!!*
*8 sons in active AI including Monterey,
Powerball-P, Missouri and Cashflow

4th Dam:

Pine-Tree Zenith Sheen
VG-87 VV+VV DOM
1-11 365 27883 3.9 1092 3.0 855

5th Dam:

Pine-Tree Martha Sheen-ET
VG-86 VV+VV DOM
1-11 365 31210 4.2 1305 3.1 968

6th Dam: Pine-Tree Missy Martha-ET

VG-86 VVV+V DOM
2-02 365 34730 3.6 1266 3.1 1070

7th Dam: Wesswood-HC Rudy Missy-ET

EX-92.3E EEEEE GMD-DOM
4-11 365 40880 4.1 1665 3.4 1385
Lifetime 119610 4.1 4885 3.4 4031

**Global Cow of the Year 2014*

8th Dam: Wesswood Elton Mimi

EX-90 EEEEE GMD-DOM
3-05 365 35380 3.3 1160 3.0 1054

9th Dam: Wesswood Mandingo Ivy

VG-87 VEEVV
6-05 365 36330 3.6 1305 2.8 1018
Lifetime 144060 3.4 4933 2.9 4139

10th Dam: Wesswood Astro Matt Ester

VG-87 VEVV GMD-DOM
6-08 365 31860 3.5 1125 2.9 921
Lifetime 140110 3.6 5029 3.0 4158

11th Dam: Wesswood Bell Claudette

VG-87 GMD-DOM
8-04 365 38150 3.8 1443 2.8 1064
Lifetime 280980 3.6 9997 2.9 8092

LOT 7

BGP SLF Riveting 19182-ET

3209480688 99%RHA-I
Born 2/15/20 4/20 PTA +2821GTPI
+582M +.18% +74F +.06% +35P
+690NM\$ +6.1PL +1.1DSPR 2.63SCS
+1.36T +1.64UDC +.32FLC
+154FE +1.4FI 8.4%SCE +727CM\$

A2/A2

*Housed at Swisslane Farms, Alto, MI

S-S-I BG Frazzld Riveting-ET

3133120549 4/20 PTA +2828GTPI
+738M +.08% +50F +.04% +33P
+681NM\$ +7.2PL +1.7DPR 2.50SCS
+1.20T +1.92UDC +.69FLC 79%R
Frazzled X VG-87 Profit

BGP Jedi Heaven-ET

2-04 G-78 +G+GG 143934640
4/20 PTA +2584GTPI +1046M +60F
+46P +482NM\$ +3.5PL 2.82CS
+1.18T +.75UDC -.54FLC
1-08 347 25993 4.6 1224 3.4 900
2-09 306 27369 4.5 1237 3.4 933
Sire: S-S-I Montross Jedi-ET

2nd Dam: (Pictured w/ Lot 5)

View-Home Uno Hope-ET
EX-92 EEEEE DOM
2-00 365 25810 4.7 1209 3.7 948

3rd Dam: (Pictured w/ Lot 35)

Pine-Tree 2149Robst 4846-ET
VG-87 EEV+V DOM
2-04 365 32001 4.7 1520 3.4 1097

*Offspring have sold for up to \$100,000
**Tremendous genomic transmitter!!*
*8 sons in active AI including Monterey,
Powerball-P, Missouri and Cashflow

4th Dam:

Pine-Tree Zenith Sheen
VG-87 VV+VV DOM
1-11 365 27883 3.9 1092 3.0 855

5th Dam:

Pine-Tree Martha Sheen-ET
VG-86 VV+VV DOM
1-11 365 31210 4.2 1305 3.1 968

6th Dam: Pine-Tree Missy Martha-ET

VG-86 VVV+V DOM
2-02 365 34730 3.6 1266 3.1 1070

7th Dam: Wesswood-HC Rudy Missy-ET

EX-92.3E EEEEE GMD-DOM
4-11 365 40880 4.1 1665 3.4 1385
Lifetime 119610 4.1 4885 3.4 4031

**Global Cow of the Year 2014*

8th Dam: Wesswood Elton Mimi

EX-90 EEEEE GMD-DOM
3-05 365 35380 3.3 1160 3.0 1054

9th Dam: Wesswood Mandingo Ivy

VG-87 VEEVV
6-05 365 36330 3.6 1305 2.8 1018
Lifetime 144060 3.4 4933 2.9 4139

10th Dam: Wesswood Astro Matt Ester

VG-87 VEVV GMD-DOM
6-08 365 31860 3.5 1125 2.9 921
Lifetime 140110 3.6 5029 3.0 4158

11th Dam: Wesswood Bell Claudette

VG-87 GMD-DOM
8-04 365 38150 3.8 1443 2.8 1064
Lifetime 280980 3.6 9997 2.9 8092



BGP Delta Heaven-ET VG-85 ++UUU

2-02 304 22690 5.2 1169 3.9 885

(Dam of Lots 8 & 9)

LOT 8

BGP Rome Dhvn 1019-ET

3209721656 99%RHA-I
Born 12/28/19 4/20 PTA +2828GTPI
+404M +.29% +98F +.10% +41P
+717NMS\$ +4.9PL -.6DPR 2.71SCS
+1.25T +1.26UDC +.20FLC
+211FE -.3FI 8.6%SCE +770CMS\$
A2/A2 BB

LOT 9

BGP Rome Dhvn 1018-ET

3209721655 99%RHA-I
Born 12/24/19 4/20 PTA +2803GTPI
+782M +.19% +86F +.05% +39P
+711NMS\$ +5.4PL +.1DPR 2.72SCS
+1.30T +1.26UDC +.33FLC
+193FE +.3FI 7.3%SCE +711CMS\$
A2/A2 BB

De-Su Frazzld Rome 14192-ET

3141559586 4/20 PTA +2854GTPI
+1084M +.17% +92F +.04% +45P
+769NMS\$ +6.3PL +1.0DPR 2.53SCS
+.45T +.55UDC -.33FLC 79%R
Frazzled X GP-81 Yoder

BGP Delta Heaven-ET

2-07 VG-85 ++VVV 143856115
4/20 PTA +2757GTPI +208M +65F
+31P +632NMS\$ +5.6PL +.7DPR
+2.02T +2.12UDC +.62FLC
2-02 304 22690 5.2 1169 3.9 885
Sire: Mr Mogul Delta 1427-ET
(Pictured above)

***Daus. sold for up to \$15,000**

2nd Dam: (Pictured w/ Lot 5)

View-Home Uno Hope-ET
EX-92 EEEEE DOM
2-00 365 25810 4.7 1209 3.7 948

3rd Dam: (Pictured w/ Lot 35)

Pine-Tree 2149Robst 4846-ET
VG-87 EEV+V DOM
2-04 365 32001 4.7 1520 3.4 1097
***Offspring have sold for up to \$100,000**
***Tremendous genomic transmitter!!**

***8 sons in active AI including Monterey, Powerball-P, Missouri and Cashflow**

4th Dam:

Pine-Tree Zenith Sheen
VG-87 VV+VV DOM
1-11 365 27883 3.9 1092 3.0 855

5th Dam:

Pine-Tree Martha Sheen-ET
VG-86 VV+VV DOM
1-11 365 31210 4.2 1305 3.1 968

6th Dam: Pine-Tree Missy Martha-ET

VG-86 VV+V DOM
2-02 365 34730 3.6 1266 3.1 1070

7th Dam:

Wesswood-HC Rudy Missy-ET
EX-92,3E EEEEE GMD-DOM
4-11 365 40880 4.1 1665 3.4 1385
Lifetime 119610 4.1 4885 3.4 4031
***Global Cow of the Year 2014**

8th Dam: Wesswood Elton Mimi

EX-90 EEEEE GMD-DOM
3-05 365 35380 3.3 1160 3.0 1054

9th Dam: Wesswood Mandingo Ivy

VG-87 VEEVV
6-05 365 36330 3.6 1305 2.8 1018
Lifetime 144060 3.4 4933 2.9 4139

10th Dam: Wesswood Astro Matt Ester

VG-87 VEEVV GMD-DOM
6-08 365 31860 3.5 1125 2.9 921
Lifetime 140110 3.6 5029 3.0 4158

11th Dam: Wesswood Bell Claudette

VG-87 GMD-DOM
8-04 365 38150 3.8 1443 2.8 1064
Lifetime 280980 3.6 9997 2.9 8092

*Lots 8 & 9 are both Housed at Ru-Barb Farm, LaPorte, IN

~Celebrate Summer Sale~



**Cookiecutter Ssire Has-ET
VG-88 EE++E DOM**

2-01 365 38700 4.5 1740 3.4 1325
(3rd Dam of Lot 11)



**AOT Modesty Hoss-ET
GP-83 +U+++
(2nd Dam of Lot 11)**

LOT 11

BGP Solution Pont 1071-ET

3209721708 99%RHA-I
Born 2/1/20 4/20 PTA +2860GTPI
+1908M +.06% +90F +.02% +65P
+745NMS +3.8PL -1.5DPR 2.91SCS
+1.38T +1.46UDC +.11FLC
+229FE -.8FI 8.2%SCE +761CMS

A2/A2 AB

*Housed at Ru-Barb Farm, LaPorte, IN

Fustead S-S-I Solution-ET

3139490455 4/20 PTA +2889GTPI
+1642M +.09% +89F +.00% +51P
+782NMS +5.8PL -1.5DPR 2.67SCS
+1.28T +1.23UDC +1.19FLC 79%R
Frazzled X VG-85 DOM Rubicon

Pine-Tree 12922 Pon 7965-ET

3145982888 4/20 PTA +2627GTPI
+1585M +71F +54P +517NMS +1.3PL
+1.73T +1.63UDC +.24FLC
-Recently fresh & looks great
Sire: Triplecrown Pontiff-ET

Maternal brother:

**29HO19000 Pine-Tree Heroic
4/20 PTA +2983GTPI +909NMS
+129F +5.0PL +.86UDC +940CMS**

2nd Dam: (Pictured above)

**AOT Modesty Hoss-ET
GP-83 +V+++
2-00 177 17388 4.4 771 3.2 556 inc.
*Dam of Heroic +2983G +909NMS**

3rd Dam: (Pictured above)

**Cookiecutter Ssire Has-ET
VG-88 EE++E DOM
3-11 365 43860 4.0 1747 3.4 1485
Lifetime 105510 4.4 4638 3.5 3676
*9th generation EX mammary!**

4th Dam: Cookiecutter Mom Halo-ET

**2-09 VG-88 VV+VE DOM
2-00 365 35280 5.2 1819 3.7 1304
*Global Impact Cow of the Year 2019!**

5th Dam: Cookiecutter Gld Holler-ET

**VG-88 VVV+E DOM
2-03 365 40730 3.5 1410 3.1 1249
*Nom. Int'l Cow of the Year 2016**

6th Dam:

**Ms Kings-Rnsm Champ Haley-ET
EX-90 EEVEE GMD-DOM
3-11 365 43690 3.7 1625 3.1 1357**

7th Dam: Regancrest-JDV Hanna-ET

**EX-90 EEVVE
4-07 365 45110 4.3 1922 3.2 1449**

8th Dam: Long-Haven Rudolph Dee-ET

**EX-90,2E EVVEE GMD-DOM
2-11 365 32720 4.8 1565 3.8 1252
Lifetime 166900 4.3 7099 3.5 5884**

9th Dam: Regancrest Elton Disrael-ET

**VG-88 EX-MS DOM
2-04 365 33617 4.5 1499 3.5 1169**

Full brother: 7HO5157 Durham

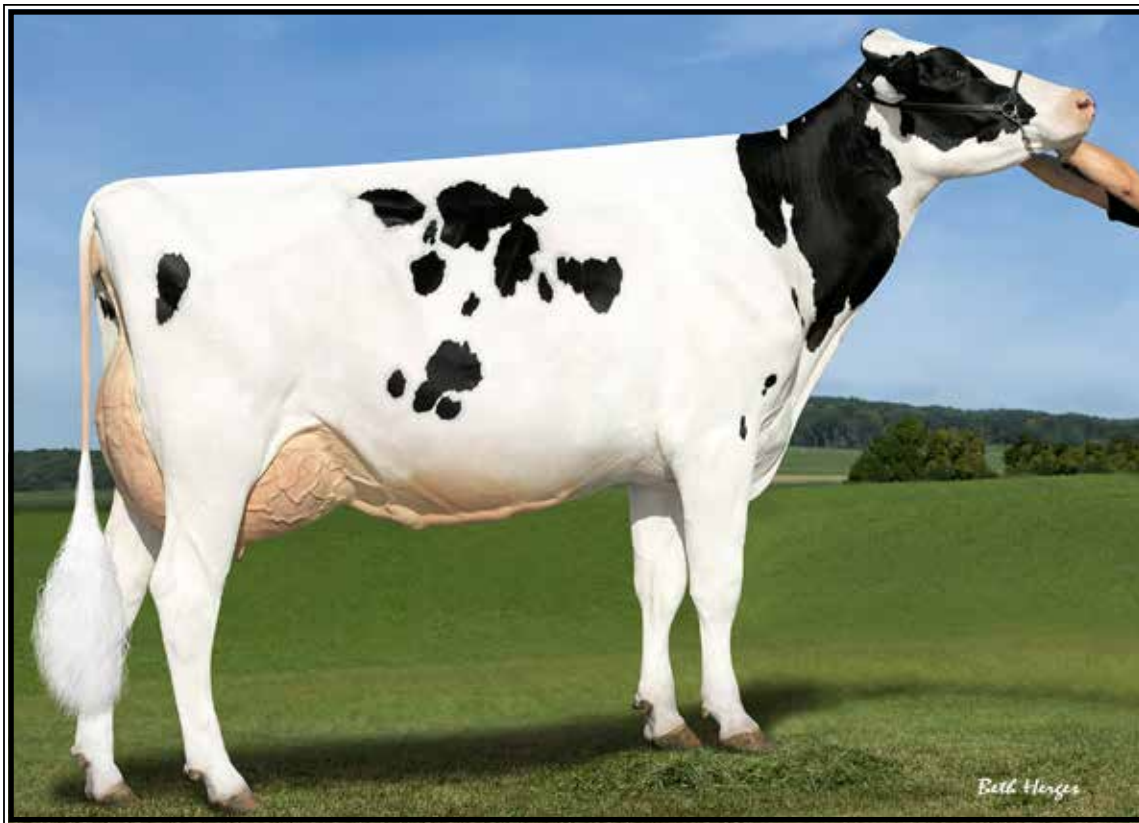
10th Dam: Snow-N Denises Dellia

**EX-95,2E EEEEE GMD-DOM
6-00 365 35230 4.0 1425 3.0 1049
Lifetime 180240 3.9 7108 3.2 5723**

*Dam of sires 'Durham' & 'Dundee'

11th Dam: Snow-N Dorys Denise

**EX-90,2E EX-MS GMD-DOM
5-09 365 33350 3.8 1256 3.1 1038
Lifetime 114010 3.6 4153 3.2 3649**



Sandy-Valley Eternity-ET EX-91, 92-MS

2-01 365 33350 4.6 1518 3.5 1175

(Maternal sister to Lots 12 & 13)

LOT 12

BGP SLF Solution 19084-ET

3209480590 99%RHA-I
Born 1/1/20 4/20 PTA +2860GTPI
+2033M +.07% +99F -.02% +58P
+818NMS +6.0PL -1.3DPR 2.78SCS
+.39T +.21UDC +.58FLC
+230FE -.4FI 7.7%SCE +818CMS
A1/A2 +975DWPS

LOT 13

BGP SLF Solution 19211-ET

3209480717 99%RHA-I
Born 3/7/20 4/20 PTA +2832GTPI
+1332M +.13% +88F +.03% +49P
+796NMS +6.6PL -.1DPR 2.78SCS
+.45T +.07UDC +.59FLC
+197FE +.4FI 7.0%SCE +816CMS
A2/A2 +1056DWPS

Maternal sister to Lots 12 & 13:

**Sandy-Valley Eternity-ET
EX-91, 92-MS**

2-01 365 33350 4.6 1518 3.5 1175

#24 GTPI Cow of the Breed at +2860G!
(Pictured above)

*Housed at Swisslane Farms, Alto, MI

Fustead S-S-I Solution-ET

3139490455 4/20 PTA +2889GTPI
+1642M +.09% +89F +.00% +51P
+782NMS +5.8PL -1.5DPR 2.67SCS
+1.28T +1.23UDC +1.19FLC 79%R
Frazzled X VG-85 DOM Rubicon

Sandy-Valley Morgan Era-ET

2-08 GP-83 +G+V+ GMD-DOM
70811901 4/20 PTA +2658GTPI
+1617M +75F +53P +647NMS +4.6PL
2-02 365 34790 4.2 1450 3.6 1258
Sire: S-S-I Bookem Morgan-ET

2nd Dam:

**Sandy-Valley RBS Emerald-ET
VG-88 EEVVV GMD**
2-01 365 36100 3.7 1323 3.3 1176
3-11 348 42010 4.2 1771 3.1 1316
4-11 332 36980 4.2 1570 3.3 1207
6-00 365 38240 4.2 1588 3.5 1339
Lifetime 200040 4.1 8154 3.2 6460

Maternal sister:

Sandy-Valley Robust Ruby-ET EX-90
*Dam of 'Rubicon'+2788G

3rd Dam:

**Sandy-Valley Plane Sapphire
VG-87 VV+VV DOM**
2-00 365 39130 3.3 1301 3.0 1175
*Dam of Sterling & Saloon

4th Dam:

**Sandy-Valley Bolt Sheila-ET
EX-90 EEVEV**
2-02 365 44790 3.6 1607 2.9 1294

5th Dam:

**Sandy-Valley Forbid Sully
VG-87, VG-MS GMD**
2-03 365 35110 3.7 1310 3.1 1095

6th Dam:

**Orthoapple Marshall Alia-ET
VG-89, VG-MS GMD-DOM**
2-04 365 36210 4.4 1605 3.2 1154

7th Dam: Regancrest-JB Tatum-ET

VG-87, VG-MS DOM
2-04 365 32682 3.6 1163 3.2 1059

8th Dam: Regancrest Tesk Della

EX-90 VEVEE GMD-DOM
5-11 365 35510 3.5 1234 3.2 1134

*Nom. Global Cow of the Year 2006
*Dam of Die-Hard: 1.75M units sold!

9th Dam: Snow-N Denises Dellia

EX-95,2E GMD-DOM
7-06 365 35610 4.0 1431 2.9 1035

*Dam of Durham & Dundee

10th Dam: Snow-N Dorys Denise

EX-90,2E EX-MS GMD-DOM
5-09 365 33350 3.8 1256 3.1 1038



BGP Frazzled Mallory-ET

1-10 331 27250 5.4 1347 3.9 920

(Dam of Lots E, F, G, 14 & 15)

LOT 14

BGP SLF Rome 19011-ET

3209480517 99%RHA-I
Born 12/3/19 4/20 PTA +2833GTPI
+1433M +.07% +75F +.04% +56P
+724NMS +5.5PL +1.4DPR 2.68SCS
+.45T +.44UDC -.18FLC
+183FE +2.0FI 9.1%SCE +752CMS
A2/A2 +999DWPS

LOT 15

BGP SLF Rome 19016-ET

3209480522 99%RHA-I
Born 12/5/19 4/20 PTA +2812GTPI
+1528M +.07% +80F +.02% +54P
+712NMS +5.1PL -.2DPR 2.71SCS
+.80T +.87UDC +.13FLC
+194FE +.7FI 9.0%SCE +731CMS
A2/A2 +1057DWPS

De-Su Frazzld Rome 14192-ET

3141559586 4/20 PTA +2854GTPI
+1084M +.17% +92F +.04% +45P
+769NMS +6.3PL +1.0DPR 2.53SCS
+.45T +.55UDC -.33FLC 79%R
Frazzled X GP-81 Yoder

BGP Frazzled Mallory-ET

3144506000 4/20 PTA +2842GTPI
+962M +.16% +84F +46P +721NMS
+4.9PL +1.23T +1.62UDC +.40FLC
1-10 331 27250 5.4 1347 3.9 920
proj. 305ME 33170M
Sire: Melarry Josuper Frazzled-ET
(Pictured above)

2nd Dam:

Ber-Sher Yoder Mia Maloy-ET
VG-85 VE+++
2-08 343 33165 4.3 1429 3.2 1077
*Fresh again and milking 135 lbs/day

3rd Dam:

Ber-Sher Jacey 8255-ET
VG-85 VVG+V
1-11 322 30550 2.9 893 3.1 956
2-11 297 29060 3.1 902 3.3 962
3-10 311 30130 3.3 1001 3.2 953

4th Dam:

S-S-I McC Mali 8255-ET
VG-85 VVP+V DOM
4-06 305 28280 4.5 1271 3.4 969
Lifetime 103310 4.5 4735 3.3 3456

5th Dam:

Hurtgenlea Ramos Merci-ET
VG-88, VG-MS DOM
3-08 365 33980 4.6 1565 3.7 1266

6th Dam:

Hurtgenlea O Meara-ET
GP-84 GMD-DOM
2-02 365 30190 4.5 1349 3.5 1068

7th Dam:

Hurtgenlea Dante Marissa-ET
EX-93,2E GMD
5-04 365 37810 3.9 1492 3.4 1279

8th Dam:

Hurtgenlea Mandel Mara
EX-90 GMD-DOM
4-09 365 40660 3.0 1238 2.9 1164

9th Dam:

JDF-WI Very Mary
EX-91,4E GMD-DOM
7-04 365 32280 3.5 1124 2.8 889



BGP Rub Hero-ET VG-85

2-02 365 32820 4.0 1277 3.6 1096

(2nd Dam of Lot 16)

LOT 16

BGP SLF Rome 19215-ET

3209480721 99%RHA-I
Born 3/11/20 5/20 PTA +2851GTPI
+757M +.24% +97F +.07% +43P
+775NMS\$ +6.0PL +.4DPR 2.67SCS
+.61T +.65UDC +.22FLC
+219FE +1.0FI 8.7%SCE +815CMS

A2/A2 AB

*Housed at Swisslane Farms, Alto, MI

De-Su Frazzld Rome 14192-ET

3141559586 4/20 PTA +2854GTPI
+1084M +.17% +92F +.04% +45P
+769NMS\$ +6.3PL +1.0DPR 2.53SCS
+.45T +.55UDC -.33FLC 79%R
Frazzled X GP-81 Yoder

BGP Resolve Debra-ET

3199893231 4/20 PTA +2893GTPI
+823M +74F +47P +762NMS\$ +7.0PL
+1.7DPR +1.00T +1.24UDC +.68FLC
-Recently fresh and looks great!
proj. 305ME 24750M
Sire: Blumenfield Jedi Resolve-ET

**2nd Dam: (Pictured above)
BGP Rub Hero-ET**

VG-85 VVVV+
2-02 365 32820 4.0 1277 3.6 1096

**3rd Dam: (Pictured w/ Lot 17)
Ri-Val-Re Bookem Hero-ET**

VG-86 EVV+V DOM
2-07 317 30430 3.9 1201 3.4 1032

4th Dam:

Ri-Val-Re Soert Alandra-ET
VG-85 VVG++
5-10 365 30830 3.3 1018 3.1 967
Lifetime 137720 3.4 4646 3.2 4342

5th Dam:

Ri-Val-Re Shottle Ali-ET
VG-88 EEVVV DOM
3-03 365 34890 3.6 1251 3.3 1140

6th Dam:

Ri-Val-Re Jesther Nina-ET
VG-88 GMD-DOM
6-03 365 41990 3.6 1506 3.4 1407
Lifetime 131260 3.5 4601 3.5 4557

7th Dam:

Peckenstein Terry Nike-ET *CV
VG-85 GMD-DOM
2-01 365 34580 3.8 1319 3.3 1144

8th Dam:

Peckenstein Elton Nikki-ET
EX-90 DOM
4-10 365 37500 4.2 1566 3.3 1227

9th Dam:

Peckenstein Bstar Scarlet
VG-86 GMD-DOM
2-01 365 33710 3.8 1280 3.1 1052

10th Dam:

Ramadaly Melvin-209 Kay
EX-90 GMD-DOM
4-06 365 42090 4.5 1898 3.0 1278
Lifetime 165230 4.1 6771 3.2 5292



Ri-Val-Re Bookem Hero-ET VG-86 EVU+U DOM

2-07 317 30430 3.9 1201 3.4 1032

(2nd Dam of Lot 17 and 3rd Dam of Lot 16)

LOT 17

Swisslane Achiever 19098-ET

3209480604 99%RHA-I
Born 1/6/20 4/20 PTA +2820GTPI
+748M +.18% +81F +.04% +36P
+790NMS +6.3PL +1.3DPR 2.73SCS
+.23T +.75UDC +.32FLC
+188FE +1.8FI 6.6%SCE +818CMS

A1/A2

*Housed at Swisslane Farms, Alto, MI

ABS Achiever-ET

3128557482 4/20 PTA +2835GTPI
+513M +.33% +113F +.06% +33P
+819NMS +5.2PL +.0DPR 2.77SCS
+.17T +.52UDC +.64FLC 87%R
Yoder X GP-83 DOM AltaEmbassy

BGP Delta Hermosa-ET

143579115 4/20 PTA +2520GTPI
+868M +38F +27P +3.6PL +1.0DPR
+1.17T +1.31UDC +.63FLC
2-01 305 32210 4.3 1396
3-02 305 25690 3.9 1377 3.1 1091
4-01 149 15570 3.4 596 3.0 458 RIP
-Last test- 132 lbs milk!
Sire: Mr Mogul Delta 1427-ET

**2nd Dam: (Pictured above)
Ri-Val-Re Bookem Hero-ET
VG-86 EVV+V DOM**

2-07 317 30430 3.9 1201 3.4 1032

**3rd Dam:
Ri-Val-Re Socrt Alandra-ET
VG-85 VVG++**

5-10 365 30830 3.3 1018 3.1 967
Lifetime 137720 3.4 4646 3.2 4342

**4th Dam:
Ri-Val-Re Shottle Ali-ET
VG-88 EEVVV DOM**

3-03 365 34890 3.6 1251 3.3 1140

**5th Dam:
Ri-Val-Re Jesther Nina-ET
VG-88 GMD-DOM**

6-03 365 41990 3.6 1506 3.4 1407
Lifetime 131260 3.5 4601 3.5 4557

**6th Dam:
Peckenstein Terry Nike-ET *CV
VG-85 GMD-DOM**

2-01 365 34580 3.8 1319 3.3 1144

**7th Dam:
Peckenstein Elton Nikki-ET
EX-90 DOM**

4-10 365 37500 4.2 1566 3.3 1227

**8th Dam:
Peckenstein Bstar Scarlet
VG-86 GMD-DOM**

2-01 365 33710 3.8 1280 3.1 1052

**9th Dam:
Ramadaly Melvin-209 Kay
EX-90 GMD-DOM**

4-06 365 42090 4.5 1898 3.0 1278
Lifetime 165230 4.1 6771 3.2 5292



**Seagull-Bay Ssire Debra-ET
UG-88 UUUUU DOM**

2-03 365 30670 4.0 1224 3.6 1114
(2nd Dam of Lots 18-20)

LOT 18

BGP SLF Rome 19227-ET

3209480733 99%RHA-I
Born 3/21/20 6/20 PTA +2828GTPI
+1170M +.16% +93F +.05% +52P
+706NMS +5.3PL -.2DPR 2.73SCS
+1.01T +.37UDC +.51FLC
+200FE +.5FI 9.1%SCE +739CMS
A2/A2 AB +931DWPS

*Housed at Swisslane Farms, Alto, MI

LOT 19

BGP Rome Mimi 1091-ET

3209721728 99%RHA-I
Born 3/14/20 6/20 PTA +2826GTPI
+906M +.15% +79F +.03% +38P
+740NMS +6.8PL +1.5DPR 2.58SCS
+.52T +1.10UDC +.21FLC
+169FE +1.7FI 8.9%SCE

A2/A2 AB

*Housed at Ru-Barb Farm, LaPorte, IN

LOT 20

BGP Solution Mimi 1054-ET

3209721691 99%RHA-I
Born 1/21/20 4/20 PTA +2816GTPI
+1463M +.05% +72F +.03% +53P
+712NMS +6.8PL +.2DPR 2.65SCS
+.77T +.77UDC +.80FLC
+167FE +.6FI 7.6%SCE +734CMS

A2/A2 BB

*Housed at Ru-Barb Farm, LaPorte, IN

Sire of Lots 18 & 19:

De-Su Frazzld Rome 14192-ET

3141559586 4/20 PTA +2854GTPI
+1084M +.17% +92F +.04% +45P
+769NMS +6.3PL +1.0DPR 2.53SCS
+.45T +.55UDC -.33FLC 79%R
Frazzled X GP-81 Yoder

Sire of Lot 20:

Fustead S-S-I Solution-ET

3139490455 4/20 PTA +2889GTPI
+1642M +.09% +89F +.00% +51P
+782NMS +5.8PL -1.5DPR 2.67SCS
+1.28T +1.23UDC +1.19FLC 79%R
Frazzled X VG-85 DOM Rubicon

Dam of Lots 18, 19 & 20:

BGP Magictouch Mimi-ET

3147399243 4/20 PTA +2644GTPI
+585M +56F +37P +537NMS +5.3PL
+1.0DPR +1.06T +.61UDC +.96FLC
2-01 90 4210 3.9 177 3.2 136 RIP
proj. 305ME 20330M

Sire: S-S-I Modesty Magictouch-ET

**2nd Dam: (Pictured above)
Seagull-Bay Ssire Debra-ET
VG-88 VVVVV DOM**

2-03 365 30670 4.0 1224 3.6 1114

3rd Dam:

**Pine-Tree Sharla Daphne-ET
VG-88 VE++E DOM**

4-01 365 35510 4.0 1416 3.2 1147
Lifetime 106440 4.1 4359 3.3 3551

4th Dam:

**Pine-Tree Mint Sharla-ET *DOM
*6 sons in AI**

5th Dam:

**Pine-Tree Outside Mint-ET
VG-87 VE+V+ DOM**

4-02 365 33710 4.2 1407 3.1 1059

6th Dam:

**Wesswood-HC Rudy Missy-ET
EX-92,3E EEEEE GMD-DOM**

4-11 365 40880 4.1 1665 3.4 1385
Lifetime 119610 4.1 4885 3.4 4031

*Global Cow of the Year 2014

7th Dam:

**Wesswood Elton Mimi
EX-90 EEEEE GMD-DOM**

3-05 365 35380 3.3 1160 3.0 1054

8th Dam:

**Wesswood Mandingo Ivy
VG-87 VEEVV**

6-05 365 36330 3.6 1305 2.8 1018
Lifetime 144060 3.4 4933 2.9 4139

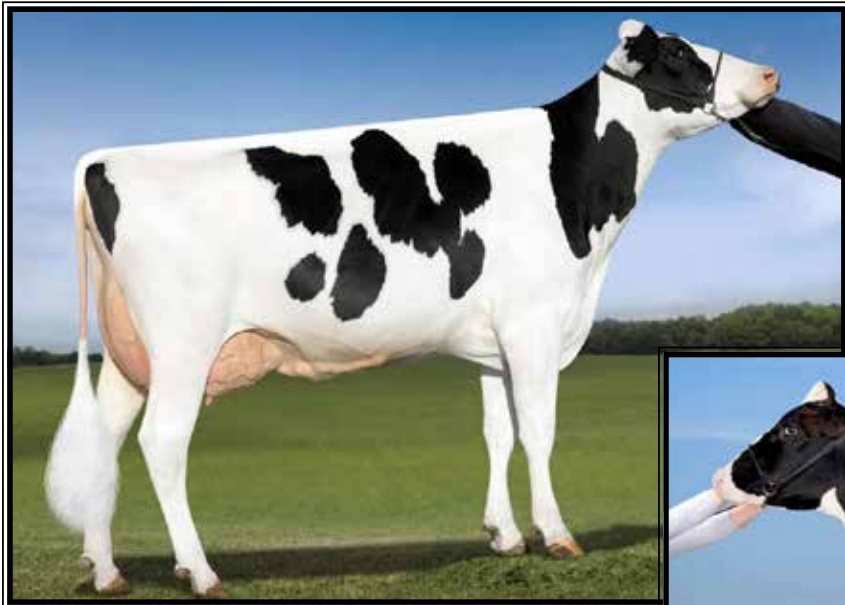
9th Dam:

**Wesswood Astro Matt Ester
VG-87 VEEVV GMD-DOM**

Lifetime 140110 3.6 5029 3.0 4158

**10th Dam: Wesswood Bell Claudette
VG-87 GMD-DOM**

8-04 365 38150 3.8 1443 2.8 1064
Lifetime 280980 3.6 9997 2.9 8092



**OCD Supersire 9882-ET
VG-86 VU++U DOM**

2-01 365 31870 4.1 1310 3.4 1083
(3rd Dam of Lots 21 & 22)



**Pine-Tree 9882 Prof 7019-ET
VG-85 VUG+U**

2-04 365 39172 4.2 1607 3.5 1386
(2nd Dam of Lots 21 & 22)

LOT 21

BGP SLF Renegade 19194-ET

3209480700 99%RHA-I
Born 2/22/20 4/20 PTA +2823GTPI
+1245M +.08% +72F +.03% +47P
+699NMS\$ +5.9PL +1.4DPR 2.62SCS
+.59T +.61UDC +.43FLC
+171FE +2.1FI 8.9%SCE +723CMS
A1/A2 AB +952DWPS

LOT 22

BGP SLF Renegade 19192-ET

3209480698 99%RHA-I
Born 2/20/20 4/20 PTA +2821GTPI
+904M +.12% +70F +.07% +48P
+718NMS\$ +6.2PL +1.9DPR 2.64SCS
+.29T +.30UDC +.22FLC
+173FE +2.3FI 8.3%SCE +759CMS
A1/A2 AB +1020DWPS

*Lots 21 & 22 Housed at
Swisslane Farms, Alto, MI

S-S-I Pr Renegade-ET

3142352961 4/20 PTA +2936GTPI
+1340M +.13% +91F +.07% +62P
+738NMS\$ +4.2PL +1.6DPR 2.81SCS
+1.16T +.72UDC +.94FLC 78%R
JaltaOak X Millington

Pine-Tree 7033 Frzld 406-ET

3149794827 4/20 PTA +2628GTPI
+742M +39F +31P +571NMS\$ +6.8PL
+1.3DPR +.19T +.58UDC -.23FLC
Sire: Melarry Josuper Frazzled-ET

2nd Dam: (Pictured above)
Pine-Tree 9882 Prof 7019-ET
VG-85 VVG+V
2-04 365 39172 4.2 1607 3.5 1386
-Fresh 5/17/20 w/ 2nd calf

3rd Dam: (Pictured above)
OCD Supersire 9882-ET
VG-86 VV+V DOM
2-01 365 31870 4.1 1310 3.4 1083

*Multiple active AI sows
*Sold for \$270,000 in World Classic 2016

4th Dam:
OCD Robust Shimmer-ET
EX-90 EEVVE DOM
2-03 365 34350 3.5 1200 3.2 1086

5th Dam: Ammon-Peachey Shana-ET
VG-87-CAN as 2yr-old DOM
2-02 365 34191 4.8 1653 3.4 1164
FULL sister: Ammon-Peachey Shauna EX-92
-dam of Supersire, Headliner, etc.

6th Dam: Pine-Tree Martha Sheen-ET
VG-86 VV+VV DOM
1-11 365 31210 4.2 1305 3.1 968

7th Dam: Pine-Tree Missy Martha-ET
VG-86 VVV+V DOM
2-02 365 34730 3.6 1266 3.1 1070

8th Dam: Wesswood-HC Rudy Missy-ET
EX-92,3E EEEEE GMD-DOM
4-11 365 40880 4.1 1665 3.4 1385
Lifetime 119610 4.1 4885 3.4 4031
*Global Cow of the Year 2014

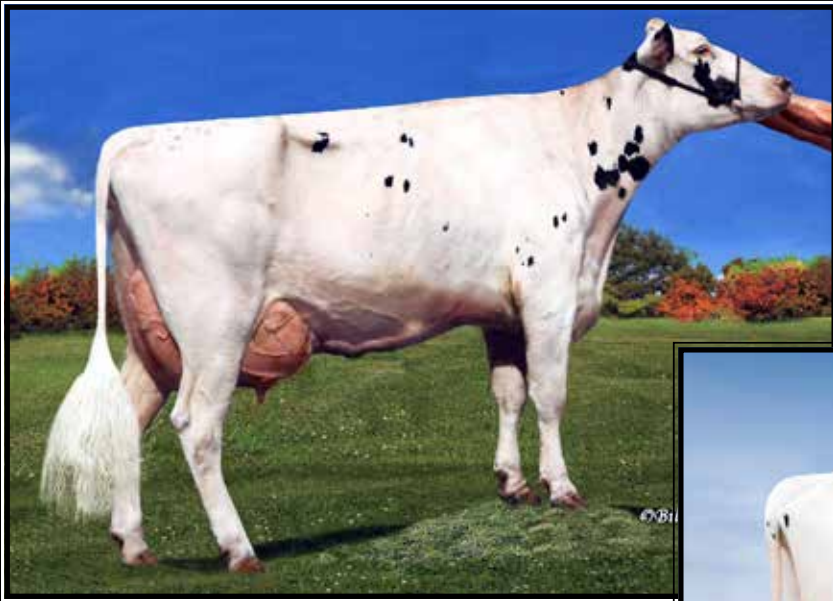
9th Dam: Wesswood Elton Mimi
EX-90 EEEEE GMD-DOM
3-05 365 35380 3.3 1160 3.0 1054

10th Dam: Wesswood Mandingo Ivy
VG-87 VEEVV
6-05 365 36330 3.6 1305 2.8 1018
Lifetime 144060 3.4 4933 2.9 4139

11th Dam: Wesswood Astro Matt Ester
VG-87 VEVV GMD-DOM
6-08 365 31860 3.5 1125 2.9 921
Lifetime 140110 3.6 5029 3.0 4158

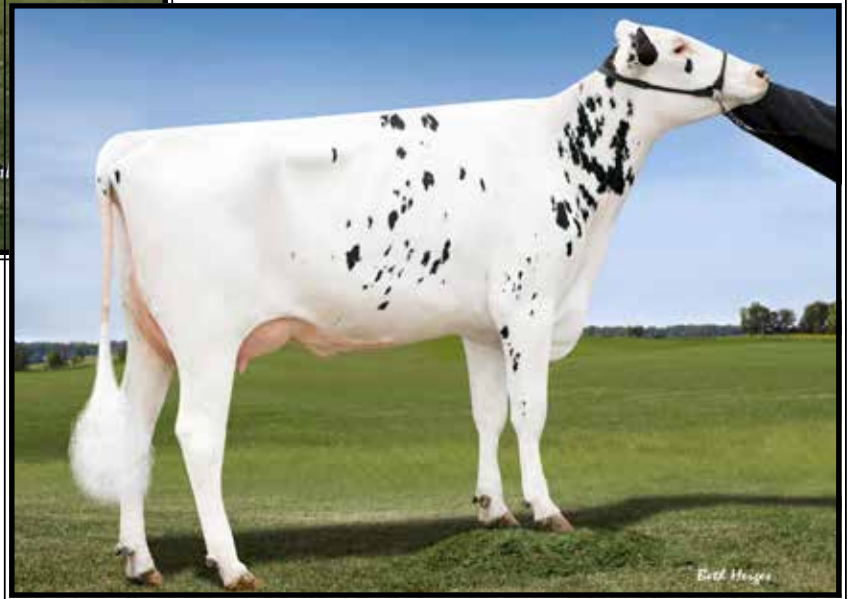
12th Dam: Wesswood Bell Claudette
VG-87 GMD-DOM
Lifetime 280980 3.6 9997 2.9 8092

~Celebrate Summer Sale~



**Brandt-View Jose Hallie
EX-91 EEVVE**

4-09 365 38460 3.8 1459 3.0 1164
(5th Dam of Lot 23)



Brandt-View N Uno Noodle-ET
(4th Dam of Lot 23)

LOT 23

BGP SLF Solution 19077-ET

3209480583 99%RHA-I
Born 12/27/19 4/20 PTA +2798GTPI
+1106M +.09% +69F +.05% +50P
+686NMS +5.9PL +4DPR 2.79SCS
+1.04T +.70UDC +1.41FLC
+171FE +.6FI 8.4%SCE +718CMS
A2/A2

*Housed at Swisslane Farms, Alto, MI

Fustead S-S-I Solution-ET

3139490455 4/20 PTA +2889GTPI
+1642M +.09% +89F +.00% +51P
+782NMS +5.8PL -1.5DPR 2.67SCS
+1.28T +1.23UDC +1.19FLC 79%R
Frazzled X VG-85 DOM Rubicon

OCD Rocksta Noodle 44591-ET

3144905469 4/20 PTA +2662GTPI
+1468M +43F +47P +536NMS +4.9PL
+1.9DPR +.81T +.93UDC +1.04FLC
Sire: Fairmont Bayont Rockstar-ET

2nd Dam:

OCD Rubicon 36225-ET
GP-80 +++G+
2-00 293 25390 3.8 959 3.3 831
3-00 293 30660 3.7 1126 3.3 1026

3rd Dam:

OCD Halogen 2372-ET
VG-86 VVV+V
3-01 365 42170 3.1 1325 3.1 1300
4-05 365 41920 3.1 1293 3.1 1312

4th Dam: (Pictured above)

Brandt-View N Uno Noodle-ET
2-03 169 9430 4.4 412 3.4 318

5th Dam: (Pictured above)

Brandt-View Jose Hallie
EX-91 EEVVE
4-09 365 38640 3.8 1459 3.0 1164

6th Dam:

Brandt-View Shottle Fern-ET *TV
VG-86 +V+VE
1-11 365 38400 4.8 1834 3.0 1154

*Sold for \$43,000 & Dam of former top
100 GTPI sires: Hefty, Bigtime & Chip

7th Dam:

Brandt-View Durham Ally *CV
VG-88 +E+VE GMD-DOM
3-02 365 51500 3.6 1858 3.1 1612
Lifetime 112330 3.6 4006 3.2 3620

8th Dam: Brandt-View Amel Alyssa-ET

VG-87, VG-MS
4-08 365 43210 3.7 1609 3.2 1365
Lifetime 225110 3.7 8390 3.2 1701

9th Dam:

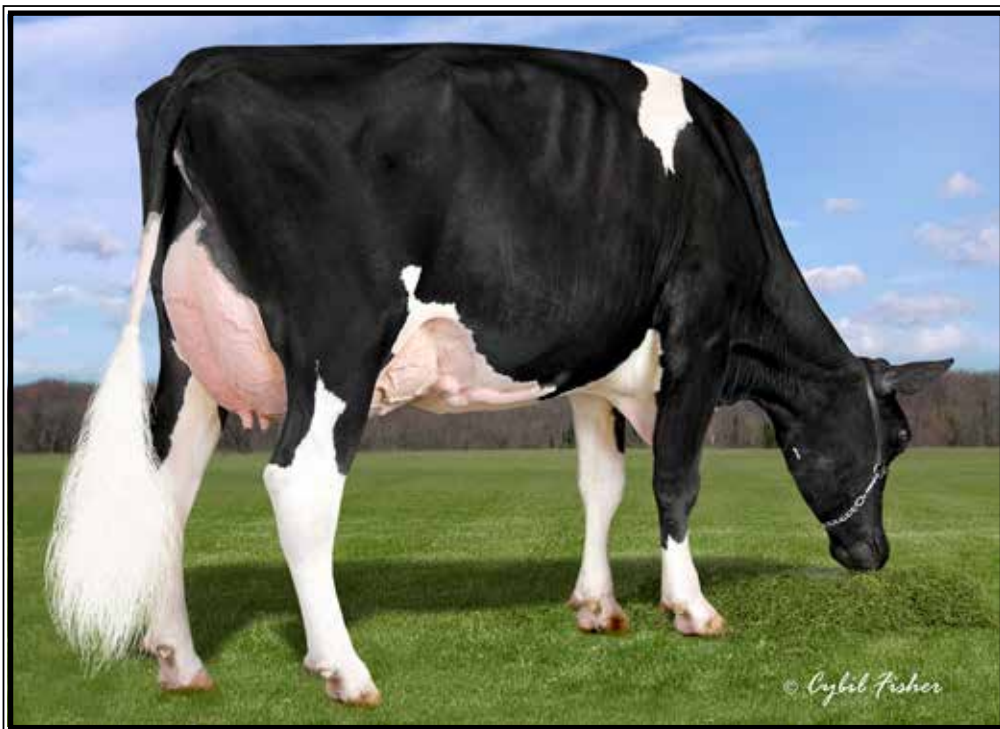
Brandt-View Dombinator Jewel
VG-85, VG-MS
2-01 365 32620 3.8 1247 3.2 1037

10th Dam: Da-Net Angie Leadman

EX-90, EX-MS GMD-DOM
8-08 365 45300 4.2 1900 3.0 1362
Lifetime 284316 3.9 11136 3.3 9758

11th Dam: Da-Net Bambi Steady

VG-87 EX-MS&FL GMD-DOM
3-10 365 30489 4.4 1333 3.0 910



**View-Home Mrdian Iowa-ET
UG-86 UUU+U DOM**

2-02 365 35670 3.8 1342 3.3 1166
(Desccendants sell as Lots 24-54)

LOT 24

BGP Rome Frederika 1088-ET

3209721725 99%RHA-I HH5
Born 2/18/20 5/20 PTA +2877GTPI
+1483M +.11% +89F +.02% +52P
+798NMS +6.5PL -.4DPR 2.58SCS
+.75T +.94UDC -.21FLC
+210FE +.4FI 8.8%SCE

A2/A2 BB

*Housed at Ru-Barb Farm, LaPorte, IN

LOT 25

BGP SLF Rome 19004-ET

3209480510 99%RHA-I HH5
Born 11/29/19 4/20 PTA +2833GTPI
+1395M +.13% +92F +.03% +51P
+786NMS +6.3PL +.1DPR 2.55SCS
+.22T +.21UDC -.71FLC
+204FE +.8FI 8.7%SCE +810CMS

A2/A2 +188DWPS

*Housed at Swisslane Farms, Alto, MI

LOT 27

BGP Ponch Frederika 1002-ET

3209721639 99%RHA-I HH5
Born 12/14/19 4/20 PTA +2798GTPI
+1503M -.04% +46F -.01% +43P
+692NMS +7.8PL +.6DPR 2.49SCS
+1.06T +1.91UDC +.28FLC
+129FE +1.1FI 7.9%SCE

A1/A2

*Housed at Ru-Barb Farm, LaPorte, IN

Sire of Lots 24, 25 & 26:

De-Su Frazzld Rome 14192-ET

3141559586 4/20 PTA +2854GTPI
+1084M +.17% +92F +.04% +45P
+769NMS +6.3PL +1.0DPR 2.53SCS
+.45T +.55UDC -.33FLC 79%R
Frazzled X GP-81 Yoder

Sire of Lot 27:

ST Gen Noble Poncho

3132353459 4/20 PTA +2842GTPI
+1096M +.03% +52F +.02% +41P
+677NMS +6.6PL +2.7DPR 2.66SCS
+1.53T +2.17UDC +.55FLC 76%R
Noble X Profit

Dam of Lots 24-27:

BGP Frazzled Frederika-ET

3145398968 4/20 PTA +2739GTPI
+2256M +58F +55P +668NMS +6.1PL
+1.01T +1.44UDC +.10FLC
2-02 223 23360 3.9 886 2.9 670 RIP
305ME 39520M

*Super young cow scores in July

*Bred and due back in fall

Sire: Melarry Josuper Frazzled-ET

Mat. bro.: 734HO91 Yolo

*Sisters have sold for up to \$162,500

2nd Dam: (Pictured above)

View-Home Mrdian Iowa-ET

VG-86 VVV+V DOM

2-02 365 35670 3.8 1342 3.3 1166

3rd Dam: (Pictured w/ Lot 35)

Pine-Tree 2149Robst 4846-ET

VG-87 EEV+V DOM

2-04 365 32001 4.7 1520 3.4 1097

*Offspring have sold for up to \$100,000

***Tremendous genomic transmitter!!**

*8 sons in active AI including Monterey, Powerball-P, Missouri and Cashflow

4th Dam:

Pine-Tree Zenith Sheen

VG-87 VV+VV DOM

1-11 365 27883 3.9 1092 3.0 855

5th Dam:

Pine-Tree Martha Sheen-ET

VG-86 VV+VV DOM

1-11 365 31210 4.2 1305 3.1 968

6th Dam:

Pine-Tree Missy Martha-ET

VG-86 VVV+V DOM

2-02 365 34730 3.6 1266 3.1 1070

7th Dam:

Wesswood-HC Rudy Missy-ET

EX-92,3E EEEEE GMD-DOM

4-11 365 40880 4.1 1665 3.4 1385

Lifetime 119610 4.1 4885 3.4 4031

***Global Cow of the Year 2014**

8th Dam:

Wesswood Elton Mimi

EX-90 EEEEE GMD-DOM

3-05 365 35380 3.3 1160 3.0 1054

9th Dam:

Wesswood Mandingo Ivy

VG-87 VEEVV

6-05 365 36330 3.6 1305 2.8 1018

Lifetime 144060 3.4 4933 2.9 4139

10th Dam:

Wesswood Astro Matt Ester

VG-87 VEVV GMD-DOM

6-08 365 31860 3.5 1125 2.9 921

Lifetime 140110 3.6 5029 3.0 4158

11th Dam:

Wesswood Bell Claudette

VG-87 GMD-DOM

8-04 365 38150 3.8 1443 2.8 1064

Lifetime 280980 3.6 9997 2.9 8092



BGP Frazzled Sioux-ET

1-11 318 27100 4.0 1140 3.3 821 RIP \ (Dam of Lots H & 28-34)

LOT 28

Ms BGP SLF Rome 19029-ET

3209480535 99%RHA-I HH5
Born 12/8/19 4/20 PTA +2879GTPI
+2048M +.02% +85F -.02% +56P
+782NMS +6.4PL -.4DPR 2.53SCS
+1.07T +.99UDC -.52FLC
+201FE +.6FI 9.0%SCE +783CMS
A2/A2 +1094DWPS

LOT 29

Ms BGP SLF Rome 19020-ET

3209480526 99%RHA-I
Born 12/5/19 4/20 PTA +2798GTPI
+1441M +.15% +100F +.00% +46P
+720NMS +4.7PL -.8DPR 2.69SCS
+.90T +.69UDC -.68FLC
+208FE +.3FI 10.1%SCE +731CMS
A2/A2 +977DWPS

*Lots 28 & 29 Housed at Swisslane Farms, Alto, MI

De-Su Frazzld Rome 14192-ET

3141559586 4/20 PTA +2854GTPI
+1084M +.17% +92F +.04% +45P
+769NMS +6.3PL +1.0DPR 2.53SCS
+.45T +.55UDC -.33FLC 79%R
Frazzled X GP-81 Yoder

BGP Frazzled Sioux-ET

3144505925 4/20 PTA +2835GTPI
+2183M +85F +52P +749NMS +5.9PL
2.65SCS +1.07T +1.39UDC -.46FLC
1-11 318 27100 4.0 1140 3.3 821 RIP
proj. 305ME 33700M
Sire: Melarry Josuper Frazzled-ET
(Pictured above)

Mat. bro.: 734HO91 Yolo

***Sisters have sold for up to \$162,500**

2nd Dam: (Pictured w/ Lot 24)
View-Home Mrdian Iowa-ET
VG-86 VVV+V DOM

2-02 365 35670 3.8 1342 3.3 1166
3rd Dam: (Pictured w/ Lot 35)
Pine-Tree 2149Robst 4846-ET
VG-87 EEV+V DOM

2-04 365 32001 4.7 1520 3.4 1097
***Offspring have sold for up to \$100,000**
***Tremendous genomic transmitter!!**

***8 sons in active AI including Monterey, Powerball-P, Missouri and Cashflow**

4th Dam:
Pine-Tree Zenith Sheen
VG-87 VV+VV DOM
1-11 365 27883 3.9 1092 3.0 855

5th Dam:
Pine-Tree Martha Sheen-ET
VG-86 VV+VV DOM
1-11 365 31210 4.2 1305 3.1 968

6th Dam: Pine-Tree Missy Martha-ET
VG-86 VVV+V DOM
2-02 365 34730 3.6 1266 3.1 1070

7th Dam:
Wesswood-HC Rudy Missy-ET
EX-92,3E EEEEE GMD-DOM
4-11 365 40880 4.1 1665 3.4 1385
Lifetime 119610 4.1 4885 3.4 4031
***Global Cow of the Year 2014**

8th Dam: Wesswood Elton Mimi
EX-90 EEEEE GMD-DOM
3-05 365 35380 3.3 1160 3.0 1054

9th Dam: Wesswood Mandingo Ivy
VG-87 VEEVV
6-05 365 36330 3.6 1305 2.8 1018
Lifetime 144060 3.4 4933 2.9 4139

10th Dam: Wesswood Astro Matt Ester
VG-87 VEVV GMD-DOM
6-08 365 31860 3.5 1125 2.9 921
Lifetime 140110 3.6 5029 3.0 4158

11th Dam: Wesswood Bell Claudette
VG-87 GMD-DOM
8-04 365 38150 3.8 1443 2.8 1064
Lifetime 280980 3.6 9997 2.9 8092

LOT 30

Ms BGP Maroon Sioux 1060-ET

3209721697 99%RHA-I
Born 1/22/20 4/20 PTA +2860GTPI
+1059M +.17% +91F +.03% +42P
+744NMS\$ +5.9PL -.5DPR 2.68SCS
+1.14T +1.69UDC +.30FLC
+187FE +.4FI 9.1%SCE +767CMS\$

A1/A2

LOT 31

Ms BGP Maroon Sioux 1069-ET

3209721706 99%RHA-I HH1 HH5
Born 1/30/20 4/20 PTA +2860GTPI
+1008M +.14% +80F +.04% +43P
+735NMS\$ +6.3PL +.8DPR 2.68SCS
+1.17T +1.76UDC +.26FLC
+175FE +1.0FI 9.8%SCE +762CMS\$

A1/A2 AB

LOT 32

Ms BGP Maroon Sioux 1057-ET

3209721694 99%RHA-I HH1
Born 1/22/20 4/20 PTA +2822GTPI
+1079M +.18% +94F +.04% +44P
+711NMS\$ +4.7PL +.0DPR 2.78SCS
+1.24T +1.15UDC +.07FLC
+194FE +.5FI 8.1%SCE +734CMS\$

A1/A2

LOT 33

Ms BGP Maroon Sioux 1059-ET

3209721696 99%RHA-I
Born 1/22/20 4/20 PTA +2801GTPI
+1068M +.18% +94F +.03% +43P
+709NMS\$ +54.6L -.8DPR 2.80SCS
+.99T +1.53UDC -.02FLC
+203FE +.0FI 8.6%SCE +731CMS\$

A1/A2

LOT 34

Ms BGP Maroon Sioux 1062-ET

3209721699 99%RHA-I
Born 1/24/20 4/20 PTA +2794GTPI
+1368M +.13% +91F +.01% +45P
+709NMS\$ +4.9PL -.5DPR 2.70SCS
+.87T +1.19UDC -.45FLC
+184FE +.2FI 8.8%SCE +722CMS\$

A1/A2

**Lots 30 thru 34 all housed at
Ru-Barb Farm, LaPorte, IN**

Dam of Lots 30 thru 34:

BGP Frazzled Sioux-ET

3144505925 4/20 PTA +2835GTPI
+2183M +85F +52P +749NMS\$
+5.9PL+1.07T +1.39UDC -.46FLC
1-11 318 27100 4.0 1140 3.3 821 RIP
proj. 305ME 33700M

Sire: Melarry Josuper Frazzled-ET
(Pictured w/ Lot 28)

Mat. bro.: 734HO91 Yolo

***Sisters have sold for up to \$162,500**

2nd Dam: (Pictured w/ Lot 24)

View-Home Mrdian Iowa-ET

VG-86 VVV+V DOM

2-02 365 35670 3.8 1342 3.3 1166

3rd Dam: (Pictured w/ Lot 35)

Pine-Tree 2149Robst 4846-ET

VG-87 EEV+V DOM

2-04 365 32001 4.7 1520 3.4 1097

***Offspring have sold for up to**

\$100,000

****Tremendous genomic transmitter!!***

***8 sons in active AI including Monterey, Powerball-P, Missouri, etc.**

4th Dam:

Pine-Tree Zenith Sheen

VG-87 VV+VV DOM

1-11 365 27883 3.9 1092 3.0 855

5th Dam:

Pine-Tree Martha Sheen-ET

VG-86 VV+VV DOM

1-11 365 31210 4.2 1305 3.1 968

6th Dam:

Pine-Tree Missy Martha-ET

VG-86 VVV+V DOM

2-02 365 34730 3.6 1266 3.1 1070

7th Dam:

Wesswood-HC Rudy Missy-ET

EX-92,3E EEEEE GMD-DOM

4-11 365 40880 4.1 1665 3.4 1385

Lifetime 119610 4.1 4885 3.4 4031

****Global Cow of the Year 2014***

8th Dam: Wesswood Elton Mimi

EX-90 EEEEE GMD-DOM

3-05 365 35380 3.3 1160 3.0 1054

9th Dam:

Wesswood Mandingo Ivy

VG-87 VEEVV

6-05 365 36330 3.6 1305 2.8 1018

Lifetime 144060 3.4 4933 2.9 4139

10th Dam:

Wesswood Astro Matt Ester

VG-87 VEEVV GMD-DOM

6-08 365 31860 3.5 1125 2.9 921

Lifetime 140110 3.6 5029 3.0 4158

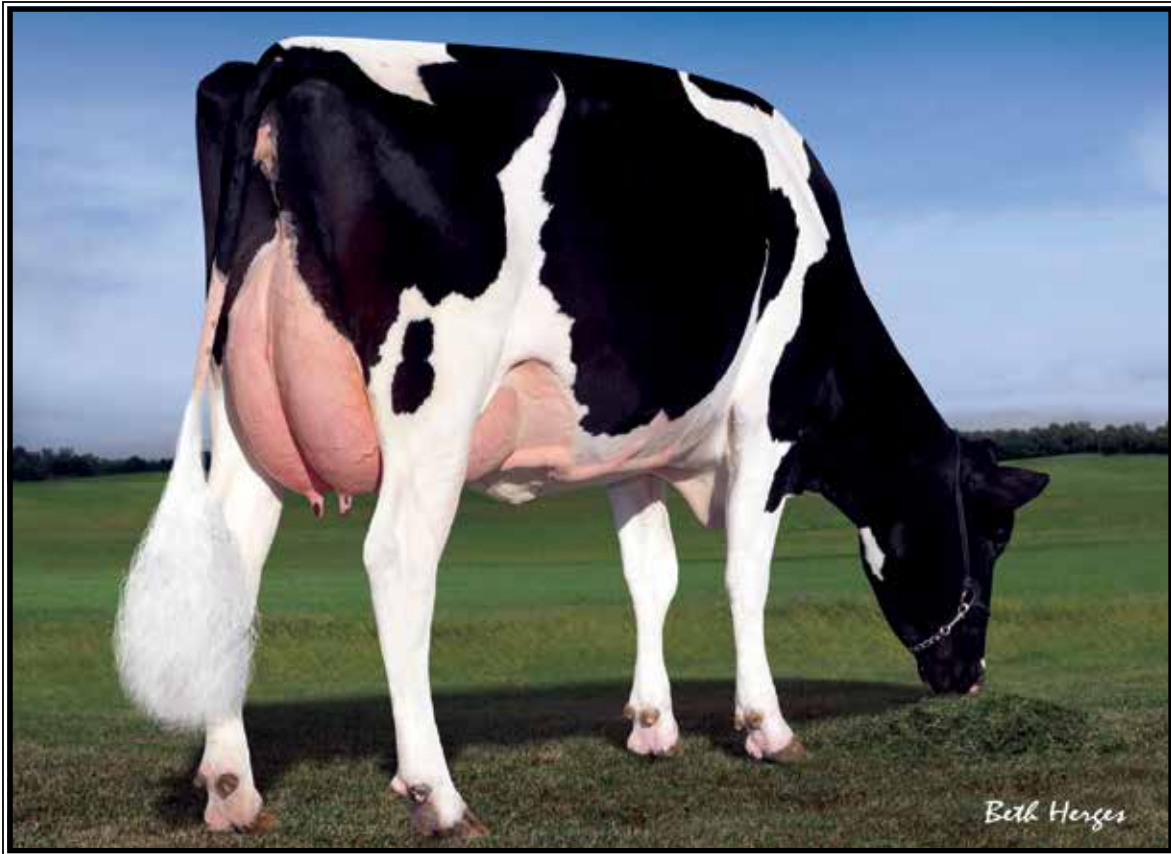
11th Dam:

Wesswood Bell Claudette

VG-87 GMD-DOM

8-04 365 38150 3.8 1443 2.8 1064

Lifetime 280980 3.6 9997 2.9 8092



Pine-Tree 2149Robst 4846-ET VG-87 EEV+U DOM

(Descendants sell as Lots 5-10 and 24-54)

LOT 35

BGP SLF Rome 19033-ET

3209480539 99%RHA-I
Born 12/10/19 4/20 PTA +2830GTPI
+1331M +.05% +66F +.01% +44P
+729NMS +7.2PL +.4DPR 2.46SCS
+1.03T +1.59UDC -.28FLC
+154FE +1.1FI 9.0%SCE +746CMS
A2/A2 +985DWPS

*Housed at Swisslane Farms, Alto, MI

De-Su Frazzld Rome 14192-ET

3141559586 4/20 PTA +2854GTPI
+1084M +.17% +92F +.04% +45P
+769NMS +6.3PL +1.0DPR 2.53SCS
+.45T +.55UDC -.33FLC 79%R
Frazzled X GP-81 Yoder

BGP Frazzled Fairfax-ET

3147399221 4/20 PTA +2762GTPI
+2182M +56F +54P +645NMS +6.3PL
+1.32T +1.91UDC -.28FLC
1-11 238 18710 3.4 695 2.9 560 RIP
proj. 305ME 29240M
Sire: Melarry Josuper Frazzled-ET

Mat. bro.: 734HO91 Yolo

*Sisters have sold for up to \$162,500

2nd Dam: (Pictured w/ Lot 24)
View-Home Mrdian Iowa-ET
VG-86 VVV+V DOM

2-02 365 35670 3.8 1342 3.3 1166

3rd Dam: (Pictured above)
Pine-Tree 2149Robst 4846-ET
VG-87 EEV+V DOM

2-04 365 32001 4.7 1520 3.4 1097

*Offspring have sold for up to \$100,000
**Tremendous genomic transmitter!!*

*8 sons in active AI including Monterey,
Powerball-P, Missouri and Cashflow

4th Dam:
Pine-Tree Zenith Sheen
VG-87 VV+VV DOM

1-11 365 27883 3.9 1092 3.0 855

5th Dam:
Pine-Tree Martha Sheen-ET
VG-86 VV+VV DOM

1-11 365 31210 4.2 1305 3.1 968

6th Dam: Pine-Tree Missy Martha-ET
VG-86 VVV+V DOM

2-02 365 34730 3.6 1266 3.1 1070

7th Dam:
Wesswood-HC Rudy Missy-ET
EX-92.3E EEEEE GMD-DOM

4-11 365 40880 4.1 1665 3.4 1385

Lifetime 119610 4.1 4885 3.4 4031

**Global Cow of the Year 2014*

8th Dam: Wesswood Elton Mimi
EX-90 EEEEE GMD-DOM

3-05 365 35380 3.3 1160 3.0 1054

9th Dam: Wesswood Mandingo Ivy
VG-87 VEEVV

6-05 365 36330 3.6 1305 2.8 1018

Lifetime 144060 3.4 4933 2.9 4139

10th Dam: Wesswood Astro Matt Ester
VG-87 VEVV GMD-DOM

6-08 365 31860 3.5 1125 2.9 921

Lifetime 140110 3.6 5029 3.0 4158

11th Dam: Wesswood Bell Claudette
VG-87 GMD-DOM

8-04 365 38150 3.8 1443 2.8 1064

Lifetime 280980 3.6 9997 2.9 8092

LOT 36

BGP Maroon Fairfax 1009-ET
3209721646 99%RHA-I
Born 12/23/19 4/20 PTA +2859GTPI
+1287M +.09% +76F +.04% +53P
+732NMS\$ +6.2PL +.2DPR 2.78SCS
+.94T +1.88UDC +.10FLC
+180FE +.7FI 9.0%SCE +760CMS
A2/A2

LOT 37

BGP Maroon Fairfax 1017-ET
3209721654 99%RHA-I
Born 12/24/19 4/20 PTA +2845GTPI
+1436M +.07% +76F +.02% +51P
+721NMS\$ +6.3PL -2.0DPR 2.66SCS
+1.41T +2.24UDC +.91FLC
+175FE -1.3FI 9.2%SCE +741CMS
A1/A2

LOT 38

BGP Maroon Fairfax 1008-ET
3209721645 99%RHA-I
Born 12/23/19 4/20 PTA +2837GTPI
+1599M +.06% +79F -.01% +47P
+703NMS\$ +5.7PL +.2DPR 2.83SCS
+1.29T +2.03UDC +.24FLC
+167FE +.8FI 8.5%SCE +703CMS
A1/A2

**Lots 36 thru 38 all housed at
Ru-Barb Farm, LaPorte, IN**

Sire of Lots 36 thru 38:

St Gen Dynasty Maroon-ET
3132353432 4/20 PTA +2772GTPI
+162M +.29% +88F +.11% +35P
+664NMS\$ +4.8PL +.2DPR 2.82SCS
+.91T +1.50UDC +.57FLC 77%R
Dynasty X GP-81 DOM Delta

Dam of Lots 36 thru 38:

BGP Frazzled Fairfax-ET
3147399221 4/20 PTA +2762GTPI
+2182M +56F +54P +645NMS
+6.3PL +1.32T +1.91UDC -.28FLC
1-11 238 18710 3.4 695 2.9 560 RIP
proj. 305ME 29240M
Sire: Melarry Josuper Frazzled-ET
(Pictured w/ Lot 35)
Mat. bro.: 734HO91 Yolo
***Sisters have sold for up to \$162,500**

2nd Dam: (Pictured w/ Lot 24)

View-Home Mrdian Iowa-ET
VG-86 VVV+V DOM
2-02 365 35670 3.8 1342 3.3 1166

3rd Dam: (Pictured w/ Lot 35)

Pine-Tree 2149Robst 4846-ET
VG-87 EEV+V DOM
2-04 365 32001 4.7 1520 3.4 1097
***Offspring have sold for up to
\$100,000**

****Tremendous genomic transmitter!!***

***8 sons in active AI including Mon-
terey, Powerball-P, Missouri, etc.**

4th Dam:

Pine-Tree Zenith Sheen
VG-87 VV+VV DOM
1-11 365 27883 3.9 1092 3.0 855

5th Dam:

Pine-Tree Martha Sheen-ET
VG-86 VV+VV DOM
1-11 365 31210 4.2 1305 3.1 968

6th Dam:

Pine-Tree Missy Martha-ET
VG-86 VVV+V DOM
2-02 365 34730 3.6 1266 3.1 1070

7th Dam:

Wesswood-HC Rudy Missy-ET
EX-92,3E EEEEE GMD-DOM
4-11 365 40880 4.1 1665 3.4 1385
Lifetime 119610 4.1 4885 3.4 4031
***Global Cow of the Year 2014**

8th Dam: Wesswood Elton Mimi

EX-90 EEEEE GMD-DOM
3-05 365 35380 3.3 1160 3.0 1054

9th Dam:

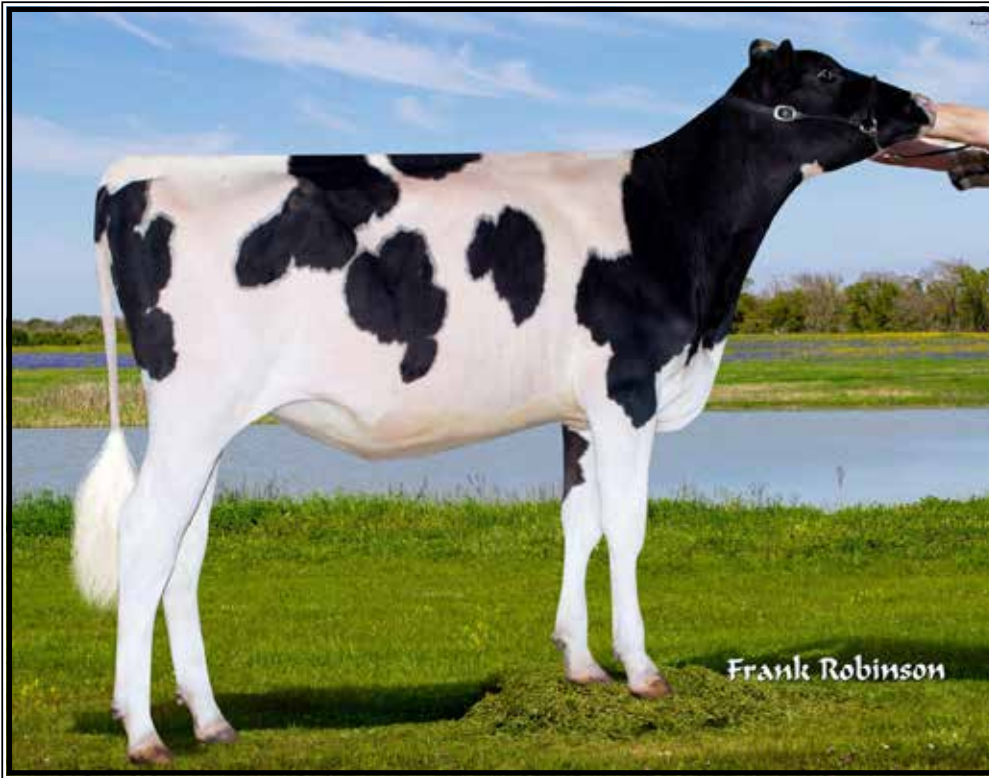
Wesswood Mandingo Ivy
VG-87 VEEVV
6-05 365 36330 3.6 1305 2.8 1018
Lifetime 144060 3.4 4933 2.9 4139

10th Dam:

Wesswood Astro Matt Ester
VG-87 VEVV GMD-DOM
6-08 365 31860 3.5 1125 2.9 921
Lifetime 140110 3.6 5029 3.0 4158

11th Dam:

Wesswood Bell Claudette
VG-87 GMD-DOM
8-04 365 38150 3.8 1443 2.8 1064
Lifetime 280980 3.6 9997 2.9 8092



BGP Big Bubba Havana-ET
(Dam of Lot 40)

LOT 40

BGP SLF Solution 19228-ET

3209480734 99%RHA-I
 Born 3/22/20 6/20 PTA +2854GTPI
 +1415M +.01% +56F +.03% +52P
 +738NM\$ +7.1PL +.7DPR 2.83SCS
 +1.28T +1.62UDC +1.36FLC
 +161FE +1.1FI 6.7%SCE +757CMS
A2/A2 AB

*Housed at Swisslane Farms, Alto, MI

Fustead S-S-I Solution-ET

3139490455 4/20 PTA +2889GTPI
 +1642M +.09% +89F +.00% +51P
 +782NM\$ +5.8PL -1.5DPR 2.67SCS
 +1.28T +1.23UDC +1.19FLC 79%R
 Frazzled X VG-85 DOM Rubicon

BGP Big Bubba Havana-ET

3147223864 4/20 PTA +2704GTPI
 +1317M +36F +48P +620NM\$ +5.8PL
 +1.9DPR +.76T +1.62UDC +.49FLC
 -Fresh in May

Sire: Leaninghouse Big Bubba-ET
 (Pictured above)

*Excellent IVF flush history and avg.
 10 transferable per cycle

2nd Dam of Lots 40 & 41:

BGP Modesty Havana
 GP-83 ++G++
 2-06 248 35000 4.4 1540 3.5 1225 RIP
 Mat. bro.: 734HO91 Yolo

3rd Dam: (Pictured w/ Lot 24)

View-Home Mrdian Iowa-ET
 VG-86 VVV+V DOM
 2-02 365 35670 3.8 1342 3.3 1166

4th Dam: (Pictured w/ Lot 35)

Pine-Tree 2149Robst 4846-ET
 VG-87 EEV+V DOM
 2-04 365 32001 4.7 1520 3.4 1097

*8 sons in active AI including Monterey

5th Dam: Pine-Tree Zenith Sheen

VG-87 VV+VV DOM
 1-11 365 27883 3.9 1092 3.0 855

6th Dam:

Pine-Tree Martha Sheen-ET
 VG-86 VV+VV DOM
 1-11 365 31210 4.2 1305 3.1 968

7th Dam:

Pine-Tree Missy Martha-ET
 VG-86 VVV+V DOM
 2-02 365 34730 3.6 1266 3.1 1070

8th Dam:

Wesswood-HC Rudy Missy-ET
 EX-92,3E EEEEE GMD-DOM
 4-11 365 40880 4.1 1665 3.4 1385
 Lifetime 119610 4.1 4885 3.4 4031
 *Global Cow of the Year 2014

9th Dam:

Wesswood Elton Mimi
 EX-90 EEEEE GMD-DOM
 3-05 365 35380 3.3 1160 3.0 1054

10th Dam:

Wesswood Mandingo Ivy
 VG-87 VEEVV
 6-05 365 36330 3.6 1305 2.8 1018
 Lifetime 144060 3.4 4933 2.9 4139

11th Dam:

Wesswood Astro Matt Ester
 VG-87 VEVV GMD-DOM
 6-08 365 31860 3.5 1125 2.9 921
 Lifetime 140110 3.6 5029 3.0 4158

12th Dam:

Wesswood Bell Claudette
 VG-87 GMD-DOM
 8-04 365 38150 3.8 1443 2.8 1064
 Lifetime 280980 3.6 9997 2.9 8092

LOT 41

BGP Solution Havana 1094-ET

3209721731 99%RHA-I
 Born 3/27/20 6/20 PTA +2808GTPI
 +1102M +.10% +72F +.04% +46P
 +708NM\$ +5.3PL +.1DPR 2.83SCS
 +1.05T +1.67UDC +.70FLC
 +175FE +.7FI 7.2%SCE
A1/A2 BB

*Housed at Ru-Barb Farm, LaPorte, IN

Fustead S-S-I Solution-ET

3139490455 4/20 PTA +2889GTPI
 +1642M +.09% +89F +.00% +51P
 +782NM\$ +5.8PL -1.5DPR 2.67SCS
 +1.28T +1.23UDC +1.19FLC 79%R
 Frazzled X VG-85 DOM Rubicon

BGP Jared Havana-ET

3200654227 4/20 PTA +2818GTPI
 +1081M +62F +51P +667NM\$ +4.6PL
 +2.0DPR +1.40T +1.87UDC +.25FLC
 Sire: Clear-Echo Jed Jared 745-ET



BGP Bandares Brayton-ET
(Dam of Lots 42 & 43)

LOT 42

BGP SLF Rome 19031-ET

3209480537 99%RHA-I
Born 12/10/19 4/20 PTA +2856GTPI
+1714M +.22% +90F +.05% +36P
+719NMS\$ +5.5PL +.8DPR 2.66SCS
+1.47T +1.44UDC -.12FLC
+179FE +1.5FI 9.1%SCE +750CMS

A2/A2

*Housed at Swisslane Farms, Alto, MI

LOT 43

BGP Rome Brayton 1085-ET

3209721722 99%RHA-I
Born 2/15/20 5/20 PTA +2810GTPI
+938M +.09% +62F +.03% +39P
+678NMS\$ +6.3PL +1.2DPR 2.64SCS
+1.49T +1.78UDC +.21FLC
+142FE +1.6FI 8.6%SCE

A2/A2

*Housed at Ru-Barb Farm, LaPorte, IN

De-Su Frazzld Rome 14192-ET

3141559586 4/20 PTA +2854GTPI
+1084M +.17% +92F +.04% +45P
+769NMS\$ +6.3PL +1.0DPR 2.53SCS
+.45T +.55UDC -.33FLC 79%R
Frazzled X GP-81 Yoder

BGP Bandares Brayton-ET

2-10 G-79 VG VFG 3144505819
4/20 PTA +2555GTPI +712M +31F
+24P +456NMS\$ +4.9PL +1.3DPR
+1.33T +1.74UDC +.27FLC
2-02 246 15422 4.2 646 3.3 512 RIP
-Bred back & due early Fall

Sire: Wa-Del Yoder Bandares-ET

(Pictured above)

*Candidate for much higher score!

Full bro.: 734HO91 Yolo

*Sisters have sold for up to \$162,500

2nd Dam: (Pictured w/ Lot 24)
View-Home Mrdian Iowa-ET
VG-86 VVV+V DOM

2-02 365 35670 3.8 1342 3.3 1166

3rd Dam: (Pictured w/ Lot 35)

Pine-Tree 2149Robst 4846-ET

VG-87 EEV+V DOM

2-04 365 32001 4.7 1520 3.4 1097

*Offspring have sold for up to \$100,000

**Tremendous genomic transmitter!!*

*8 sons in active AI including Monterey,

Powerball-P, Missouri and Cashflow

4th Dam:

Pine-Tree Zenith Sheen

VG-87 VV+VV DOM

1-11 365 27883 3.9 1092 3.0 855

5th Dam:

Pine-Tree Martha Sheen-ET

VG-86 VV+VV DOM

1-11 365 31210 4.2 1305 3.1 968

6th Dam: Pine-Tree Missy Martha-ET

VG-86 VVV+V DOM

2-02 365 34730 3.6 1266 3.1 1070

7th Dam:

Wesswood-HC Rudy Missy-ET

EX-92,3E EEEEE GMD-DOM

4-11 365 40880 4.1 1665 3.4 1385

Lifetime 119610 4.1 4885 3.4 4031

**Global Cow of the Year 2014*

8th Dam: Wesswood Elton Mimi

EX-90 EEEEE GMD-DOM

3-05 365 35380 3.3 1160 3.0 1054

9th Dam: Wesswood Mandingo Ivy

VG-87 VEEVV

6-05 365 36330 3.6 1305 2.8 1018

Lifetime 144060 3.4 4933 2.9 4139

10th Dam: Wesswood Astro Matt Ester

VG-87 VEVV GMD-DOM

6-08 365 31860 3.5 1125 2.9 921

Lifetime 140110 3.6 5029 3.0 4158

11th Dam: Wesswood Bell Claudette

VG-87 GMD-DOM

8-04 365 38150 3.8 1443 2.8 1064

Lifetime 280980 3.6 9997 2.9 8092



BGP Frazzled Fonda-ET

proj. 305ME 37740M
(Dam of Lots 44 & 45)

LOT 44

BGP SLF Solution 19042-ET

3209480548 99%RHA-I
Born 12/12/19 4/20 PTA +2846GTPI
+1338M +.13% +89F +.02% +47P
+766NMS +5.5PL -.2DPR 2.72SCS
+.90T +1.08UDC -.09FLC
+194FE +.7FI 6.8%SCE +783CMS

A2/A2 +1021DWPS

*Housed at Swisslane Farms, Alto, MI

LOT 45

BGP Solution Fonda 1030-ET

3209721667 99%RHA-I
Born 1/5/20 4/20 PTA +2831GTPI
+2104M -.02% +74F -.04% +52P
+704NMS +4.9PL -1.4DPR 2.82SCS
+1.63T +2.02UDC +.90FLC
+172FE -.4FI 7.5%SCE +691CMS

A2/A2

*Housed at Ru-Barb Farm, LaPorte, IN

Fustead S-S-I Solution-ET

3139490455 4/20 PTA +2889GTPI
+1642M +.09% +89F +.00% +51P
+782NMS +5.8PL -1.5DPR 2.67SCS
+1.28T +1.23UDC +1.19FLC 79%R
Frazzled X VG-85 DOM Rubicon

BGP Frazzled Fonda-ET

3145398983 4/20 PTA +2715GTPI
+2059M +67F +50P +649NMS +5.1PL
+1.07T +1.46UDC -.36FLC 2.79SCS
1-11 283 24590 3.9 899 3.4 747 RIP
proj. 305ME 37740M

Sire: Melarry Josuper Frazzled-ET
(Pictured above)

Mat. bro.: 734HO91 Yolo

*Sisters have sold for up to \$162,500

2nd Dam: (Pictured w/ Lot 24)
View-Home Mrdian Iowa-ET
VG-86 VVV+V DOM

2-02 365 35670 3.8 1342 3.3 1166

3rd Dam: (Pictured w/ Lot 35)
Pine-Tree 2149Robst 4846-ET

VG-87 EEV+V DOM

2-04 365 32001 4.7 1520 3.4 1097

*Offspring have sold for up to \$100,000

**Tremendous genomic transmitter!!*

*8 sons in active AI including Monterey,
Powerball-P, Missouri and Cashflow

4th Dam:

Pine-Tree Zenith Sheen

VG-87 VV+VV DOM

1-11 365 27883 3.9 1092 3.0 855

5th Dam:

Pine-Tree Martha Sheen-ET

VG-86 VV+VV DOM

1-11 365 31210 4.2 1305 3.1 968

6th Dam: Pine-Tree Missy Martha-ET

VG-86 VVV+V DOM

2-02 365 34730 3.6 1266 3.1 1070

7th Dam:

Wesswood-HC Rudy Missy-ET

EX-92,3E EEEEE GMD-DOM

4-11 365 40880 4.1 1665 3.4 1385

Lifetime 119610 4.1 4885 3.4 4031

**Global Cow of the Year 2014*

8th Dam: Wesswood Elton Mimi

EX-90 EEEEE GMD-DOM

3-05 365 35380 3.3 1160 3.0 1054

9th Dam: Wesswood Mandingo Ivy

VG-87 VEEVV

6-05 365 36330 3.6 1305 2.8 1018

Lifetime 144060 3.4 4933 2.9 4139

10th Dam: Wesswood Astro Matt Ester

VG-87 VEVV GMD-DOM

6-08 365 31860 3.5 1125 2.9 921

Lifetime 140110 3.6 5029 3.0 4158

11th Dam: Wesswood Bell Claudette

VG-87 GMD-DOM

8-04 365 38150 3.8 1443 2.8 1064

Lifetime 280980 3.6 9997 2.9 8092

BGP Frazzled Farmington-ET

proj 305ME 39870M
(Dam of Lots 46-49)



LOT 46

BGP SLF Solution 19046-ET

3209480552 99%RHA-I
Born 12/13/19 4/20 PTA +2849GTPI
+1942M +.05% +91F -.02% +53P
+786NMS +5.7PL -1.4DPR 2.72SCS
+1.05T +1.28UDC +.05FLC
+206FE -.6FI 7.2%SCE +784CMS

A2/A2 +1048DWPS

LOT 47

BGP SLF Solution 19035-ET

32094805541 99%RHA-I
Born 12/10/19 4/20 PTA +2828GTPI
+1655M +.01% +66F -.05% +36P
+754NMS +7.2PL +.7DPR 2.67SCS
+1.08T +1.61UDC +.95FLC
+135FE +1.2FI 6.4%SCE +740CMS

A2/A2 +973DWPS

LOT 48

BGP SLF Solution 19051-ET

3209480557 99%RHA-I
Born 12/15/19 4/20 PTA +2824GTPI
+1530M +.09% +85F +.03% +55P
+755NMS +5.5PL -1.6DPR 2.58SCS
+.67T +1.01UDC +.06FLC
+207FE -.6FI 7.7%SCE +779CMS

A2/A2 +1082DWPS

LOT 49

BGP SLF Rome 19000-ET

3209480506 99%RHA-I
Born 11/28/19 4/20 PTA +2834GTPI
+1219M +.08% +69F +.03% +47P
+718NMS +6.2PL +.9DPR 2.58SCS
+1.13T +1.12UDC -.02FLC
+169FE +1.4FI 9.0%SCE +718CMS

A2/A2 +1037DWPS

Sire of Lots 46, 47 & 48:

Fustead S-S-I Solution-ET

3139490455 4/20 PTA +2889GTPI
+1642M +.09% +89F +.00% +51P
+782NMS +5.8PL -1.5DPR 2.67SCS
+1.28T +1.23UDC +1.19FLC 79%R
Frazzled X VG-85 DOM Rubicon

Sire of Lot 49:

De-Su Frazzld Rome 14192-ET

3141559586 4/20 PTA +2854GTPI
+1084M +.17% +92F +.04% +45P
+769NMS +6.3PL +1.0DPR 2.53SCS
+.45T +.55UDC -.33FLC 79%R
Frazzled X GP-81 Yoder

Dam of Lots 46-49:

BGP Frazzled Farmington-ET

3145398973 4/20 PTA +2764GTPI
+2063M -.06% +61F -.02% +57P
+674NMS +5.7PL -.3DPR 2.74SCS
+.65T +1.35UDC -.35FLC +673CMS
2-02 236 24050 3.8 916 3.3 755 RIP
proj 305ME 39870M

Sire: Melarry Josuper Frazzled-ET
(Pictured above)

Mat. bro.: 734HO91 Yolo

*Sisters have sold for up to \$162,500

2nd Dam: (Pictured w/ Lot 24)

View-Home Mrdian Iowa-ET

VG-86 VVV+V DOM

2-02 365 35670 3.8 1342 3.3 1166

3rd Dam: (Pictured w/ Lot 35)

Pine-Tree 2149Robst 4846-ET

VG-87 EEV+V DOM

2-04 365 32001 4.7 1520 3.4 1097

*Offspring have sold for up to \$100,000

**Tremendous genomic transmitter!!*

*8 sons in active AI including Monterey, Powerball-P, Missouri and Cashflow

4th Dam:

Pine-Tree Zenith Sheen

VG-87 VV+VV DOM

1-11 365 27883 3.9 1092 3.0 855

5th Dam:

Pine-Tree Martha Sheen-ET

VG-86 VV+VV DOM

1-11 365 31210 4.2 1305 3.1 968

6th Dam:

Pine-Tree Missy Martha-ET

VG-86 VVV+V DOM

2-02 365 34730 3.6 1266 3.1 1070

7th Dam:

Wesswood-HC Rudy Missy-ET

EX-92,3E EEEEE GMD-DOM

4-11 365 40880 4.1 1665 3.4 1385

Lifetime 119610 4.1 4885 3.4 4031

**Global Cow of the Year 2014*

8th Dam:

Wesswood Elton Mimi

EX-90 EEEEE GMD-DOM

3-05 365 35380 3.3 1160 3.0 1054

9th Dam:

Wesswood Mandingo Ivy

VG-87 VEEVV

6-05 365 36330 3.6 1305 2.8 1018

Lifetime 144060 3.4 4933 2.9 4139

10th Dam:

Wesswood Astro Matt Ester

VG-87 VEVV GMD-DOM

6-08 365 31860 3.5 1125 2.9 921

Lifetime 140110 3.6 5029 3.0 4158

11th Dam:

Wesswood Bell Claudette

VG-87 GMD-DOM

8-04 365 38150 3.8 1443 2.8 1064

Lifetime 280980 3.6 9997 2.9 8092

*Lots 46 thru 49 all Housed at
Swisslane Farms, Alto, MI



BGP Bandares Berkley-ET
(Dam of Lot 50)

LOT 50

BGP SLF Solution 19106-ET

3209480612 99%RHA-I
Born 1/8/20 4/20 PTA +2825GTPI
+1163M +.09% +72F +.02% +41P
+688NM\$ +5.6PL +.2DPR 2.77SCS
+2.75T +1.90UDC +.48FLC
+159FE +.9FI 8.3%SCE +703CMS\$

A2/A2 AB

*Housed at Swisslane Farms, Alto, MI

Fustead S-S-I Solution-ET

3139490455 12/19 PTA +2818GTPI
+2002M +.10% +105F +.01% +65P
+1007NM\$ +7.4PL -.9DPR 2.58SCS
+2.01T +2.06UDC +1.70FLC 78%R
Frazzled X VG-85 DOM Rubicon

BGP Bandares Berkley-ET

3145398964 4/20 PTA +2596GTPI
+535M +31F +26P +472NM\$ +5.0PL
+1.4DPR +1.63T +2.09UDC +.17FLC
Sire: Wa-Del Yoder Bandares-ET
(Pictured above)

2nd Dam: (Pictured w/ Lot 24)
View-Home Mrdian Iowa-ET
VG-86 VVV+V DOM

2-02 365 35670 3.8 1342 3.3 1166

3rd Dam: (Pictured w/ Lot 35)

Pine-Tree 2149Robst 4846-ET

VG-87 EEV+V DOM

2-04 365 32001 4.7 1520 3.4 1097

*Offspring have sold for up to \$100,000

*Tremendous genomic transmitter!!

*8 sons in active AI including Monterey,
Powerball-P, Missouri and Cashflow

4th Dam:

Pine-Tree Zenith Sheen

VG-87 VV+VV DOM

1-11 365 27883 3.9 1092 3.0 855

5th Dam:

Pine-Tree Martha Sheen-ET

VG-86 VV+VV DOM

1-11 365 31210 4.2 1305 3.1 968

6th Dam: Pine-Tree Missy Martha-ET

VG-86 VVV+V DOM

2-02 365 34730 3.6 1266 3.1 1070

7th Dam:

Wesswood-HC Rudy Missy-ET

EX-92,3E EEEEE GMD-DOM

4-11 365 40880 4.1 1665 3.4 1385

Lifetime 119610 4.1 4885 3.4 4031

*Global Cow of the Year 2014

8th Dam: Wesswood Elton Mimi

EX-90 EEEEE GMD-DOM

3-05 365 35380 3.3 1160 3.0 1054

9th Dam: Wesswood Mandingo Ivy

VG-87 VEEVV

6-05 365 36330 3.6 1305 2.8 1018

Lifetime 144060 3.4 4933 2.9 4139

10th Dam: Wesswood Astro Matt Ester

VG-87 VEVV GMD-DOM

6-08 365 31860 3.5 1125 2.9 921

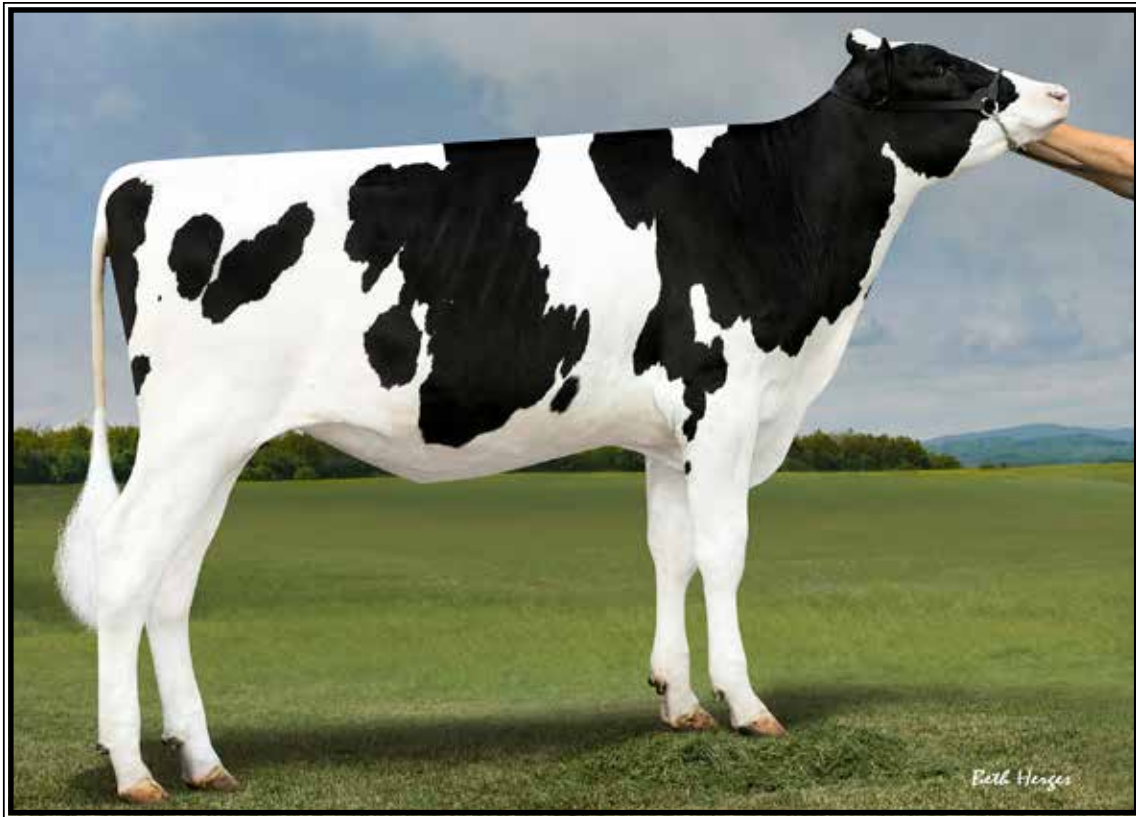
Lifetime 140110 3.6 5029 3.0 4158

11th Dam: Wesswood Bell Claudette

VG-87 GMD-DOM

8-04 365 38150 3.8 1443 2.8 1064

Lifetime 280980 3.6 9997 2.9 8092



BGP Frazzled Fontanelle-ET

2-00 283 25800 3.7 1014 3.2 782 RIP

(Dam of Lots 51 & 52)

LOT 51

BGP Riveting Ftn 1077-ET

32097217174 99%RHA-I
Born 2/1/20 4/20 PTA +2826GTPI
+1447M +.05% +70F +.01% +49P
+696NMS +5.8PL +2DPR 2.63SCS
+1.22T +1.32UDC +.45FLC
+173FE +1.0FI 8.4%SCE +714CMS

A2/A2

LOT 52

BGP Poncho Fontelle 1010-ET

3209721647 99%RHA-I
Born 12/23/19 4/20 PTA +2814GTPI
+1779M +.02% +75F -.02% +48P
+659NMS +4.3PL -.6DPR 2.90SCS
+1.72T +2.20UDC +.47FLC
+172FE +.4FI 8.4%SCE +653CMS

A1/A2

Lots 51 & 52 housed at
Ru-Barb Farm, LaPorte, IN

Sire of Lot 51:

S-S-I BG Frazzld Riveting-ET
3133120549 4/20 PTA +2828GTPI
+738M +.08% +50F +.04% +33P
+681NMS +7.2PL +1.7DPR 2.50SCS
+1.20T +1.92UDC +.69FLC 79%R
Frazzled X VG-87 Profit

Sire of Lot 52:

ST Gen Noble Poncho
3132353459 4/20 PTA +2842GTPI
+1096M +.03% +52F +.02% +41P
+677NMS +6.6PL +2.7DPR 2.66SCS
+1.53T +2.17UDC +.55FLC 76%R
Noble X Profit

Dam of Lots 51 & 52:

BGP Frazzled Fontanelle-ET
3144506037 4/20 PTA +2690GTPI
+2392M +69F +56P +596NMS +3.7PL
+1.14T +1.35UDC -.29FLC
2-00 283 25800 3.7 1014 3.2 782 RIP
proj. 305ME 35260M
Sire: Melarry Josuper Frazzled-ET
(Pictured above)

Mat. bro.: 734HO91 Yolo

*Sisters have sold for up to \$162,500

2nd Dam: (Pictured w/ Lot 24)

View-Home Mrdian Iowa-ET
VG-86 VVV+V DOM

2-02 365 35670 3.8 1342 3.3 1166

3rd Dam: (Pictured w/ Lot 35)

Pine-Tree 2149Robst 4846-ET

VG-87 EEV+V DOM

2-04 365 32001 4.7 1520 3.4 1097

*Offspring have sold for up to \$100,000

**Tremendous genomic transmitter!!*

*8 sons in active AI including Monterey,

Powerball-P, Missouri and Cashflow

4th Dam:

Pine-Tree Zenith Sheen

VG-87 VV+VV DOM

1-11 365 27883 3.9 1092 3.0 855

5th Dam:

Pine-Tree Martha Sheen-ET

VG-86 VV+VV DOM

1-11 365 31210 4.2 1305 3.1 968

6th Dam: Pine-Tree Missy Martha-ET

VG-86 VVV+V DOM

2-02 365 34730 3.6 1266 3.1 1070

7th Dam:

Wesswood-HC Rudy Missy-ET

EX-92,3E EEEEE GMD-DOM

4-11 365 40880 4.1 1665 3.4 1385

Lifetime 119610 4.1 4885 3.4 4031

**Global Cow of the Year 2014*

8th Dam: Wesswood Elton Mimi

EX-90 EEEEE GMD-DOM

3-05 365 35380 3.3 1160 3.0 1054

9th Dam: Wesswood Mandingo Ivy

VG-87 VEEVV

6-05 365 36330 3.6 1305 2.8 1018

Lifetime 144060 3.4 4933 2.9 4139

10th Dam: Wesswood Astro Matt Ester

VG-87 VEVV GMD-DOM

6-08 365 31860 3.5 1125 2.9 921

Lifetime 140110 3.6 5029 3.0 4158

11th Dam: Wesswood Bell Claudette

VG-87 GMD-DOM

8-04 365 38150 3.8 1443 2.8 1064

Lifetime 280980 3.6 9997 2.9 8092



BGP Frazzled Fayette-ET

1-11 333 28370 3.6 999 2.9 852 RIP

(Dam of Lot 53)

LOT 53

BGP Maroon Fayette 1006-ET

3209721643 99%RHA-I HH1
Born 12/23/19 4/20 PTA +2811GTPI
+1149M +.07% +65F +.05% +50P
+652NMS +5.4PL +.1DPR 2.86SCS
+1.63T +2.00UDC +.26FLC
+160FE +.7FI 9.8%SCE +679CMS

A2/A2 AB

St Gen Dynasty Maroon-ET

3132353432 4/20 PTA +2772GTPI
+162M +.29% +88F +.11% +35P
+664NMS +4.8PL +.2DPR 2.82SCS
+.91T +1.50UDC +.57FLC 77%R
Dynasty X GP-81 DOM Delta

BGP Frazzled Fayette-ET

3145398972 4/20 PTA +2722GTPI
+2172M +66F +49P +629NMS +4.7PL
+1.63T +1.88UDC +.03FLC
1-11 333 28370 3.6 999 2.9 852 RIP
proj. 305ME 33960M

Sire: Melarry Josuper Frazzled-ET
(Pictured above)

2nd Dam: (Pictured w/ Lot 24)

View-Home Mrdian Iowa-ET
VG-86 VVV+V DOM
2-02 365 35670 3.8 1342 3.3 1166

3rd Dam: (Pictured w/ Lot 35)
Pine-Tree 2149Robst 4846-ET
VG-87 EEV+V DOM
2-04 365 32001 4.7 1520 3.4 1097

***Offspring have sold for up to \$100,000**
***Tremendous genomic transmitter!!**
***8 sons in active AI including Monterey, Powerball-P, Missouri and Cashflow**

4th Dam:

Pine-Tree Zenith Sheen
VG-87 VV+VV DOM
1-11 365 27883 3.9 1092 3.0 855

5th Dam:

Pine-Tree Martha Sheen-ET
VG-86 VV+VV DOM
1-11 365 31210 4.2 1305 3.1 968

6th Dam: Pine-Tree Missy Martha-ET
VG-86 VVV+V DOM
2-02 365 34730 3.6 1266 3.1 1070

7th Dam:

Wesswood-HC Rudy Missy-ET
EX-92,3E EEEEE GMD-DOM
4-11 365 40880 4.1 1665 3.4 1385
Lifetime 119610 4.1 4885 3.4 4031
***Global Cow of the Year 2014**

8th Dam: Wesswood Elton Mimi
EX-90 EEEEE GMD-DOM
3-05 365 35380 3.3 1160 3.0 1054

9th Dam: Wesswood Mandingo Ivy
VG-87 VEEVV
6-05 365 36330 3.6 1305 2.8 1018
Lifetime 144060 3.4 4933 2.9 4139

10th Dam: Wesswood Astro Matt Ester
VG-87 VEEVV GMD-DOM
6-08 365 31860 3.5 1125 2.9 921
Lifetime 140110 3.6 5029 3.0 4158

11th Dam: Wesswood Bell Claudette
VG-87 GMD-DOM
8-04 365 38150 3.8 1443 2.8 1064
Lifetime 280980 3.6 9997 2.9 8092



View-Home Mrdian Iowa-ET VG-86 UUU+U DOM

2-02 365 35670 3.8 1342 3.3 1166
(Descendants sell as Lots 24-54)

LOT 54

BGP SLF Solution 18999-ET

3209480505 99%RHA-I
Born 11/27/19 4/20 PTA +2817GTPI
+1920M +.02% +80F -.03% +52P
+739NM\$ +5.7PL -1.1DPR 2.60SCS
+.93T +1.25UDC -.08FLC
+184FE -.2FI 7.7%SCE +739CM\$

A1/A2 +914DWPS

*Housed at Swisslane Farms, Alto, MI

Fustead S-S-I Solution-ET

3139490455 12/19 PTA +2818GTPI
+2002M +.10% +105F +.01% +65P
+1007NM\$ +7.4PL -.9DPR 2.58SCS
+2.01T +2.06UDC +1.70FLC 78%R
Frazzled X VG-85 DOM Rubicon

BGP Flag Independence-ET

3140986150 4/20 PTA +2655GTPI
+1112M +71F +31P +616NM\$ +4.1PL
+1.1DPR +.58T +1.37UDC
2-05 258 22060 5.0 966 3.5 646 RIP
proj. 305ME 28940M
Sire: S-S-I 1stclass Flagship-ET

2nd Dam: (Pictured above)
View-Home Mrdian Iowa-ET
VG-86 VVV+V DOM
2-02 365 35670 3.8 1342 3.3 1166

3rd Dam: (Pictured w/ Lot 35)
Pine-Tree 2149Robst 4846-ET
VG-87 EEV+V DOM
2-04 365 32001 4.7 1520 3.4 1097

***Offspring have sold for up to \$100,000**
***Tremendous genomic transmitter!!**
***8 sons in active AI including Monterey,**
Powerball-P, Missouri and Cashflow

4th Dam:
Pine-Tree Zenith Sheen
VG-87 VV+VV DOM
1-11 365 27883 3.9 1092 3.0 855

5th Dam:
Pine-Tree Martha Sheen-ET
VG-86 VV+VV DOM
1-11 365 31210 4.2 1305 3.1 968

6th Dam: Pine-Tree Missy Martha-ET
VG-86 VVV+V DOM
2-02 365 34730 3.6 1266 3.1 1070

7th Dam:
Wesswood-HC Rudy Missy-ET
EX-92,3E EEEEE GMD-DOM
4-11 365 40880 4.1 1665 3.4 1385
Lifetime 119610 4.1 4885 3.4 4031
***Global Cow of the Year 2014**

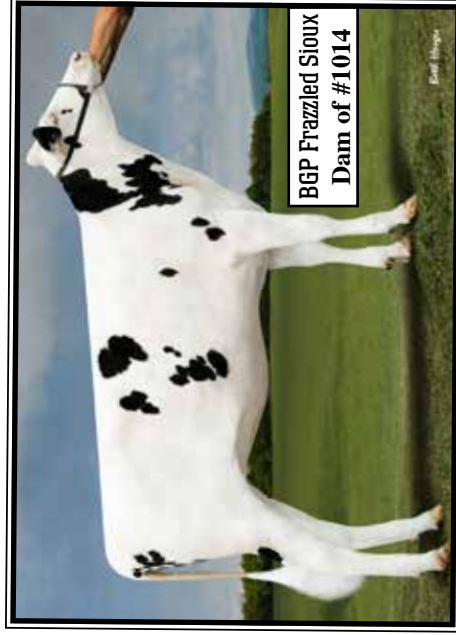
8th Dam: Wesswood Elton Mimi
EX-90 EEEEE GMD-DOM
3-05 365 35380 3.3 1160 3.0 1054

9th Dam: Wesswood Mandingo Ivy
VG-87 VEEVV
6-05 365 36330 3.6 1305 2.8 1018
Lifetime 144060 3.4 4933 2.9 4139

10th Dam: Wesswood Astro Matt Ester
VG-87 VEVV GMD-DOM
6-08 365 31860 3.5 1125 2.9 921
Lifetime 140110 3.6 5029 3.0 4158

11th Dam: Wesswood Bell Claudette
VG-87 GMD-DOM
8-04 365 38150 3.8 1443 2.8 1064
Lifetime 280980 3.6 9997 2.9 8092

Lots 55 thru 65 are all group lots of 4 or 5 head of genomic heifers



LOT 55 (Group Lot of 5 head)

*Housed at Ru-Barb Holsteins - Laporte, IN

HMID	Reg #	Dam	DOB	GTPI	NM\$	Milk	Fat%	Fat	Pro. %	Prot.	SCS	PL	DPR	Type	UDC	FLC
1014	3209721651	Maroon X BGP FRAZZLED SIOUX-ET	12/22/19	2777	678	785	0.16	77	0.02	30	2.6	5.7	0.1	1.18	1.88	0.54
1048	3209721685	Rome X TRIPLECROWN DELTA 26-ET	1/15/20	2776	659	1305	0.11	83	0.02	47	2.68	5.2	-0.8	1.06	1.18	-0.14
1016	3209721653	Maroon X BGP FRAZZLED FAYETTE-ET	12/22/19	2776	683	998	0.12	73	0	31	2.66	6.3	-0.2	1.29	2.14	0.48
1011	3209721648	Rome X BGP DELTA HEAVEN-ET	12/23/19	2775	675	239	0.25	79	0.07	27	2.67	6.2	1.2	1.36	1.5	0.4
1036	3209721673	Rome X BGP FRAZZLED FONTANELLE-ET	1/5/20	2772	690	1765	0.05	82	-0.01	53	2.62	5.6	-0.5	0.61	0.57	-0.34
		Parent averages		2775	677	1018		79		38						



LOT 56 (Group Lot of 5 head)

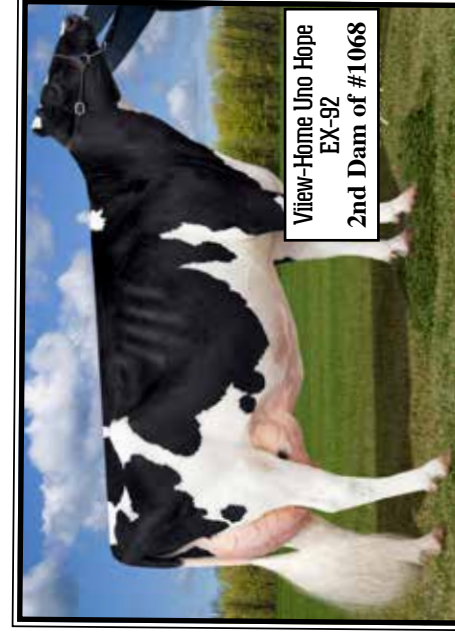
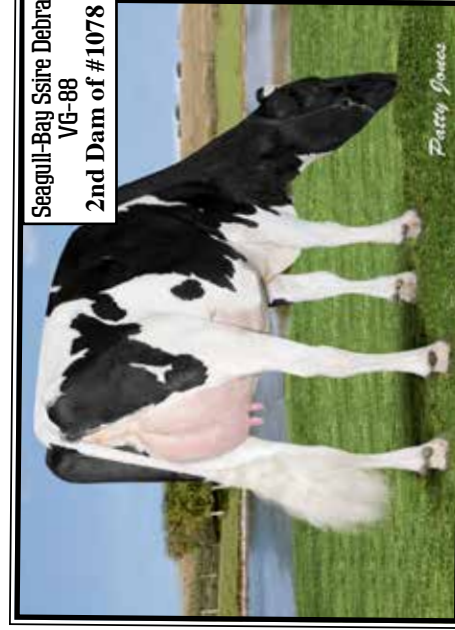
*Housed at Ru-Barb Holsteins - Laporte, IN

HMID	Reg#	Dam	DOB	GTPI	NM\$	Milk	Fat%	Fat	Pro.%	Prot.	SCS	PL	DPR	Type	UDC	FLC
1027	3209721664	Solution X BGP FRAZZLED FONDA-ET	1/5/20	2768	683	1813	0.07	90	-0.02	50	2.83	3.9	-3.1	1.63	1.36	0.82
1003	3209721640	RomeX BGP RUB HUI-ET	12/20/19	2767	644	1083	0.16	88	0.08	58	2.86	3.3	-0.6	0.92	0.6	0.36
1034	3209721671	RomeX BGP FRAZZLED FONTANELLE-ET	1/5/20	2764	684	1845	0.03	81	-0.01	54	2.72	5.2	0.4	0.45	0.59	-0.97
1063	3209721700	Poncho X BGP DELTA HARMONY-ET	1/24/20	2760	610	457	0.1	46	0.05	29	2.77	6.4	2.4	1.64	2.14	0.67
1038	3209721675	Solution X BGP FRAZZLED FONDA-ET	1/5/20	2760	683	2012	-0.01	74	-0.03	54	2.88	4.7	-1.1	1.14	1.04	0.14
		Parent averages		2764	661	1442		76		49						

LOT 57 (Group Lot of 5 head)

*Housed at Ru-Barb Holsteins - Laporte, IN

HMID	Reg#	Dam	DOB	GTPI	NM\$	Milk	Fat%	Fat	Pro.%	Prot.	SCS	PL	DPR	Type	UDC	FLC
1020	3209721657	Maroon X BGP FRAZZLED FAIRFAX-ET	12/28/19	2754	664	1030	0.06	58	0.03	42	2.68	6.8	0.3	0.87	1.64	0.16
1075	3209721712	Riveting X LANGS-TWIN-ELIM B ALABAMA-E	2/1/20	2752	670	584	0.16	68	0.06	35	2.67	5.4	0.5	0.85	1.55	-0.17
1084	3209721721	RomeX BGP BANDARES BRAYTON-ET	2/15/20	2751	672	440	0.22	80	0.06	32	2.73	5.3	0.6	0.84	1.06	0.07
1041	3209721678	RomeX BGP DELTA HEAVEN-ET	1/7/20	2745	707	413	0.25	87	0.07	32	2.74	6.1	0.6	0.69	1	-0.41
1035	3209721672	RomeX BGP FRAZZLED FONTANELLE-ET	1/5/20	2745	662	1015	0.14	80	0.02	36	2.71	5.3	-0.1	1	1.17	0.13
		Group averages		2749	675	696		75		35						

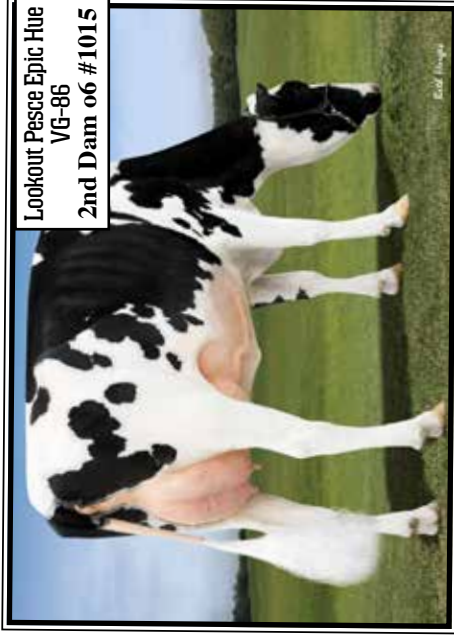


LOT 58 (Group Lot of 4 head) *Housed at Ru-Barb Holsteins - Laporte, IN

HMID	Reg#	Dam	DOB	GTP1	NM\$	Milk	Fat%	Fat	Pro. %	Prot.	SCS	PL
1068	3209721705	Solution X BGP DELTA HARMONY-ET	1/25/20	2743	616	405	0.14	55	0.05	27	2.74	6.1
1012	3209721649	Maroon X BGP FRAZZLED FAIRFAX-ET	12/23/19	2743	648	813	0.19	85	0.04	37	2.81	4.7
1043	3209721680	Rome X TRIPLECROWN DELTA 26-ET	1/13/20	2740	642	788	0.14	70	0.05	38	2.63	5.7
1078	3209721715	Solution X BGP MAGICTOUCH MIIMI-ET	2/6/20	2732	607	632	0.13	62	0.06	38	2.77	5.1
		Group averages		2740	638	697		70		36		

LOT 59 (Group Lot of 4 head) *Housed at Ru-Barb Holsteins - Laporte, IN

HMID	Reg#	Dam	DOB	GTP1	NM\$	Milk	Fat%	Fat	Pro. %	Prot.	SCS	PL	UDC	FLC
1046	3209721683	Rome X BGP FRAZZLED FREDERIKA-ET	1/13/20	2729	686	1897	-0.02	66	-0.02	52	2.55	6.3	0.46	-0.57
1097	3209721734	Solution X BGP RESOLVE HAPPINESS-ET	4/11/20	2726	685	912	0.18	87	0.02	35	2.85	4.6	1.23	0.51
1042	3209721679	Poncho X BGP DELTA HARMONY-ET	1/9/20	2722	596	570	0.11	52	0.05	32	2.81	5.3	2.08	0.7
1044	3209721681	Rome X BGP FRAZZLED FREDERIKA-ET	1/13/20	2720	675	1099	0.13	80	0.03	44	2.52	5.5	0.58	-0.5
		Group averages		2724	661	1120		71		41				



LOT 60 (Group Lot of 4 head)

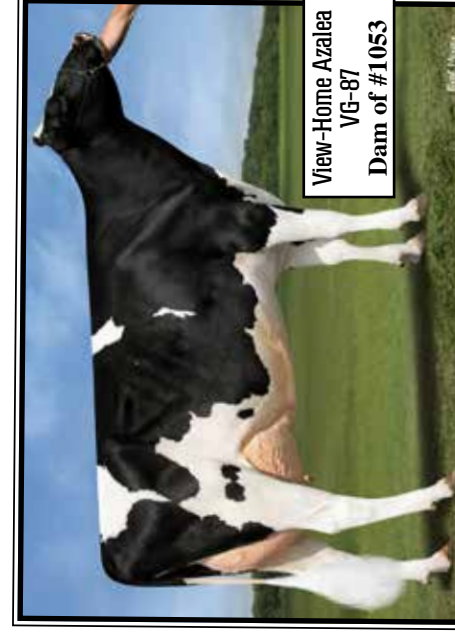
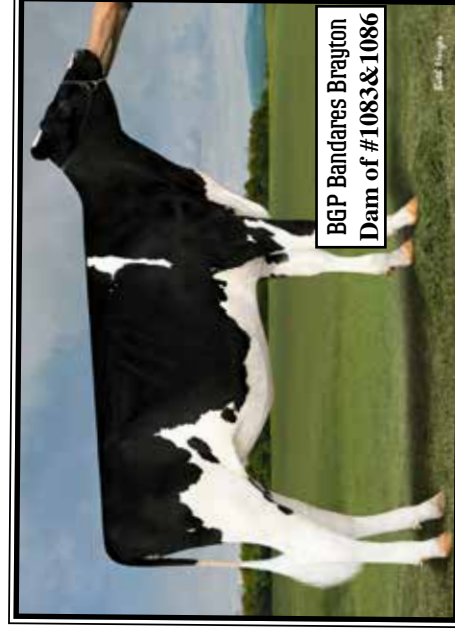
*Housed at Ru-Barb Holsteins - Laporte, IN

HMID	Reg#	Dam	DOB	GTPI	NM\$	Milk	Fat%	Fat	Pro.%	Prot.	SCS	PL	DPR	Type	UDC	FLC
1079	3209721716	Solution X BGP MAGICTOUCH MIMI-ET	2/6/20	2719	619	1134	0.09	70	0.01	37	2.73	5.3	-0.3	1.06	1.34	0.9
1072	3209721709	Solution X BGP MAGICTOUCH MIMI-ET	2/1/20	2718	602	1270	0.06	65	0.01	43	2.78	4.7	-0.1	1.3	1.17	0.82
1050	3209721687	Rome X TRIPLECROWN DELTA 26-ET	1/19/20	2718	651	1644	0.05	79	-0.01	49	2.77	4.9	-2.5	1.05	1.41	0.14
1015	3209721652	Rome X BGP RUB HUI-ET	12/22/19	2715	624	1343	0.09	79	0.04	53	2.88	4.2	-0.6	1.08	0.29	0.55
		Group averages		2718	624	1348		73		46						

LOT 61 (Group Lot of 4 head)

*Housed in Clinton, Arkansas

HMID	Reg#	Dam	DOB	GTPI	NM\$	Milk	Fat%	Fat	Pro.%	Prot.	SCS	PL	DPR	Type	UDC	FLC
1033	3209721670	Solution X BGP FRAZZLED FONDA-ET	1/5/20	2746	686	2339	-0.08	65	-0.06	53	2.87	6.2	-1.7	1.23	1.52	0.48
1025	3209721662	Rome X BGP FRAZZLED FREDERIKA-ET	1/4/20	2712	645	1839	-0.01	69	-0.02	50	2.64	5.4	-1.2	0.55	0.97	0.29
1028	3209721665	Rome X BGP FRAZZLED FARMINGTON-ET	1/5/20	2711	676	2168	-0.03	74	-0.02	61	2.69	4.8	-1.4	0.47	0.44	-0.87
1031	3209721668	olution X LANGS-TWIN-ELM BALABAMA-E	1/5/20	2699	618	1085	0.09	69	0.01	38	2.7	5.2	-0.7	1.29	1.04	0.65
		Group averages		2717	656	1858		69		51						



LOT 62 (Group Lot of 5 head)

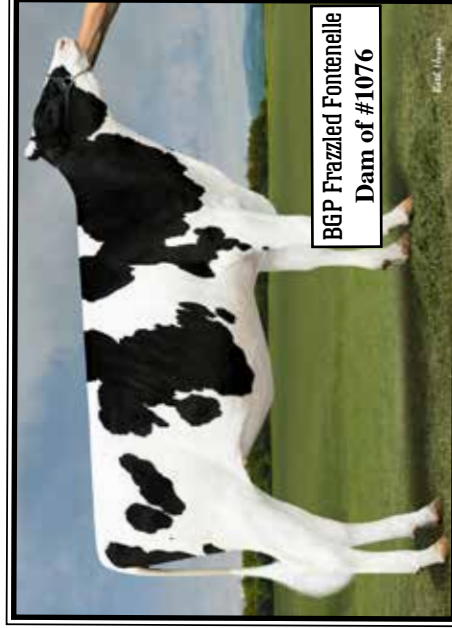
*Housed at Ru-Barb Holsteins - Laporte, IN

HIMID	Reg#	Dam	DOB	GTPI	NM\$	Milk	Fat%	Fat	Pro.%	Prot.	SCS	PL	DPR	Type	UDC	FLC
1070	3209721707	Solution X PINE-TREE 12922 PON 7942-ET	2/1/20	2703	619	2190	-0.01	81	-0.05	53	3.01	2.9	-2.4	1.28	1.32	0.83
1083	3209721720	Brome X GP BANDARES BRAYTON-ET	2/16/20	2697	630	718	0.16	74	0.02	29	2.66	5.5	1	0.62	0.86	-0.48
1053	3209721690	Rome X VIEW-HOME AZALEA-ET	1/20/20	2692	611	662	0.11	58	0.05	36	2.66	5.8	0.9	0.78	1.07	0.23
1007	3209721644	Maroon X BGP FRAZZLED FONTANELLE-ET	12/23/19	2692	627	1382	0.08	76	0	43	2.9	4.6	-0.7	0.69	1.45	0.01
1004	3209721641	Rome X BGP MODESTY IOWA CITY-ET	12/20/19	2692	617	1067	0.07	61	0.01	35	2.89	5.4	0.6	0.87	1.78	0.51
		Group averages		2695	621	1204		70		39						

LOT 63 (Group Lot of 5 head)

*Housed at Ru-Barb Holsteins - Laporte, IN

HIMID	Reg#	Dam	DOB	GTPI	NM\$	Milk	Fat%	Fat	Pro.%	Prot.	SCS	PL	DPR	Type	UDC	FLC
1047	3209721684	Rome X VIEW-HOME AZALEA-ET	1/13/20	2690	607	1102	0.07	63	0.04	45	2.71	4.6	0.2	0.69	0.81	0.11
1067	3209721704	Solution X BGP DELTA HARMONY-ET	1/25/20	2689	574	543	0.11	53	0.02	23	2.78	5.3	0.7	1.74	2.24	1.19
1026	3209721663	Rome X BGP FRAZZLED FARMINGTON-ET	1/5/20	2686	640	1730	0.03	74	0	54	2.53	4.6	-1.3	0.39	0.33	-0.65
1093	3209721730	Solution X BGP RESOLVE DEBRA-ET	3/27/20	2685	626	1169	0.12	80	0.03	46	2.84	4.4	-3.8	1.54	1.5	1.29
1086	3209721723	Rome X BGP BANDARES BRAYTON-ET	2/15/20	2678	618	1514	0.01	61	-0.01	45	2.77	5.2	0.5	0.62	0.63	-0.19
		Group averages		2686	613	1212		66		43						



LOT 64 (Group Lot of 5 head)

*Housed at Ru-Barb Holsteins - Laporte, IN

HMID	Reg#	Dam	DOB	GTPI	NM\$	Milk	Fat%	Fat	Pro.%	Prot.	SCS	PL	DPR	Type	UDC	FLC
1081	3209721718	Solution X BGP DELTA HARMONY-ET	2/7/20	2678	619	1047	0.08	64	0.03	41	2.79	5.1	-0.2	1	0.82	0.77
1052	3209721689	Riveting X BGP DELTA HARMONY-ET	1/20/20	2677	560	-68	0.15	40	0.06	14	2.79	6.1	3.7	1.1	1.78	0.8
1087	3209721724	Rome X BGP BANDARES BRAYTON-ET	2/18/20	2676	593	934	0.11	67	0.03	38	2.67	5	0.1	0.78	0.92	-0.38
1058	3209721695	Solution X BGP RUB HUI-ET	1/22/20	2673	608	508	0.16	66	0.06	32	2.8	5.3	-0.2	0.95	1.08	1.03
1076	3209721713	Reviting X BGP FRAZZLED FONTANELLE-ET	2/1/20	2665	560	1609	0	62	-0.02	45	2.87	3.5	-0.5	0.98	1.38	-0.2
		Group averages		2674	588	806		60		34						

LOT 65 (Group Lot of 4 head)

*Housed at Ru-Barb Holsteins - Laporte, IN

HMID	Reg#	Dam	DOB	GTPI	NM\$	Milk	Fat%	Fat	Pro.%	Prot.	SCS	PL	DPR	Type	UDC	FLC
1066	3209721703	Rome X TRIPLECROWN DELTA 26-ET	1/24/20	2658	608	1309	0.09	78	0.01	45	2.76	4.3	-1	0.57	0.47	0.06
1065	3209721702	Solution X BGP DELTA HARMONY-ET	1/24/20	2656	566	1308	0.03	59	0	42	2.84	4.4	-0.7	1.51	1.35	0.62
1074	3209721711	Solution X PINE-TREE 12922 PON 7942-ET	2/1/20	2654	585	2000	0	78	-0.02	56	2.99	2.2	-3.1	1.1	1.23	0.43
1080	3209721717	Rome X BGP MODESTY IOWA CITY-ET	2/7/20	2649	578	1213	0.03	56	0	39	2.86	4.7	1	0.7	1.04	0.54
		Group averages		2654	584	1458		68		46						



BGP Modesty Havana-ET
(2nd Dam of Lots 40, 41 & 66)

LOT 66 Added Lot

BGP SLF Solution 19283-ET

3209480789 99%RHA-I
Born 4/21/20 6/20 PTA +2959GTPI
+1578M +.12% +97F +.04% +61P
+813NMS +5.3PL -.8DPR 2.85SCS
+1.62T +1.52UDC +.58FLC
+228FE +.0FI 7.9%SCE +838CMS
A2/A2 +933DWPS

*Full sister to Lot 41

*Housed at Swisslane Farms, Alto, MI

Fustead S-S-I Solution-ET

3139490455 4/20 PTA +2889GTPI
+1642M +.09% +89F +.00% +51P
+782NMS +5.8PL -1.5DPR 2.67SCS
+1.28T +1.23UDC +1.19FLC 79%R
Frazzled X VG-85 DOM Rubicon

BGP Jared Havana-ET

3200654227 4/20 PTA +2818GTPI
+1081M +62F +51P +667NMS +4.6PL
+2.0DPR +1.40T +1.87UDC +.25FLC
Sire: Clear-Echo Jed Jared 745-ET

2nd Dam:
BGP Modesty Havana
GP-83 ++G++
2-06 248 35000 4.4 1540 3.5 1225 RIP
Mat. bro.: 734HO91 Yolo

3rd Dam: (Pictured w/ Lot 24)
View-Home Mrdian Iowa-ET
VG-86 VVV+V DOM
2-02 365 35670 3.8 1342 3.3 1166

4th Dam: (Pictured w/ Lot 35)
Pine-Tree 2149Robst 4846-ET
VG-87 EEV+V DOM
2-04 365 32001 4.7 1520 3.4 1097
*8 sons in active AI including Monterey

5th Dam: Pine-Tree Zenith Sheen
VG-87 VV+VV DOM
1-11 365 27883 3.9 1092 3.0 855

6th Dam:
Pine-Tree Martha Sheen-ET
VG-86 VV+VV DOM
1-11 365 31210 4.2 1305 3.1 968

7th Dam:
Pine-Tree Missy Martha-ET
VG-86 VVV+V DOM
2-02 365 34730 3.6 1266 3.1 1070

8th Dam:
Wesswood-HC Rudy Missy-ET
EX-92,3E EEEEE GMD-DOM
4-11 365 40880 4.1 1665 3.4 1385
Lifetime 119610 4.1 4885 3.4 4031
*Global Cow of the Year 2014

9th Dam:
Wesswood Elton Mimi
EX-90 EEEEE GMD-DOM
3-05 365 35380 3.3 1160 3.0 1054

10th Dam:
Wesswood Mandingo Ivy
VG-87 VEEVV
6-05 365 36330 3.6 1305 2.8 1018
Lifetime 144060 3.4 4933 2.9 4139

11th Dam:
Wesswood Astro Matt Ester
VG-87 VEVV GMD-DOM
6-08 365 31860 3.5 1125 2.9 921
Lifetime 140110 3.6 5029 3.0 4158

12th Dam:
Wesswood Bell Claudette
VG-87 GMD-DOM
8-04 365 38150 3.8 1443 2.8 1064
Lifetime 280980 3.6 9997 2.9 8092



**KHW Regiment Apple-RED-ET
EX-96,3E EEEEE DOM**

**Grand Champion of the 2011 Grand International Red & White Show
(Mat. sister to 4th Dam of Lots C, 2, 3, 4 & 67)*



**Blondin TJR Supersire Aroma-ET*RC
UG-85 UUUU+**

2-01 305 24350 4.5 1099 3.1 756
(3rd Dam of Lots C, 2, 3, 4 & 67)

LOT 67 Added Lot

BGP SLF Solution 19266-ET

3209480772 99%RHA-I
Born 4/11/20 6/20 PTA +2930GTPI
+1039M +.17% +89F +.00% +32P
+832NMS +7.7PL +.8DPR 2.66SCS
+1.08T +1.57UDC +1.11FLC
+178FE +.3FI 6.1%SCE +841CMS
A1/A2

*Full sister to Lots 2 & 3

*Housed at Swisslane Farm, Alto, MI

Fustead S-S-I Solution-ET

3139490455 4/20 PTA +2889GTPI
+1642M +.09% +89F +.00% +51P
+782NMS +5.8PL -1.5DPR 2.67SCS
+1.28T +1.23UDC +1.19FLC 79%R
Frazzled X VG-85 DOM Rubicon

Le-O-La Ken Amber 41460-ET

3148918760 4/20 PTA +2738GTPI
+689M +.20% +84F +33P +669NMS
+4.6PL +1.1DPR +.88T +1.19UDC
-Recently fresh & looks great!
Sire: Pine-Tree Mod Kennedy713-ET

2nd Dam:

Endco Spring Anthem-ET
VG-86 VV+VV
2-01 365 29460 4.2 1236 3.0 895

3rd Dam: (Pictured above)

Blondin TJR Supersire Aroma-ET*RC
VG-85 VVVV+
2-01 305 24350 4.5 1099 3.1 756

4th Dam:

KHW Alchemy Adeline-RED-ET
VG-86 VVV+V
2-02 254 18080- 4.4 795 3.8 687

Maternal sister:

KHW Regiment Apple-RED-ET *CV
EX-96,3E EEEEE DOM
**Multiple All-Am & greatest R&W ever
(Pictured above)*

Maternal brother: 'Advent-RED'

5th Dam:

Kamps-Hollow Altitude-ET *CV
EX-95,2E EEEEE DOM
7-00 365 39690 4.7 1849 3.5 1385
Lifetime 144460 4.4 6295 3.7 5288

**6th Dam: Clover-Mist Alisha-ET
EX-93,3E EEEEE DOM**

8-07 365 36920 4.2 1553 3.4 1258
Lifetime 226470 4.7 10659 3.6 8149

**7th Dam: Clover-Mist Augy Star-ET*RC
EX-94,4E EEEEE DOM**

7-10 365 43140 5.0 2136 3.3 1421
Lifetime 206250 4.7 9793 3.5 7187

8th Dam: D-R-A August

EX-96,4E EEEEE DOM
8-05 365 27460 4.3 1187 3.2 871
Lifetime 190200 4.4 8281 3.3 4457

**Nom. All-American Aged Cow 1986
All-Wisconsin Aged Cow 1987

9th Dam:

D-R-A Ideal Precious Leader EX-90,2E
7-06 358 20090 3.9 787 3.4 765

10th Dam:

D-R-A Princess Lad Leader EX-90,3E



Fairmont Delta Rhonda-ET VG-85 +U+UU

1-11 321 23800 3.9 932 3.0 723

(Dam of Lots 1 & 68)

LOT 68 Added Lot

BGP SLF Solution 19264-ET

3209480770 99%RHA-I
Born 4/8/20 6/20 PTA +2911GTPI
+860M +.17% +83F +.06% +43P
+769NMS +5.8PL +.7DPR 2.71SCS
+1.62T +1.52UDC +1.29FLC
+187FE +1.1FI +8.7SCE +742CMS

A1/A2 +985DWPS

***Full sister to Lot 1**

***Housed at Swisslane Farm, Alto, MI**

Fustead S-S-I Solution-ET

3139490455 4/20 PTA +2889GTPI
+1642M +.09% +89F +.00% +51P
+782NMS +5.8PL -1.5DPR 2.67SCS
+1.28T +1.23UDC +1.19FLC 79%R
Frazzled X VG-85 DOM Rubicon

Fairmont Delta Rhonda-ET

3-04 VG-85 +V+VV 3132555088
4/20 PTA +2734GTPI +1197M +58F
+43P +633NMS +4.7PL +.6DPR
+.86T +1.57UDC +1.10FLC
1-11 321 23800 3.9 932 3.0 723
3-00 235 22840 3.0 757 3.0 683 RIP
proj. 305ME 30000M
Sire: Mr Mogul Delta 1427-ET
(Pictured above)

***Multiple daughters over +2900G**

***Dtrs sold for up to \$32,000**

2nd Dam

Fairmont Tuffenuff Ridge-ET
VG-86 +VG+V DOM
2-00 290 22360 4.0 887 3.6 803
2-11 305 28470 4.3 1221 3.9 1101

3rd Dam:

Co-Op Moonboy Rescue-ET
EX-90 VVVEE' DOM
4-02 305 27150 4.1 1111 3.7 994

4th Dam:

Deervue-Acres Robin CRI-ET
VG-85 +V+V GMD-DOM
1-10 365 33140 4.7 1563 3.3 1101

5th Dam:

Deervue-Acres Outside Robyn
VG-87 VVE+V GMD-DOM
3-11 365 40100 4.8 1941 3.4 1356
Lifetime 143680 4.7 6814 3.4 4932

6th Dam:

Deervue-Acres Rudlph Olivia
VG-85 VVE++
5-04 365 25030 5.4 1345 3.0 757
Lifetime 100620 4.5 4554 3.3 3293

7th Dam:

Schaefer Simon Olivia
VG-88 EEEEE
6-01 305 32980 5.1 1690 3.0 994
Lifetime 162860 4.5 7294 3.1 4996

8th Dam:

Jonvale T T Ollie
EX-90,2E VEEE GMD
10-09 365 27190 4.1 1111 2.9 789
Lifetime 213340 3.7 7980 3.1 6074

9th Dam:

Jonvale Tackman Ollie
VG-85 VVVV
3-03 308 15570 4.1 644

10th Dam:

Jonvale Zimmerman Alstar Ollie
VG-85 +V+V
Lifetime 123100 4.4 5380



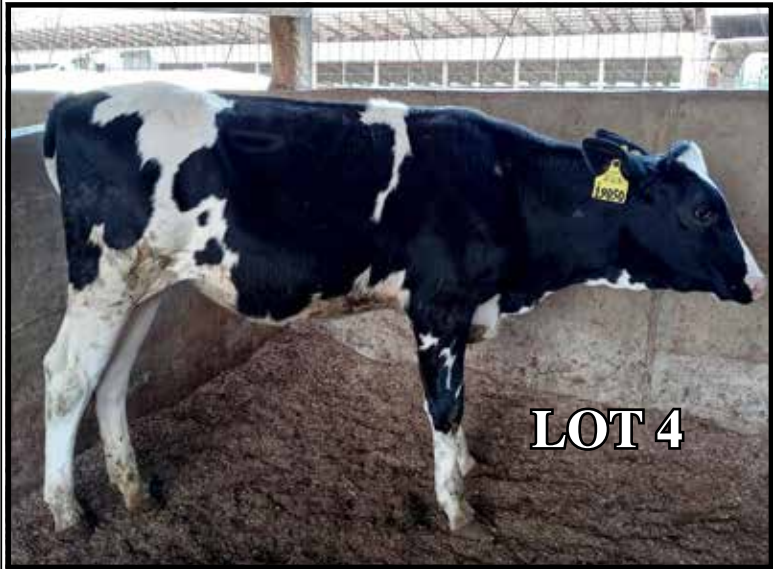
LOT 1



LOT 2



LOT 3



LOT 4



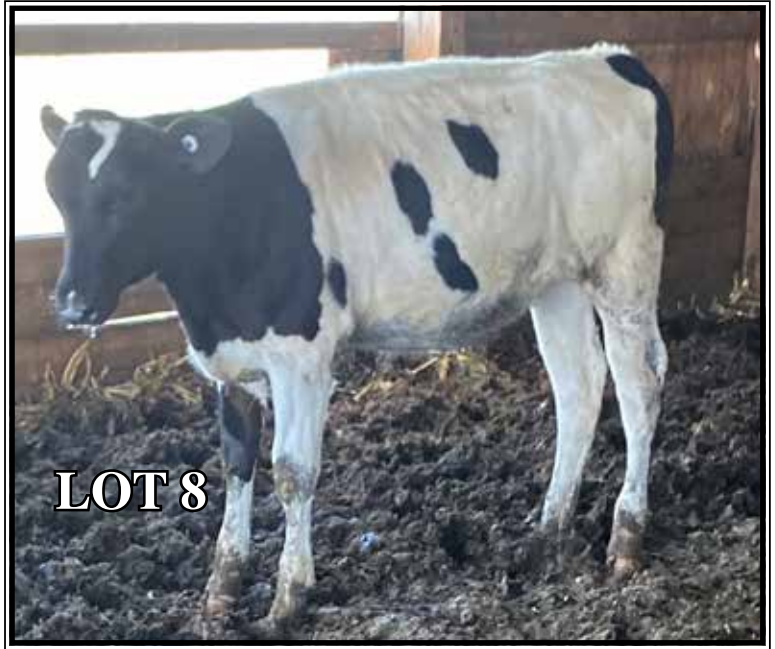
LOT 5



LOT 6



LOT 7



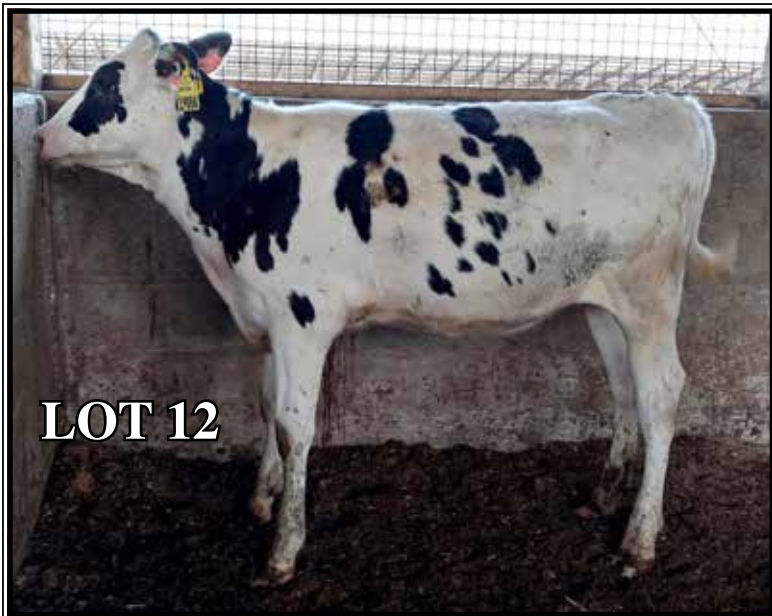
LOT 8



LOT 9



LOT 11



LOT 12



LOT 13





LOT 20



LOT 21



LOT 22



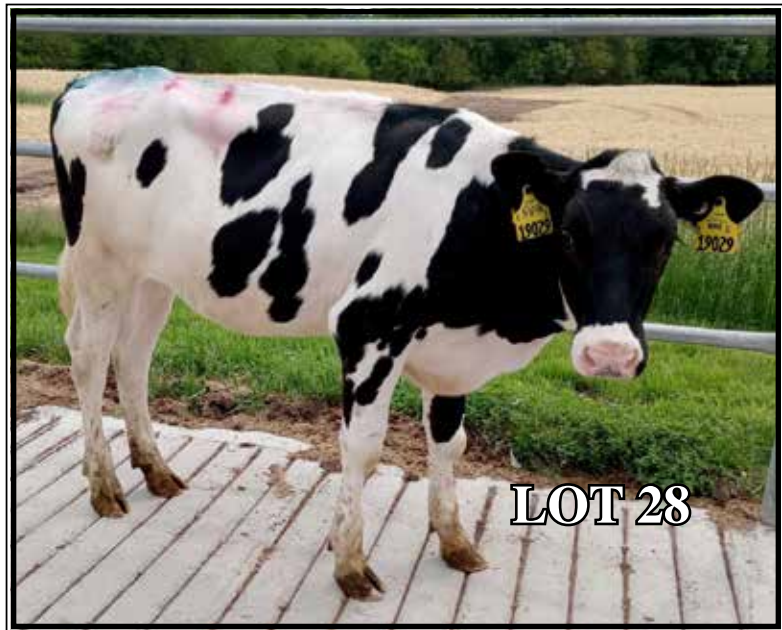
LOT 23



LOT 24



LOT 25









LOT 46



LOT 47



LOT 48



LOT 49



LOT 50



LOT 51



LOT 52



LOT 53



LOT 54



LOT 66
*Added Lot



LOT 67
*Added Lot



LOT 68
*Added Lot



HOLSTEIN ASSOCIATION TERMS AND CONDITIONS FOR PUBLIC SALES

EFFECTIVE MARCH 2, 1996 - Amended October 1, 1997, June 28, 2000, June 23, 2002, and March 26, 2010

TERMS: The terms of the sale are cash unless arrangements are made prior to the sale or are printed in the sale catalog. Only when the above conditions are met will the buyer be entitled to the warranties listed below. In no case will animals be released unless settlement is made with the clerk of the sale.

RESPONSIBILITY: The seller, buyer, and manager of this sale are obligated to comply with the provisions of these terms and conditions.

EXPORT SALES: Buyer assumes all responsibility for health tests required by the importing country.

BIDS: The highest bidder is the buyer. Bidding parties or their agents are responsible for all bids placed. Every animal or lot presented for bidding is pledged to absolute sale. In case of dispute, the animal or lot will again be put up for advance bids, and if there is no advance bid, the animal or lot will be sold to the person the auctioneer accepted the last bid from. In case two or more claim the bid, the auctioneer will indicate the party whose bid he recognized. Other claimants will be given an opportunity to increase the bid and bidding will be restricted to the two or more claimants.

BY-BIDDING: Bidding directly or indirectly by the sole owner of any animal or lot is prohibited unless the intention to bid is disclosed specific to each animal in the catalog and announced when the animal enters the ring. Bidding by any member of a partnership, syndicate, or other entity having an ownership interest in an animal or lot is permitted.

TRANSFER OF OWNERSHIP: For all Registered HolsteinsSM, the transfer of ownership to the buyer will be recorded on the records of Holstein Association USA and a certificate of registration showing that transfer of ownership will be provided to the buyer free of charge. For embryos, the transfer of ownership to the buyer will be recorded on the records of Holstein Association USA free of charge to the buyer.

RISK: All animals located at sale site are at the purchaser's risk as soon as struck off, but will be cared for free of charge for a maximum of 24 hours following the end of the sale.

WARRANTIES:

- 1) Each consignor warrants clear title to the animal or lot, and the right to sell same.
- 2) To the best of the seller's knowledge, each animal is sound and healthy in every respect and embryos have been recovered, processed, frozen, transferred and graded in keeping with IETS recommendations unless otherwise noted in the catalog or announced from the auction stand. Every precaution will be taken to represent the physical condition of each lot exactly as is known. Examination of all purchases should be made immediately after the purchase and before the close of the sale, and if found not to be as represented, complaint must be reported to the sale management before the close of the sale. In the event no complaint is filed, it is understood that the buyer assumes full ownership in the case of animals at sale site together with all risks, after which no representations of the seller can be challenged through the sale management. Heifers that never calved are in no way guaranteed as to the condition of their udders following calving.
- 3) **Breeding Warranty**
The seller guarantees all animals to be breeders, but not beyond the purchase price, with the following understanding:
 - a. Males - Should any bull after reaching the age of fourteen months fail to prove a breeder after being used for two months on cows or heifers known to be breeders, the matter shall be reported in writing to the seller within three months of the sale date. The report must include the animal's examination record, a written statement of treatment, and a statement of the animals' inability to breed,

by a licensed veterinarian. The seller has the option to refund the purchase price or make other settlement that is satisfactory to the buyer. In either case the rights of ownership of the animal return to the seller. The seller makes no guarantees with respect to the ability to freeze semen.

- b. Females - All females are guaranteed to be breeders with the exception of:
 1. Cows over 7 years of age when sold;
 2. Cows and/or heifers carrying a pregnancy that is the result of an embryo transfer.

Report of a non-breeder must occur in writing within 3 months of the date of sale or before the animal reaches 21 months of age and must be submitted to the seller. The report must include the animal's examination record, a written statement of treatment, and a statement of the animals' inability to breed, by a licensed veterinarian. The seller has the option to refund the purchase price or make other settlement that is satisfactory to the buyer. In either case the rights of ownership of the animal return to the seller.

Females bred when sold and pronounced in calf are presumed to be pregnant but pregnancy is not guaranteed unless so announced. The seller makes no warranty that pregnant cows will deliver calves or that they will carry calves full term.

- c. If, after the sale, embryos or oocytes are recovered from a female or an attempt is made to superovulate her, this negates the breeding warranty unless there is a separate written agreement between buyer and seller.

SHIPPING: Assistance will be given in arranging shipping of the animals after the sale. All costs, risks and responsibility will be borne by the purchaser.

PEDIGREE INFORMATION: All production, classification, type and production summaries are current. Only information recorded on Holstein Association USA pedigrees is used. Any production or classification records supplied by the seller or consignor will be properly identified as provided by owner. Records in progress are identified as such.

GENOMIC INFORMATION: If genomic information on the animal or embryo is available, it must be dated and disclosed at or before the time of sale.

EMBRYO TRANSFER: All registered animals that have resulted from embryo transfer are identified with one of the following suffixes in the name: ET, ETS (from split embryo), or ETN (from nuclear transfer). If unregistered, the appropriate technology will be identified. Donor dams are identified.

HEALTH WARRANTY: The seller will provide an official health certificate to the buyer for each animal showing the results of all health tests made in preparation for this sale as required by the state where the cattle reside. Other health tests completed for this sale will be disclosed.

ERRORS: The material in this catalog has been carefully edited. If any errors or omissions are discovered, they will be announced. Such announcements take precedence over that printed in this catalog.

ACCIDENT: The sale management, the consignors, and the owner of the grounds will not be responsible in any case for the condition of the grounds or the behavior of the animals and disclaim any liability in the event of personal accident or property loss.

LIMITATIONS OF WARRANTIES: Warranties contained herein, unless terminated earlier, will cease upon the resale of an animal.

Alphabetical Index

BGP Maroon Fairfax 1008-ET	38
BGP Maroon Fairfax 1009-ET	36
BGP Maroon Fairfax 1017-ET	37
BGP Maroon Fayette 1006-ET	53
BGP Ponch Frederika 1002-ET	27
BGP Poncho Fontelle 1010-ET	52
BGP Riveting Ftn 1077-ET	51
BGP Rome Brayton 1085-ET	43
BGP Rome Dhvn 1018-ET	9
BGP Rome Dhvn 1019-ET	8
BGP Rome Frederika 1088-ET	24
BGP Rome Mimi 1091-ET	19
BGP SLF Renegade 19192-ET	22
BGP SLF Renegade 19194-ET	21
BGP SLF Riveting 19182-ET	7
BGP SLF Rome 19000-ET	49
BGP SLF Rome 19004-ET	25
BGP SLF Rome 19011-ET	14
BGP SLF Rome 19016-ET	15
BGP SLF Rome 19031-ET	42
BGP SLF Rome 19033-ET	35
BGP SLF Rome 19050-ET	4
BGP SLF Rome 19215-ET	16
BGP SLF Rome 19227-ET	18
BGP SLF Solution 18999-ET	54
BGP SLF Solution 19035-ET	47
BGP SLF Solution 19042-ET	44
BGP SLF Solution 19046-ET	46
BGP SLF Solution 19051-ET	48
BGP SLF Solution 19077-ET	23
BGP SLF Solution 19084-ET	12
BGP SLF Solution 19106-ET	50
BGP SLF Solution 19197-ET	5
BGP SLF Solution 19211-ET	13
BGP SLF Solution 19224-ET	3
BGP SLF Solution 19228-ET	40
BGP SLF Solution 19234-ET	2
BGP Solution Dhrmy 1082-ET	6
BGP Solution Fonda 1030-ET	45
BGP Solution Havana 1094-ET	41
BGP Solution Mimi 1054-ET	20
BGP Solution Pont 1071-ET	11
BGP Solution Rhonda 1096-ET	1
Ms BGP Maroon Sioux 1057-ET	32
Ms BGP Maroon Sioux 1059-ET	33
Ms BGP Maroon Sioux 1060-ET	30
Ms BGP Maroon Sioux 1062-ET	34
Ms BGP Maroon Sioux 1069-ET	31

Please Bring This Catalog to the Sale!

Catalogs by:

Daniel Brandt 
PEDIGREES & MARKETING

167 Valley Lane, Annville, PA 17003

Ph: 717-821-1238 • E-mail: brandtfive@comcast.net