

New York Spring Ayrshire Sale



Friday, April 6, 2018 6 PM
New York State Fairgrounds, Syracuse, NY

2018 New York Spring Ayrshire Sale

Sponsored by the New York Ayrshire Club

A Silent Auction to benefit the

New York Junior Ayrshire Club will also be held.

Sale Chairman:	Jim Curtis	315.380.5144
Selections:	Gregory Evans	315.456.8283
	Jim Curtis	315.380.5144
	Erin Curtis Szalach	315.863.5910
Pedigrees:	Gregory Evans	315.456.8283
Auctioneer:	Fraley Auction Co.	570.546.6907
Catalog:	Diana Curtis Szalach	315.706.1386
Ringmen:	Jim Curtis	315.380.5144
	Christopher Sweeney	716.534.7827

Cattle Preparation: Erin Curtis Szalach; Kayla McCaulley; Andrew Curtis Szalach; Alexandria Smith; Faith Avedisian; Brandon Smith; Alex Smith; Matthew Sweeney; Jim Patsos Jr.; Jim Curtis; Gleason Walley; Eric Curtis; Diana Curtis Szalach.

Thank You for Your Generous Donation

DeRuyter Farm & Garden Coop

The Licata Family

Jim Patsos & Family

Jackson Hill Farm

Burns Daughters

The Curtis Family

NEW YORK SPRING AYRSHIRE SALE



OLD BANKSTON JC BIKINI-ET
Dam Of Lot AA

AA

FIVE (5) #2 EMBRYOS

PALMYRA BERKELY REAGAN-ET

840003123620602
 PTA +2.96SCC +2.3PL -1.1DPR
 PTA +593M +34F +17P 49R 12/17
 PTA% +.06
 PTAT +1.60T 48R 12/17

**OLD BANKSTON JC BRI'S
 BIKINI-ET**

69949958
 4-05 91
 DHI
 2-08 305 18720 3.8 707 3.2 598

PALMYRA BENDIG BERKELY-ET

69261805
 PTA +3.03SCC -1.1PL
 PTA -90M -5F +10P 93R 12/17
 PTA% -.04
 PTAT +.90T 89R 12/17
 D/AV 19494M 3.9 767F 3.1 607P 8.5T

PALMYRA POKER LH ROSY-ET

66596106
 4-01 92 ELITE
 GOLD
 2-00 298 19900 4.5 896 3.3 654
 3-00 305 22420 4.5 1012 3.5 789
 365 26100 4.4 1161 3.5 910

MARGOT CALIMERO

10310847C
 PTA +3.09SCC -1.4PL +0.8DPR
 PTA -353M +1F -4P 97R 12/17
 PTA% +.08 +.04
 PTAT +1.10T 95R 12/17
 D/AV 19528M 4.0 774F 3.2 623P 8.6T

**STEAM VALLEY WILTON MAGIC
 BRI**

100475641
 GOLD
 10-08 305 30020 4.0 1210 3.1 916
 3-04 352 23530 3.6 845 3.1 726
 4-10 305 26430 3.6 963 3.1 813
 5-11 364 32470 3.3 1058 3.0 977
 7-10 273 23050 3.2 732 3.0 695
 LIFE 1943 153560 3.6 5522 3.1 4729

FRALEY, LANDREE

**4000 MUNCY EXCHANGE ROAD
 MUNCY, PA 17756
 570-437-3215**

BIKINI'S (DAM) SHOW WINNINGS:

1ST SR-YEAR-OLD - SOUTHERN NATIONAL SHOW 2015
 RES INTERMEDIATE CHAMPION - SOUTHERN NATIONAL SHOW 2015
 1ST 4-YEAR-OLD MID-ATLANTIC NATIONAL JR SHOW 2017
 GRAND CHAMPION - MID ATLANTIC NATIONAL JR SHOW 2017
 2ND 4-YEAR-OLD - CENTRAL NATIONAL JR SHOW 2017
 NOM. ALL AMERICAN 4-YEAR-OLD 2017
 RES JR ALL-AMERICAN 4-YEAR-OLD 2017

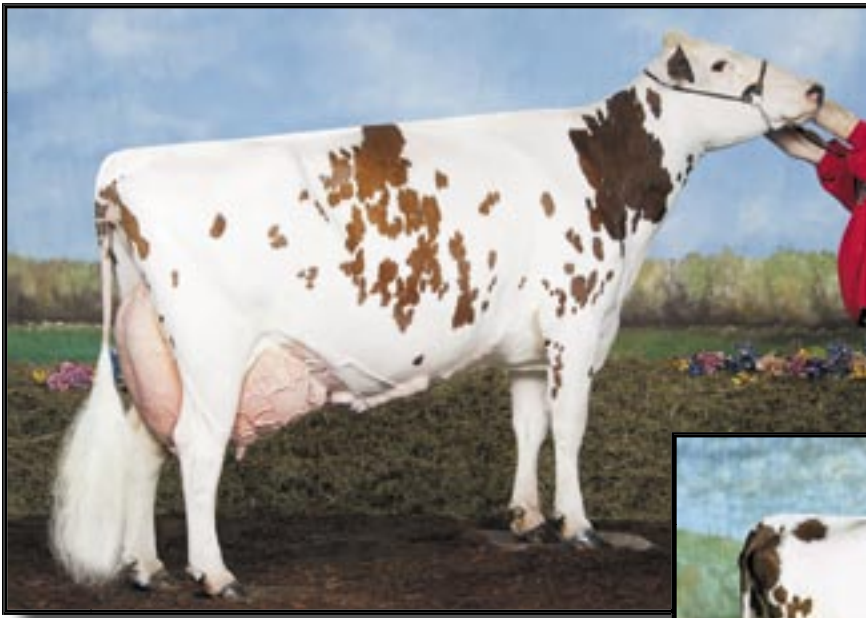
BRI'S (2ND DAM) SHOW WINNINGS:

GRAND CHAMPION - INTERNATIONAL AYRSHIRE SHOW 2011
 UNAN ALL-AMERICAN 5-YEAR-OLD 2011
 ALL WORLD 5-YEAR-OLD 2011
 HM ALL-AMERICAN AGED COW 2012
 UNAN ALL-AMERICAN AGED 100,000 LB COW 2013

BARBIE (3RD DAM) SHOW WINNINGS:

NOM ALL-AMERICAN SUPPER YEARLING & HM JR. ALL-AMERICAN SUMMER YEARLING 2015

NEW YORK SPRING AYRSHIRE SALE



Kler-Vu Jelly Bean, EX-92 3E
Dam to Lot AB

Woodland View Jelly, EX-91
Grand Dam of Lot AB



AB

FOUR (4) #1 EMBRYOS

LIBBY'S LOCHINVAR

100543021
PTA +2.89SCC -0.6PL -1.8DPR
PTA +1006M +7F +17P 93R 12/17
PTA% -.16 -.07
PTAT +1.60T 87R 12/17
D/AV 20078M 3.7 748F 3.0 609P 8.5T

KLER-VU JELLY BEAN

KLER-VU JELLY BEAN
65269863
8-02 92 3E
GOLD
3-10 305 20190 4.7 958 3.3 660
4-11 305 23120 3.8 871 3.0 701
6-01 305 23390 3.9 921 3.0 701
7-04 305 24460 3.6 877 3.0 743
DHI
2-09 305 19830 4.2 842 3.3 652
6-01 365 27140 3.9 1072 3.0 818
7-04 365 28890 3.5 1016 3.1 885
8-08 305 17720 4.0 715 3.2 560
LIFE 2276 152447 4.1 6227 3.2 4835

PALMYRA TRI-STAR BURDETTE-ET

100419568
PTA +2.89SCC +0.9PL -0.3DPR
PTA +325M +9F +15P 99R 12/17
PTA% -.02 +.03
PTAT +1.80T 99R 12/17
D/AV 19835M 3.9 778F 3.2 630P 8.5T

COVEY-FARMS WILTON LIBBY

100430545
5-03 93 2E
GOLD
2-01 365 26740 3.8 1028 3.1 816
4-11 305 34290 3.4 1168 2.8 947
365 38550 3.5 1330 2.8 1090
8-10 260 15720 5.9 933 3.1 495
DHI
2-01 305 23450 3.8 888 3.0 705
3-04 305 20190 3.5 706 3.1 623
365 21630 3.5 752 3.1 665
LIFE 1487 110040 3.9 4316 3.0 3316

KELCREST AVENGER-ET

100273427
PTA +2.73SCC +4.2PL +1.7DPR
PTA -126M +4F -4P 96R 12/16
PTA% +.05
PTAT +.60T 91R 12/16
D/AV 18289M 3.9 722F 3.1 572P 8.4T

WOODLAND VIEW JELLY

100107898
5-01 91
2-10 305 10077 4.7 470 3.7 369
3-10 305 15152 4.2 634 3.2 484
4-11 305 12477 4.8 604 3.2 403
6-00 303 13886 3.9 536 3.2 441
6-10 305 14038 3.9 543 3.1 431
8-02 251 9725 2.7 263 3.0 296
9-04 305 13199 4.2 550 3.3 441
LIFE 2745 102013 4.1 4215 3.3 3349

TOM GILLETTE
5137 OLD ROUTE 12
LYON FALLS, NY 13368
315.982.7707

*2 Excellent Dams!!
Dam with over 20,000 milk*

NEW YORK SPRING AYRSHIRE SALE



DAVIS PEDRO PANDORA
Dam Of Lot AC

AC FOUR (4) #1 EMBRYOS

Duo Star Gentleman-ET

106306758C
PTA +3.09SCC +0.7PL +1.2DPR
PTA -548M -5F -15P 86R 12/17
PTA% +.10
PTAT +1.50T 71R 12/17
D/AV 17988M 4.0 722F 3.1 555P 8.7T

DAVIS PEDRO PANDORA

100679979
3-08 87

PALMYRA TRI-STAR REALITY

100369452
PTA +3.00SCC +1.2PL +0.10DPR
PTA +601M +26F +9P 97R 12/17
PTA% +.01 -.05
PTAT +1.00T 95R 12/17
D/AV 21224M 4.0 841F 3.1 652P 8.6T

DUO STAR AMOUR-ET

103638586C
DHI
2-01 305 22320 4.2 948 3.3 730
350 24709 4.3 1058 3.3 818
3-04 305 24112 3.9 939 3.2 776
365 27571 3.8 1058 3.2 895
4-09 305 28213 3.7 1036 3.3 933
365 31689 3.7 1173 3.3 1056
6-07 305 27761 3.5 972 3.2 884
365 31079 3.5 1089 3.2 999
LIFE 1686 123634 3.8 4751 3.3 4089

BLIND-BUCK-VALLEY POKERS

PEDRO-ET

100609185
PTA +2.90SCC +0.7PL -0.3DPR
PTA +271M +13F +15P 67R 12/17
PTA% +.02 +.03
PTAT +.80T 52R 12/17
D/AV 17852M 3.8 684F 3.1 559P 8.5T

DAVIS RAMIUS PORK

100633612
5-08 90

PULVER, SARA & BENSON, LORI & DOTY, MOLLY

15 COOPER ST
FORT EDWARD, NY 12828
518-260-0019

PORK'S (GRANDDAM'S) SHOW WINNINGS;

1ST Fall Yearling in Milk - Mid
Atlantic National Junior Show 2013

*Embryos from the Red Pepper
Family!! Here's your chance to
own grandbabies from the one and
only Red Pepper!!*

NEW YORK SPRING AYRSHIRE SALE



YELLOW BRIAR BURDETTE PANAMA
Dam Of Lot A1

A1

ELITE-HP PEACH-ET

Born: 09/05/17
 98.84% AYRSHIRE

840003142494079
 P9+490

PALMYRA BERKELY REAGAN-ET

840003123620602
 PTA +2.96SCC +2.3PL -1.1DPR
 PTA +593M +34F +17P 49R 12/17
 PTA% +.06
 PTAT +1.60T 48R 12/17

YELLOW BRIAR BURDETTE PANAMA

100712308
 4-10 93
 GOLD
 3-04 289 22630 4.1 917 3.2 733

PALMYRA BENDIG BERKELY-ET

69261805
 PTA +3.03SCC -1.1PL
 PTA -90M -5F +10P 93R 12/17
 PTA% -.04
 PTAT +.90T 89R 12/17
 D/AV 19494M 3.9 767F 3.1 607P 8.5T

PALMYRA POKER LH ROSY-ET

66596106
 4-01 92 ELITE
 GOLD
 2-00 298 19900 4.5 896 3.3 654
 3-00 305 22420 4.5 1012 3.5 789
 365 26100 4.4 1161 3.5 910

PALMYRA TRI-STAR BURDETTE-ET

100419568
 PTA +2.89SCC +0.9PL -0.3DPR
 PTA +325M +9F +15P 99R 12/17
 PTA% -.02 +.03
 PTAT +1.80T 99R 12/17
 D/AV 19835M 3.9 778F 3.2 630P 8.5T

YELLOW BRIAR CAL PANAMA

10920876C
 13-06 91 4E

*VAIL, PETER & MIKE & LINDA
 HELLENBRAND*

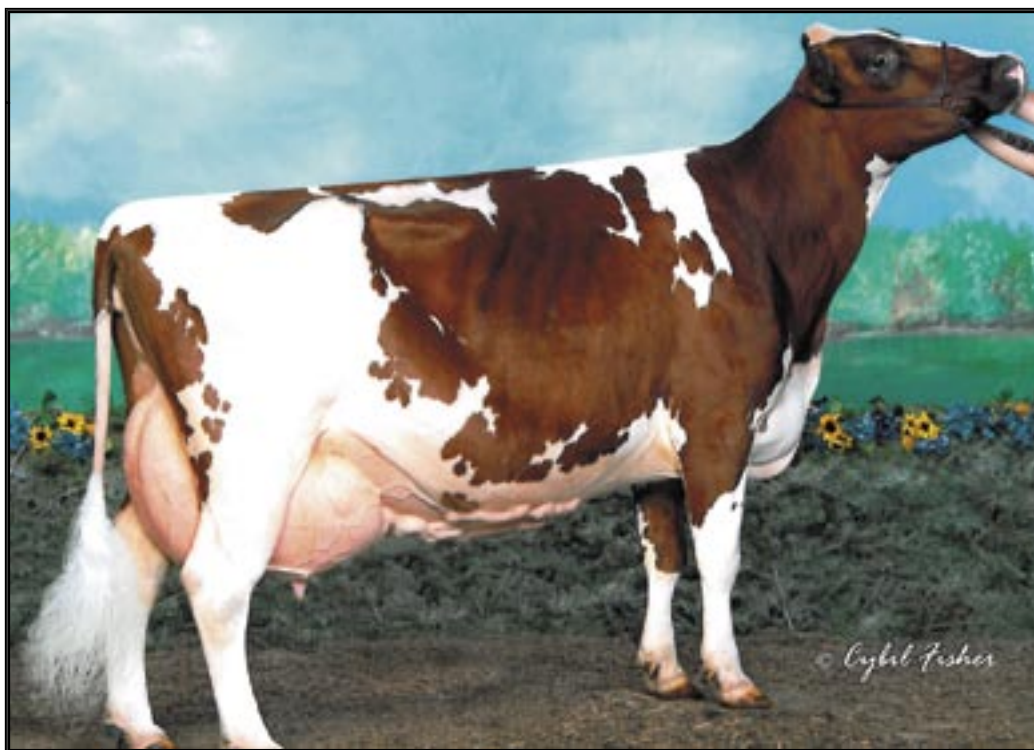
*5065 N. HILLPOINT ROAD
 CROSS PLAINS, WI
 608-798-1952*

PANAMA (DAM) SHOW WINNINGS:

*1ST JR. 3-YEAR-OLD - MID ATLANTIC
 NATIONAL SHOW 2016
 INTERMEDIATE CHAMPION -
 MID-ATLANTIC NATIONAL SHOW 2016
 2ND JR. 3-YEAR-OLD - INTERNATIONAL
 AYRSHIRE SHOW 2016
 RES. ALL-AMERICAN JR. 3-YEAR-OLD
 2016*

*LOOK AT THIS!!
 A SWEET "PEACH" FROM PANAMA JUST
 RIGHT FOR THE SHOWS!*

NEW YORK SPRING AYRSHIRE SALE



VALES-PRIDE TRI-MAGIC JIANNI
GRANDDAM of Lot A2

A2 VALES-PRIDE PREDATOR JENGA-ET

Born: 12/17/17
 100% AYRSHIRE

840003143960751
 P7 +464

FOREVER SCHOON PREDATOR-ET

11119921C
 PTA +2.86SCC +1.4PL -2.6DPR
 PTA +325M +18F +9P 87R 12/17
 PTA% +.03
 PTAT +1.20T 79R 12/17
 D/AV 21045M 4.0 837F 3.2 663P 8.5T

VALES-PRIDE BENDIG JEMINI

100665138
 4-06 90
 GOLD
 2-07 365 26380 4.2 1101 3.0 793

PALMYRA TRI-STAR REALITY

100369452
 PTA +3.00SCC +1.2PL +0.10DPR
 PTA +601M +26F +9P 97R 12/17
 PTA% +.01 -.05
 PTAT +1.00T 95R 12/17
 D/AV 21224M 4.0 841F 3.1 652P 8.6T

FOREVER SCHOON PRETTY

7441960C
 DHI
 2-05 305 17130 4.8 825 3.5 608
 3-05 305 20686 4.8 1001 3.8 778
 4-07 305 22646 4.4 1001 3.5 798
 6-07 305 23702 4.6 1102 3.3 794

PALMYRA JERRY BENDIG-ET

100323168
 PTA +2.82SCC +0.1PL -2.8DPR
 PTA +790M +33F +20P 96R 12/17
 PTA% +.01 -.03
 PTAT +.70T 94R 12/17
 D/AV 19228M 3.9 744F 3.2 608P 8.5T

VALES-PRIDE TRI-MAGIC JIANNI

100337600
 13-06 91 4E
 GOLD
 2-06 305 20600 4.8 988 3.2 654
 3-09 293 20330 4.8 973 3.4 686
 4-08 305 21080 4.3 910 3.3 694
 5-09 305 23120 4.8 1114 3.3 754
 6-10 305 23400 5.1 1202 3.0 708
 8-04 305 24080 4.5 1080 3.1 745
 LIFE 3563 244110 4.6 11289 3.2 7759

VALENTINE, MICAEL & DENISE
 16901 BOLLINGER SCHOOL RD
 EMMITSBURG, MD 21727
 301-447-6816

JIANNI'S (GRANDDAM) SHOW WINNINGS:

2ND 100,000 LB COW - MID-ATLANTIC NATIONAL SHOW 2013

A Winter Calf From 2 Excellent Dams!!

Production & Type!!

A3 SWEET-PEPPER PREDATOR STORM

Born: 09/13/17
100% AYRSHIRE

100742420
P6 +460

PALMYRA TRI-STAR REALITY

100369452
PTA +3.00SCC +1.2PL +0.10DPR
PTA +601M +26F +9P 97R 12/17
PTA% +.01 -.05
PTAT +1.00T 95R 12/17
D/AV 21224M 4.0 841F 3.1 652P 8.6T

HAWKSLEY, CRAIG & BONNIE
230 JAMES TRAIL
WEST KINGSTON, RI 02892
401-539-2753

FOREVER SCHOON PREDATOR-ET

11119921c
PTA +2.86SCC +1.4PL -2.6DPR
PTA +325M +18F +9P 87R 12/17
PTA% +.03
PTAT +1.20T 79R 12/17
D/AV 21045M 4.0 837F 3.2 663P 8.5T

FOREVER SCHOON PRETTY 7441960C

DHI
2-05 305 17130 4.8 825 3.5 608
313 17496 4.8 844 3.6 624
3-05 305 20686 4.8 1001 3.8 778
342 22425 4.8 1082 3.8 849
4-07 305 22646 4.4 1001 3.5 798
359 25064 4.4 1098 3.6 895
6-07 305 23702 4.6 1102 3.3 794
365 26026 4.6 1206 3.4 884

Look at her potential!! Fall calf out of VG-87 2-Year-Old and a 93 pt Granddam!

Another great calf from the Sweet-Pepper herd!

SWEET-PEPPER FRANCIS SCARLET

100684328
2-10 87

DEER-HILL FRANCIS

100602629 2-02 91
PTA +3.38SCC +0.1PL +1.7DPR
PTA -1175M -44F 31P 63R 12/17
PTA% +.01 +.03
PTAT -.30T 43R 12/17
D/AV 18374M 4.1 749F 3.3 602P 8.6T

*SYDNEY (SECOND DAM) WININGS;
1st Spring Calf - Eastern States National Show 2009*

2nd Spring Yearling - Eastern States National Show 2010

2nd Jr. 2-Year-Old - Eastern States National Show 2011

3rd 4-Year-Old - Eastern States National Show 2013

2nd Aged Cow - Eastern States National Show 2015

SWEET-PEPPER HANNIBAL SYDNEY

100574144
7-07 93 3E

A4 GIN-VAL BURDETTE HERSHEY KISS

Born: 03/20/17
100% AYRSHIRE

100730234
P6 +449

PALMYRA TRI-STAR

150440
PTA +2.85SCC -1.2PL -1.4DPR
PTA +244M +7F +7P 97R 12/17
PTA% -.01
PTAT +.50T 94R 12/17
D/AV 19701M 3.9 767F 3.1 617P 8.4T

CLARK, CASSANDRA L
30 CORNISH STAGE RD
CORNISH, NH 03745

PALMYRA TRI-STAR BURDETTE-ET

100419568
PTA +2.89SCC +0.9PL -0.3DPR
PTA +325M +9F +15P 99R 12/17
PTA% -.02 +.03
PTAT +1.80T 99R 12/17
D/AV 19835M 3.9 778F 3.2 630P 8.5T

PALMYRA RENO BETHANY-ET

100101191
3-06 90
GOLD
1-11 305 22700 3.8 867 3.1 701
3-01 305 26910 3.6 959 3.3 875
365 30930 3.6 1104 3.3 1006
4-08 305 31920 3.9 1233 3.1 982
365 35780 3.8 1374 3.1 1123
DHI
1-11 365 26925 3.9 1038 3.1 847
LIFE 1551 120700 3.7 4496 3.2 3855

*Hello Kitty (Dam's) Show Record
3rd Spring Calf - Eastern States National Show 2014*

1st Jr. 2-year-old - Eastern States National Show 2016

Nom. Jr. All-american Jr. 2-year-old 2016

BLUE-SPRUCE HELLO KITTY

8.40003E+14
3-02 87

BLACKADDAR GEORGE

7591556C
PTAT +2.97SCC -0.9PL +1.2DPR
PTA -728M -19F -12P 85R
PTA% +.05 +.06
PTAT +.10T 70R 12/17
D/AV 19537M 3.8 750F 3.3 640P 8.3T

Burdette Spring Yearling For This Summer!! Burdette Makes Them Right!

BLUE-SPRUCE TRIDENT 9526

8.40003E+14
4-06 87
DHI
2-00 305 18310 4.4 801 3.5 645
3-05 253 15890 3.5 561 3.3 530

A5 JACKSON-HILL DWHAMMY ORA

Born: 06/02/17
97.68% AYRSHIRE

840003143182729
P6 +454

MARGOT CALIMERO

10310847C
PTA +3.09SCC +1.4PL +0.8DPR
PTA -353M +1F -4P 97R 12/17
PTA% +.08 +.04
PTAT +1.10T 95R 12/17
D/AV 19528M 4.0 774F 3.2 623P 8.6T

ATHERTON, JADE
2435 CTY RTE 63
GREENWOOD, NY 14839
607-792-3732

FAMILY-AF-AYR DOUBLWHAMMY-ET

100516902
PTA +3.01SCC -0.9PL -0.3DPR
PTA -90M +1F -1P 92R 12/17
PTA% +.02
PTAT +1.40T 86R 12/17
D/AV 19860M 4.0 790F 3.2 635P 8.6T

FAMILY-AF-AYR DK DESIREE

1020932
12-02 95 4E
GOLD
2-04 305 18030 3.9 697 3.1 556
3-09 305 16440 4.0 655 3.2 531
4-10 305 17480 3.5 609 3.1 540
6-11 305 20410 3.9 791 3.0 604
8-11 305 20200 3.9 780 3.0 602

JACKSON-HILL RODNEY OPAL

71245876
4-07 91

1-11 305D 20372M 4.2 853F 3.1 627P
2-11 305D 24103M 4.0 960F 3.2 781P
4-01 305D 21704M 4.0 870F 3.2 684P

HAWKSFIELD SARGE

RODNEY-ET

65992079
PTAT +1.00T 59R 12/17
D/AV 8.6T

JACKSON-HILL GLADIATOR OCEAN

65006987
4-08 90
DHI
2-03 305 17640 3.7 656 3.1 555
3-05 305 18590 3.5 652 3.1 581
4-06 305 15610 3.7 570 3.3 512
5-08 294 17770 4.2 750 3.1 553
6-07 301 18220 4.1 747 3.1 570
7-07 305 18420 3.9 711 3.4 623
LIFE 2035 114460 3.9 4419 3.2 3664

*Look At This Summer
Yearling! Two Generations Of
Excellent Dams! Jade Is Giving You
The Chance Take Home The Third!*

A6 PLEASANT-KNOB L CLARABELL

Born: 07/08/17
98.84% AYRSHIRE

840003139269470
P5 +441

PALMYRA TRI-STAR BUR- DETTE-ET

100419568
PTA +2.89SCC +0.9PL -0.3DPR
PTA +325M +9F +15P 99R 12/17
PTA% -.02 +.03
PTAT +1.80T 99R 12/17
D/AV 19835M 3.9 778F 3.2 630P 8.5T

RYMPH, BARBARA
4 EASTON STATION ROAD
GREENWHICH, NY 12834

LIBBY'S LOCHINVAR

100543021
PTA +2.98CC -0.6PL -1.8DPR
PTA +1006M +7F +17P 93R 12/17
PTA% -.16 -.07
PTAT +1.60T 87R 12/17
D/AV 20078M 3.7 748F 3.0 609P 8.5T

COVEY-FARMS WILTON LIBBY

100430545
5-03 93 2E
GOLD
2-01 365 26740 3.8 1028 3.1 816
4-11 305 34290 3.4 1168 2.8 947
8-10 260 15720 5.9 933 3.1 495
DHI
2-01 305 23450 3.8 888 3.0 705
3-04 305 20190 3.5 706 3.1 623
LIFE 1487 110040 3.9 4316 3.0 3316

*A LOCHINVAR SUMMER
YEARLING!!*

CR-FARM POKER CLAIM

100644982
4-09 85

DES CHAMOIS POKER-ET

8401621C
PTA +2.88SCC +1.6PL -2.1DPR
PTA +222M +22F +5P 98R 12/17
PTA% +.07 -.01
PTAT +.60T 98R 12/17
D/AV 19305M 4.0 766F 3.1 607P 8.5T

MARBRAE CALM

100592511
7-06 91 3E
GOLD
4-03 289 14940 3.6 538 3.1 463
DHI
3-03 305 18780 4.5 845 3.1 591
5-03 305 19860 3.6 724 3.0 600
6-09 305 23150 4.0 915 3.2 730

A7 SWEET-PEPPER HAWTHORNE HAZE

Born: 06/04/17
100%AYRSHIRE

100737464
P- +433

**SWEET-PEPPER FRANCIS
HAWTHORNE**
100697672

DEER-HILL FRANCIS
100602629 2-02 91
PTA +3.38SCC +0.1PL +1.7DPR
PTA -1175M -44F 31P 63R 12/17
PTA% +.01 +.03
PTAT -.30T 43R 12/17
D/AV 18374M 4.1 749F 3.3 602P 8.6T

HAWKSLEY, CRAIG & BONNIE
230 JAMES TRAIL
WEST KINGSTON, RI 02892
401-539-2753

SWEET-PEPPER MODEM HALA
100556964
9-03 92 2E

SWEET-PEPPER POKER HOOTIE
100684289

DES CHAMOIS POKER-ET
8401621C
PTA +2.88SCC +1.6PL -2.1DPR
PTA +222M +22F +5P 98R 12/17
PTA% +.07 -.01
PTAT +.60T 98R 12/17
D/AV 19305M 4.0 766F 3.1 607P 8.5T

*Look At This!! A Summer
Yearling From Sweet-Pepper!*

**SWEET-PEPPER SAM
HENNESSY**
100557004
3-03 82
DHI
1-10 305 14220 4.3 608 3.1 444
3-02 305 17530 4.0 709 3.1 551
358 18780 4.1 766 3.2 598

