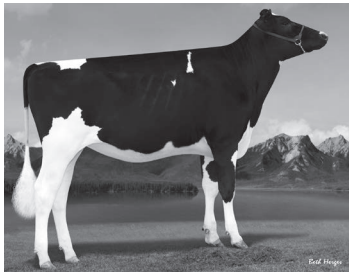


PEAKing at Christmas tag sale!

Sale at Budjon Boarding; N9995 Soo Rd, Lomira, WI ♦ December 14 - December 15 from noon to noon



ENDCO EXACTA-ET +2830G
9/17 Eldorado +2843G +968NM +116F
10/17 Eldorado +2754G +892 NM +2467M



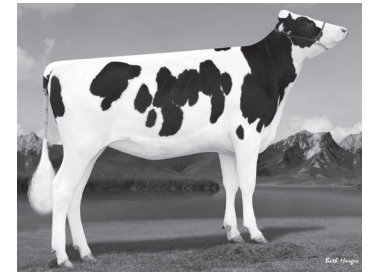
VIEW-HOME SILVER ROSE-ET +2705G
8/17 AltaTOPSHOT +2705G +872NM
8/17 Frazzled +2780G +888NM
9-10/16 Samuri +2833-2719G (5 calves)
7/17 Alta24K +2710G +815NM
8/17 AltaFLYWHEEL +2736G & 27009G (2 calves)
4/17 Hotline +2728G +2.87T
10/17 King Royal +2727G +3.55T



RI-VAL-RE DELTA MYSTERY-ET +2762G
9/17 Samuri +2827G +954NM +112F
9/17 Samuri +2754G +925NM +98F
9/17 AltaCAYENNE +2738G +870NM +3.0DPR



TRIPLECROWN AL DIVINE VG-86 +2643G
Dam of HUGE GTPI offspring!
She sells with a Japanese embryo contract!



PINE-TREE SUSANNA-ET +2677G
9/17 Samuri +2798G +937NM +9.7PL +3.1DPR
8/17 Frazzled +2734G +940NM +2163M +9.2PL
8/17 Frazzled +2716G +2797M +160RZG



PEAK MYSTIQUE-ET +2746G
9/17 Eldorado +2793G +947NM +2099M
7/17 Outlast +2769G +2182M +158RZG



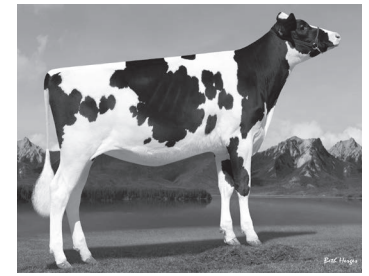
PEAK LADYBUG-ET +2648G
7/17 Outlast +2791G +946NM +108F



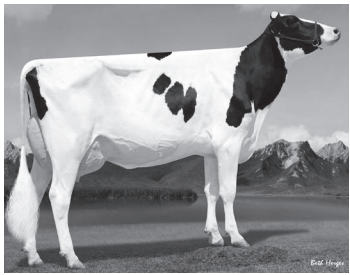
WELCOME LUXURY-ET +2719G
8/17 Frazzled +2790G +962NM +113F
9/17 Burley +2752G +859NM +96F
9/17 Samuri +2733G +835NM +73P
7/17 Frazzled +2712G +860NM +2231M 71P



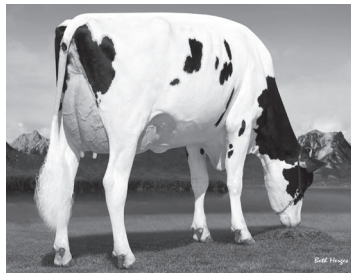
PEAK MEDALLION-ET +2699G
8/17 Blowtorch +2789G +916NM +91F +55P
9/17 AltaROBSON +2761G +894NM +157RZG
8/17 Frazzled +2716G +937NM +2048M
9/17 AltaROBSON +2711G +866NM +9.3PL
8/17 Blowtorch +2709G +841NM +8.0PL



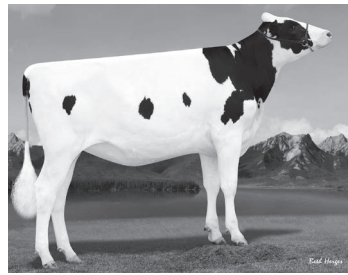
BGP HAWAII-ET +2676G
9/17 Samuri +2787G +92F +3.3DPR
9/17 Hotline +2762G +101F +2.83T
9/17 Samuri +2727G +860NM +2016M
9/17 Montana +2702G +9.2PL



IHG CHRISTINA-ET VG-86 +2588G
7/16 Jett +2787G +2004M +70F +3.19T
7/16 Afterburner +2708G



T-SPRUCE JOSETTE GP-83 +2770G
9/17 Eldorado +2782G +923NM +2380M
9/17 Eldorado +2758G +853NM +99F



NO-FLA HANGOUT-ET +2765G
9/17 Eldorado +2787G +924NM +2363M



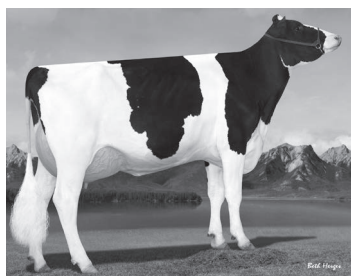
OCD CLASSIC-ET +2667G
8/17 Frazzled +2787G +952NM +92F +9.1PL
9/17 Bandares +2748G +883NM +10.1PL
8/17 Bandares +2726G +868NM +91F
10/17 King Royal +2720G +853NM +2.71T
8/17 Bandares +2703G +10.2PL



RI-VAL-RE HOPE-ET +2659G
8/17 Frazzled +2775G +920NM +2043M +90F



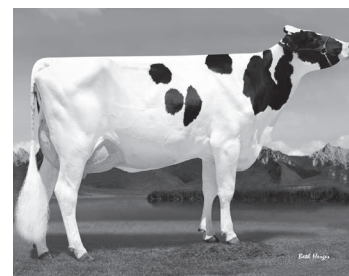
PEAK HAILEY-ET +2644G
6/17 Blowtorch +2771G +2.86T
6/17 Blowtorch +2731G +857NM



WEBB-VUE MYRIAD-ET VG-85 +2677G
6/16 AltaPAINTER +2769G +878NM +2.80T
1/17 Flagship +2702G +838NM



PINE-TREE SIRIUS-ET +2764G
9/17 AltaROBSON +2814G +877NM +4.0DPR



HIGHERRANSOM RACER GINA-ET GP-82 +2520G
5/17 Bandares +2712G +3.5DPR +159RZG
Sells with embryo contract



A-L-H HEIDI-ET +2821G
9/17 Outlast +2762G +920NM +91F
9/17 Eldorado +2758G +925NM +112F +56P
8/17 Alta24K +2720G +902NM +3.7DPR

- ♦ Come enjoy PEAK holiday cheer with snacks and refreshments!
- ♦ PEAK is offering over 100 lots of index cattle over +2700 GTPI and many over +157 RZG!
- ♦ Over 35 bred heifers and donor cows sell, all over +2600 GTPI!
- ♦ All donor cows will be on display and offered. Many have great flush records!
- ♦ "Intent to purchase" bids officially begin at noon on Dec. 14 and will be accepted prior to and at the beginning of the sale. Full details in the catalog.
- ♦ Sale will be broadcast via www.cowbuyer.com with real-time bidding to pre-approved buyers!
- ♦ View the online catalog at www.peak-genetics.com



Sales Force

Scott Culbertson
Jon Schefers
Mike Menendez
Andrew Hetke

507.923.1881
320.260.5436
845.598.8499
715.609.0134

Lloyd Simon
Steve Berland
Tom Cull
Chad Ryan

715.803.5696
507.254.5281
920.960.0350
920.960.1449



available to purchase

