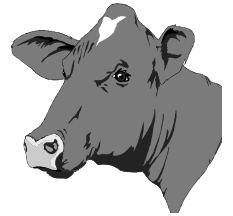




**MAPLEGRAND
FARM
COMPLETE
DISPERSAL**



SATURDAY OCTOBER 14, 2017

11:00 AM

ROBERT, JAMES & MELVIN IRWIN

139 JARVIS RD. —PERU, NY 12972

518-643-8962 —BOB'S CELL: 518-534-2219

150 HEAD OF REGISTERED HOLSTEINS!!!

100 COWS—25 BRED & OPEN HEIFERS— 25 YEARLINGS & CALVES

COWS ARE HOUSED IN TIE STALLS THEY GO OUT EVERYDAY

YOUNG CATTLE ARE RAISED IN LOOSE HOUSING

DHIA HERD AVG. 20744 3.8% 788 3.0 630 2X

OVER HALF THE HERD 1ST & 2ND LACTATION

CLASSIFICATION: 11 EX—36 VG—44 GP

BAA %: 107.0

HERD WILL BE CLASSIFIED PRIOR TO SALE.

93 HOMEBRED EXCELLENTS TO DATE!

- ⇒ **CLOSED HERD FOR OVER 20 YEARS**
- ⇒ **PEDIGREES FILLED WITH EX & VG COWS FOR GENERATIONS**
- ⇒ **FAMILIES WITH GREAT LONGEVITY**
- ⇒ **SIRES REPRESENTED : ATWOOD, SHOTTLE, AFTERSHOCK, GOLD CHIP WINDBROOK, BRAZZLE, MERIDAN, BYWAY AND MANY MORE TOP SIRES**

THIS IS A HERD THAT PROVIDES THE BUYER WITH OPPORTUNITY TO PURCHASE PROFITABLE DAIRY COWS . LOOKING FOR THAT SPECIAL ONE OR MAYBE THE BROOD COW TO ADD TO YOUR HERD, OR JUST WANT TO PICK UP A FEW COWS THAT WILL FILL THE BULK TANK. IT IS ALL HERE OCT. 14, 2017, THERE ARE VERY FEW CHANCES TO CAPITALIZE ON THE YEARS OF BREEDING THE PROFITABLE DAIRY COW THAT YOU WILL FIND AT MAPLEGRAND FARM.

ONLINE BIDDING



TERMS: CASH OR GOOD CHECK DAY OF SALE. NOTHING TO BE REMOVED TILL SETTLED FOR. BUYERS NOT KNOWN TO THE SALE MANAGER NEED A "BANK LETTER OF GUARANTEE" MADE PAYABLE TO DELARM & TREADWAY. THE CATTLE HAVE BEEN INOCULATED FOR SHIPPING FEVER, PREGNANCY CHECKED AND ARE TESTED FOR INTERSTATE SHIPMENT.

**BILL DELARM & SON
MALONE, NY
518-538-6494**

**SALE MANAGER
DELARM & TREADWAY
WWW.DELARM-TREADWAY.COM**

**E. J. TREADWAY
ANTWERP, NY
315-783-9857**