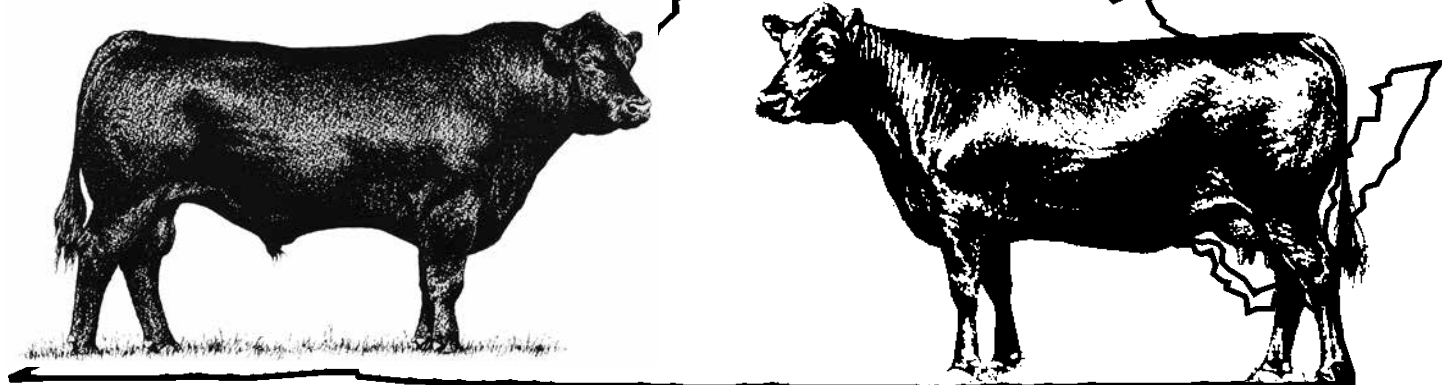


SOUTHWEST VIRGINIA'S FINEST ANGUS SALE



Saturday • December 3rd, 2016 • Noon
SALE SITE

Washington County Fairgrounds • Abingdon, VA

To All Beef Producers,

DEAR FRIENDS,

We invite you to be with us on Saturday, December 3 for the 2016 version of the Southwest Virginia Finest Angus Sale. This year we will be selling approximately 50 lots of registered Angus females, which consist of bred cows, bred heifers, open heifers and cow/calf pairs.

The fall group of yearling Angus bulls from the SWVAA Performance Test will sell first, followed by the registered females. Fifty-nine bulls were chosen to sell. They were all fed as a group at G&E Farms in Gretna, VA. They were weighed off test on 11/4/2016 and were evaluated by VDACS state graders. This is a good group of bulls from the SWVAA consignors. All of the bulls qualified under the Virginia Quality Assurance program and are designated with a VQA symbol underneath the EPDs. The bulls tested negative for TB and Brucellosis within 30 days prior to the sale. Negative BVD PI test at delivery on all bulls.

The sale starts at 12 noon with the bulls selling first. You are welcome to come by on Friday, December 2 in the afternoon or on Saturday morning prior to the sale to evaluate the cattle being offered for sale.

I encourage you to study the pedigrees and performance information on these cattle. Many selling are sired by some of the most proven bulls available in the breed. The consignors of these cattle offered in this sale have been in business for a number of years. They are offering some of their best genetics from which you may select. The EPDs and pedigrees along with individual performance, will assist you in making your selections.

We look forward to seeing you on Saturday, December 3. Please feel free to contact any of the consignors or the sale coordinator, George T. Johnstone, Jr. at 620-4901, or the sale auctioneer, Smith Reasor at 620-3123.

George T. Johnstone Jr.

1 BAR NUN GENERATION OF 3126

CONNEALY CONSENSUS 7229
 V A R GENERATION 2100
 SANDPOINT BLACKBIRD 8809
 G A R PROPHET
 B J PROPHET 3126
 B J PREDESTINED 9175

DOB 9/4/15
 Tatt 1514
 Reg. 18205833

CED	2
BW	3.6
WW	62
YW	111
M	41

Weight	BW	WW	ADG	YW
Ratio	72	756	3.73	1205
	110	103	113	105

VQA BULL

Consignor: **BAR NUN CATTLE CO.**

2 BAR NUN ALL IN 1512

A A R TEN X 7008 S A
 DEER VALLEY ALL IN
 DEER VALLEY RITA 0274
 CONNEALY CONSENSUS 7229
 BAR NUN BLACKCAP 1205
 BOBO BLACKCAP 0062

DOB 9/1/15
 Tatt 1512
 Reg. 18202396

CED	10
BW	.9
WW	55
YW	98
M	20

Weight	BW	WW	ADG	YW
Ratio	68	703	3.39	1144
	97	96	103	100

VQA BULL

Consignor: **BAR NUN CATTLE CO.**

3 DMB TEN VOLT 1195

A A R TEN X 7008 S A
 S A V TEN VOLT 3039
 S A V BLACKCAP MAY 1416
 S A V BRAND NAME 9115
 DMB MS BRANDY BLACKCAP 191
 DMB TOTAL LADY 298

DOB 9/26/15
 Tatt 1195
 Reg. 18245663

CED	2
BW	2.8
WW	52
YW	104
M	21

Weight	BW	WW	ADG	YW
Ratio	86	667	3.50	1158
	116	101	106	101

VQA BULL

Consignor: **DMB ANGUS**

4 G V G SUNRISE 5114

MCC DAYBREAK
 G A R SUNRISE
 G A R OBJECTIVE R227
 G A R PROPHET
 G A R PROPHET N1063
 G A R 5050 NEW DESIGN T159

DOB 10/1/15
 Tatt 5114
 Reg. 18483277

CED	11
BW	.6
WW	60
YW	110
M	31

Weight	BW	WW	ADG	YW
Ratio	64	640	4.55	1258
	95	92	138	109

VQA BULL

DDP
 Consignor: **GREEN VALLEY GENETICS**

5 HC UPWARD 151186487

SITZ UPWARD 307R
 HC UPWARD 107729
 HC MISS HYDRO 7729
 B&J AMBUSH 19D
 HC MISS BURGESS 1186487
 HC ERICA 86487

DOB 9/25/15
 Tatt 51A1
 Reg. 18526155

CED	9
BW	.4
WW	49
YW	84
M	27

Weight	BW	WW	ADG	YW
Ratio	77	763	3.75	1262
	99	102	113	110

VQA BULL

Consignor: **HAWKINSCREST**



A A R T E N X 7008 S A

6 HC WEIGHT UP 1512072T

DOB 9/22/15
Tatt 51C7
Reg. 18528751

SITZ UPWARD 307R
PLATTEMERE WEIGH UP K360
BARBARA OF PLATTEMERE 337
HC FINAL ANSWER 9093T
HC DONNA 12072T
H C EVERELDA ENTENSE 72T

CED	8
BW	.1
WW	62
YW	109
M	29

	BW	WW	ADG	YW
Weight	75	762	3.52	1242
Ratio	99	102	106	108

VQA BULL

Consignor: **HAWKINSCREST**



SITZ UPWARD 307R

7 HC TRUST 151395374

DOB 9/2/15
Tatt 51E9
Reg. 18527785

SCR PROMISE 4042
SYDGEN TRUST 6228
SYDGEN FOREVER LADY 4413
HOOVER DAM
HC HENRIETTA PRIDE 1395374
HC HENRIETTA PRIDE 95374

CED	5
BW	.4
WW	47
YW	90
M	26

	BW	WW	ADG	YW
Weight	72	710	4.18	1292
Ratio	101	95	126	112

VQA BULL

Consignor: **HAWKINSCREST**

9 JUSTAFEW UPSHOT 506

DOB 10/7/15
Tatt 506
Reg. 18483865

SITZ UPWARD 307R
EXAR UPSHOT 0562B
EXAR BARBARA T020
HARB PENDLETON 765 J H
JUSTAFEW PENDLTN BONNIE 001
JUSTAFEW BONNIE KAYE 111

CED	10
BW	.5
WW	51
YW	94
M	27

	BW	WW	ADG	YW
Weight	68	629	3.61	1098
Ratio	93	98	109	95

VQA BULL

Consignor: **JUSTAFEW ANGUS**

8 JUSTAFEW COUNSELOR 515

DOB 11/27/15
Tatt 515
Reg. 18483867

CONNELY MENTOR 7374
CONNELY COUNSELOR
JAZE OF CONANGA 234
LCC NEW STANDARD
JUSTAFEW NEW BONNIE 207
JUSTAFEW BONNIE KAYE 111

CED	11
BW	.4
WW	50
YW	92
M	26

	BW	WW	ADG	YW
Weight	70	644	3.43	1090
Ratio	97	100	104	95

VQA BULL

Consignor: **JUSTAFEW ANGUS**

10 LAWSONS HARVESTOR C810

DOB 11/26/15
Tatt C810
Reg. 18359233

S A V HERITAGE 6295
S A V HARVESTOR 0338
S A V EMBLYNETTE 7749
S A V FINAL ANSWER 0035
COLEMAN DONNA 1397
COLEMAN DONNA 708

CED	5
BW	2.7
WW	57
YW	106
M	25

	BW	WW	ADG	YW
Weight	90	678	3.27	1143
Ratio	110	98	99	99

VQA BULL

Consignor: **LAWSON FAMILY FARMS**

11 LAWSONS HARVESTOR C788

DOB 9/23/15
Tatt C788
Reg. 18359237

S A V HERITAGE 6295
S A V HARVESTOR 0338
S A V EMBLYNETTE 7749
O C C EMBLAZON 854E
SINCLAIR LADY 00E1 3410
SINCLAIR LADY 3410-4465

CED	-4
BW	4.4
WW	62
YW	116
M	27

Weight	BW	WW	ADG	YW
Ratio	84	706	3.68	1250
	101	102	111	109

VQA BULL

Consignor: **LAWSON FAMILY FARMS**

14 LUCAS UPWARD W538 5900

DOB 10/5/15
Tatt 5900
Reg. 18340511

SITZ UPWARD 307R
K C F BENNETT UPWARD W538
K C F MISS RETAIL PROD S480
GAR-EGL PROTEGE
LUCAS LADY PROTEGE 028F
K C F MISS KRUGERRAND H38

CED	1
BW	2.5
WW	56
YW	100
M	30

Weight	BW	WW	ADG	YW
Ratio	83	691	3.46	1207
	105	104	105	105

VQA BULL

Consignor: **LUCAS FARM/JOE LUCAS**

12 LAWSONS TOP GAME C784

DOB 9/8/15
Tatt C784
Reg. 18359232

GDAR GAME DAY 449
SITZ TOP GAME 561X
SITZ PRIDE 88I
S A V FINAL ANSWER 0035
LAWSONS LUCY Z340
BASIN LUCY S997

CED	4
BW	1.3
WW	57
YW	101
M	34

Weight	BW	WW	ADG	YW
Ratio	76	759	2.77	1162
	95	109	84	101

VQA BULL

Consignor: **LAWSON FAMILY FARMS**

15 LUCAS COMRADE 5890

DOB 10/5/15
Tatt 5890
Reg. 18452869

CONNEALY CONSENSUS 7229
CONNEALY COMRADE 1385
HAPPY GEE OF CONANGA 919
G A R PROPHET
LUCAS LADY PROPHET 350S
LUCAS LADY KCF UPWARD 1690

CED	10
BW	-.8
WW	58
YW	106
M	34

Weight	BW	WW	ADG	YW
Ratio	55	559	3.75	1060
	84	86	113	92

VQA BULL

Consignor: **LUCAS FARM/JOE LUCAS**

13 LAWSONS TOP GAME C780

DOB 9/2/15
Tatt C780
Reg. 18359236

GDAR GAME DAY 449
SITZ TOP GAME 561X
SITZ PRIDE 88I
COLEMAN REGIS 904
LAWSONS LADY Z322
COLEMAN LADY 8298

CED	13
BW	-.3
WW	60
YW	101
M	32

Weight	BW	WW	ADG	YW
Ratio	76	808	3.57	1283
	95	116	108	112

VQA BULL

Consignor: **LAWSON FAMILY FARMS**



GDAR GAME DAY 449

16 LUCAS UPWARD W538 5860

DOB 10/5/15

SITZ UPWARD 307R

Tatt 5860

K C F BENNETT UPWARD W538

Reg. 18340509

K C F MISS RETAIL PROD S480

CONNELY IN FOCUS 4925

CED	1
BW	3.0
WW	61
YW	107
M	30

LUCAS LADY INFOCUS 4925 218F

LUCAS LADY HRT 338 5043

Weight	BW	WW	ADG	YW
Ratio	70	629	3.71	1125
	100	110	112	98

VQA BULL

Consignor: **LUCAS FARM/JOE LUCAS**

19 LUCAS ALL IN 553S

DOB 9/12/15

A A R TEN X 7008 S A

Tatt 553S

DEER VALLEY ALL IN

Reg. 18452872

DEER VALLEY RITA 0274

K C F BENNETT QUALITY W445

LUCAS LADY QUALITY 226F

LUCAS LADY FINAL ANSWER 970N

CED	13
BW	-1.7
WW	59
YW	105
M	25

Weight	BW	WW	ADG	YW
Ratio	64	652	4.25	1217
	85	98	129	106

VQA BULL

Consignor: **LUCAS FARM/JOE LUCAS**

17 LUCAS UPWARD W538 5830

DOB 10/4/15

SITZ UPWARD 307R

Tatt 5830

K C F BENNETT UPWARD W538

Reg. 18476035

K C F MISS RETAIL PROD S480

K C F BENNETT PERFORMER

CED	1
BW	1.9
WW	50
YW	91
M	29

LUCAS LADY PERFORMER 712F

LUCAS PRINCESS 2B 7F4

Weight	BW	WW	ADG	YW
Ratio	77	620	4.27	1223
	97	93	129	106

VQA BULL

Consignor: **LUCAS FARM/JOE LUCAS**

20 LUCAS PROPHET 265S 520N

DOB 11/22/15

G A R PROPHET

Tatt 520N

LUCAS PROPHET 265S

Reg. 18340520

LUCAS LADY FINAL ANSWER 919F

RITO 5F11 OF RITA 8K51 FD

LUCAS LADY RITO 5F11 72J

LUCAS LADY GRID MAKER 4S28

CED	4
BW	2.8
WW	56
YW	95
M	30

Weight	BW	WW	ADG	YW
Ratio	80	710	3.75	1228
	103	103	113	107

VQA BULL

Consignor: **LUCAS FARM/TIM LUCAS**

18 LUCAS COMMONWEALTH 5780

DOB 10/2/15

K C F BENNETT ABSOLUTE

Tatt 5780

K C F BENNETT COMMONWEALTH

Reg. 18340498

K C F MISS QUALITY P164

N BAR EMULATION EXT

CED	5
BW	1.0
WW	46
YW	84
M	26

LUCAS LADY EXT 4036

LUCAS LADY VENTURE 1D29

Weight	BW	WW	ADG	YW
Ratio	75	652	3.95	1154
	96	98	119	100

VQA BULL

Consignor: **LUCAS FARM/JOE LUCAS**



K C F BENNETT ABSOLUTE

21 LUCAS COMMONWEALTH T5760

K C F BENNETT ABSOLUTE
K C F BENNETT COMMONWEALTH
K C F MISS QUALITY P164
G A R CONCRETE
LUCAS LADY CONCRETE T1610
V T NEW DESIGN X25

DOB 10/2/15
 Tatt 5760
 Reg. 18340497

CED	2
BW	2.0
WW	50
YW	92
M	31

Weight Ratio	BW	WW	ADG	YW
	82	669	4.66	1269
	105	101	141	110

VQA BULL

Consignor: **LUCAS FARM/ TIM LUCAS** DDP

22 LUCAS PROPHET T5740

C R A BEXTOR 872 5205 608
G A R PROPHET
G A R OBJECTIVE 1885
CONNELY IMPRESSION
LUCAS LADY IMPRESSION T0580
G A R RETAIL PRODUCT 3204

DOB 10/2/15
 Tatt 5740
 Reg. 18452882

CED	13
BW	-.5
WW	55
YW	101
M	31

Weight Ratio	BW	WW	ADG	YW
	70	598	4.11	1099
	89	90	124	96

VQA BULL

Consignor: **LUCAS FARM/TIM LUCAS**



G A R PROPHET

23 LUCAS UPWARD W538 M5730

SITZ UPWARD 307R
K C F BENNETT UPWARD W538
K C F MISS RETAIL PROD S480
CONNELY IMPRESSION
LUCAS LADY IMPRESSION M0530
VI GRID MAKER B23

DOB 10/2/15
 Tatt 5730
 Reg. 18340508

CED	3
BW	2.6
WW	61
YW	109
M	29

Weight Ratio	BW	WW	ADG	YW
	82	681	3.77	1213
	104	103	114	106

VQA BULL

Consignor: **LUCAS FARM/TIM LUCAS**

24 LUCAS 9M25 A352 M568S

RITO 9M25 OF RITA 5F56 PRED
K C F BENNETT 9M25 A352
K C F MISS IN FOCUS W64
G A R PROPHET
LUCAS LADY PROPHET M256S
LUCAS LADY IMPRESSION M0530

DOB 9/28/15
 Tatt 568S
 Reg. 18340523

CED	9
BW	0
WW	66
YW	115
M	32

Weight Ratio	BW	WW	ADG	YW
	75	724	3.98	1224
	99	109	122	107

VQA BULL

Consignor: **LUCAS FARM/TIM LUCAS**

25 LUCAS TOUR OF DUTY T556S

WERNER WAR PARTY 2417
R B TOUR OF DUTY 177
B A LADY 6807 305
G A R RETAIL PRODUCT
G A R RETAIL PRODUCT 3204
G A R 616 RITO 3561

DOB 9/19/15
 Tatt 556S
 Reg. 18452886

CED	11
BW	.5
WW	45
YW	92
M	32

Weight Ratio	BW	WW	ADG	YW
	65	574	3.84	1051
	85	83	116	91

VQA BULL

Consignor: **LUCAS FARM/TIM LUCAS**



R B TOUR OF DUTY 177

26 MATNEY SUNRISE 1593

G A R SUNRISE
 G A R SUNRISE 2153G

G A R PREDESTINED A057
 WERNER WAR PARTY 2417
 MATNEY PARTY-1381
 MATNEY CON 1163

	BW	WW	ADG	YW
Weight	70	769	3.04	1193
Ratio	98	102	92	104

CED	9
BW	0
WW	61
YW	112
M	32

**VQA
BULL**

DOB 10/24/15
 Tatt 1593
 Reg. 18419927
 Consignor: **MATNEY ANGUS FARM**

27 MATNEY SUNRISE 1591

G A R SUNRISE
 G A R SUNRISE 2153G

G A R PREDESTINED A057
 W H S LIMELIGHT 64V
 MATNEY LIME LIGHT 1370
 WHITSTONE LCE PRIDE D804

	BW	WW	ADG	YW
Weight	78	693	3.25	1098
Ratio	108	92	98	96

CED	4
BW	1.7
WW	57
YW	106
M	23

**VQA
BULL**

DOB 10/19/15
 Tatt 1591
 Reg. 18418786
 Consignor: **MATNEY ANGUS FARM**

28 MATNEY TOUR OF DUTY 1589

WERNER WAR PARTY 2417
 R B TOUR OF DUTY 177

B A LADY 6807 305
 G A R YIELD GRADE

MATNEY YG-1260

MATNEY PREDESTINED 1012

	BW	WW	ADG	YW
Weight	86	730	3.23	1155
Ratio	111	97	98	100

DOB 10/4/15
 Tatt 1589
 Reg. 18419993

CED	3
BW	4.1
WW	57
YW	103
M	26

**VQA
BULL**

Consignor: **MATNEY ANGUS FARM**

29 MATNEY TOUR OF DUTY 1587

WERNER WAR PARTY 2417
 R B TOUR OF DUTY 177

B A LADY 6807 305
 MATNEY 7601 OF T510

MATNEY 1116

MATNEY Y G 0882

	BW	WW	ADG	YW
Weight	70	755	3.20	1188
Ratio	89	100	97	103

DOB 9/19/15
 Tatt 1587
 Reg. 18419994

CED	11
BW	.2
WW	59
YW	99
M	33

**VQA
BULL**

Consignor: **MATNEY ANGUS FARM**

30 MATNEY WAR PARTY 1586

CONNEALY ONWARD
 WERNER WAR PARTY 2417

BAAR USA LADY JAYE 489
 MATNEY 7601 OF T510

MATNEY 1306-7601

MATNEY BLACKCAP 8046

	BW	WW	ADG	YW
Weight	80	814	3.39	1205
Ratio	109	108	103	105

DOB 9/16/15
 Tatt 1586
 Reg. 18419987

CED	0
BW	1.3
WW	55
YW	98
M	32

**VQA
BULL**

Consignor: **MATNEY ANGUS FARM**

31 MATNEY SHREK 1583

DOB 9/14/15

GAR-EGL PROTEGE

Tatt 1583

CONNELY SHREK 4242

Reg. 18419991

BLACK SHELL OF CONANGA 10

WERNER WAR PARTY 2417

CED	-9
BW	3.6
WW	72
YW	129
M	28

MATNEY 1320-PARTY

MATNEY MANDAN-1063

Weight	BW	WW	ADG	YW
Ratio	82	861	3.93	1388
	111	114	119	121

VQA BULL

Consignor: **MATNEY ANGUS FARM/
J&J FARM**

34 MATNEY WAR PARTU 1576

DOB 9/8/15

CONNELY ONWARD

Tatt 1576

WERNER WAR PARTY 2417

Reg. 18419984

BAAR USA LADY JAYE 489

G A R NEW DESIGN 5050

CED	4
BW	.9
WW	54
YW	102
M	34

MATNEY 1309-5050

MATNEY RIGHT TIME 0617

Weight	BW	WW	ADG	YW
Ratio	78	749	3.71	1183
	106	99	112	103

VQA BULL

Consignor: **MATNEY ANGUS FARM/J&J FARM** ^{DDC}

32 MATNEY SAFEGUARD 1582

DOB 9/13/15

G A R NEW DESIGN 5050

Tatt 1582

PA SAFEGUARD 021

Reg. 18419990

PA LORNA MARSHALL 2905-730

MATNEY 7601 OF T510

CED	-1
BW	1.7
WW	56
YW	98
M	32

MATNEY 1324-7601

MATNEY 4L60 8022

Weight	BW	WW	ADG	YW
Ratio	76	810	2.77	1176
	104	107	84	102

VQA BULL

Consignor: **MATNEY ANGUS FARM/
J&J FARM**



PA SAFEGUARD 021

33 MATNEY SHREK 1580

DOB 9/11/15

GAR-EGL PROTEGE

Tatt 1580

CONNELY SHREK 4242

Reg. 18418778

BLACK SHELL OF CONANGA 10

WERNER WAR PARTY 2417

CED	-6
BW	2.4
WW	63
YW	112
M	28

MATNEY 1307-PARTY

MATNEY PREDESTINED-1060

Weight	BW	WW	ADG	YW
Ratio	78	806	3.79	1280
	106	107	114	111

VQA BULL

Consignor: **MATNEY ANGUS FARM/
J&J FARM**

35 MATNEY SAFEGUARD 1574

DOB 9/6/15

G A R NEW DESIGN 5050

Tatt 1574

PA SAFEGUARD 021

Reg. 18418780

PA LORNA MARSHALL 2905-730

MATNEY 7601 OF T510

CED	7
BW	-.7
WW	50
YW	90
M	29

MATNEY 1302-7601

MATNEY MISS RITA 8003

Weight	BW	WW	ADG	YW
Ratio	72	772	3.14	1157
	99	102	95	101

VQA BULL

Consignor: **MATNEY ANGUS FARM/J&J FARM** ^{DDC}

36 MSA DIESEL POWER 5C15

DOB 10/17/15
Tatt 5C15
Reg. 18321799

PA POWER TOOL 9108
PA FULL POWER 1208
PINE VIEW SQR RITA W091
MCC DAYBREAK
MSA SHAWNEE OX8
MSA SHAWNEE 8U15

CED	10
BW	-1.1
WW	58
YW	106
M	31

	BW	WW	ADG	YW
Weight	58	700	2.79	1058
Ratio	85	102	84	92

VQA BULL

Consignor: **MOSSY SPRING ANGUS**



SITZ RAINMAKER 11127

37 MSA POWER TRAIN 5C10

DOB 9/10/15
Tatt 5C10
Reg. 18321797

PA POWER TOOL 9108
PA FULL POWER 1208
PINE VIEW SQR RITA W091
VPI COMANCHE 9W53 ET
MISS BLACKBIRD 2Z17
MSA BLACKBIRD 7T17

CED	0
BW	2.6
WW	62
YW	108
M	36

	BW	WW	ADG	YW
Weight	78	771	3.25	1172
Ratio	119	113	98	102

VQA BULL

Consignor: **MOSSY SPRING ANGUS**

39 M A F 16R67

DOB 11/20/15
Tatt 1667
Reg. 18334800

SITZ RAINMAKER 8075
SITZ RAINMAKER 11127
SITZ EMMA E 417L
F A R KRUGERRAND 410H
M A F 8Y7
M A F 4A7

CED	3
BW	1.9
WW	51
YW	100
M	29

	BW	WW	ADG	YW
Weight	74	658	3.52	1088
Ratio	97	88	105	95

VQA BULL

Consignor: **MULLINS ANGUS FARM**

38 MSA ALL IN ALL 5C9

DOB 9/5/15
Tatt 5C9
Reg. 18321796

A A R TEN X 7008 S A
DEER VALLEY ALL IN
DEER VALLEY RITA 0274
G A R PREDESTINED
MSA IMPERIAL LADY 9W1
VI T510 TRAVELER C27

CED	10
BW	.2
WW	59
YW	102
M	25

	BW	WW	ADG	YW
Weight	64	694	4.14	1211
Ratio	94	101	125	105

VQA BULL

Consignor: **MOSSY SPRING ANGUS**

40 M A F 16P66

DOB 11/20/15
Tatt 1666
Reg. 18301560

C R A BEXTOR 872 5205 608
G A R PROPHET
G A R OBJECTIVE 1885
SITZ UPWARD 307R
M A F 14U29
JUSTAFEW DESIGNER BONNIE 203

CED	7
BW	1.9
WW	61
YW	110
M	34

	BW	WW	ADG	YW
Weight	72	731	3.14	1142
Ratio	105	98	95	99

VQA BULL

Consignor: **MULLINS ANGUS FARM**

41

M A F 16R63

DOB 11/2/15

S A V FINAL ANSWER 0035

Tatt 1663

CONNELY RIGHT ANSWER 746

Reg. 18260758

HAPPY DELL OF CONANGA 262

CED	9
BW	.6
WW	59
YW	113
M	27

A A R TEN X 7008 S A

M A F 14X2

S F QUEEN 710 UPWARD

Weight	BW	WW	ADG	YW
Ratio	71	704	3.05	1171
	103	94	92	102

**VQA
BULL
OHP**

Consignor: **MULLINS ANGUS FARM**



S A V FINAL ANSWER 0035

42

M A F 16B53

DOB 9/25/15

S A V FINAL ANSWER 0035

Tatt 1653

S A V THUNDERBIRD 9061

Reg. 18260749

S A V EMBLYNETTE 7411

CED	7
BW	.8
WW	61
YW	109
M	24

SITZ UPWARD 307R

M A F 14U5

M A F 7Y6

Weight	BW	WW	ADG	YW
Ratio	67	725	3.71	1239
	99	100	112	108

**VQA
BULL**

Consignor: **MULLINS ANGUS FARM**

43

M A F 16R52

DOB 9/19/15

S A V FINAL ANSWER 0035

Tatt 1652

CONNELY RIGHT ANSWER 746

Reg. 18260748

HAPPY DELL OF CONANGA 262

CED	9
BW	1.5
WW	59
YW	107
M	28

WMR TIMELESS 458

M A F 13T24

M A F 10P9

Weight	BW	WW	ADG	YW
Ratio	73	804	2.82	1242
	101	91	85	108

**VQA
BULL**

Consignor: **MULLINS ANGUS FARM**

44

M A F 16R51

DOB 9/15/15

S A V FINAL ANSWER 0035

Tatt 1651

CONNELY RIGHT ANSWER 746

Reg. 18260747

HAPPY DELL OF CONANGA 262

CED	7
BW	.8
WW	59
YW	109
M	27

I C TOTAL 410

M A F 9T3

M A F 5W22

Weight	BW	WW	ADG	YW
Ratio	74	677	3.57	1130
	97	93	108	98

**VQA
BULL**

Consignor: **MULLINS ANGUS FARM**

45

M A F 16W48

DOB 9/7/15

SITZ UPWARD 307R

Tatt 1648

PLATTEMERE WEIGH UP K360

Reg. 18260744

BARBARA OF PLATTEMERE 337

CED	8
BW	1.1
WW	60
YW	110
M	31

HARB PENDLETON 765 J H

M A F 10P9

G V F ERICA 6171

Weight	BW	WW	ADG	YW
Ratio	74	832	3.45	1285
	99	94	105	112

**VQA
BULL**

Consignor: **MULLINS ANGUS FARM**

46

M A F 16R47

DOB 9/4/15

S A V FINAL ANSWER 0035

Tatt 1647

CONNELY RIGHT ANSWER 746

Reg. 18260743

HAPPY DELL OF CONANGA 262

A A R TEN X 7008 S A

CED	8
BW	.6
WW	68
YW	119
M	30

M A F 13X32

K A ELLUNA 9319

Weight	BW	WW	ADG	YW
Ratio	72	814	3.30	1277
	104	112	100	111

VQA BULL

Consignor: **MULLINS ANGUS FARM**



PLATTEMERE WEIGH UP K360

48

M A F 16W43

DOB 9/2/15

SITZ UPWARD 307R

Tatt 1643

PLATTEMERE WEIGH UP K360

Reg. 18260739

BARBARA OF PLATTEMERE 337

QUAKER HILL OBJECTIVE 3J15

CED	6
BW	1.2
WW	70
YW	121
M	31

M A F 8J20

JUSTAFEW DESIGNER BONNIE 002

Weight	BW	WW	ADG	YW
Ratio	74	924	3.45	1338
	99	105	104	116

VQA BULL

Consignor: **MULLINS ANGUS FARM/
LAURA ROBINSON**

49

M A F 16W42

DOB 9/1/15

SITZ UPWARD 307R

Tatt 1642

PLATTEMERE WEIGH UP K360

Reg. 18260738

BARBARA OF PLATTEMERE 337

CONNELY RIGHT ANSWER 746

CED	6
BW	.9
WW	74
YW	131
M	31

M A F 13R10

M A F 10T28

Weight	BW	WW	ADG	YW
Ratio	72	951	3.48	1407
	100	108	105	122

VQA BULL

Consignor: **MULLINS ANGUS FARM/
LAURA ROBINSON**

47

M A F 16W44

DOB 9/2/15

SITZ UPWARD 307R

Tatt 1644

PLATTEMERE WEIGH UP K360

Reg. 18260740

BARBARA OF PLATTEMERE 337

WAR ALLIANCE 9126 6006

CED	6
BW	1.1
WW	66
YW	119
M	28

M A F 11W22

BRANDY ROCK BLACKBIRD 1057

Weight	BW	WW	ADG	YW
Ratio	74	900	3.29	1363
	99	102	99	119

VQA BULL

Consignor: **MULLINS ANGUS FARM/
LAURA ROBINSON**

50

M A F 16U41

DOB 9/1/15

CONNELY ONWARD

Tatt 1641

SITZ UPWARD 307R

Reg. 18260737

SITZ HENRIETTA PRIDE 81M

S A V FINAL ANSWER 0035

CED	8
BW	.7
WW	58
YW	107
M	28

M A F 12F7

M A F 7W4

Weight	BW	WW	ADG	YW
Ratio	75	683	3.70	1198
	100	94	112	104

VQA BULL

Consignor: **MULLINS ANGUS FARM/
LAURA ROBINSON**

51 PVF PROPHET 6534

DOB 11/18/15

C R A BEXTOR 872 5205 608

Tatt 6534

G A R PROPHET

Reg. 18448410

G A R OBJECTIVE 1885

CED	7
BW	1.1
WW	57
YW	101
M	28

TC TOTAL 410

PVF TOTAL 653

RV LUCKY POWER PLAY

Weight	BW	WW	ADG	YW
	67	681	3.43	1144
Ratio	94	97	104	99

**VQA
BULL**

Consignor: **POOR VALLEY FARM**



G A R PROPHET

53 PVF DOUBLE BUBBLES 617

DOB 10/19/15

CONNEALY REFLECTION

Tatt 617

JINDRA DOUBLE VISION

Reg. 18447430

HOFF RACHEL 8312 405

CED	5
BW	1.9
WW	49
YW	89
M	29

DALTONS ALLIANCE 2237

LAZY ACRES BEAUTY 6115

V D A R BEAUTY 128

Weight	BW	WW	ADG	YW
	64	725	4.16	1158
Ratio	90	103	126	101

**VQA
BULL**

Consignor: **POOR VALLEY FARM**

54 SAF PROPHET 1537

DOB 9/25/15

C R A BEXTOR 872 5205 608

Tatt 1537

G A R PROPHET

Reg. 18448424

G A R OBJECTIVE 1885

B/R NEW FRONTIER 095

CED	14
BW	-.7
WW	60
YW	106
M	34

RX BEAUTY 614

J D C BEAUTY 192

Weight	BW	WW	ADG	YW
	78	680	3.77	1299
Ratio	96	110	114	113

**VQA
BULL**

Consignor: **SMITH ANGUS FARM**

52 PVF FULL POWER 6524

DOB 11/3/15

PA POWER TOOL 9108

Tatt 6524

PA FULL POWER 1208

Reg. 18448412

PINE VIEW SQR RITA W091

CED	7
BW	0
WW	47
YW	87
M	28

HARB PENDLETON 765 J H

PVF PENDLETON 652

RV LUCKY POWER PLAY

Weight	BW	WW	ADG	YW
	66	662	3.68	1189
Ratio	93	94	111	103

**VQA
BULL**

Consignor: **POOR VALLEY FARM**

55 GHS A390 5111

DOB 10/18/15

THE WEST VIRGINIAN X134

Tatt 5111

OFF NG A390

Reg. 18485030

OAK FRONT BANBANA 390

CED	7
BW	.1
WW	60
YW	106
M	29

SITZ UPWARD 307R

GHS RITA 213

VT 1407 NEW DESIGN Z6

Weight	BW	WW	ADG	YW
	74	618	4.07	1156
Ratio	103	115	123	101

**VQA
BULL**

Consignor: **STOVALL LIVESTOCK**

56

GHS 829 5100

GAR-EGL PROTEGE

DOB 10/8/15

Tatt 5100

Reg. 18484490

DALTONS PROTEGE 829

DALTONS BELLE ROSE 6268

L T 598 BANDO 9074

D R LADY 7625

COLE LADY C911

CED	7
BW	.5
WW	48
YW	86
M	28

	BW	WW	ADG	YW
Weight	62	695	3.21	1088
Ratio	93	129	97	95

VQA BULL

Consignor: **STOVALL LIVESTOCK**



GAR-EGL PROTEGE

57

GHS A390 538

THE WEST VIRGINIAN X134

DOB 9/14/15

Tatt 538

Reg. 18484488

OFF NG A390

OAK FRONT BANBANA 390

BOYD NEW DAY 8005

GHS ZARA 240

K A F MISS LADY 623

CED	9
BW	-1.3
WW	46
YW	85
M	23

	BW	WW	ADG	YW
Weight	69	548	3.73	1097
Ratio	96	102	113	95

VQA BULL

Consignor: **STOVALL LIVESTOCK**

58

GHS ALL IN 528

DOB 9/12/15

Tatt 528

Reg. 18505940

A A R TEN X 7008 S A

DEER VALLEY ALL IN

DEER VALLEY RITA 0274

S A V BISMARCK 5682

D R EILEEN 9679

D R EILEEN 5528

CED	13
BW	-1.0
WW	62
YW	107
M	21

	BW	WW	ADG	YW
Weight	69	550	3.82	1039
Ratio	92	102	116	90

VQA BULL

Consignor: **STOVALL LIVESTOCK**



YON FINAL ANSWER W494

59

GHS A489 519

DOB 9/9/15

Tatt 519

Reg. 18486857

YON FINAL ANSWER W494

YON FINAL ANSWER A489

YON SARAH U446

SITZ UPWARD 307R

GHS QUEEN B RITA 321

VT 1407 NEW DESIGN Z6

CED	11
BW	.2
WW	57
YW	108
M	31

	BW	WW	ADG	YW
Weight	65	572	2.95	1040
Ratio	97	106	89	90

VQA BULL

Consignor: **STOVALL LIVESTOCK**

60 BAR NUN PREDESTINED 1206

MYTTY IN FOCUS DOB 10/31/12
W H S LIMELIGHT 64V Tatt 1206
W H S PREDESTINED LASS 77I Reg. 17347507
G A R PERSPECTIVE
ECHO RIDGE GEORGINIA 2638
ECHO RIDGE GEORGINIA 1086

CED	11
BW	.6
WW	57
YW	102
M	22

COW DDC

Consignor: BAR NUN CATTLE CO.

This bred cow traces back to the well known Echo Ridge Program. She is loaded with phenotype and GAR genetics. She is due 3/22/17 to WR Journey 1X74 whose EPD's are +11 -1.3 +61 +106 +38 \$B +183.37. Confirmed to Journey. Safe in calf.

61 WILD WIND LUCY OC10 617

THREE TREES PRIME CUT 0145 DOB 12/9/10
BASIN CENTER CUT Tatt OC10
BASIN LUCY 178E Reg. 17621203
BOYD NEW DAY 8005
HHF BND LADY 378 617
HHF 878 LADY 133 378

CED	4
BW	2.0
WW	45
YW	88
M	24

COW DDP

Consignor: BAR NUN CATTLE CO.

This bred cow is all about production. She just weaned a 700 lb Deer Valley All In heifer that was retained in our herd. She is due 4/9/17 to KCF Bennett X48 whose EPD's are +11 -1.9 +54 +87 +23.



CONNELY BLACK GRANITE

62A HC BLACKCAP 159424

CONNELY CONSENSUS 7229 DOB 2/6/15
CONNELY BLACK GRANITE Tatt 59424
EURA ELGA OF CONANGA 9109 Reg. 18226138
B&J AMBUSH 19D
HC BLACKCAP 9424
W A F BANDO 4738

CED	11
BW	.6
WW	49
YW	86
M	24

COW

Consignor: D & J MEADE FARM

A calm easy-keeping Connealy Black Granite daughter. Bred to DJMF Pen 100 28 0515 whose EPD's are +2.0 +57 +96 +31. Due with heifer calf (confirmed by ultrasound) in early March 2017.

62B DJMF INTENSITY 1012 0915

G A R INGENUITY DOB 2/4/15
H P C A INTENSITY Tatt 0915
G A R PREDESTINED 287L Reg. 18204407
SITZ DASH 10277
GRAYSTONE BLACKBIRD 562
GRAYSTONE BLACKBIRD 488

CED	0
BW	3.6
WW	62
YW	111
M	27

COW

Consignor: D & J MEADE FARM

A moderate framed, quiet, easy-keeping H P C A Intensity daughter out of a Sitz Dash cow from the Blackbird cow family at Graystone Farm. Outstanding EPD's on this bred heifer. Bred to G A R Prophecy. Due with a bull calf (confirmed by ultrasound) in early February 2017.

62C DJMF BI GRANITE 20 0615

CONNELY CONSENSUS 7229 DOB 1/29/15
CONNELY BLACK GRANITE Tatt 0615
EURA ELGA OF CONANGA 9109 Reg. 18225269
H A IMAGE MAKER 0415
HC MISS ERICA'S IMAGE 8M4
H C MISS ERICA 103

CED	10
BW	1.0
WW	55
YW	93
M	26

COW

DDP

Consignor: D & J MEADE FARM

Another calm, easy-keeping Connealy Black Granite daughter out of an Image Maker cow. Bred to G A R Prophecy whose EPD's are -.2 +73 +127 +31. Due with a heifer calf (ultrasound) early February 2017.

63A DJMF CC717A 19A 1315

SYDGEN C C & 7

DOB 3/19/15

HC TRAVELER 1152H19

Tatt 1315

HC DATELINE 52H19

Reg. 18225268

MWS RITO 0D15 F014 3110

CED	-2
BW	3.3
WW	34
YW	66
M	24

MISS HT 091 3110 527

MISS MWS RITO 727 836 091

COW

Consignor: **D & J MEADE FARM**

A moderate framed, easy-keeping quiet granddaughter of SydGen C C & 7. Bred to Deer Valley All-In whose's EPD's are +12 -.1 +73 +126 +23 \$B +143.27. Due with bull calf (ultrasound) due early February 2017.



HARB PENDLETON 765 J H

63B DJMF PEN 100 67B 0415

HARB PENDLETON 765 J H

DOB 1/18/15

GRAYSTONE PENDLETON 100

Tatt 0415

GRAYSTONE FANIE 1001

Reg. 18204403

SAF INFOCUS 628

CED	6
BW	1.5
WW	42
YW	72
M	27

PVF INFOCUS 912

LAZY ACRES BEAUTY 6115

COW

Consignor: **D & J MEADE FARM**

A strong good growth heifer with eye appeal and an easy-keeper out of a Pendleton son and InFocus cow. Bred to Deer Valley All-In whose EPD's are +12 -.1 +73 +126 +23 \$B +143.27. Due with bull calf (ultrasound) in early February 2017.

64A DJMF PEN 100 53 1215

HARB PENDLETON 765 J H

DOB 2/22/15

GRAYSTONE PENDLETON 100

Tatt 1215

GRAYSTONE FANIE 1001

Reg. 18204405

BOYD NEW DAY 8005

CED	5
BW	1.6
WW	50
YW	87
M	25

H C ELLUNA NEW DAY 4123

V D A R ELLUNA 6150

COW

Consignor: **D & J MEADE FARM**

A moderate frame easy keeping daughter of Graystone Pendleton 100 and a Boyd New Day 8005 daughter. Bred natural service to DJMF All-In 1713 0815 whose EPD's are +.7 +68 +122 +28 \$B \$154.16. Bull calf due early March 2017 (confirmed by ultrasound).



SITZ IDENTITY 2575

64B DJMF 0412 1112 1015

SITZ IDENTITY 2575

DOB 2/9/15

DJMF IDENTITY 144 0412

Tatt 1015

GRAYSTONE BLACKBIRD 658

Reg. 18204406

SITZ RAINMAKER 11127

CED	3
BW	1.6
WW	57
YW	107
M	28

HC RAINMAKER 12659A

HC BANDO NEW DESIGN6487 659A

COW

Consignor: **D & J MEADE FARM**

A solid well-made, quiet daughter out of a Sitz Identity son. Bred to DJMF All-In 1713 0815 whose EPD's are +.7 +68 +122 +28. Bull calf due early March 2017 (confirmed by ultrasound).

65A DMB EMULOUS 925

HF KODIAK 5R
GAMBLES KODIAK 2512

DOB 2/18/15
 Tatt 925
 Reg. 18112316

GAMBLES SHADOE 1106
DMB MR BLACKLASS OF 5050 129
DMB MS EMULOUS 122
DMB MS SOLUTION 518

CED	12
BW	-1.4
WW	46
YW	76
M	21

COW

Consignor: DMB ANGUS

A nice bred heifer sired by Gambles Kodiak 2512 out of a dam that has been productive at DMB Angus. Bred AI on 4/15/16 to Whitestone Intuition C106 whose EPD's are +.2 +69 +123 +28 \$B +148.76. Then pasture exposed to Whitestone Intuition C106. Safe in calf four and a half months on 10/26/16.

65B DMB EMULOUS 325

HF KODIAK 5R
GAMBLES KODIAK 2512

DOB 2/7/15
 Tatt 325
 Reg. 18112319

GAMBLES SHADOE 1106
DMB MR UPWARD 111
DMB MS EMULOUS 333
DMB 1407'S MS EMULOUS 120

CED	7
BW	1.4
WW	47
YW	81
M	26

COW

DDC

Consignor: DMB ANGUS

Another nice bred heifer sired by Gambles Kodiak 2512. Her dam has worked well at DMB Angus. Pasture exposed to Whitestone Intuition C106 whose EPD's are +.2 +69 +123 +28 \$B +148.76. Safe in calf. Preg checked 10/26/16 four and a half months bred.

66 DMB MS MOONSHINE 152

G A R NEW DESIGN 5050
DMB MR BLACKLASS OF 5050 129

DOB 5/13/12
 Tatt 152
 Reg. 17325764

BOYD BLACKLASS C39-2118
M A BROADSIDE 1334-822
TC MOONSHINE 9087
TC MOONSHINE 3040

CED	10
BW	-.4
WW	46
YW	86
M	26

COW

Consignor: DMB ANGUS

Nice EPD's on this female whose dam was bred in the TC Ranch herd. A nice four-year old cow that sells with a 7/29/16 heifer calf is sired by Gambles Kodiak 2512. Sells pasture exposed to Rock Ridge Upshot B99 whose EPD's are +5 +1.8 +62 +114 +28. Safe in calf 45 days on 10/26/16.

67 GRAYSTONE BEROSA 375

A A R TEN X 7008 S A
GRAYSTONE TEN X41

DOB 6/26/15
 Tatt 375
 Reg. 18604252

GRAYSTONE BEROSA 301
S A F 598 BANDO 5175
GRAYSTONE BEROSA 943
GRAYSTONE BEROSA 9499

CED	5
BW	1.5
WW	50
YW	92
M	26

COW

Consignor: GRAYSTONE FARM

A granddaughter of the very popular A A R Ten X 7008 S A out of a dam sired by the Genex bull S A F 598 Bando 5175. Great EPD's on this member of the Berosa cow family. Sells open ready to breed to the bull of your choice.

68 GRAYSTONE BEROSA 537

A A R TEN X 7008 S A
GRAYSTONE TEN X41

DOB 6/26/15
 Tatt 537
 Reg. 18604253

GRAYSTONE BEROSA 301
S A F 598 BANDO 5175
GRAYSTONE BEROSA 943
GRAYSTONE BEROSA 9499

CED	5
BW	1.5
WW	50
YW	92
M	26

COW

Consignor: GRAYSTONE FARM

A nice set of twin heifers sired by Graystone Ten X41 who is being used in the Paradise Valley herd in Wytheville, VA. A member of the Berosa cow family. Sells open ready to breed to the bull of your choice.



A A R TEN X 7008 S A

69 GRAYSTONE PETUNIA 263

CONNELY ONWARD

DOB 4/4/13

SITZ UPWARD 307R

Tatt 263

SITZ HENRIETTA PRIDE 81M

Reg. 18604293

S A V 8180 TRAVELER 004

CED	5
BW	1.4
WW	54
YW	100
M	30

GRAYSTONE PETUNIA 159

GRAYSTONE PETUNIA 122

COW

Consignor: **GRAYSTONE FARM**

A nice three year old female with outstanding EPD's. She is a daughter of the popular Genex sire, Sitz Upward 307R out of a dam sired by Genex Masterpiece sire, S A V 8180 Traveler 004. She is a member of the Petunia cow family. She sells with a heifer calf born 11/4/16 sired by Graystone Priority 437.



HYLINE RIGHT TIME 338

70 EXAR BLACKCAP 1840

C F RIGHT DESIGN 1802

DOB 7/1/11

SUMMITCREST COMPLETE 1P55

Tatt 1840

SUMMITCREST ELBA 1M17

Reg. 16956962

G D A R TRAVELER 044

CED	7
BW	1.1
WW	34
YW	65
M	28

G A R 044 TRAVELER 2328

G A R PRECISION 2536

COW

Consignor: **GREEN VALLEY GENETICS**

EXAR Blackcap is a product of the embryo program at Express Ranches. She is a direct daughter of Summitcrest Complete 1P55 by a dam that is a flush sister to the Select Sires bull, G A R Gridmaker. We have retained two daughters that are going to make outstanding cows. 1840 is currently nursing another brood cow prospect born 10/1/16 by VPI Ledger 3A7. Sells open, fall vaccinated, and ready to breed to the bull of your choice.

72 K A F MISS EVERGREEN 010

LEACHMAN RIGHT TIME

DOB 3/23/10

HYLINE RIGHT TIME 338

Tatt 010

HYLINE PRIDE 265

Reg. 17013374

BON VIEW NEW DESIGN 878

G V F EVERGREEN 3160

G V F EVERGREEN 8207

CED	3
BW	2.6
WW	41
YW	78
M	19

COW

Consignor: **KING ANGUS FARM**

A proven cow that has a star-studded pedigree with the likes of EXT, Right Time, Right Time 338, New Design 036, New Design 878, The Gamma 85 cow, 8180, Evergreen 825 and GT Miss Traveler 58 cow. Sells with a bull calf at side born 10/10/16 by G V F Ten X 4064 whose EPD's are +1.5 +68 +125 +33 \$B +178.67.

71 44 BEAUTY 9324

B/R NEW DESIGN 036

DOB 1/6/09

G A R NEW DESIGN 5050

Tatt 9324

G A R PRECISION 706

Reg. 16391916

B/R DESTINATION 727-928

CED	-5
BW	3.2
WW	54
YW	97
M	29

B/R BEAUTY 6200

B/R BEAUTY 061

COW

Consignor: **GREEN VALLEY GENETICS**

A good solid production cow by the great G A R New Design 5050 from the 44 Farms program in TX. 9324 is a big framed, deep bodied cow in her prime production, that gave us an outstanding VAR Index heifer in 2015. She sells with a really nice bull calf at side by VPI Ledger 3A7, born 10/3/16. She sells open, fall vaccinated, and ready to breed to the bull of your choice.

73 K A F MISS BURGESS 926

SITZ ALLIANCE 6595

DOB 4/12/09

K A F ALLIANCE 401

Tatt 926

WOODHILL EVERGREEN 58-825

Reg. 16487951

SITZ ALLIANCE 6595

K A F MISS BURGESS 410

RAINBOW BURGESS MAID 904

CED	8
BW	-.6
WW	38
YW	78
M	22

COW

DDP

Consignor: **KING ANGUS FARM**

A productive low birth-weight, high maternal cow who descends from the Burgess cow family that was developed by the Randy Daniels family in Georgia. Bull calf at side born 10/1/16 by G V F Answer 2069 whose EPD's are -.6 +64 +117 +24.

74A LAWSONS EVERELDA 1503

GAR-EGL PROTEGE DOB 10/7/15
BALDRIDGE WAYLON W34 Tatt 1503
BALDRIDGE BLACKCAP T163 Reg. 18461720
S A V PIONEER 7301
LONE OAKS EVERELDA 9224
BT EVERELDA ENTENSE 271

CED	1
BW	1.9
WW	60
YW	104
M	25

COW

Consignor: **LAWSON FAMILY FARMS**

Great set of open heifers starting with this nice AI sired Baldrige Waylon W34 daughter. Going back to the great Everelda cow 1905. She's complete and will make a great addition in anyone's herd. Will AI to S A V Ten Speed before sale date.

74B LAWSONS DONNA 1502

EXAR UPSHOT 0562B DOB 9/18/15
EXAR DENVER 2002B Tatt 1502
EXAR ROYAL LASS 1067 Reg. 18461789
WULFFS EXT 6106
COLEMAN DONNA 1154
COLEMAN DONNA 989

CED	9
BW	1.1
WW	54
YW	96
M	31

COW

Consignor: **LAWSON FAMILY FARMS**

Another AI sired heifer by EXAR Denver 2002B bred out at Express Ranch. Goes back to one of our best cow families. Very maternal heifer here. Will AI to Coleman Venture 403 by sale day.

74C LAWSONS SOPHIE 1501

RITO 707 OF IDEAL 3407 7075 DOB 9/11/15
S A V REGISTRY 2831 Tatt 1501
S A V MADAME PRIDE 0075 Reg. 18456783
S A V BISMARCK 5682
LAWSONS SOPHIE Y213
LAWSONS SOPHIE W101

CED	4
BW	1.8
WW	46
YW	84
M	19

COW

Consignor: **LAWSON FAMILY FARMS**

Selling a AI sired heifer by the Accelerated Genetics bull, S A V Registry 2831. Another complete and outstanding heifer. Will AI before sale day to Coleman Venture 403.

75A LAWSONS LADY C818

COLEMAN REGIS 122 DOB 12/15/15
COLEMAN REGIS 356 Tatt C818
COLEMAN DONNA 063 Reg. 18359244
BASIN PAYWEIGHT 107S
LAWSONS LADY A495
KLR LADY 0259

CED	3
BW	2.3
WW	57
YW	98
M	25

COW

Consignor: **LAWSON FAMILY FARMS**

Nice heifer sired by our herd bull here at Lawson Family Farms that has done a super job back to Payweight dam. Great EPD's on this open heifer.

75B LAWSONS PRIDE C806

CONNEALY FINAL PRODUCT DOB 11/8/15
SITZ INVESTMENT 660Z Tatt C806
SITZ ELLUNAS ELITE 656T Reg. 18359234
D H D TRAVELER 6807
LAWSONS PRIDE X948
SITZ PRIDE 2188

CED	6
BW	1.4
WW	49
YW	97
M	30

COW

Consignor: **LAWSON FAMILY FARMS**

Selling an AI sired heifer by Sitz Investment 660Z going back to the Sitz Pride cow family bred in Montana. The X948 cow has done a great job and will be entering our donor cow program this December. Great EPD's on this open heifer.

75C LAWSONS HENRIETTA PRIDE C800

MF NET RETURN 8197 DOB 10/25/15
BUFORD FREQUENT FLYER Z888 Tatt C800
BUFORD ELBA 9000 Reg. 18359228
S A V 8180 TRAVELER 004
SHADY BROOK HENRIETTA 3532
SITZ HENRIETTA PRIDE 1510

CED	6
BW	2.2
WW	36
YW	64
M	21

COW

Consignor: **LAWSON FAMILY FARMS**

Nice pedigree heifer here going back to the Henrietta Pride family, you don't see but a few at Public Auction so take advantage of a great opportunity to buy one for your herd. Sells open.



SITZ UPWARD 307R

77A LAWSONS BURGESS B614

SITZ UPWARD 307R

DOB 10/15/14

ACE CROSS POINT 278

Tatt B614

SANDPOINT PRIDE 5027

Reg. 18052583

SITZ IDENTITY 2575

LAWSONS BURGESS Y278

YON BURGESS W300

CED	1
BW	2.7
WW	57
YW	104
M	25

COW

DDP

Consignor: LAWSON FAMILY FARMS

Super nice heifer bred due to calf end of January 2017 to S A V Testament 5218 whose EPD's are +1.5 +71 +124 +25, one of LFF's new herd sires. Pedigree on this heifer speaks for itself. Yon Burgess is a great cow family top to bottom. Great EPD's on this bred heifer.

76A LAWSONS SARAH C677

S A V HARVESTOR 0338

DOB 2/23/15

S A V INTERNATIONAL 2020

Tatt C677

S A V EMBLYNETTE 5483

Reg. 18232500

C R A BEXTOR 872 5205 608

CED	-2
BW	3.0
WW	60
YW	103
M	33

YON SARAH X435

YON SARAH N170

COW

77B DOUBLE R BAR ENCHANTRESSB351

CONNEALY REFLECTION

DOB 10/1/14

JINDRA DOUBLE VISION

Tatt B351

HOFF RACHEL 8312 405

Reg. 18144471

O C C EMBLAZON 854E

DOUBLER BAR ENCHANTRESS X144

N BAR ENCHANTRESS S C C 2X30

CED	10
BW	-.2
WW	46
YW	84
M	20

COW

Consignor: LAWSON FAMILY FARMS

Another super deep body heifer bred to calf AI on 3/1/17 to Select Sires and Lawson Family Farms herd sire Coleman Venture 403 whose EPD's are -1.7 +67 +113 +27. This heifer descends from the Sinclair Cattle Ranch. Calf sexed as bull calf.

76B LAWSONS DONNA C686

SITZ RAINMAKER 8075

DOB 2/17/15

SITZ RAINMAKER 11127

Tatt C686

SITZ EMMA E 417L

Reg. 18248924

S A V FINAL ANSWER 0035

CED	7
BW	.3
WW	52
YW	100
M	32

COLEMAN DONNA 1112

COLEMAN DONNA 386

COW

Consignor: LAWSON FAMILY FARMS

Super nice heifer bred to calf on 3/1/17 to one of the top selling bulls ever to sell at S A V in North Dakota, S A V Sensation 5615 whose EPD's are -.4 +62 +110 +26 \$B +154.98. This heifer's grandmother is the great Donna 386 and sired by the Great Genex S A V Final Answer 0035 bull. Calf sexed as heifer. Great EPD's on this bred heifer.



CONNEALY REFLECTION

78 JO 410 EUROTIA 235

BON VIEW NEW DESIGN 208

DOB 2/7/12

TC TOTAL 410

Tatt 235

TC ERICA EILEEN 2047

Reg. 17309541

STONE GATE BARDOLIER 6042

CED	2
BW	1.7
WW	46
YW	80
M	21

STONE GATE EUROTIA 8378

STONE GATE EUROTIA 6430

COW

OHP

Consignor: **LITTLE WILSON CREEK FARM**

A daughter of the proven Select Sires bull, TC Total 410 out of a dam from the Stone Gate Eurotia cow family. She sells pasture exposed to M A F 11F1, a son of the legendary S A V Final Answer 0035. M A F 11F1's EPD's are +8 +.3 +63 +102 +30. Breeding update sale day.



TC TOTAL 410

79 TCA RITA 811X

G A R RETAIL PRODUCT

DOB 11/4/11

CONNEALY MENTOR 7374

Tatt 811X

EXECUTA OF CONANGA 939

Reg. 17838615

W C C PRECISION E161 J239

CED	3
BW	1.6
WW	47
YW	85
M	20

B C C RITA J239 5430-5063

MAPLE LANE RITA 5430

COW

Consignor: **LITTLE WILSON CREEK FARM**

A daughter of the Select Sires bull, Connealy Mentor 7374 out of a donor cow at Triple C Farm in Meadowview, VA. She is pasture exposed to M A F 11F1, the son of S A V Final Answer 0035. M A F 11F1's EPD's are +8 +.3 +63 +102 +30. Breeding update sale day.

81 GRAYSTONE BEROSA 379

SITZ TRAVELER 8180

DOB 4/9/09

S A V 8180 TRAVELER 004

Tatt 379

BOYD FOREVER LADY 8003

Reg. 17898204

S A F 598 BANDO 5175

CED	2
BW	2.4
WW	47
YW	83
M	26

GRAYSTONE BEROSA 943

GRAYSTONE BEROSA 9499

COW

Consignor: **LITTLE WILSON CREEK FARM**

A daughter of the Genex Masterpiece sire S A V 8180 Traveler 004 out of a dam from the Berosa cow family. She sells pasture exposed to the son of the Legendary S A V Final Answer 0035, M A F 11F1 whose EPD's are +8 +.3 +63 +102 +30. Breeding update sale day.

80 LC 112 CONCRETE

S S OBJECTIVE T510 0T26

DOB 3/22/10

G A R CONCRETE

Tatt 112X

CHAIR ROCK GRID MAKER 4047

Reg. 16668016

FINKS 5522-6148

CED	1
BW	2.5
WW	54
YW	88
M	25

G A R 6148 EMULATION 108

G A R 6807 TRAVELER 93

COW

Consignor: **LITTLE WILSON CREEK FARM**

A daughter of the Select Sires bull, G A R Concrete out of a dam bred in the Gardiner Angus Ranch herd in Kansas. Nice EPD's on this proven producer. She sells pasture exposed to M A F 11F1 whose EPD's are +8 +.3 +63 +102 +30. Breeding update sale day.

82 LYN LEW ROSEVERA 19L

LEACHMAN BOOM TIME

DOB 1/10/09

TC BOOM TIME 434

Tatt 19L

TC QUALITY 7122

Reg. 16985471

BOYD NEW DAY 8005

CED	4
BW	1.7
WW	44
YW	78
M	24

LYN LEW ROSEVERA 53L

LYN LEW ROSEVERA 6L9

COW

DDP

Consignor: **LITTLE WILSON CREEK FARM**

Take a look at these proven producers being offered by Tim and Alice Vannoy of Mouth of Wilson, VA. A daughter of TC Boom Time 434 out of a dam from the Rosevera cow family. Lyn Lew females have always been popular at our SWVAA sales. Sells pasture exposed to M A F 11F1 who is the resident herd sire at Little Wilson Creek Farm. Breeding update sale day.

83A LUCAS LADY PROPHET 265S 642M

G A R PROPHET

DOB 3/26/16

LUCAS PROPHET 265S

Tatt 642M

LUCAS LADY FINAL ANSWER 919F

Reg. 18425660

K C F BENNETT COMMONWEALTH

CED	7
BW	.5
WW	58
YW	102
M	30

LUCAS LADY COMMONWEALTH 41J

LUCAS LADY VT OBJ 141A

COW

Consignor: **LUCAS FARM**

A nice young low birth weight heifer sired by a Prophet son, Lucas Prophet 265S. A lot of maternal strength in this pedigree. Solid EPD's. Sells open.

84A LUCAS LADY COMMONWEALTH T511N

K C F BENNETT ABSOLUTE

DOB 11/7/15

K C F BENNETT COMMONWEALTH

Tatt 511N

K C F MISS QUALITY P164

Reg. 18340506

K C F BENNETT UPWARD W538

CED	3
BW	1.7
WW	54
YW	101
M	33

LUCAS LADY UPWARD W538 T3700

VT RETAIL PRODUCT D78

COW

Consignor: **LUCAS FARM**

A nice young attractive heifer sired by KCF Bennett Commonwealth out of a dam sired by KCF Bennett Upward W538. This Commonwealth-Upward cross works very well for us making nice cows and bulls. Lots of power in this pedigree with Commonwealth, Upward and Retail Product. Sells open and ready to breed.

83B LUCAS LADY VT OBJ 632F

S S OBJECTIVE T510 OT26

DOB 2/20/16

VT OBJECTIVE DAF 802

Tatt 632F

VT 208 NEW DESIGN B36

Reg. 18452900

VT OBJECTIVE DAF 802

CED	12
BW	.1
WW	48
YW	94
M	28

LUCAS LADY VT OBJECTIVE 326M

LUCAS LADY ROCK ON 4F10

COW

Consignor: **LUCAS FARM**

A nice young low birth weight heifer sired by VT Objective. The VT Objective cattle make great cows. Sells open.

84B LUCAS LADY UPWARD W538 T5060

SITZ UPWARD 307R

DOB 10/27/15

K C F BENNETT UPWARD W538

Tatt 5060

K C F MISS RETAIL PROD S480

Reg. 18340513

HARB PENDLETON 765 J H

CED	5
BW	1.7
WW	53
YW	98
M	27

LUCAS LADY PENDLETON T0510

LUCAS LADY GRID MAKER T4S26

COW

Consignor: **LUCAS FARM**

A nice young heifer sired by KCF Bennett Upward out of a dam sired by the Genex bull HARB Pendleton 765 J H. The granddam of 5060 goes back to the VT Research herd. Sells open and ready to breed.

83C LUCAS LADY COMMONWEALTH T63J

K C F BENNETT ABSOLUTE

DOB 1/24/16

K C F BENNETT COMMONWEALTH

Tatt 63J

K C F MISS QUALITY P164

Reg. 18452894

G A R INGENUITY

CED	5
BW	.6
WW	48
YW	91
M	30

LUCAS LADY INGENUITY T410J

LUCAS LADY IN FOCUS T846O

COW

Consignor: **LUCAS FARM**

Another nice young low birth weight heifer sired by K C F Bennett Commonwealth out of a dam who is sired by the Select Sires bull G A R Ingenuity. Solid set of EPD's with a lot of maternal strength in this pedigree. Sells open.

84C LUCAS LADY COMMONWEALTH 561S

K C F BENNETT ABSOLUTE

DOB 9/25/15

K C F BENNETT COMMONWEALTH

Tatt 561S

K C F MISS QUALITY P164

Reg. 18340494

S A V 8180 TRAVELER 004

CED	2
BW	2.2
WW	48
YW	88
M	32

LUCAS LADY 004 758N

LUCAS LADY 1407 3029

COW

Consignor: **LUCAS FARM**

Another nice young heifer sired by K C F Bennett Commonwealth out of a dam sired by the Genex legend S A V 8180 Traveler 004. The dam of 561S is a powerful cow with a WR of 105 on 6 calves, YR 4 at 104 and IMF of 4 at 124. Another nice set of heifers that are similar in age, size and EPD's. Sells open and ready to breed.

85A LUCAS LADY PROPHET 5810

C R A BEXTOR 872 5205 608

DOB 10/4/15

G A R PROPHET

Tatt 5810

G A R OBJECTIVE 1885

Reg. 18452884

HARB PENDLETON 765 J H

CED	9
BW	1.7
WW	58
YW	106
M	33

LUCAS LADY PENDLETON 04J

LUCAS LADY IN FOCUS 7380

COW

Consignor: **LUCAS FARM**

A daughter of the very popular Select Sires bull G A R Prophet out of a dam sired by the Genex bull HARB Pendleton 765 J H. We have retained a full sister. Nice set of EPD's on this heifer. Sells open and ready to breed.

86A LUCAS LADY TRACTION 526F

SITZ TOP GAME 561X

DOB 2/18/15

JMB TRACTION 292

Tatt 526F

JMB EMULOTA 013

Reg. 18168955

G A R YIELD GRADE

CED	2
BW	3.0
WW	54
YW	98
M	33

LUCAS LADY YIELD GRADE 5051

LUCAS KATINKA 7M6

COW

Consignor: **LUCAS FARM**

A daughter of the Select Sires bull JMB Traction 292 out of a Yield Grade dam. 526F comes from a line of longevity producing cattle. Her dam and granddam were both solid producers at age eleven and fifteen respectively. 526F had a WR of 103, YR of 105 while posting a Ribeye ratio of 109. She was bred AI on 4/17/16 to the Select Sires calving ease bull GAR 100X. Examined safe.

85B LUCAS LADY ALL IN 5800

A A R TEN X 7008 S A

DOB 10/3/15

DEER VALLEY ALL IN

Tatt 5800

DEER VALLEY RITA 0274

Reg. 18452874

SUMMITCREST FOCUS 2U66

CED	11
BW	-.2
WW	57
YW	98
M	24

LUCAS LADY 2U66 3620

LUCAS LADY HRT 338 5F9

COW

Consignor: **LUCAS FARM**

A daughter of the very popular Select Sires bull Deer Valley All In out of a dam sired by the ABS calving ease bull Summitcrest Focus 2U66. The granddam of 5800 is a very powerful Hyline Right Time 338 daughter. The dam of 5800 was showed earning Reserve Angus Champion at several county fairs. This low birth weight calving ease heifer sells open and ready to breed.

86B LUCAS LADY TRACTION 524F

SITZ TOP GAME 561X

DOB 2/10/15

JMB TRACTION 292

Tatt 524F

JMB EMULOTA 013

Reg. 18168954

K C F BENNETT 208 T20

CED	4
BW	1.2
WW	65
YW	109
M	38

LUCAS LADY KCF T20 189D

LUCAS LADY GRID MAKER 5052

COW

Consignor: **LUCAS FARM**

Another nice daughter of the Select Sires bull JMB Traction 292 out of a heavy milking New Design 208 granddaughter. This Traction daughter posted a BR of 96, WR of 108, YR of 103 and ratioed 123 on IMF. A really nice bred heifer with a solid set of EPD's. The Traction cattle always ratio at the top of their contemporary group. She sells bred AI on 4/17/16 to the Select Sires calving ease bull CTS Remedy. Examined safe.

85C LUCAS LADY ALL IN 570S

A A R TEN X 7008 S A

DOB 9/30/15

DEER VALLEY ALL IN

Tatt 570S

DEER VALLEY RITA 0274

Reg. 18452873

CONNELLY CAPITALIST 028

CED	5
BW	2.3
WW	60
YW	104
M	21

LUCAS LADY CAPITALIST 315F

LUCAS LADY 004 728S

COW

Consignor: **LUCAS FARM**

Another daughter sired by the Select Sires bull Deer Valley All In out of a very attractive Connealy Capitalist dam. Nice set of heifers that are very similar in age, size and EPD's. She sells open and ready to breed.



DEER VALLEY ALL IN

87 LUCAS LADY UPWARD W538 T3840

SITZ UPWARD 307R
 K C F BENNETT UPWARD W538
 K C F MISS RETAIL PROD S480
 G A R GRID MAKER
 LUCAS LADY GRID MAKER T4S25
 V T EXT X72

DOB 10/26/13
 Tatt 3840
 Reg. 17706521

CED	5
BW	1.3
WW	52
YW	100
M	19

COW

Consignor: **LUCAS FARM**

A nice young cow sired by KCF Bennett Upward W358 out of a G A R Grid Maker dam that goes back to the great VT research herd at Virginia Tech. These Upward daughters make great heavy milking cows. She sells bred to KCF Bennett Commonwealth. Examined eight months safe on 11/11/16. Should have a calf at side by sale day.

88 LUCAS LADY RITO 5F11 931M

C A FUTURE DIRECTION 5321
 RITO 5F11 OF RITA 8K51 FD
 RITA 8K51 OF 3407 RITO 3X25
 RITO 6I6 OF 4B20 6807
 LUCAS LADY 6I6 4O37
 LUCAS LADY 2M18 F2

DOB 3/20/09
 Tatt 931M
 Reg. 16660728

CED	2
BW	2.3
WW	42
YW	71
M	28

COW

Consignor: **LUCAS FARM**

A granddaughter of C A Future Direction 5321 out of a Rito 6I6 of 4B20 6807 cow. 931M has been a solid producer for us with a Birth Weight ratio of 4-100, WWR 4-103. She sells bred to VT Objective DAF 802. Examined eight months safe on 11/11/16. Should calve in December.



CONNELY ONWARD

89 MSA ROSE 4B3

S S TRAVELER 6807 T510
 S S OBJECTIVE T510 OT26
 S S MISS RITA R011 7R8
 G A R PREDICTION
 MSA ROSE 0X34
 VPI ROSE 7T45

DOB 3/8/14
 Tatt 4B3
 Reg. 17852165

CED	8
BW	1.3
WW	56
YW	97
M	28

COW

Consignor: **MOSSY SPRING ANGUS**

This royally-bred, moderately-framed female by the ABS Global roster member, S S Objective T510 OT26, combines an individual birth ratio of 99 with an individual weaning ratio of 101. She is backed by a reliable, proven cow family that consistently provides low BW and superior nursing ratios. A maternal sister was a sale feature in the 2015 "More For Your Money" Sale and sold to William Thomas in Vilas, NC. 4B3 is due 2/16/17 to Genex's MILK and MB leader, PA Full Power 1208. Certified and accredited herd.

90 MSA MISS BLACKBIRD 2Z4

TC TOTAL 410
 POSS TOTAL IMPACT 745
 POSS BLACKCAP 5116
 QUAKER HILL OBJECTIVE 3J15
 MSA MISS BLACKBIRD 8U2
 E E E MISS BLACKBIRD 3N6

DOB 3/10/12
 Tatt 2Z4
 Reg. 17285475

CED	-3
BW	2.7
WW	65
YW	105
M	20

COW

Consignor: **MOSSY SPRING ANGUS**

Here is an impressive direct daughter of Poss Total Impact 745 with tremendous eye appeal, balance, and quality. Her genomic-enhanced EPD's reveal an elite ranking of 1, 4, and 10% for WW, YW, and \$W, respectively, among current dams. The dam of this female was a top producer recording an average weaning ratio of 101 on 4 progeny. 2Z4 is due 2/21/17 to SFA Trust 201-6229. Certified and accredited herd.

91 M A F 13U30

CONNELY ONWARD
 SITZ UPWARD 307R
 SITZ HENRIETTA PRIDE 81M
 BON VIEW NEW DESIGN 1407
 JUSTAFEW DESIGNER BONNIE 203
 JUSTAFEW BONNIE LASS 917

DOB 12/23/12
 Tatt 1330
 Reg. 17424966

CED	5
BW	2.3
WW	51
YW	98
M	31

COW

Consignor: **MULLINS ANGUS FARM**

A daughter of the proven Genex sire, Sitz Upward 307R out of a dam from the Bonnie cow family developed in the Justafew Angus herd. She sells bred 8 months along to M A F 11D16 whose EPD's are +10 +1.7 +57 +96 +27.



M A F 13R10

S A V FINAL ANSWER 0035

DOB 9/6/12

CONNELY RIGHT ANSWER 746

Tatt 10

HAPPY DELL OF CONANGA 262

Reg. 17331145

TC TOTAL 410

CED	6
BW	.9
WW	67
YW	117
M	33

M A F 10T28

IUSTAFEW DESIGNER BONNIE 203

COW

Consignor: **MULLINS ANGUS FARM**

A daughter of the popular Genex sire, Connealy Right Answer 746 out of a dam sired by the Select Sires bull TC Total 410. Outstanding EPD's on this young female from the Bonnie cow family. She sells bred 8 months along to the Mullins Angus resident herd bull M A F 11D16, a son of MCC Daybreak.



PVF FORTITUDE 128

GAR-EGL PROTEGE

DOB 11/8/15

PA FORTITUDE 2500

Tatt 128

G G CLARA 0171

Reg. 18448480

DALTONS ALLIANCE 2237

LAZY ACRES BEAUTY BELL 6114

CED	8
BW	1.2
WW	46
YW	82
M	30

LAZY ACRES BEAUTY BELL 238

COW

Consignor: **POOR VALLEY FARM**

A direct daughter of Genex's sire PA Fortitude 2500. She is a big bodied, deep-sided female with excellent EPD's. Sells open. Calfhood vaccinated.



M A F 12W9

SITZ ALLIANCE 6595

DOB 10/10/11

WAR ALLIANCE 9126 6006

Tatt 1209

WAR BANDO 6006 598 4053

Reg. 17078424

QUAKER HILL OBJECTIVE 3J15

CED	5
BW	1.6
WW	66
YW	110
M	34

M A F 8J20

IUSTAFEW DESIGNER BONNIE 002

COW

Consignor: **MULLINS ANGUS FARM**

A daughter of the Accelerated Genetics proven sire WAR Alliance 9126 6006. Outstanding EPD's on this proven producer from the Bonnie cow family. She sells bred 8 months along to M A F 11D16 whose EPD's are +10 +1.7 +57 +96 +27 \$B +108.94.



PVF DAYLIGHT 1Y3

G A R DAYLIGHT

DOB 10/30/15

ERF DAYLIGHT 3093

Tatt 1Y3

ECHO RIDGE ELBA 8637

Reg. 18447434

G A R ULTIMATE

VPI BEAUTY 1Y11

CED	8
BW	1.0
WW	48
YW	81
M	17

WHITESTONE BEAUTY 501R

COW

DDP

Consignor: **POOR VALLEY FARM**

Another nice granddaughter of GAR Daylight from a G A R Ultimate dam. Excellent EPD's on this heifer. Sells open. Calfhood vaccinated.



LYN LEW ROSEVERA 59L

CONNELY ONWARD

DOB 9/12/09

SITZ UPWARD 307R

Tatt 59L

SITZ HENRIETTA PRIDE 81M

Reg. 17188079

BOYD NEW DAY 8005

CED	2
BW	2.6
WW	55
YW	102
M	30

LYN LEW ROSEVERA 64L

LYN LEW ROSEVERA 2L9

COW

Consignor: **MULLINS ANGUS FARM**

A daughter of the popular Genex sire, Sitz Upward 307R out of a dam sired by the Genex Masterpiece sire, Boyd New Day 8005. She is a member of the Rosevera cow family and was bred in the Lyn Lew Performance herd in Dublin, VA. She sells bred 8 months along to M A F 11D16, the MCC Daybreak son.



PVF PROPHET 333

C R A BEXTOR 872 5205 608

DOB 9/10/15

G A R PROPHET

Tatt 333

G A R OBJECTIVE 1885

Reg. 18448403

SITZ UPWARD 307R

PVF UPWARD 33

CED	7
BW	1.5
WW	61
YW	110
M	33

D G F H3 OF 120-T510 184

COW

Consignor: **POOR VALLEY FARM**

This excellent heifer is a direct daughter of GAR Prophet from an Upward dam with great EPD's. Sells open. Calfhood vaccinated.

96A PVF DAYLIGHT 1825

G A R DAYLIGHT

DOB 1/24/16

ERF DAYLIGHT 3093

Tatt 1825

ECHO RIDGE ELBA 8637

Reg. 18565663

HARB PENDLETON 765 J H

CED	12
BW	-.1
WW	46
YW	81
M	20

PVF PENDLETON 182

D G F G18 OF 253-T510 184

COW

DDP

Consignor: POOR VALLEY FARM

Double digit CED EPD on this granddaughter of G A R Daylight from a HARB Pendleton 765 J H dam. A big growth heifer with a lot of length. Sells open. Calfhooed vaccinated.

97A POWELL QUEEN 5323

MCC DAYBREAK

DOB 12/14/15

QUAKER HILL RAMPAGE 0A36

Tatt 5323

QHF BLACKCAP 6E2 OF4V16 4355

Reg. 18324591

HOOVER DAM

QUAKER HILL QUEEN 3H46

QUAKERHILL QUEEN 6J83 OF 1L4

CED	10
BW	-.2
WW	67
YW	117
M	33

COW

Consignor: POWELL FARM

A daughter of the very popular ABS - Quaker Hill - Powell Farm bull known as Rampage. This Rampage daughter has outstanding EPD's; top 2% for WW, Top 2% for YW, Top 3% for Milk and \$B +155.18. Powell Farms always brings us some purebred prospects. Sells open.

96B PVF DAYLIGHT 361

G A R DAYLIGHT

DOB 1/10/16

ERF DAYLIGHT 3093

Tatt 361

ECHO RIDGE ELBA 8637

Reg. 18519119

WERNER WAR PARTY 2417

CED	10
BW	.2
WW	52
YW	90
M	25

BWA IMAGE MAKER OF WAR PARTY

WAF IMAGE MAKER 82843

COW

DDP

Consignor: POOR VALLEY FARM

Double digit CED EPD on this granddaughter of G A R Daylight and offering a pedigree rich in low birth genetics. Sells open. Calfhooed vaccinated.

97B POWELL RITA 5320

MCC DAYBREAK

DOB 11/19/15

QUAKER HILL RAMPAGE 0A36

Tatt 5320

QHF BLACKCAP 6E2 OF4V16 4355

Reg. 18289319

EXAR UPSHOT 0562B

BOBO RITA 3070

BOBO RITA 0001 OF RITA 7M78

CED	9
BW	1.9
WW	72
YW	124
M	31

COW

Consignor: POWELL FARM

A daughter of the Quaker Hill Rampage 0A36 bull out of the donor BoBo Rita 3070 cow. Her EPD's are outstanding; top 1% for WW, Top 1% for YW, Top 5% for Milk. Her \$B +174.83 is in the Top 1%. Sells open.

96C PVF FORTITUDE 342

GAR-EGL PROTEGE

DOB 11/27/15

PA FORTITUDE 2500

Tatt 342

G G CLARA 0171

Reg. 18519120

TC TOTAL 410

CED	10
BW	.1
WW	52
YW	96
M	22

PVF TOTAL 34

D G F H3 OF 120-T510 184

COW

Consignor: POOR VALLEY FARM

Another PA Fortitude 2500 daughter with a TC Total dam with double-digit CED. A very eye appealing stout-made female Sells open. Calfhooed vaccinated.



QUAKER HILL RAMPAGE 0A36

97C POWELL LADY 5311

CONNEALY CONSENSUS 7229

DOB 10/5/15

CONNEALY COMRADE 1385

Tatt 5311

HAPPY GEE OF CONANGA 919

Reg. 18244690

K C F BENNETT UPWARD W538

CED	15
BW	-2.3
WW	48
YW	90
M	36

LUCAS LADY UPWARD W538 3610

LUCAS LADY RITO 5F11 72I

COW

Consignor: POWELL FARM

A daughter of the popular Select Sires bull Connealy Comrade 1385 out of a dam bred in the Lucas Farm herd. She is a member of the Lady cow family. Good EPD's on this open heifer. Her Milk EPD is in the Top 1%.



MCC DAYBREAK

98A POWELL BLACKCAP 5309

WERNER WAR PARTY 2417

DOB 9/19/15

R B TOUR OF DUTY 177

Tatt 5309

B A LADY 6807 305

Reg. 18221715

MCC DAYBREAK

QUAKER HILL BLACKCAP 0A31

QHF BLACKCAP 6E2 OF4V16 4355

CED	10
BW	.8
WW	62
YW	119
M	34

COW

Consignor: POWELL FARM

A daughter of the popular ABS bull R B Tour of Duty 177 out of the donor cow Quaker Hill Blackcap 0A31. Outstanding EPD's; Top 1% for YW, Top 2% for Milk \$B +154.91 which is in the Top 3%. Powell Farms always brings the good ones. Sells open.

98C POWELL GAMMER 5307

MCC DAYBREAK

DOB 9/4/15

QUAKER HILL RAMPAGE 0A36

Tatt 5307

QHF BLACKCAP 6E2 OF4V16 4355

Reg. 18215273

CONNEALY EARNAN 076E

DEER VALLEY GAMMER 3822

DEER VALLEY GAMMER 9610

CED	1
BW	2.2
WW	70
YW	126
M	31

COW

Consignor: POWELL FARM

Another daughter of the popular Rampage bull whose progeny are highly sought after. Her dam is a donor cow for Powell Farms, Deer Valley Gammmer 3822 who is a granddaughter of Connealy Consensus. Outstanding EPD's that are Top 1% for WW, Top 1% for YW, Top 5% for Milk. \$B +181.04 which is in the Top 1% for the Angus breed. Sells open.

98B POWELL GAMMER 5308

MCC DAYBREAK

DOB 9/6/15

QUAKER HILL RAMPAGE 0A36

Tatt 5308

QHF BLACKCAP 6E2 OF4V16 4355

Reg. 18215276

CONNEALY EARNAN 076E

CED	8
BW	1.5
WW	75
YW	132
M	28

DEER VALLEY GAMMER 3822

DEER VALLEY GAMMER 9610

COW

Consignor: POWELL FARM

A daughter of the popular ABS - Quaker Hill - Powell Farm bull Quaker Hill Rampage 0A36 out of the donor Deer Valley Gammmer 3822. Her outstanding EPD's are in the Top 1% for WW, Top 1% for YW and her \$B +184.86 is also in the Top 1% for the Angus breed. Sells open. Front pasture kind here.

99 BURKS Y164 LADY JET 673A

G A R PREDESTINED

DOB 10/19/13

ACF PRIME NUMBER 9356

Tatt 673A

BAAR USA LADY JAYE 5047

Reg. 17802684

S A V MUSTANG 9134

TCF LADY JET Y164

THOMAS LADY JET 81086

CED	7
BW	1.7
WW	46
YW	78
M	27

COW

Consignor: POWELL FARM

A female bred in the Taylor Cattle Farm herd in Kentucky. A daughter of ACF Prime Number 9356 out of a dam from the Thomas Lady Jet cow family. Just a three year old female. She sells due 1/4/17 to Deer Valley Ten X 3014 whose EPD's are +16 -.9 +70 +122 +28 \$B +155.26.

100 QUAKER HILL LADY 3A72

BOYD NEW DAY 8005

DOB 10/8/13

MCC DAYBREAK

Tatt 3A72

MCC MISS FOCUS 134

Reg. 17730235

G A R NEW DESIGN 5050

CED	7
BW	1.2
WW	48
YW	90
M	25

QUAKER HILL IDEAL 9D2 7415

IDEAL 7415 OF 1418 4465

COW

DDP

Consignor: **POWELL FARM**

A daughter of the popular MCC Daybreak out of a dam sired by G A R New Design 5050. This young female was bred in the Quaker Hill Farm herd in Louisa, VA. She sells due 1/3/17 to Deer Valley Ten X 3014, the son of the legendary A A R Ten X 7008 S A.

102 QUAKER HILL PRIMROSE 3D11

B/R NEW DAY 454

DOB 8/25/13

TEHAMA 454 NEW DAY Z591

Tatt 3D11

TEHAMA PRATISSIA S553

Reg. 17803361

G A R PREDESTINED

SANDPOINT PRIMROSE 8864

MONARCH PRIMROSE S116

CED	-1
BW	1.4
WW	56
YW	85
M	26

COW

DDP

Consignor: **POWELL FARM**

Another young three year old bred in the Quaker Hill Farm herd. A granddaughter of B/R New Day 454 and G A R Predestined. She is a member of the Primrose cow family. She sells due to calve on 12/15/16 to the Ten X son, Deer Valley Ten X 3014 whose EPD's are +16 -.9 +70 +122 +28.

101 QUAKER HILL QUEEN RITA 3Y8

MYTTY IN FOCUS

DOB 9/18/13

S S FAST TRACK M719

Tatt 3Y8

S S MISS OBJECTIVE 0T26 5J5

Reg. 17740386

G A R NEW DESIGN 5050

CED	7
BW	0
WW	56
YW	99
M	30

CHAIR ROCK 5050 G A R 9065

CHAIR ROCK 1407 ND 5041

COW

DDP

Consignor: **POWELL FARM**

A daughter of the Accelerated Genetics bull S S Fast Track M719 out of a dam sired by the Select Sires bull G A R New Design 5050. Outstanding EPD's on this three year old female. Sells due to calf 2/24/17 to Deer Valley Ten X 3014 whose EPD's are +16 -.9 +70 +122 +28 \$B +155.26.

103 LUCAS LADY VT OBJ M327M

S S OBJECTIVE T510 0T26

DOB 3/13/13

VT OBJECTIVE DAF 802

Tatt 327M

VT 208 NEW DESIGN B36

Reg. 17533581

RITO 5F11 OF RITA 8K51 FD

LUCAS LADY RITO 5F11 T759N

VT GRID MAKER B23

CED	8
BW	1.2
WW	46
YW	84
M	28

COW

Consignor: **POWELL FARM**

A daughter of VT Objective DAF 802 who is a graduate of the SWVAA bull testing program. He has left many good progeny in the Lucas Farm herd. She descends from the Lucas Lady cow family. Powell Farms has brought some really nice young females for this sale. Sells due on 12/17/16 to Deer Valley Ten X 3014 whose EPD's are +16 -.9 +70 +122 +28 \$B 155.26.



S S FAST TRACK M719

104 QUAKER HILL BLACKBIRD 2Y12

MYTTY IN FOCUS

DOB 10/13/12

S S FAST TRACK M719

Tatt 2Y12

S S MISS OBJECTIVE 0T26 5J5

Reg. 17569545

BASIN FRANCHISE P142

QUAKER HILL BLACKBIRD 7B2

QUAKER HILL BLACKBIRD 5J15

CED	9
BW	.5
WW	53
YW	92
M	27

COW

Consignor: **POWELL FARM**

A daughter of the Accelerated Genetics bull S S Fast Track M719 out of a dam sired by Basin Franchise P142. She is a member of the Blackbird cow family. Great EPD's on this four year old. Sells due 5/20/17 to Powell Denver 5524 whose EPD's are +6 +1.4 +58 +104 +28 \$B +123.58. He is a son of the popular EXAR Denver 2002B bull.

105 **EDGEWOOD 273 OF 081 BEXTOR**

B A R EXT TRAVELER 205

DOB 10/6/12

C R A BEXTOR 872 5205 608

Tatt 273

CRA LADY JAYE 608 498 S EASY

Reg. 17536732

ALC BIG EYE D09N

CED	4
BW	2.9
WW	48
YW	86
M	30

EDGEWOOD JAUNTY 081

EDGEWOOD JAUNTY 828

COW

Consignor: **POWELL FARM**

A daughter of the Select Sires bull known as Bextor out of a dam sired by ALC Big Eye D09N. She comes from the Edgewood Jaunty cow family. Good EPD's on this proven producer bred in the Edgewood Angus herd in West Point, VA. She sells due on 4/11/17 to Powell Fast Track 4703 whose EPD's are +8 +1.5 +43 +83 +28 \$B +104.46.



S A V BISMARCK 5682

106 **JSK PRIDE 1219**

C H QUANTUM 6247

DOB 12/26/11

COLE CREEK BLACK CEDAR 46P

Tatt 1219

COLE CREEK CLOVA JUANADA 67

Reg. 17590420

LEACHMAN RIGHT TIME

CED	10
BW	.3
WW	38
YW	70
M	21

RBF PRIDE 7RP2 OF 0083 RT

HYLINE PRIDE 0083

COW

Consignor: **POWELL FARM**

A female sired by the Outcross bull Cole Creek Black Cedar 46P out of a dam sired by the Angus breed legend Leachman Right Time. She is a member of the Hyline Pride cow family. Sells due on 12/12/16 to Deer Valley Ten X 3014, the son of Ten X.

108 **B G S RITA 705**

G A R GRID MAKER

DOB 9/17/11

S A V BISMARCK 5682

Tatt 705

S A V ABIGALE 0451

Reg. 17177188

RAINBOW FRONTIER 968

CED	8
BW	1.2
WW	40
YW	72
M	20

B G S RITA 665

B G S RITA 201

COW

Consignor: **RAINBOW ANGUS**

A daughter of the popular Genex bull S A V Bismarck 5682 out of a dam from the Rita cow family. Homer Stout always consigns from the top-end of the Rainbow Farm herd. She sells with a heifer calf born 8/11/16 (BW 74 lbs) sired by G V F Right Answer 1185 whose EPD's are +1.5 +69 +117 +27.

107 **RAINBOW MISS 262**

TC FORTHRIGHT 9284

DOB 4/29/14

TC CANDID 161

Tatt 262

TC LASS 7002

Reg. 18038676

UT MR 1328

CED	3
BW	1.7
WW	53
YW	96
M	24

UT MISS 2620

UT MISS 2088

COW

Consignor: **RAINBOW ANGUS**

A nice first calf heifer with outstanding EPD's. She is a daughter of the proven TC Candid 161 out of a dam bred in the University of Tennessee herd. She sells with a 9/23/16 bull calf (BW 70 lbs) sired by S A V Bismarck 5682 whose EPD's are +12 -.1 +53 +90 +22 \$B +121.38.

109A **GHS ERICA 5130**

GAR-EGL PROTEGE

DOB 11/20/15

DALTONS RITO 1138 OF E24

Tatt 5130

DALTONS BELLE ROSE 6268

Reg. 18484487

LD REDIRECT 11

GHS ERICA T22 11 001

GHS ERICA 001 OF 561 ELIXIR

CED	4
BW	1.9
WW	50
YW	86
M	27

COW

OHP

Consignor: **STOVALL LIVESTOCK**

This heifer comes from the second of two very good flush brothers we used very hard and a big cow out of my oldest cow family who is still making good calves. Will be AI bred on 11/18/16 to KCF Bennett Absolute, the ABS calving ease standout.



GHS LASS 5131

SCHURRTOP E267 X687

DOB 11/20/15

OFF POUNDER W83

Tatt 5131

OAK FRONT JF EMPRESS 83

Reg. 18484486

CONNEALY CAPITALIST 028

W H S CAPITALIST LASS A5

W H S PREDESTINED LASS 77I

CED	6
BW	1.9
WW	40
YW	74
M	26

COW

STOVALL LIVESTOCK

Consignor:

Another good heifer out of the Kinsey bull and a cow who is a maternal sibling to the Select Sires bull W H S Limelight 64V. Buddy Shelton sells all of his Limelights and the sisters to him for top dollar because they work well. Will be AI bred on 11/18/16 to KCF Bennett Homestead, the ABS calving ease standout.



GHS EPIC EILEEN 5117

SCHURRTOP E267 X687

DOB 10/27/15

OFF POUNDER W83

Tatt 5117

OAK FRONT JF EMPRESS 83

Reg. 18484475

DALTONS PROTEGE 829

GHS EPIC EILEEN 172S

TOUCHSTONE EPIC EILEEN B445

CED	4
BW	1.9
WW	45
YW	82
M	27

COW

STOVALL LIVESTOCK

Consignor:

This heifer is the product of a very good bull we bought from the Kinseys and a cow that goes back to one of Dr. Lynn Wilson's donors. Her pedigree is that of a long life productive cow. Will be AI bred on 11/18/16 to KCF Bennett Absolute, the ABS calving ease standout.



GHS RITA 598

YON FINAL ANSWER W494

DOB 10/8/15

YON FINAL ANSWER A489

Tatt 598

YON SARAH U446

Reg. 18484481

HM TEN X 40U

GHS RITA 393

GHS RITA 015S 6EM6 T22

CED	9
BW	.6
WW	51
YW	95
M	26

COW

STOVALL LIVESTOCK

Consignor:

This heifer is the product of our Yon bull and a heifer out of a bull we purchased from Freddie Mullins with Kinsey's Oak Front Farms, her granddam is an embryo we purchased. Will be AI bred on 11/18/16 to KCF Bennett Homestead, the ABS calving ease standout.



GHS RITA 592

YON FINAL ANSWER W494

DOB 10/1/15

YON FINAL ANSWER A489

Tatt 592

YON SARAH U446

Reg. 18484480

CONNEALY RIGHT ANSWER 746

GHS RITA 37

GHS RITA 121S

CED	11
BW	.5
WW	55
YW	104
M	26

COW

STOVALL LIVESTOCK

Consignor:

This heifer is out of our clean up bull who had the highest CED in the sale we purchased him from. Her dam was out of a first calf heifer and her granddam is the product of embryo transfer. Will be AI bred on 11/18/16 to KCF Bennett Homestead, the ABS calving ease standout.



GHS RITA 526

S A V FINAL ANSWER 0035

DOB 9/12/15

K C F BENNETT ABSOLUTE

Tatt 526

THOMAS MISS LUCY 5152

Reg. 18486861

SITZ UPWARD 307R

GHS RITA 35

VT 1407 NEW DESIGN Z6

CED	8
BW	.6
WW	57
YW	107
M	25

COW

STOVALL LIVESTOCK

Consignor:

Great open heifer out of a first calf heifer. Her dam is the keeping kind who bred back on her first service as a two year-old. Big numbers and a current pedigree on this heifer. Will be AI bred on 11/18/16 to KCF Bennett Homestead, the ABS calving ease standout.



TAYLOR BLACK MIST A44

THREE TREES MILE HIGHER

DOB 2/27/13

WILLIAMS MILE HIGHER 100

Tatt A44

WILLIAMS SKYMERE 6151

Reg. 17473982

IC TOTAL 410

P J BLACK MIST 6186 918

G V F BLACK MISS 6186

CED	-6
BW	3.5
WW	63
YW	98
M	32

COW

TAYLOR ANGUS

Consignor:

Nice EPD's on this young female from Taylor Angus Farm. A daughter of Williams Mile Higher 100 out of a female from the Black Miss cow family. Sells with a 9/18/16 bull calf sired by M A F 1403, a son of Sitz Upward 307R. Bull calf's EPD's are +2.4 +64 +107 +33.



LIVE INTERNET BIDDING AT **www.cowbuyer.com**

- View/bid online in Real Time
- Registration is required. Please register at least one (1) hour prior to sale time at www.cowbuyer.com
- High Speed Internet is required. Slower speed will not permit you to bid and keep pace in real time.
- Terms: Purchasing online constitutes a legal contract and promise for payment of purchases. All purchases must be paid within ten (10) days of sale date and prior to load out or delivery of cattle purchased.
- Cowbuyer LLC is a service provider and is not responsible for the activity or inactivity of any technology, internet connection at the sale site or connection and technology of the bidders

For questions or information, contact:

Aaron Ray Tompkins – 336/363-4639, atompkin@vt.edu

Kinley Jones – 336-429-2869, jones.kinley@yahoo.com

2016 EXTRA BULL INFORMATION

LOT	FS	M	S	TS	SC	Rib Fat	Rump Fat	RE	%IM	\$W	\$B
1	5.8	4	3	14	37.5	.29	.25	13.0	7.09	68.73	148.75
2	5.7	3	2	14	40.0	.19	.30	12.9	2.35	61.50	102.53
3	5.8	4	3	14	38.0	.22	.27	15.5	1.95	39.71	132.89
4	7.1	3	3	14	38.0	.26	.34	13.1	4.43	62.18	173.12
5	5.5	4	3	15	40.5	.48	.57	11.4	5.51	48.71	29.34
6	6.5	4	3	15	38.5	.38	.46	14.9	4.82	59.53	99.69
7	5.7	4	3	15	36.5	.31	.37	14.5	4.29	43.56	85.91
8	5.8	3	3	14	37.0	.21	.21	12.3	3.71	45.75	83.17
9	5.1	4	3	15	35.5	.25	.21	13.2	3.12	49.53	110.55
10	6.3	3	3	13	35.0	.25	.23	13.3	2.24	53.03	108.10
11	5.7	4	3	14	40.0	.33	.32	14.2	2.77	53.74	142.24
12	4.8	4	3	14	32.5	.47	.58	12.3	5.52	63.92	145.10
13	5.7	4	3	15	36.5	.29	.23	14.8	5.39	70.33	144.44
14	6.4	4	3	15	36.5	.30	.29	13.5	6.02	51.05	148.28
15	4.9	3	3	14	36.5	.26	.40	12.3	6.17	61.11	125.48
16	4.9	3	3	14	39.0	.27	.41	13.7	3.56	52.86	141.68
17	6.4	3	3	14	38.0	.32	.33	13.5	3.48	45.77	119.16
18	4.8	3	3	14	38.0	.45	.52	13.2	4.96	45.37	111.65
19	6.4	3	3	14	36.5	.20	.15	11.8	3.48	52.99	107.15
20	7.2	3	3	15	30.5	.28	.26	14.7	3.18	54.52	116.57
21	7.3	4	3	15	39.0	.29	.36	13.2	5.28	43.48	148.32
22	6.1	4	3	14	35.0	.18	.17	13.8	3.80	57.54	88.31
23	6.8	4	3	15	36.0	.24	.26	13.7	3.17	50.25	127.15
24	6.3	4	3	15	36.0	.26	.35	13.9	3.91	65.52	108.96
25	4.9	3	3	14	32.5	.31	.27	13.3	3.04	46.09	101.70
26	6.3	4	4	15	34.0	.33	.39	12.6	4.10	65.70	141.81
27	5.5	3	4	13	35.0	.13	.13	12.7	3.43	50.45	152.22
28	5.6	4	2	14	40.0	.15	.15	13.3	3.61	44.05	149.18
29	5.7	3	4	14	36.5	.20	.22	14.1	3.80	66.47	113.93
30	5.4	3	3	14	41.5	.35	.49	11.9	5.20	62.98	104.05
31	6.4	4	3	14	40.0	.36	.30	14.3	4.30	66.65	144.51
32	5.9	4	3	14	35.5	.24	.32	13.6	4.40	62.62	100.48
33	6.3	3	3	14	41.0	.35	.38	12.9	5.74	65.92	135.00
34	5.8	4	3	14	36.5	.35	.43	11.0	4.16	68.36	128.31
35	6.0	4	3	14	35.0	.28	.25	13.8	4.74	59.86	122.13
36	5.8	3	4	13	36.0	.36	.39	13.9	4.85	60.24	99.15
37	6.6	4	3	14	42.5	.22	.25	14.8	3.33	59.33	92.83
38	6.0	3	4	13	39.0	.50	.58	12.5	6.73	54.20	129.50
39	6.7	3	3	13	36.0	.29	.17	12.7	3.70	46.28	126.05
40	5.7	3	4	13	33.0	.26	.46	12.7	5.17	57.99	89.17
41	5.5	3	3	14	36.0	.21	.22	11.8	4.30	50.29	81.78
42	5.2	4	3	14	38.5	.29	.32	11.8	3.63	52.15	91.74
43	6.2	4	3	14	40.0	.43	.48	12.7	4.00	52.74	112.28
44	4.9	4	3	14	38.0	.21	.22	11.6	2.54	53.21	113.11
45	7.1	4	3	15	37.5	.21	.16	13.6	3.32	55.59	135.69
46	6.3	3	3	14	38.5	.47	.33	12.5	5.68	63.91	89.34
47	5.7	3	3	14	38.0	.29	.46	14.4	5.46	57.99	155.20
48	6.8	4	3	14	42.0	.13	.16	13.2	2.94	70.27	129.65
49	6.7	3	3	14	38.5	.49	.51	14.3	5.67	67.34	126.84
50	6.2	3	3	14	42.0	.35	.30	11.4	3.76	52.55	125.28
51	5.9	3	3	14	37.0	.29	.34	16.0	4.64	53.15	76.59
52	6.2	4	3	14	37.5	.37	.38	17.4	5.43	45.75	90.80
53	6.8	4	3	14	37.5	.29	.27	14.5	4.78	44.44	100.99
54	6.5	4	3	15	37.0	.34	.41	14.0	4.46	73.91	105.88
55	5.5	4	3	14	32.0	.22	.29	12.3	3.28	65.04	118.51
56	5.4	3	3	14	39.0	.25	.29	11.6	2.75	46.59	128.15
57	5.1	3	3	14	36.5	.43	.40	12.8	4.90	52.20	68.86
58	6.1	3	3	14	32.5	.21	.21	11.3	3.83	54.22	112.26
59	5.5	3	3	14	31.0	.24	.22	11.5	3.64	62.36	131.70