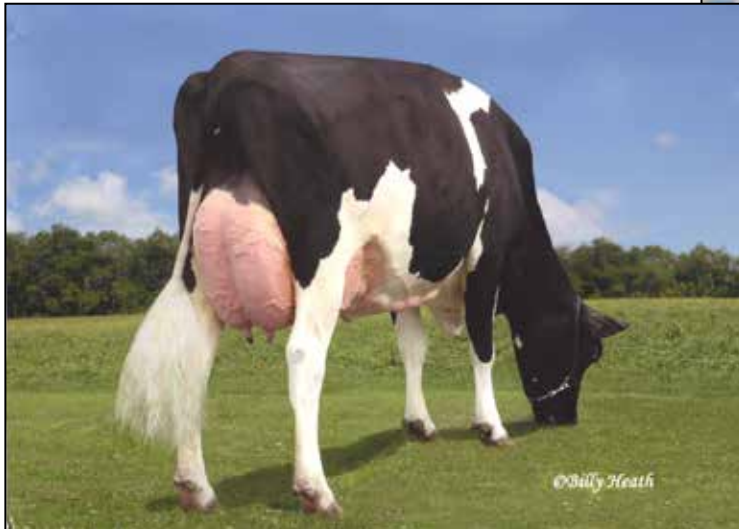


We Are . . .



**JULIE-ANN JAYZ QUEEN EX-93 EEEEE 2E**  
2ND DAM OF LOT 92



**JULIE-ANN COREY QUINITION**  
SELLS AS LOT 92



*Lot 92*

**JULIE-ANN COREY QUINITION**

840003135672715 99%RHA-NA \*TR \*TL \*TD  
Born: January 24, 2016  
12K GTPI +1922G

STOVER FARMS  
CARLISLE, PA 17013  
717-448-0747

**Even-Par Corey-ET**

71630805 \*CD \*TV \*TL \*TY \*TD  
PTA +614M +46F +21P 80R 8/16  
PTA +2.3PL 2.63SCS -.8DPR 8.2%DCE  
PTA +2.65T +2.28UDC +1.94FLC 79R 8/16  
GTPI +2228G

**Julie-Ann Extreme Quinta-TW**

71689485 98%RHA -NA Very Good-85  
1-11 2x 305d 23520 2.9 676 3.0 702

**Shema Jeeves Cameron-ET**

66747411 \*TV \*TL \*TY \*TD  
PTA +158M +10F -4P 99R 8/16  
PTA +1.15T +1.52UDC +1.52FLC GTPI +2063G

**Even-Par Alex Cienna-ET**

66758420 Excellent-93 EX-MS 2E GMD DOM  
3-08 2x 305d 33860 3.8 1281 2.9 990

**Mr Andis Altaextreme**

66960987 \*TV \*TL \*TY \*TD  
PTA -226M +5F -14P 98R 8/16  
PTA +1.98T +2.05UDC +.85FLC GTPI +1794G

**Julie-Ann Jayz Queen**

65641621 96%RHA-NA Excellent-93 EEEEE 2E  
5-11 2x 305d 33160 3.0 984 2.8 939  
2-11 2x 305d 31740 2.5 797 3.0 952  
3-11 2x 305d 29780 3.4 1023 3.0 891  
1-11 2x 305d 26080 3.4 892 3.0 790  
Life: 1548d 143730 3.2 4529 3.0 4319

*3rd Dam*

**Julie-Ann Rolex Quip VG-86 VG-MS**

3-08 2x 305d 29800 3.4 1020 3.1 938  
2-04 2x 305d 21750 3.9 848 3.1 675

*4th Dam*

**Julie-Ann Contibutor Quana VG-86**

3-03 2x 305d 25460 3.6 922 3.3 851  
Life: 1680d 126120 3.9 4918 3.3 4103