



OCTOBER 1, 2016

8:30 P.M. SALE

Wisconsin Dells, WI

AUCTIONEER

Chris Lundgren Cell: 920-517-8947

PEDIGREE READER

Steve McDonald Cell: 309-712-5969

All bids are in US dollars.

Buyers must pay purchase price to US Ayrshire Breeders' Association in US funds.

US Ayrshire Breeders' Association will assist with making contact between the buyer and seller.
Shipping arrangements will be made directly between the buyer and seller.

Buyer is responsible for all permit and shipping costs.



*The sale will be broadcast LIVE!
Watch and bid from anywhere online with this
service at www.cowbuyer.com*

Managed by:

AYRSHIRE BREEDERS' ASSOCIATION

1224 Alton Darby Creek Rd., Suite B, Columbus, Ohio 43228
Phone: 614-335-0020 • Fax: 614-335-0023 • E-mail: info@usayrshire.com



HAZCROFT GIGI GABRIELLA-ET, VG-89
 2-02 365D 24,953M 4.3% 1018F 3.0% 725P
DAM OF LOT 1



PALMYRA POKER GIGI-ET, EX-90
 4-05 337D 24,780M 3.7% 911F 3.1% 780P
GRANDDAM OF LOT 1



PALMYRA RAVEN S. GINGER, VG-89
 4-06 365D 35,760M 4.5% 1626F 2.9% 1101P
GREAT-GRANDDAM OF LOT 1

1

\$ _____

**EMBRYO PACKAGE
 VICKING X GABRIELLA**

VICKING X GABRIELLA MATING:
 PUREBRED AYRSHIRE

**SELLING 4 #1 EMBRYOS
 QUALIFY FOR EXPORT, INCLUDING NZ**

PALMYRA FARM & HANSON, DAVID + STEVEN
 18811 WAGAMAN RD
 HAGERSTOWN MD 21740
 301-722-9256

DE LA PLAINE VICKING-ET

107961868C
 PTA +2.69SCC +1.7PL -0.5DPR
 PTA +145M +23F +12P 49R
 PTA% +.08 +.04
 PTAT +1.10T 45R 8/16

HAZCROFT GIGI GABRIELLA-ET

PUREBRED AYRSHIRE 06/01/13 FEMALE
 72511709
 2-04 89 P8 +455
 NM\$ +126
 PTA +3.00SCC +1.7PL -0.8DPR
 PTA +383M +14F +0P 47R
 PTA\$ +126CY 8/16
 PTA% -.01 -.06
 PTAT +1.80T 49R 8/16
 PPA +1214M +54F -3P
 CLASS ST7 SR7 BD7 DF8 RA5 RW6 LS6 FA5
 FU9 UH9 UW8 UC9 UD8 TP5 TL4 LR6
 DHI % FAT % PRT
 2-02 2 305 19340 4.3 829 3.0 572
 365 24953 4.3 1018 3.0 725

THIRD DAM: PALMYRA RAVEN S. GINGER

100330199 6-03 89
 GOLD % FAT % PRT
 1-11 2 365 27710 3.0 841 3.0 842
 3-04 2 334 23170 3.2 749 3.0 701
 4-06 2 365 35760 4.5 1626 2.9 1052
 5-11 2 365 22720 4.0 899 2.9 670
 7-03 2 365 33490 4.3 1453 2.9 976
 LIFE 2484 166320 3.8 6358 3.0 4994

PALMYRA TRI-STAR BURDETTE-ET

100419568
 PTA +2.88SCC +1.2PL +0.2DPR
 PTA +261M +6F +14P 99R
 PTA% -.02 +.03
 PTAT +1.80T 98R 8/16
 D/AV 19864M 3.9 778F 3.2 630P 8.5T

FOREVER SCHOON PING

9591001C
 DHI % FAT % PRT
 2-03 2 305 16407 4.5 739 3.7 604
 365 19628 4.6 902 3.7 732
 3-08 2 305 23294 4.6 1060 3.5 805
 365 26989 4.6 1239 3.5 946

PALMYRA BENDIG BERKELY-ET

69261805
 PTA +3.06SCC +1.2PL +0.1DPR
 PTA -31M -2F -9P 91R
 PTA% -.04
 PTAT +1.00T 82R 8/16
 D/AV 19790M 4.0 785F 3.1 616P 8.4T

PALMYRA POKER GIGI-ET

65459562 4-07 90
 GOLD % FAT % PRT
 2-03 2 305 19810 3.8 850 3.1 605
 358 22110 4.3 951 3.1 682
 3-05 2 300 20780 3.4 708 3.0 631
 4-05 2 305 23690 3.6 857 3.1 737
 337 24780 3.7 911 3.1 780

2ND WINTER CALF - 2008 MID-ATLANTIC NAT'L
 1ST SR 2-YR-OLD - 2010 MID-ATLANTIC NAT'L
 NOM ALL-AMERICAN SR 2-YEAR-OLD - 2010
 3RD SR 3-YEAR-OLD - 2011 SOUTHERN NATIONAL



GRAND-VIEW BBBK DREAMER, EX-94 4E
 4-09 365D 24,310M 4.4% 1059F 3.3% 807P
 NOM ALL-AMERICAN AGED COW, 2015
 DAM OF LOT 2



GRAND-VIEW CALIMERO DEA-ET, EX-91
 2-00 365D 21,740M 4.0% 873F 3.2% 704P
 ALL-AMERICAN JR 3, 2014
 MATERNAL SISTER OF LOT 2

2

\$ _____

**EMBRYO PACKAGE
 BURDETTE OR DEMPSEY
 X DREAMER**

BURDETTE X DREAMER MATING:
 PUREBRED AYRSHIRE

DEMPSEY X DREAMER MATING:
 PUREBRED AYRSHIRE

SELLING 4 #1 EMBRYOS

**BURDETTE MATING - CONVENTIONAL
 DEMPSEY MATING - REVERSE SORTED**

POTENTIAL 9TH GENERATION EXCELLENT!

THIRD DAM: GRAND-VIEW OLY 2 DIVA, EX-90 2E

11-06 2 341 21660 4.1 885 2.9 632
 LIFE 3462 205340 4.1 8405 3.0 6067

FOURTH DAM: CHAPEL-HILL-AYR'S HELIGO DELET, EX-91

3-10 2 307 17400 3.5 615 3.0 518

FIFTH DAM: WILL-AYR'S DYNAMIC, EX-90 2E

9-06 2 365 20500 3.6 743 2.8 570

SIXTH DAM: WILL-AYR'S DESTINY, EX-90

5-04 2 273 18570 3.9 716 3.0 558

SEVENTH DAM: WILL-AYR'S DIZZY, EX-90

5-03 2 305 20420 3.9 769 3.2 648

EIGHTH DAM: WILL-AYR'S DUCHESS, EX-90

5-02 2 305 20910 4.3 735 3.4 567

BUSCH, TIMOTHY H. & KATIE
 N6470 HWY C
 CECIL WI 54111
 920-609-7476

PALMYRA TRI-STAR BURDETTE-ET

100419568
 PTA +2.88SCC +1.2PL +0.2DPR
 PTA +261M +6F +14P 99R
 PTA% -.02 +.03
 PTAT +1.80T 98R 8/16
 D/AV 19864M 3.9 778F 3.2 630P 8.5T

OR

MAPLE-DELL BURDETTE DEMPSEY-ET

P8 +476
 PTA +2.80SCC +2.3PL +0.5DPR
 PTA -235M +5F +9P 49R
 PTA% +.09 +.08
 PTAT +1.90T 49R 8/16

GRAND-VIEW BBBK DREAMER

PUREBRED AYRSHIRE 09/11/06 FEMALE
 100463697 9-03 94 4E P5 +394
 NM\$ -43
 PTA +3.08SCC +2.7PL -0.4DPR
 PTA -1056M -25F -19P 66R
 PTA\$ -43CY 8/16
 PTA% +.09 +.08
 PTAT +1.80T 73R 8/16
 PPA -2064M -12F -28P
 CLASS ST7 SR7 BD8 DF7 RA4 RW8 LS4 FA6
 FU6 UH7 UW7 UC7 UD5 TP6 TL6 LR7
 GOLD % FAT % PRT
 2-06 2 334 15770 4.5 702 3.4 531
 3-06 2 364 17560 3.6 640 3.3 581
 4-09 2 365 24310 4.4 1059 3.3 807
 6-08 2 365 23650 4.1 964 3.3 774
 8-08 2 365 26050 3.6 948 3.3 856
 LIFE 2053 116990 4.0 4687 3.3 3904

3RD FALL YEARLING - 2008 CENTRAL NATIONAL
 HM ALL-AMERICAN FALL YEARLING - 2008
 1ST - 2010 WDE INTERNAT'L FUTURITY
 NOM ALL-AMERICAN AGED COW - 2015
 WISCONSIN COW OF THE YEAR - 2016

PALMYRA TRI-STAR

150440
 PTA +2.85SCC -0.5PL -0.8DPR
 PTA +204M +4F +6P 96R
 PTA% -.02
 PTAT +.60T 94R 8/16
 D/AV 19676M 3.9 766F 3.1 616P 8.4T

PALMYRA RENO BETHANY-ET

100101191 3-06 90
 GOLD % FAT % PRT
 1-11 2 365 26925 3.9 1038 3.1 847
 3-01 2 365 30930 3.6 1104 3.3 1006
 4-08 2 365 35780 3.8 1374 3.1 1123
 LIFE 1551 120700 3.7 4496 3.2 3855

PALMYRA TRI-STAR BURDETTE-ET

100419568
 PTA +2.88SCC +1.2PL +0.2DPR
 PTA +261M +6F +14P 99R
 PTA% -.02 +.03
 PTAT +1.80T 98R 8/16
 D/AV 19864M 3.9 778F 3.2 630P 8.5T

MAPLE-DELL TRIDENT DEE-ET

100510791 8-07 94
 GOLD % FAT % PRT
 2-04 358 21010 4.7 984 3.6 749
 3-05 365 26890 4.5 1208 3.4 906
 4-09 2 365 22520 3.8 861 3.2 729
 6-06 2 365 30610 4.5 1392 3.3 1016
 7-10 2 320 20560 4.0 831 3.6 737
 LIFE 1928 126920 4.3 5497 3.4 4326

BLACKADDAR B B KELLOGG

777850C
 PTA +3.13SCC -0.3PL -0.3DPR
 PTA -936M -44F -21P 98R
 PTA% -.04 +.05
 PTAT +1.00T 97R 8/16
 D/AV 17810M 3.9 688F 3.2 569P

GRAND-VIEW CORNELIUS DRAMA

100261866 7-02 91
 GOLD % FAT % PRT
 2-03 2 236 12810 4.1 522 3.1 399
 305 16220 4.1 668 3.2 511
 312 16510 4.1 680 3.2 521
 3-03 2 268 13910 4.0 554 3.2 447
 4-03 2 305 17950 4.0 715 3.2 570
 5-06 2 305 21160 4.0 837 3.1 660
 314 21560 4.0 856 3.1 674
 6-06 2 279 21450 4.0 857 3.0 654



PALMYRA-RAGIMORE-EV B GIGI, EX-90
 3-02 365D 22,450M 4.5% 1003F 3.4% 754P
 DAM OF LOT 3



PALMYRA POKER GIGI-ET, EX-90
 4-05 337D 24,780M 3.7% 911F 3.1% 780P
 GRANDDAM OF LOT 3



PALMYRA RAVEN S. GINGER, VG-89
 4-06 365D 35,760M 4.5% 1626F 2.9% 1101P
 GREAT-GRANDDAM OF LOT 3

3 \$ _____

**EMBRYO PACKAGE
 PREDATOR X GIGI**

PREDATOR X GIGI MATING:
 PUREBRED AYRSHIRE

SELLING 4 #1 EMBRYOS

**FOURTH DAM:
 PALMYRA SATELLITE L GINGER, VG-86**
 6-00 2 298 25100 3.1 789 2.9 731

**FIFTH DAM:
 PALMYRA LINCOLN G. GINGER, EX-91**
 4-05 2 365 22340 3.2 726 3.0 679

SIXTH DAM: EX-90
 OVER 119,000M LIFETIME

PALMYRA FM CATTLE PART., EDMUND ELS,
 RAIGMORE TRUST, & BARTI VOLSCHEK
 18811 WAGAMAN RD
 HAGERSTOWN MD 21740
 301-722-9256

FOREVER SCHOON PREDATOR-ET

11119921C					
PTA	+2.78SCC	+0.5PL	-0.7DPR		
PTA	+779M	+38F	+24P	76R	
PTA%		+0.04	-0.01		
PTAT	+1.10T		60R	8/16	
D/AV	OM	OF		8.5T	

PALMYRA-RAGIMORE-EV B GIGI

PUREBRED AYRSHIRE		06/01/11 FEMALE	
70270039 3-08 90		P9 +499	
NM\$	+200		
PTA	+2.85SCC	+1.4PL	-0.7DPR
PTA	+550M	+17F	+16P
PTA\$	+200CY		8/16
PTA%		-0.02	-0.01
PTAT	+2.10T		59R
PPA	+1828M	+107F	+57P
CLASS	ST8 SR6 BD8 DF6 RA4 RW6 LS6 FA7		
	FU7 UH6 UW8 UC6 UD6 TP7 TL3 LR7		
GOLD		%	FAT % PRT
2-00	2 305	22600 4.3	966 3.3 748
	365	25910 4.3	1111 3.3 862
3-02	2 305	20380 4.5	922 3.4 685
	365	22450 4.5	1003 3.4 754

RANKED #44 ON 8/16 ELITE CPI LIST

RES JR CHAMPION - 2012 MID-ATLANTIC NAT'L
 RES ALL-AMERICAN SUMMER YEARLING - 2012
 INT CHAMPION - 2013 MID-ATLANTIC NATIONAL
 RES GRAND CHAMPION - 2013 MID-ATLANTIC
 NAT'L
 RES INT CHAMPION - 2013 SOUTHERN NATIONAL
 RES ALL-AMERICAN JR 2-YEAR-OLD (TIE) - 2013
 RES ALL-AMERICAN JR 3-YEAR-OLD - 2014

THIRD DAM: PALMYRA RAVEN S. GINGER, VG-89
 4-06 2 365 35760 4.5 1626 2.9 1101
 LIFE 2484 166320 3.8 6358 3.0 4994
 2X ALL-AMERICAN
 DAM OF GIBBS AT SELECT SIRES

PALMYRA TRI-STAR REALITY

100369452					
PTA	+3.00SCC	+1.4PL	+0.4DPR		
PTA	+451M	+25F	+5P	96R	
PTA%		+0.04	-0.05		
PTAT	+0.80T		94R	8/16	
D/AV	20696M	4.0	829F	3.1 638P	8.5T

FOREVER SCHOON PRETTY

7441960C					
DHI			%	FAT %	PRT
2-05	2 305	17130 4.8	825 3.5	608	
	313	17496 4.8	844 3.6	624	
3-05	2 305	20686 4.8	1001 3.8	778	
	342	22425 4.8	1082 3.8	849	
4-07	2 305	22646 4.4	1001 3.5	798	
	359	25064 4.4	1098 3.6	895	
6-07	2 305	23702 4.6	1102 3.3	794	
	365	26026 4.6	1206 3.4	884	

PALMYRA TRI-STAR BURDETTE-ET

100419568					
PTA	+2.88SCC	+1.2PL	+0.2DPR		
PTA	+261M	+6F	+14P	99R	
PTA%		-0.02	+0.03		
PTAT	+1.80T		98R	8/16	
D/AV	19864M	3.9	778F	3.2 630P	8.5T

PALMYRA POKER GIGI-ET

65459562 4-07 90					
GOLD		%	FAT %	PRT	
2-03	2 305	19810 4.3	850 3.1	605	
	358	22110 4.3	951 3.1	682	
3-05	2 300	20780 3.4	708 3.0	631	
4-05	2 305	23690 3.6	857 3.1	737	
	337	24780 3.7	911 3.1	780	

2ND WINTER CALF - 2008 MID-ATLANTIC NAT'L
 1ST SR 2-YEAR-OLD - 2010 MID-ATLANTIC NAT'L
 NOM ALL-AMERICAN SR 2-YEAR-OLD - 2010
 3RD SR 3-YEAR-OLD - 2011 SOUTHERN NATIONAL



FAMILY-AF-AYR CAL DOMINIQUE, EX-91
 4-01 305D 23,960M 4.1% 982F 3.0% 712P
 NOM ALL-AMERICAN JR 2-YEAR-OLD, 2013
 DAM OF LOT 4



FAMILY-AF-AYR CORNELIUS DAISY, EX-94 5E
 9-06 365D 25,650M 4.2% 1069F 3.2% 812P
 UNAN ALL-AMERICAN AGED COW, 2007
 THIRD DAM OF LOT 4



FAMILY-AF-AYR DK DESIREE, EX-95 4E
 13-03 365D 27,700M 4.1% 1122F 2.9% 794P
 ALL-AMERICAN 5-YEAR-OLD, 2002
 FOURTH DAM OF LOT 4

4

\$ _____

**EMBRYO PACKAGE
 REMINGTON X DOMINIQUE**

REMINGTON X DOMINIQUE MATING: 97.685% AYRSHIRE

SELLING 4 #1 EMBRYOS

FOURTH DAM: FAMILY-AF-AYR DK DESIREE

1020932	12-02	95	4E		
11-01	2	365	26070	3.5	917 2.9 766
13-03	2	365	27700	4.1	1122 2.9 794
LIFE	3272	183150	3.8	6990	3.1 5614

RES GRAND CHAMPION - 2002 CENTRAL NATIONAL
 GRAND CHAMPION - 2002 CENTRAL NATIONAL JR
 ALL-AMERICAN 5-YEAR-OLD - 2002
 JR ALL-AMERICAN 5-YEAR-OLD - 2002
 NOM JR ALL-AMERICAN AGED COW - 2004
 NOM ALL-AMERICAN AGED COW - 2004

FAMILY-AF-AYR FARM LLC
 GREG BORCHARDT FAMILY
 2880 KRUPKE RD CALEDONIA IL 61011
 815-765-2506

MAPLEBURN REMINGTON-ET

10316238C					
PTA	+3.12SCC	+0.5PL	+0.3DPR		
PTA	-722M	-45F	-18P	91R	
PTA%		-.09	+.02		
PTAT	+1.20T		84R	8/16	
D/AV	17718M	3.7	664F	3.2	571P

FAMILY-AF-AYR CAL DOMINIQUE

95.37% AYRSHIRE	06/18/11	FEMALE			
100620939			95.37%		
	4-01	91	P8	+447	
NM\$	+17				
PTA	+2.90SCC	-0.9PL	+0.9DPR		
PTA	-54M	+3F	+1P	52R	
PTA\$	+17CY			8/16	
PTA%		+.03	+.02		
PTAT	+1.60T		56R	8/16	
PPA	+911M	+48F	+22P		

CLASS	ST9	SR8	BD9	DF8	RA5	RW8	LS6	FA5
	FU7	UH7	UW9	UC7	UD5	TP5	TL4	LR8
GOLD					%	FAT	%	PRT
2-01	2	365	20810	4.1	851	3.3	684	
4-01	2	305	23960	4.1	982	3.0	712	

NOM ALL-AMERICAN JR 2-YEAR-OLD, 2013

THIRD DAM: FAMILY-AF-AYR CORNELIUS DAISY

100136647	14-10	94	5E		
7-07	2	365	23600	3.9	932 3.3 775
9-06	2	365	25650	4.2	1069 3.2 812
11-05	2	365	21640	3.9	853 3.1 670
LIFE	3867	222570	4.2	9262	3.3 7295

RES GRAND CHAMPION - 2002 CENTRAL NAT'L JR
 RES ALL-AMERICAN SR 2-YEAR-OLD - 2002
 RES JR ALL-AMERICAN SR 2-YEAR-OLD - 2002
 ALL-AMERICAN SR 3-YEAR-OLD - 2003
 JR ALL-AMERICAN SR 3-YEAR-OLD - 2003
 RES GRAND CHAMPION - 2004 CENTRAL NAT'L JR
 RES ALL-AMERICAN 4-YEAR-OLD - 2004
 JR ALL-AMERICAN 4-YEAR-OLD - 2004
 1ST 5-YEAR-OLD - 2005 CENTRAL NATIONAL JR
 RES GRAND CHAMPION - 2005 CENTRAL NAT'L JR
 GRAND CHAMPION - 2007 CENTRAL NATIONAL
 UNAN ALL-AMERICAN AGED COW - 2007
 NOM ALL-AMERICAN AGED COW - 2009

BLACKADDAR B B KELLOGG

777850C					
PTA	+3.13SCC	-0.3PL	-0.3DPR		
PTA	-936M	-44F	-21P	98R	
PTA%		-.04	+.05		
PTAT	+1.00T		97R	8/16	
D/AV	17810M	3.9	688F	3.2	569P

DE KOPPEL BBH PIA

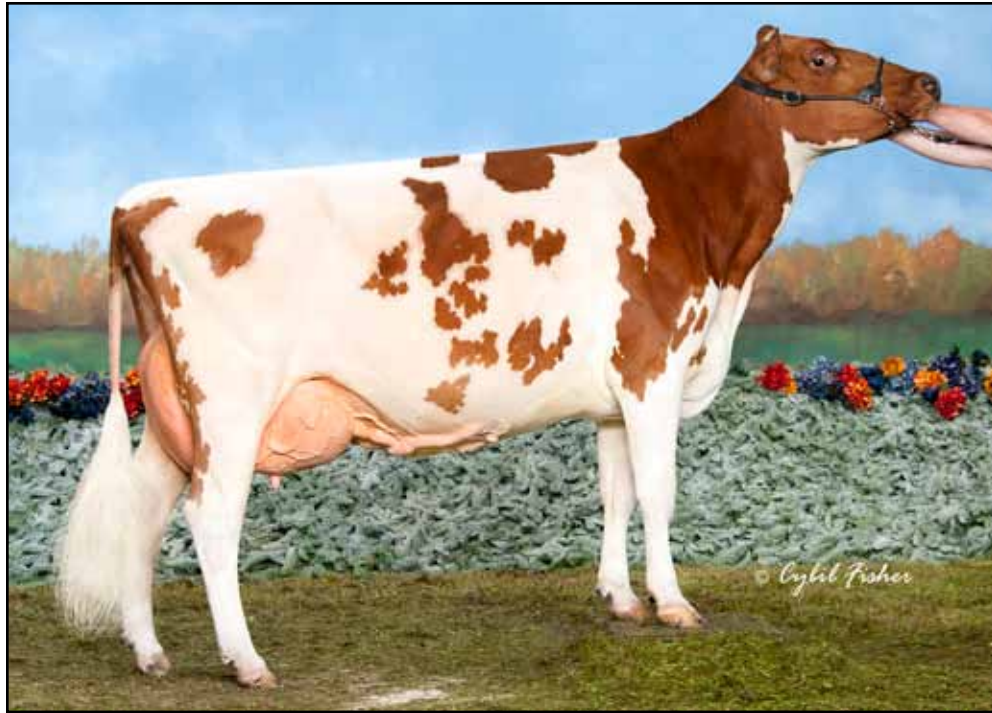
800898C					
DHI			%	FAT	% PRT
5-00	2	305	23160	3.6	831 3.0 705
6-00	2	304	23710	3.8	897 3.0 721
7-00	2	305	27810	3.6	996 3.1 862

MARGOT CALIMERO

10310847C					90.75%
PTA	+3.05SCC	-1.4PL	+0.4DPR		
PTA	-379M	+0F	-3P	97R	
PTA%		+.08	+.05		
PTAT	+1.10T		94R	8/16	
D/AV	19462M	4.0	770F	3.2	621P 8.6T

FAMILY-AF-AYR SOLDIER DAINTY

100421576	4-02	90			
GOLD				%	FAT % PRT
2-09	2	305	17130	4.2	711 3.3 563
			348	19040	4.2 803 3.3 630
4-00	2	305	20130	4.7	940 3.3 660
			365	22040	4.6 1021 3.3 721
5-09	2	201	12210	4.0	486 3.0 365
9-02	2	305	16080	4.1	658 3.1 500
			365	18230	4.1 744 3.1 574



SUNNY-ACRES RIGGINS RAMONA, EX-93
 4-00 305D 24,750M 3.9% 976F 2.9% 715P
 RES ALL-AMERICAN 4-YEAR-OLD, 2015
 DAM OF LOT 5

5

\$ _____

**EMBRYO PACKAGE
 VICKING X RAMONA**

VICKING X RAMONA MATING: 96.295% AYRSHIRE

SELLING 4 #1 EMBRYOS

EVANS, KATHRYN B.
 4106 DAVENPORT RD
 GEORGETOWN NY 13072
 315-837-4777

DE LA PLAINE VICKING-ET

107961868C
 PTA +2.69SCC +1.7PL -0.5DPR
 PTA +145M +23F +12P 49R
 PTA% +.08 +.04
 PTAT +1.10T 45R 8/16

SUNNY-ACRES RIGGINS RAMONA

92.59% AYRSHIRE 08/12/11 FEMALE
 100628085 92.59%
 4-00 93 P- +396
 NM\$ -47
 PTA +3.16SCC +0.1PL +0.8DPR
 PTA -52M -4F -8P 50R
 PTA\$ -47CY 8/16
 PTA% -.01 -.03
 PTAT +.50T 57R 8/16
 PPA -739M -22F -39P
 CLASS ST6 SR5 BD7 DF6 RA4 RW8 LS5 FA5
 FU6 UH7 UW6 UC9 UD5 TP7 TL2 LR8
 GOLD % FAT % PRT
 2-01 2 305 17170 4.2 720 3.1 537
 314 17560 4.2 740 3.1 549
 3-01 2 303 19560 4.0 783 3.2 617
 4-00 2 305 24750 3.9 976 2.9 715

2ND 4-YEAR-OLD - 2015 MID-ATLANTIC NAT'L
 2ND 4-YEAR-OLD - 2015 INTERNATIONAL
 RES ALL-AMERICAN 4-YEAR-OLD - 2015

FOURTH DAM: SUNNY-ACRES PROLY REGINA

EX-93
 5-04 2 365 25180 4.0 1000 2.9 733

PALMYRA TRI-STAR BURDETTE-ET

100419568
 PTA +2.88SCC +1.2PL +0.2DPR
 PTA +261M +6F +14P 99R
 PTA% -.02 +.03
 PTAT +1.80T 98R 8/16
 D/AV 19864M 3.9 778F 3.2 630P 8.5T

FOREVER SCHOON PING

9591001C
 DHI % FAT % PRT
 2-03 2 305 16407 4.5 739 3.7 604
 365 19628 4.6 902 3.7 732
 3-08 2 305 23294 4.6 1060 3.5 805
 365 26989 4.6 1239 3.5 946

PALMYRA POKER RIGGINS-ET

65459499
 PTA +3.37SCC +1.8PL +1.3DPR
 PTA +224M +23F +8P 94R
 PTA% +.08
 PTAT +.30T 89R 8/16
 D/AV 18993M 4.0 755F 3.1 593P 8.4T

SUNNY-ACRES JACKSON'S RUDEAN

100579541 85.19%
 2-08 85
 GOLD % FAT % PRT
 2-03 2 305 17750 3.5 628 3.0 535
 337 18690 3.5 657 3.0 568

THIRD DAM: SUNNY-ACRES CC RENEE

100390593 9-05 93 3E
 GOLD % FAT % PRT
 2-02 2 305 20180 3.5 715 3.0 598
 5-10 2 305 30520 4.0 1229 3.0 907
 313 31050 4.0 1247 3.0 923
 6-10 2 305 30070 3.5 1044 3.0 905
 8-10 2 305 31370 3.3 1040 2.7 845
 365 36640 3.3 1219 2.7 990
 10-08 2 305 28280 3.4 955 2.6 740
 357 31230 3.4 1048 2.6 821
 LIFE 2982 243110 3.6 8748 2.9 7095



CHALUKA NEMO XIOLI-ET, EX-93
 3-04 305D 19,681M 3.8% 739F 3.5% 683P
 ALL-CANADIAN 4-YEAR-OLD, 2015
 DAM OF LOT 6

6

\$ _____

**EMBRYO PACKAGE
 BLINK X XIOLI**

BLINK X XIOLI MATING: 94.66% AYRSHIRE

SELLING 3 #1 EMBRYOS

DE LA PLAINE BLINK

108868514C 89.32%
 GPA: (08/16) +862M/L, +40F/G, +0.09%
 +36P, +0.10% RPT.54%
 TYPE: (08/16) CONF +7 (PA): (43% RPT)
 LPI/IPV: +2756(PA) RK/RG: 97%
 SCS: 2.85(PA) INBR.C: 4.22%,
 R-VAL: 14% DTR FERT: 100(PA)

CHALUKA NEMO XIOLI-ET

106247799C EX-93 CAN
 2-03 2 305 17044 4.2 721 3.5 595
 3-04 2 305 19681 3.8 739 3.5 683

HM ALL-AMERICAN FALL CALF, 2011
 NOM ALL-CANADIAN FALL CALF, 2011
 UNAN ALL-AMERICAN FALL YEARLING, 2012
 NOM ALL-CANADIAN FALL YEARLING, 2012
 RES ALL-AMERICAN SR 2-YEAR-OLD, 2013
 ALL-CANADIAN 4-YEAR-OLD, 2015

KAMOURASKA DECAF-ET

105115743C 78.64%
 PTA +2.98SCC +1.9PL +1.0DPR
 PTA +1400M +57F +50P 80R
 PTA% +.02
 PTAT 63R 8/16

DE LA PLAINE BURDETTE BLING-ET

VG-89 CAN
 2-01 2 314 19275 4.6 895 3.6 699
 3-02 2 365 23698 4.4 1250 3.6 1043

BEAU LAC NEMO-ET

100264962C
 PTA +3.11SCC -2.0PL -1.3DPR
 PTA +3M +0F +4P 87R
 PTA% +.02
 PTAT +.90T 75R 8/16
 D/AV 22521M 3.8 862F 3.1 706P 8.7T

LAGACE BB BLANDIE-ET

101956076C VG-88 CAN
 2-06 2 305 16092 3.8 611 3.0 485
 3-06 2 305 19167 4.0 776 3.2 606
 5-06 2 305 19458 3.5 688 3.2 617
 7-03 2 284 16929 3.6 602 3.3 567
 8-03 2 256 14983 3.6 542 3.2 478

NEXT DAM:

LACHUTE ROAD BBC BLANCHE 3-ET

814011C EX-90 2E CAN
 4-00 2 305 22930 3.8 875 3.2 741
 5-04 2 305 19758 3.8 754 3.2 639
 7-06 2 305 21804 4.7 1030 3.1 677



MARILIE CALIMERO MELINA, EX-90
 3-05 305D 19,350M 4.2% 809F 3.4% 653P
 DAM OF LOT 7

7

\$ _____

**EMBRYO PACKAGE
 REALITY X MELINA**

REALITY X MELINA MATING: 92.125% AYRSHIRE

SELLING 4 #1 EMBRYOS

PALMYRA TRI-STAR REALITY

100369452						
PTA	+3.00	SCC	+1.4	PL	+0.4	DPR
PTA	+451	M	+25	F	+5	P 96R
PTA%			+0.04		-0.05	
PTAT	+0.80	T			94R	8/16
D/AV	20696	M	4.0	829F	3.1	638P 8.5T

MARILIE CALIMERO MELINA

105020214C	EX-90	CAN	84.25%
2-00 2 305	15723	4.4	690 3.7 578
3-05 2 305	19350	4.2	809 3.4 653
4-11 2 284	17595	4.5	794 3.7 646
6-00 2 305	17813	4.5	794 3.7 650

PALMYRA TRI-STAR

150440						
PTA	+2.85	SCC	-0.5	PL	-0.8	DPR
PTA	+204	M	+4	F	+6	P 96R
PTA%			-0.02			
PTAT	+0.60	T			94R	8/16
D/AV	19676	M	3.9	766F	3.1	616P 8.4T

GALNEY-EPC L.H. ROSY-ET

100110610 3-09 90						
GOLD			%	FAT	%	PRT
2-00 2 305	21110	3.7	779	2.9	621	
	365	25010	3.7	920	3.0	745
3-03 2 305	26350	3.9	1018	3.1	817	
	365	30679	3.9	1210	3.2	969
4-06 2 305	29510	3.7	1086	3.0	887	
	365	32980	3.8	1238	3.1	1014
5-08 2 305	24470	3.9	961	3.1	755	
	365	29185	3.9	1125	3.1	918
LIFE	1684	126800	3.8	4806	3.1	3970

MARGOT CALIMERO

10310847C 90.75%						
PTA	+3.05	SCC	-1.4	PL	+0.4	DPR
PTA	-379	M	+0	F	-3	P 97R
PTA%			+0.08		+0.05	
PTAT	+1.10	T			94R	8/16
D/AV	19462	M	4.0	770F	3.2	621P 8.6T

MARILIE T-B MIDRYA

100303437C VG-85 CAN 77.75%						
2-00 2 305	20622	3.8	774	3.5	732	
3-11 2 305	22375	3.8	858	3.3	739	
5-05 2 305	18556	4.0	739	3.6	672	

NEXT DAM: MARILIE BBK MIDORIE-ET

10316126C VG-86 CAN						
2-02 2 305	18303	3.7	670	3.6	653	
3-04 2 305	21197	4.0	745	3.5	745	
6-00 2 305	25084	3.6	827	3.3	827	

JULIE ET MARIO LACERTE
 YAMACHICHE, QC
 819-296-3038



VISSERDALE SELENA 3-ET, EX-90
ELITE COW
3-09 305D 30,993M 4.5% 1396F 3.4% 1069P
DAM OF LOT 8

8

\$ _____

EMBRYO PACKAGE
PERFECT X SELENA 3

PERFECT X SELENA 3 MATING: 91.3588% AYRSHIRE

SELLING 4 #1 EMBRYOS

DES FLEURS PERFECT-ET

105252735C 91.42%
 PTA +2.90SCC +1.3PL -3.6DPR
 PTA +908M +44F +17P 82R
 PTA% +.04 -.06
 PTAT +.70T 65R 8/16
 D/AV 0M 0F 7.9T

VISSERDALE SELENA 3-ET

10957143C EX-90 CAN 91.29%
 2-07 2 305 29002 4.6 1327 3.5 1016
 3-09 2 305 30993 4.5 1396 3.4 1069
 5-05 2 305 22996 4.3 999 3.4 780

FORMER #1 BCA COW IN CANADA

SONS IN AI:
 VISSERDALE SELECTION ET (REALITY)
 AT TAG ST
 VISSERDALE SPECIFIC (R FACET)
 AT TAURUS ST
 VISSERDALE SITTLER (ORRARYD) AT SEMEX

DES CHAMOIS POKER-ET

8401621C
 PTA +2.83SCC +0.9PL -1.9DPR
 PTA +28M +15F +0P 98R
 PTA% +.07
 PTAT +.40T 97R 8/16
 D/AV 19334M 4.0 767F 3.1 608P 8.5T

DES FLEURS JURIST PARFETTE

101672960C 82.85%
 DHI % FAT % PRT
 2-01 2 305 18744 3.7 697 3.4 637
 365 21583 3.9 833 3.5 752
 3-06 2 305 17476 4.4 774 3.6 635
 365 19650 4.5 875 3.7 725
 4-11 2 305 24110 3.8 922 3.4 822
 322 24643 3.9 952 3.4 849
 5-11 2 305 19992 3.9 785 3.4 670
 365 22309 4.1 904 3.5 772
 7-06 2 303 20873 4.1 847 3.6 752
 8-06 2 305 18554 4.2 778 3.6 666
 365 20496 4.2 866 3.6 745
 LIFE 2594 148840 4.1 6139 3.6 5317

KAMOURASKA ROCKSTAR

104347733C 87.22%
 PTA +2.75SCC +1.5PL -2.5DPR
 PTA +688M +46F +39P 87R
 PTA% +.10 +.08
 PTAT +.50T 78R 8/16
 D/AV 20395M 4.0 824F 3.2 649P 8.2T

VISSERDALE SELENA 2-ET

7545078C VG-86 CAN 95.37%
 2-03 2 305 20549 4.3 875 3.4 692

NEXT DAM: VISSERDALE SYBIL-ET

10026223C VG-88 CAN
 2-06 2 305 17588 3.9 683 3.3 586
 3-08 2 305 20492 4.1 838 3.4 694
 5-03 2 305 23781 3.6 847 3.2 754



DE LA PLAINE BURDETTE BLING-ET, VG-89
 3-02 305D 24,385M 4.3% 1056F 3.6% 888P
 ALL-CANADIAN 2014 & 2015
 DAM OF LOT 9



FOREVER SCHOON PING, EX-94
 5-02 365D 27,236M 4.4% 1210F 3.6% 972P
 ALL-CANADIAN 2010 & 2011
 GRANDDAM OF LOT 9

9

\$ _____

**EMBRYO PACKAGE
 BIG STAR/ADIDAS X BLING**

BIG STAR X BLING MATING: 93.41% AYRSHIRE
 ADIDAS X BLING MATING: 95.12% AYRSHIRE

SELLING 3 #1 EMBRYOS

**This was a mixed flush to Bigstar and Adidas,
 so the buyer will have to parentage test for sire
 verification.**

KAMOURASKA BIGSTAR-ET

107821541C 86.82%
 PTA +2.89SCC +1.3PL +0.5DPR
 PTA +1106M +59F +42P 44R
 PTA% +.08 +.04
 PTAT +.60T 36R 8/16

OR

RUISSEAU CLAIR ADIDAS

109166299C 90.24%
 PTA +2.95SCC +1.8PL +0.8DPR
 PTA +1077M +53F +32P 33R
 PTA% +.06
 PTAT +1.20T 27R 8/16

DE LA PLAINE BURDETTE BLING-ET

VG-89 CAN
 2-01 2 305 18781 4.6 871 3.6 679
 3-02 2 305 24385 4.3 1056 3.6 888

ALL-CANADIAN & ALL-AMERICAN JR 2-YEAR-OLD,
 2014
 ALL-CANADIAN JR 3-YEAR-OLD, 2015
 GR. CHAMP & SUPREME EXPO PRINTEMPS DU
 QUÉBEC 2016

**THIRD DAM:
 FOREVER SCHOON PRETTY**

7441960C EX-93 2E CAN
 2-05 2 313 17496 4.8 844 3.6 624
 3-05 2 342 22425 4.8 1082 3.8 849
 4-07 2 359 25064 4.4 1098 3.6 895
 6-07 2 365 26026 4.6 1206 3.4 884

GENIAL SITUATION-ET

106902365C 95%
 PTA +3.11SCC +0.1PL -0.2DPR
 PTA +439M +23F +7P 85R
 PTA% +.03 -0.04
 PTAT +1.10T 72R 8/16

KAMOURASKA JUPI UBY-ET

105759438C VG-86 CAN 78.64%
 1-11 2 355 23947 4.7 1127 3.8 917
 3-00 2 365 23563 4.2 1001 3.9 911
 4-02 2 365 24731 4.2 1052 3.9 957

KAMOURASKA BIGSTAR-ET

107821541C 86.82%
 PTA +2.89SCC +1.3PL +0.5DPR
 PTA +1106M +59F +42P 44R
 PTA% +.08 +.04
 PTAT +.60T 36R 8/16

DUO STAR ATHENA-ET

107377034C VG-88 CAN 93.66%
 2-01 2 365 24851 4.2 1041 3.1 774
 3-04 2 365 22560 5.0 1124 3.6 816

PALMYRA TRI-STAR BURDETTE-ET

100419568
 PTA +2.88SCC +1.2PL +0.2DPR
 PTA +261M +6F +14P 99R
 PTA% -.02 +.03
 PTAT +1.80T 98R 8/16
 D/AV 19864M 3.9 778F 3.2 630P 8.5T

FOREVER SCHOON PING

9591001C EX-94 CAN
 2-03 2 305 16407 4.5 739 3.7 604
 365 19628 4.6 902 3.7 732
 3-08 2 305 23294 4.6 1060 3.5 805
 365 26989 4.6 1239 3.5 946
 5-02 2 365 27236 4.4 1210 3.6 972

RES ALL-AMERICAN SR 2, 2010
 ALL-CANADIAN SR 2, 2010
 ALL-AMERICAN SR 3, 2011
 RES ALL-CANADIAN SR 3, 2011
 NOM ALL-AMERICAN 5 YR OLD, 2013

FERME DE LA PLAINE
 STE-FRANÇOISE LOTBINIÈRE, QC
 819-287-5996

