

LOT 669

SUNNY-HILLVUE AM WYONA

66738887

Born: August 4, 2009

Autumn-Ridge Matson-ET

133766626 Excellent-94 *TV *TL
PTA -125M +16F +0P 95R 1/10
PTA +1.6PL 2.89SCS -0.3DPR
PTA +1.77T +1.93UDC +2.52FLC 91R 1/10
GTPI +1653G

Sunny-Hillvue HM Winney

135799457 Good Plus-82 @ 4-00
3-08 2x 288d 16510 3.7 612 3.3 540
2-10 2x 262d 16100 4.1 668 3.4 540
1-11 2x 280d 13380 4.2 561 3.3 442

Regancrest Elton Durham-ET

2250783 Excellent-90 GM 8/01 *TR *CV *TL
PTA -273M -35F +6P 99R 1/10
PTA +2.35T +2.39UDC +2.03FLC GTPI +1550G

Autumn-Ridge Storm Mitzi-ET

122013023 Excellent-91 EEEVE 2E
4-10 2x 365d 32330 4.4 1416 3.1 1013
Life: 1434d 103700 4.7 4828 3.3 3374

Sikkema-Star-W Hi Metro-ET

17093333 Excellent-96 *CV *TL
PTA -727M -9F -5P 99R 1/10
PTA +2.56T +2.78UDC +2.05FLC GTPI +1341G

Sunny-Hillvue Mrshl Whitney

131813872 Very Good-85
5-03 2x 365d 31160 3.7 1157 3.0 949
7-05 2x 365d 31646 3.2 1033 2.9 928
6-04 2x 316d 26550 4.0 1049 3.1 834
Life: 1972d 158440 3.5 5618 3.1 4940

Sells as Lot 230

3rd Dam

Dixie-Lee Win Whitley-ET GP-83 VG-MS
4-05 2x 365d 28540 3.3 938 2.8 797
Life: 1537d 109710 3.3 3636 2.8 3098

4th Dam

Dixie-Lee Angela-ET EX-90 VEEVV 2E
3-02 2x 342d 27070 3.4 909 3.3 893

5th Thru 12th Dams

Dixie-Lee Aspen-ET EX-92 EEEEE GMD DOM
6-01 2x 365d 31520 3.8 1193 3.4 1057

Patrick-Orchard MW Abbie-ET EX-93 2E GMD
4-08 2x 365d 35920 4.1 1457 3.3 1188

Lylehaven Mark Abbie-ET VG-86 GMD DOM
3-09 2x 365d 31120 3.6 1116 2.9 898

Yarsons Apolo Havn Amber-ET VG-86 GMD DOM
3-04 2x 365d 29839 3.9 1171 3.5 1032

Suelawn Apollo Lee EX-90 GMD DOM
9-00 2x 365d 26480 4.9 1286

Life: 2741d 161390 4.6 7404

F-G-P Osborndale Dean Lul Lu EX-91 3E GMD
10-2 2x 365d 19890 4.4 892

Life: 3055d 158380 4.5 7124

FGP Osborndale Emperor Lucy EX-90 2E GMD
10-9 2x 365d 20200 4.0 807

Life: 3170d 150007 4.1 6124

Sumco Emperor Shirley VG-85

8-11 2x 365d 20041 3.9 786

Life: 2340d 112825 3.8 4314

LOT 670

DAR-LYNDA S NELLIE

66738888

Born: August 14, 2009

PTPI +1603

Pine-Tree Shilthorn-ET

63685740 *TV *TL
PTA +1745M +34F +37P 74R 1/10
PTA +4.9PL 2.68SCS -0.2DPR
PTA +1.76T +1.23UDC +1.37FLC 71R 1/10
GTPI +1981G

Big-Elm Champion Nite

136875871 Good Plus-81 @ 4-03
1-11 2x 316d 18090 4.2 756 3.1 569
2-09 2x 286d 11430 4.3 494 3.5 396
3-10 2x 208d 15646 4.2 653 3.0 471 RIP
Sells as Lot 463

Picston Shottle-ET

GBR 598172 EX-95-GBR GM 8/08 *TV *TL
PTA +1784M +86F +51P 99R 1/10
PTA +3.46T +2.64UDC +2.54FLC GTPI +2374G

Sildahl Rudolph Allstar-ET

18005790 Excellent-92 EEEVE 3E GMD DOM *TV
7-01 3x 365d 54680 3.3 1783 2.7 1471
Life: 1591d 180080 3.3 6006 2.9 5243

Calbrett-I H H Champion-ET

6961162 EX-CAN GM 2/07 *TV *TL
PTA +1055M +21F +22P 99R 1/10
PTA +1.20T +.47UDC -.12FLC GTPI +1543G

Big-Elm Ace Nellie

134238241 Good Plus-83 @ 3-08
2-04 2x 294d 14780 3.6 592 2.9 422

4th Dam

Shan-Cole Valiant Nisa-ET EX-93 EEEEE
3-06 2x 266d 20550 3.5 724 3.0 618

2-06 2x 310d 17010 4.1 705 3.3 555

• *HIM All-American Sr 3-Yr-Old Cow 1995*

• *1st Sr 3-Yr-Old Cow Eastern National 1995*

5th Dam

Durson Apollo Nellie EX-91 EEEV 4E GMD

10-11 2x 365d 27220 3.3 897

Life: 3141d 186920 3.6 6677

6th Dam

Wawaco Startrek Nan VG-87 GMD

8-08 2x 365d 23150 3.3 774

Life: 2941d 156566 3.6 5651

Oseeana Integrity Ace-ET

130031495 Excellent-90 *TV *TL
PTA -910M -59F -42P 99R 1/10
PTA +.63T +.29UDC -.07FLC GTPI +864G

Hickory-Green HR Val Nis-ET

17152785 Excellent-91 EEEVE
8-08 3x 305d 32830 5.0 1656 3.3 1079
3-11 2x 365d 28860 4.5 1306 3.2 936
7-02 3x 305d 26190 3.8 996 2.9 750
5-04 2x 365d 22520 4.8 860 3.1 698
Life: 2435d 170720 4.2 7188 3.2 5396

LOT 671

SUNNY-HILLVUE DML CARSON

66738889

Born: September 1, 2009

Den-K Marshall LL Laurin

132480026 Excellent-94 *TR *TV *TL
 PTA +750M +30F +19P 90R 1/10
 PTA -0.6PL 2.96SCS -1.3DPR
 PTA +2.29T +1.56UDC +1.70FLC 85R 1/10
 GTPI +1590G

Sunny-Hillvue MK Constance

138591656 Good Plus-82 @ 2-06
 2-02 2x 190d 10070 3.8 386 3.2 319 RIP
Sells as Lot 544

3rd Dam

Sunny-Hillvue CK Cassina GP-83

4-01 2x 330d 20340 4.8 983 3.2 661

4th Dam

Sunny-Hillvue HHR Colette EX-91 EEEEE 3E

6-08 2x 279d 24810 3.5 879 2.9 730

Life: 1650d 114050 3.6 4092 2.9 3362

Markwell Kite-ET

128460878 EX-CAN *RC *TV *TL
 PTA -1269M -27F -40P 99R 1/10
 PTA +1.97T +1.28UDC -.33FLC GTPI +853G

Sunny-Hillvue Dund Cherish

136541404 Very Good-85 @ 4-06
 3-10 2x 305d 21437 4.1 874 3.1 671 RIP
 3-00 2x 287d 18090 3.8 685 3.3 590

Sells as Lot 441

LOT 672

SUNNY-HILLVUE MAT COLETTE

66738890

Born: September 1, 2009

Autumn-Ridge Matson-ET

133766626 Excellent-94 *TV *TL
 PTA -125M +16F +0P 95R 1/10
 PTA +1.6PL 2.89SCS -0.3DPR
 PTA +1.77T +1.93UDC +2.52FLC 91R 1/10
 GTPI +1653G

Sunny-Hillvue Eisen Colette

138591674 Good Plus-80 @ 2-06
 2-02 2x 190d 9414 4.6 432 3.2 305 RIP
Sells as Lot 547

3rd Dam

Sunny-Hillvue BS Colette-ET EX-95 2E DOM

7-00 2x 365d 38240 3.7 1432 3.1 1168

Life: 2669d 223044 3.7 8296 3.1 6887

4th Dam

Knox-Hill Sexation Colette EX-93 2E DOM

6-00 2x 347d 30330 4.0 1204 3.0 980

Life: 1452d 104450 3.9 4035 3.0 1870

Bidjon-JK Eisenhower-ET

1343328110 Excellent-91 *TV *TL
 PTA -225M +3F +1P 96R 1/10
 PTA +1.16T +.41UDC +.82FLC GTPI +1293G

Sunny-Hillvue Lee Claire-ET

134865739 Very Good-87 VEVVV
 4-09 2x 365d 26380 3.0 803 3.0 786
 3-09 2x 296d 25520 3.2 815 3.0 769
 2-00 2x 365d 22780 3.5 807 3.1 701

Sells as Lot 345

LOT 674

SUNNY-HILLVUE AST PRICILLA

66738892

Born: September 2, 2009

Kingsmill Gdwyn Asteroid-ET

63016175 Very Good-85 *TV *TL
 PTA -365M +28F -5P 74R 1/10
 PTA -1.0PL 2.92SCS -1.6DPR
 PTA +2.51T +1.56UDC +1.94FLC 71R 1/10
 GTPI +1469G

Sunny-Hillvue Rbn Prissella

137656417 Very Good-87 VG-MS @ 3-06
 2-02 2x 288d 19150 2.8 544 3.2 619
 3-02 2x 189d 13971 3.4 479 3.1 432 RIP
Sells as Lot 494

3rd Dam

Maview Promise Performer EX-90 EVEVE 2E

3-05 2x 341d 29410 3.5 1035 3.0 868

Life: 1403d 112570 3.2 3633 2.9 3242

4th Dam

Maview Promise Simon EX-91 EEEVV 3E

7-05 3x 365d 29760 3.2 950 2.5 749

Life: 2633d 198420 3.2 6367 2.6 5122

STBVQ Rubens-ET

5844883C VG-CAN GM 8/04 *RC *TV *TL
 PTA -568M -19F -1P 99R 1/10
 PTA +1.20T +2.08UDC +.15FLC GTPI +1378G

Lucky-Buttke Wade Prissie

131161966 Good-78 @ 3-09
 6-05 2x 318d 22550 3.9 882 3.2 722
 5-03 2x 351d 21720 3.7 799 3.1 676
 Life: 1559d 103010 3.7 3794 3.1 3214

LOT 675

SUNNY-HILLVUE PTS COLLEEN

66738893
Born: September 2, 2009
P9 PTPI +1696

Pine-Tree Shilthorn-ET

63685740 *TV *TL
PTA +1745M +34F +37P 74R 1/10
PTA +4.9PL 2.68SCS -0.2DPR
PTA +1.76T +1.23UDC +1.37FLC 71R 1/10
GTPI +1981G

Sunny-Hillvue Beav Chance

134830331 Good Plus-83
3-08 2x 322d 21350 4.7 1001 3.2 686
2-07 2x 354d 19730 4.8 949 3.2 640
4-09 2x 251d 18130 4.4 800 3.2 580
5-09 2x 189d 16401 4.3 705 3.0 492 RIP
Sells as Lot 366

3rd Dam

Sunny-Hillvue BS Colette-ET EX-95 2E DOM
7-00 2x 365d 38240 3.7 1432 3.1 1168
Life: 2669d 223044 3.7 8296 3.1 6887

4th Dam

Knox-Hill Sexation Colette EX-93 2E DOM
6-00 2x 347d 30330 4.0 1204 3.0 980
Life: 1452d 104450 3.9 4035 3.0 1870

Coyne-Farms Patron Beaver

122328536 Excellent-91 *TV *TL
PTA +47M +29F +10P 99R 1/10
PTA -.84T -.39UDC -1.60FLC GTPI +1217G

Sunny-Hillvue TL Chelsy-ET

17155549 Very Good-86 VG-MS
5-01 2x 321d 20660 3.8 785 3.2 654
7-05 2x 296d 19740 4.1 814 3.0 597
Life: 1937d 113860 4.1 4724 3.2 3605

LOT 676

SUNNY-HILLVUE AFF KIARA

66738894
Born: September 2, 2009

BKB Affirmed-ET

132277541 *TV *TL
PTA -1073M -32F -26P 98R 1/10
PTA -1.1PL 2.72SCS -2.5DPR
PTA +1.94T +1.49UDC +2.02FLC 95R 1/10
GTPI +1181G

Sunny-Hillvue Pro Kaleigh

138768883 Good-78 @ 2-04
2-00 2x 189d 10654 4.0 426 2.9 309 RIP
Sells as Lot 561

Comestar Lee-ET

5757117C EX-CAN GM 8/03 *TV *TL
PTA -516M +20F -7P 99R 1/10
PTA +1.04T +.64UDC +1.01FLC GTPI +1378G

Shoremar S Alicia-ET

6434408C Excellent-97 EEEEE 3E *BL
6-10 2x 365d 35760 4.3 1544 3.4 1215
• *HHM All-Time All-American 5-Yr-Old Cow*

Windy-Knoll-View Rubens Pro

131213869 *TV *TL
PTA -1014M -49F -29P 98R 1/10
PTA +1.93T +2.29UDC +.85FLC GTPI +1317G

Sunny-Hillvue Zen Kayla

133516397 Very Good-87 VG-MS @ 3-04
4-00 2x 307d 24440 3.9 954 3.0 738
2-11 2x 333d 23690 3.7 867 3.0 720
2-00 2x 206d 21650 3.6 775 3.1 661

LOT 678

SUNNY-HILLVUE AST CYDNEY

66738896
Born: September 3, 2009

Kingsmill Gdwyn Asteroid-ET

63016175 Very Good-85 *TV *TL
PTA -365M +28F -5P 74R 1/10
PTA -1.0PL 2.92SCS -1.6DPR
PTA +2.51T +1.56UDC +1.94FLC 71R 1/10
GTPI +1469G

Sunny-Hillvue Exsp Chicky

135298871 Good Plus-80
3-01 2x 365d 27630 4.3 1184 3.1 843
4-04 2x 303d 22550 3.8 847 3.0 673
2-01 2x 286d 19040 3.9 741 2.9 546
5-05 2x 188d 15090 4.0 611 2.9 442 RIP
Sells as Lot 384

3rd Dam

Sunny-Hillvue Durh Charlete VG-85
3-00 2x 305d 24530 3.5 849 3.0 727

Ocean-View Extra Special-ET

131410819 Very Good-87 *TV *TL
PTA -1570M -36F -41P 99R 1/10
PTA +.14T +.40UDC +.77FLC TPI +1461

Sunny-Hillvue RM Charly

132193319 Good Plus-82 @ 2-11
5-01 2x 365d 24800 3.7 908 2.8 692
4-01 2x 300d 22300 3.7 820 2.8 614
2-03 2x 305d 20330 3.8 772 2.8 569

LOT 679

SUNNY-HILLVUE JESABELL

66738897

Born: September 3, 2009

Sunny-Hillvue Gwn Magnum-ET

138768922

PTA -80M +21F +4P 40R 1/10

PTA +4.1PL 2.72SCS -0.9DPR

PTA +2.66T +2.11UDC +1.90FLC 39R 1/10

PTPI +1805

Sunny-Hillvue Special Jewel

136250234 Good Plus-80

2-01 2x 303d 15200 4.9 750 3.3 504

3-11 2x 242d 14490 4.6 668 3.6 515

3-00 2x 268d 13680 4.7 638 3.5 478

4-09 2x 188d 12484 4.7 590 3.3 408 RIP

Sells as Lot 413

Braedale Goldwyn

10705608 GP-CAN EXTRA'05 GM 1/10 *TV *TL

PTA +717M +67F +35P 99R 1/10

PTA +3.25T +2.84UDC +2.38FLC GTPI +2181G

Holidays Linjet Molly-ET

130625946 Excellent-94 EEEEE 2E

7-05 2x 365d 34470 3.8 1293 3.0 1025

Life: 1713d 128510 3.9 5010 3.3 4186

Ocean-View Extra Special-ET

131410819 Very Good-87 *TV *TL

PTA -1570M -36F -41P 99R 1/10

PTA +.14T +.40UDC +.77FLC TPI +1461

Rilara Stnhm Chloe Julienne

51404934 Good Plus-84

5-00 2x 365d 25640 4.2 1067 3.3 842

3-09 2x 351d 24250 3.9 942 3.2 777

2-02 2x 365d 20480 3.6 745 3.4 689

4th Dam

WBF Rambo Julietta-ET EX-91 EEEEE 5E

8-00 2x 365d 27840 3.9 1089 3.0 829

Life: 3583d 229430 3.7 8389 3.1 7016

5th Dam

Keef Elevation Judy EX-92 4E DOM

10-7 2x 365d 26210 3.2 841

Life: 3071d 188030 3.7 6911

6th Dam

Keef Wayne Jewel EX-90 VEEE 2E GMD

5-02 2x 320d 21580 3.8 825

Life: 1932d 113210 3.7 4162

Richesse Stoneham-ET

6264421C EX-CAN ST'99 *B/R *TV *TL

PTA -798M +4F +7P 99R 1/10

PTA +.41T +.15UDC +.37FLC GTPI +1380G

Rilara SD Julietta Chloe-ET

17166922 Excellent-90 EX-MS 3E

7-07 2x 365d 26730 3.8 1006 2.8 740

8-11 2x 365d 23860 3.9 919 2.8 661

Life: 2887d 187600 3.7 6910 2.9 5491

LOT 682

SUNNY-HILLVUE RB FARAH-RED

66738900

Born: September 6, 2009

KHW Redbull

138108935 *RC *TV *TL

PTA -275M +3F +3P 72R 1/10

PTA +2.7PL 2.98SCS -0.8DPR

PTA +1.65T +2.26UDC +1.89FLC 68R 1/10

GTPI +1632G

Sunny-Hillvue A Firefly-Red

138207568 Good Plus-80 @ 2-08

1-11 2x 331d 19890 2.7 583 2.9 570

2-11 2x 185d 6725 3.3 224 2.9 194 RIP

Sells as Lot 511

Granduc Tribute-ET

6873798 VG-85-CAN EXTRA'02 *RC *TV *TL

PTA +80M -11F +4P 99R 1/10

PTA +1.35T +1.24UDC +.23FLC GTPI +1283G

KHW Apple-Red-ET

135511521 Excellent-94 EEEEE *CV

4-01 2x 365d 35750 4.7 1682 3.5 1247

• All-American Jr 2-Yr-Old Cow 2006

KHW Kite Advent-Red-ET

133002953 Excellent-94 *TV *TL *TD

PTA -1189M -19F -27P 99R 1/10

PTA +2.40T +2.29UDC +1.56FLC GTPI +1463G

Sunny-Hillvue Rbns Fire-Red

133974889 Good Plus-83

4--8 2x 322d 24210 3.4 817 3.0 734

5-09 2x 305d 23420 3.1 735 3.0 695

2-01 2x 365d 20390 3.2 651 3.3 679

3-07 2x 313d 18710 3.8 703 3.2 599

4th Dam

Sunny-Hillvue Firfly-Red-TW VG-87 VEVVV

9-00 2x 340d 24540 3.8 926 29 708

Life: 2240d 145999 3.8 5484 2.9 4266

5th Dam

S-Queens-Manor Regina-Red-ET VG-87 EX-MS

5-01 2x 338d 18180 4.0 725 3.2 577

6th Dam

Maple-Leaf-M Prestar Reba-Red VG-86

4-04 2x 305d 28500 3.6 1038 3.3 936

7th Dam

Maple-Leaf-M St Pine Rhyme VG-88 VVVE

6-02 2x 305d 27240 4.4 1194 3.2 876

STBVQ Rubens-ET

5844883C VG-CAN GM 8/04 *RC *TV *TL

PTA -568M -19F -1P 99R 1/10

PTA +1.20T +2.08UDC +.15FLC GTPI +1378G

Sunny-Hillvue Burke Firefly

129666848 Good-79 @ 2-10 *RC

2-01 2x 309d 21090 3.5 742 3.2 681

3-00 2x 286d 21160 2.9 616 3.1 649



DIXIE-LEE ANGELA-ET EX-90 2E
3RD DAM OF LOT 685

LOT 685

SUNNY-HILLVUE MAGNUM WREN

66738903
Born: September 12, 2009
PTPI +1633 +2.6PL 2.80SCS +0.2DPR 1/10

Braedale Goldwyn

10705608 GP-CAN EXTRA'05 GM 1/10 *TV *TL
PTA +717M +67F +35P 99R 1/10
PTA +3.25T +2.84UDC +2.38FLC GTPI +2181G

Hollidays Linjet Molly-ET

130625946 Excellent-94 EEEEE 2E
7-05 2x 365d 34470 3.8 1293 3.0 1025
Life: 1713d 128510 3.9 5010 3.3 4186

Nunesdale Durham Rudy-ET

60073805 GM 8/08 *TV *TL
PTA -525M -18F +7P 99R 1/10
PTA +1.38T +1.89UDC +.68FLC GTPI +1724G

Dixie-Lee Win Whitley-ET

128343225 Good Plus-83 VG-MS @ 2-09
4-05 2x 365d 28540 3.3 938 2.8 797
2-01 2x 365d 28060 3.4 952 2.9 825
5-07 2x 333d 25500 3.0 758 2.7 698
7-00 2x 336d 22640 3.6 817 2.7 619
Life: 1537d 109710 3.3 3636 2.8 3098

Sunny-Hillvue Gwn Magnum-ET

138768922
PTA -80M +21F +4P 40R 1/10
PTA +4.1PL 2.72SCS -0.9DPR
PTA +2.66T +2.11UDC +1.90FLC 39R 1/10
PTPI +1805

Sunny-Hillvue Rudy Willow

137656426 Good Plus-81
2-03 2x 248d 12730 4.0 513 3.4 431
3-02 2x 179d 12124 4.0 480 3.4 410 RIP
Sells as Lot 495

3rd Dam

Dixie-Lee Angela-ET EX-90 VEEVV 2E
3-02 2x 342d 27070 3.4 909 3.3 893

4th Dam

Dixie-Lee Aspen-ET EX-92 EEEEE GMD DOM
6-01 2x 365d 31520 3.8 1193 3.4 1057

5th Dam

Patrick-Orchard MW Abbie-ET EX-93 2E GMD
4-08 2x 365d 35920 4.1 1457 3.3 1188

6th Dam

Lylehaven Mark Abbie-ET VG-86 GMD DOM
3-09 2x 365d 31120 3.6 1116 2.9 898

7th Dam

Yarsons Apolo Havn Amber-ET VG-86 GMD DOM
3-04 2x 365d 29839 3.9 1171 3.5 1032

8th thru 11th Dams

Suelawn Apollo Lee EX-90 GMD DOM
9-00 2x 365d 26480 4.9 1286

Life: 2741d 161390 4.6 7404

F-G-P Osborndale Dean Lul Lu EX-91 3E GMD
10-2 2x 365d 19890 4.4 892

Life: 3055d 158380 4.5 7124

FGP Osborndale Emperor Lucy EX-90 2E GMD
10-9 2x 365d 20200 4.0 807

Life: 3170d 150007 4.1 6124

Sumco Emperor Shirley VG-85

8-11 2x 365d 20041 3.9 786

Life: 2340d 112825 3.8 4314

LOT 686

SUNNY-HILLVUE SAN TERI

66738904

Born: September 21, 2009

Gen-Mark Stmatic Sanchez

134422312 Excellent-94 *TR *TV *TL

PTA +819M +7F +20P 92R 1/10

PTA +0.54PL 2.93SCS -1.3DPR

PTA +3.13T +2.48UDC +2.39FLC 88R 1/10

GTPI +1720G

Sunny-Hillvue Stomtc Tonya

134259862 Very Good-85

3-07 2x 365d 27840 3.3 924 2.9 805

1-11 2x 365d 24690 3.4 832 2.9 715

5-02 2x 310d 21790 3.4 743 2.9 624

6-02 2x 167d 13587 3.7 505 2.8 383 RIP

Sells as lot 331

Comestar Stormatic-ET

6947936C EX-CAN GM 2/07 *TV *TL

PTA +487M +2F +5P 99R 1/10

PTA +1.68T +1.06UDC +2.17FLC GTPI +1520G

Gen-Mark BW Mar Winnie-ET

131652910 Excellent-90 EEEVV 2E

4-08 2x 365d 43690 3.6 1555 2.7 1172

Life: 1463d 132550 3.6 4737 2.9 3823

Comestar Stormatic-ET

6947936C EX-CAN GM 2/07 *TV *TL

PTA +487M +2F +5P 99R 1/10

PTA +1.68T +1.06UDC +2.17FLC GTPI +1520G

Sunny-Hillvue Durham Tia-ET

131226962 Good-79 @ 4-07

4-06 2x 365d 27310 3.3 901 3.1 857

6-02 2x 365d 26120 3.4 896 3.0 796

3-04 2x 365d 24440 3.3 801 3.1 762

2-02 2x 365d 23220 2.6 599 3.3 757

Life: 1847d 117650 3.2 3720 3.2 3795

4th Dam

C Alanvale Inspiration Tina EX-95 2E GMD DOM

6-00 2x 365d 36010 5.1 1829 3.3 1184

Life: 1503d 136010 4.5 6122 3.3 4555

• Res All-American Aged Cow 1995-1996

• Res Sr & Res Gr Ch International Show 1995

• All-Canadian Jr 3-Yr-Old Cow 1993

• Supreme Champion Eastern National 1993

• HM All-American Jr 2-Yr-Old Cow 1991

5th Dam

Alanvale Puget Anetia VG-85-CAN

12-0 2x 365d 23812 4.1 970 3.5 827

Life: 11 Lact 203901 4.2 8503 3.5 5600

Regancrest Elton Durham-ET

2250783 Excellent-90 GM 8/01 *TR *CV *TL

PTA -273M -35F +6P 99R 1/10

PTA +2.35T +2.39UDC +2.03FLC GTPI +1550G

Ernest-Anthony Astr Tart-ET

15671857 Excellent-92 EVEEE

3-04 2x 365d 25140 4.3 1103 3.3 844

6-03 2x 365d 24930 4.7 1162 3.3 828

2-03 2x 349d 23110 4.7 1094 3.3 763

4-08 2x 365d 22390 4.8 1071 3.2 719

Life: 1637d 104550 4.6 4849 3.3 3469

LOT 687

SUNNY-HILLVUE LLPORSCH

66738905

Born: September 28, 2009

Lylehaven Lightning

134229692 Excellent-91 *TV *TL

PTA -137M +33F +9P 90R 1/10

PTA -0.3PL 2.75SCS +0.4DPR

PTA +1.79T +1.82UDC +.89FLC 83R 1/10

GTPI +1753M

Sunny-Hillvue Kite Penelope

138590600 Very Good-85 VG-MS @ 2-06

2-03 2x 163d 11141 3.6 398 3.1 345 RIP

Sells as Lot 540

Regancrest Elton Durham-ET

2250783 Excellent-90 GM 8/01 *TR *CV *TL

PTA -273M -35F +6P 99R 1/10

PTA +2.35T +2.39UDC +2.03FLC GTPI +1550G

Lylehaven Form Laura-ET

126786486 Excellent-94 EEEEE 3E

8-08 2x 365d 39320 3.9 1529 3.1 1218

• Grand Champion North-E Fall/Nat 2003

Markwell Kite-ET

128460878 EX-CAN *RC *TV *TL

PTA -1269M -27F -40P 99R 1/10

PTA +1.97T +1.28UDC -.33FLC GTPI +853G

Sunny-Hillvue Roy Peabody

136385060

3rd Dam

Sunny-Hillvue Durham Peatie VG-87 VG-MS *RC

3-00 2x 315d 19000 4.2 801 3.3 620

4th Dam

Sunny-Hillvue Storm Peanut GP-83

2-03 2x 325d 22400 4.4 979 3.0 669

5th Dam

Leawood Patrice VG-85

4-10 2x 364d 23650 4.3 1015 2.9 692

6th Dam

Leawood Panache VG-87 VEVV

3-06 2x 292d 18130 3.8 694 3.0 543

7th Dam

Leawood Justa Pleasure EX-90 VEVE

3-07 2x 365d 25900 4.5 1176 3.3 850

8th thru 11th Dams

Leawood Jocelyn EX-90 EEEV

3-06 2x 365d 20790 5.5 1140 3.6 755

Life: 1824d 101430 5.0 5044 3.6 3635

Leawood Judie EX-90 EEEV

4-10 2x 365d 27990 4.4 1234 3.1 855

Leawood RORAE Judy EX-90 2E DOM

7-10 2x 365d 27701 4.3 1193 3.3 917

Life: & lact 154922 3.9 6098 3.4 4817

Hyckory-Hill Tornado Judy EX-92 2E

7-10 2x 365d 25210 4.4 1116

Life: 6 Lact 113239 4.3 4925

LOT 688

SUNNY-HILLVUE LAURIN ANGEL

66738906

Born: October 5, 2009

Den-K Marshall LL Laurin

132480026 Excellent-94 *TR *TV *TL
PTA +750M +30F +19P 90R 1/10
PTA -0.6PL 2.96SCS -1.3DPR
PTA +2.29T +1.56UDC +1.70FLC 85R 1/10
GTPI +1590G

Sunny-Hillview Mod Angelica

132710323 Good Plus-83
6-07 2x 362d 23770 3.1 743 2.8 669
5-01 2x 323d 22810 3.4 781 2.7 622
4-01 2x 324d 20930 3.5 737 2.8 578
3-01 2x 298d 20330 2.6 537 2.8 574
2-02 2x 289d 16000 3.6 577 2.9 471
Life: 1596d 103840 3.3 3375 2.8 2914
Sells as Lot 250

Mara-Thon BW Marshall-ET

2290977 Very Good-86 GM 1/08 *TV *TL
PTA +1225M +21F +25P 99R 1/10
PTA +1.65T +1.60UDC +2.15FLC GTPI +1523G

Ms Sunnyhome Lil-Lee

128573064 Excellent-90
3-10 2x 351d 44310 3.2 1431 3.3 1477
Life: 1662d 124691 3.1 3878 3.3 4125

Jol-Lee Mtoto Modem-ET

128742024 *TV *TL
PTA -239M 04F -11P 89R 1/10
PTA -.81T -.83UDC -1.63FLC TPI +1100

Sunny Hillvue Rod Angel

128816793 Good-77 @ 2-06
2-01 2x 274d 17980 3.1 566 3.0 531

3rd Dam

Sunny-Hillvue RC Anniversary

4th Dam

Sunny-Hillvue Pre Andrea-ET

5th Dam

C Ventura Warden Andrea EX-93 EVEE 2E

8-10 2x 346d 19710 3.6 714 3.0 588

6th Dam

Pickolea Downy Amy VG-85 VG-MS-CAN

7-06 2x 323d 22736 3.8 858

Life: 6 Lact 105858 3.6 3814

7th Dam

Pickolea Reflection Amy GP-83-CAN *1 STAR

4-09 2x 332d 19120 3.8 725

8th Dam

Pickolea Sovereign Amy VG-CAN

8-05 2x 330d 18247 3.4 628

Life: 13 Lact 195374 3.4 6689

9th Dam

Pickolea Amy R VG-CAN

4-01 2x 335d 14330 4.2 595

LOT 691

SUNNY-HILLVUE AST DONA

66738909

Born: October 14, 2009

Kingsmill Gdwyn Asteroid-ET

63016175 Very Good-85 *TV *TL
PTA -365M +28F -5P 74R 1/10
PTA -1.0PL 2.92SCS -1.6DPR
PTA +2.51T +1.56UDC +1.94FLC 71R 1/10
GTPI +1469G

Sunny-Hillvue Erd Dana

138768865 Good Plus-81 @ 2-04
2-02 2x 147d 8504 4.3 362 3.2 275 RIP
Sells as Lot 558

Braedale Goldwyn

10705608 GP-CAN EXTRA'05 GM 1/10 *TV *TL
PTA +717M +67F +35P 99R 1/10
PTA +3.25T +2.84UDC +2.38FLC GTPI +2181G

Tri-Day Ashlyn-ET

17181481 EX-96 EEEEE 2E GMD DOM
4-09 2x 365d 43090 4.8 2079 3.5 1503

• All-Time All-American 4-Yr-Old Cow

Erbacres Damion

130263722 Excellent-94 *TV *TL
PTA -379M -53F +5P 99R 1/10
PTA +3.08T +2.28UDC +2.86FLC GTPI +1539G

Richdale SN Duchess

137266931 Good Plus-82 @ 4-05
2-00 2x 341d 20540 4.3 888 3.1 640
3-11 2x 260d 16536 4.3 715 2.9 480 RIP

Sells as Lot 450

3rd Dam

Farquhar Rudolph Dutches-ET VG-88 EX-MS

3-08 2x 286d 21080 3.9 830 3.2 680

4th Dam

Farquhar Starbuck Deigh-ETVG-87-CAN *1 STAR

11-10 2x 365d 26345 3.7 983 3.2 852

Life: 3542d 219731 3.6 8449 3.2 7081

5th Dam

Meadow Bridge N J S Dusty EX-CAN *2 STAR

5-05 2x 365d 25606 3.7 937

Life: 6 Lact 130248 3.7 4775

6th Dam

Meadow Bridge R M Della EX-CAN *4 STAR

10-8 2x 365d 27569 4.1 1118

Life: 10 Lact 202878 4.0 8131

7th Dam

Meadow Bridge Empress Dora VG-86 *5 STAR

5-10 2x 329d 22956 3.7 853

Life: 7 Lact 142627 3.6 5205

8th Dam

Meadow Bridge Shamrock Dora VG-CAN *3 STAR

7-06 2x 335d 20591 4.0 818

9th Dam

Meadow Bridge Re-Echo Debbie VG-CAN *3 STAR

4-09 2x 305d 18283 3.5 646

10th Dam

Star Pietje Elmogram VG-CAN *2 STAR

LOT 693**SUNNY-HILLVUE SPIRTE MARCY**

68964155

Born: November 6, 2009

Cedarwal Spirte

10559198C EX-93-CAN ST'03 *TV *TL
 PTA +196M +18F -1P 97R 1/10
 PTA +2.6PL 2.92SCS -2.0DPR
 PTA +2.10T +2.17UDC +.70FLC 95R 1/10
 GTPI +1587G

Beatyview Macy Sky Fame

61481197 Very Good-88 VEVVV
 2-03 2x 364d 27160 4.2 1146 2.7 742
 3-04 2x 365d 25330 3.6 916 2.8 720
 4-07 2x 312d 25260 2.9 743 2.7 678
 5-07 2x 124d 11091 3.6 403 2.7 303 RIP
Sells as Lot 61

Comestar Lee-ET

5757117C EX-CAN GM 8/03 *TV *TL
 PTA -516M +20F -7P 99R 1/10
 PTA +1.04T +.64UDC +1.01FLC GTPI +1378G

Cedarwal Halo Mason-ET

6647005C VG-85-CAN *1 STAR
 2-02 2x 365d 31208 3.1 977 3.3 1023
 Life: 4 Lact 121182 3.3 3990 3.1 3724

Quality Sky Fame-ET

10573621C EX-CAN *TV *TL
 PTA -168M -2F -21P 99R 1/10
 PTA +.44T +.07UDC -2.20FLC TPI +1100M

Nivloc Dirk Ann

130209744 Excellent-90 EEEVE 2E
 4-09 2x 365d 35840 4.6 1646 2.6 930
 3-05 3x 365d 31370 4.3 1338 2.8 891
 6-03 2x 365d 26620 4.4 1160 3.0 788
 Life: 1661d 128870 4.2 5438 2.8 3623

LOT 694**SUNNY-HILLVUE LAVOR REN**

68964156

Born: November 21, 2009

Savage-Leigh Lavor

61604420 *RC *TV *TL
 PTA -910M -6F -8P 72R 1/10
 PTA +2.8PL 2.89SCS +0.6DPR
 PTA +2.20T +2.21UDC +1.32FLC 68R 1/10
 GTPI +1615G

Sunny-Hillvue Aces Ride

138768847
 2-03 2x 109d 8061 4.3 349 2.9 237 RIP
Sells as Lot 556

3rd Dam

Sunny-Hillvue Ruby VG-85 VG-MS
 4-00 2x 365d 30320 3.6 1080 2.8 841

4th Dam

Sunny-Hillvue BC Rhoda-TW VG-85 VG-MS
 3-11 2x 365d 27760 3,3 905 2.9 796

*Next Dam Excellent!***EO Siemers Ace-ET**

60811121
 PTA +123M -18F -7P 97R 1/10
 PTA +1.13T +.26UDC +1.54FLC GTPI +1395G

Sunny-Hillvue Cost Rhonda

131195895 Very Good-85 VG-MS @ 3-10
 6-06 2x 348d 27830 4.1 1130 2.9 798
 3-08 2x 365d 27170 3.4 926 2.9 790
 5-00 2x 365d 27180 3.2 876 2.8 759
 7-07 2x 365d 27520 3.1 754 2.9 713
 Life: 2145d 139510 3.5 4886 2.9 4073

LOT 695**SUNNY-HILLVUE SPIRTE TWINKY**

68964157

Born: December 1, 2009

Cedarwal Spirte

10559198C EX-93-CAN ST'03 *TV *TL
 PTA +196M +18F -1P 97R 1/10
 PTA +2.6PL 2.92SCS -2.0DPR
 PTA +2.10T +2.17UDC +.70FLC 95R 1/10
 GTPI +1587G

Sunny-Hillvue Twinkletoes

137266986 Good Plus-81 VG-MS @ 2-03
 1-10 2x 280d 18310 4.0 729 3.0 546
 2-09 2x 327d 17020 3.9 665 3.3 562
 3-11 2x 99d 10279 4.2 429 2.8 292 RIP
Sells as Lot 476

3rd Dam

Sunny-Hillvue Trinket-ET VG-87 VG-MS
 3-07 2x 321d 19900 4.5 890 3.7 728

4th Dam

Ernest-Anthony Astr Tart-ET EX-92 EVEEE
 3-04 2x 365d 25140 4.3 1103 3.3 844
 Life: 1637d 104550 4.6 4849 3.3 3469

Regancrest Dundee-ET

127640114 Excellent-95 *TV *TL
 PTA -419M -24F -8P 99R 1/10
 PTA +2.13T +2.28UDC +.93FLC GTPI +1325G

Sunny-Hillvue Lee Twinkle

133516548 Very Good-88 EX-MS @ 3-09
 4-04 2x 365d 28530 4.3 1236 3.2 922
 3-03 2x 351d 24560 4.0 990 3.2 794
 2-03 2x 303d 20840 3.8 797 3.3 691

LOT 698

SUNNY-HILLVUE LAUREN SLENA

68964160

Born: December 2, 2009

Den-K Marshall LL Laurin

132480026 Excellent-94 *TR *TV *TL
PTA +750M +30F +19P 90R 1/10
PTA -0.6PL 2.96SCS -1.3DPR
PTA +2.29T +1.56UDC +1.70FLC 85R 1/10
GTPI +1590G

Sunny-Hillvue Aces Serenity

138768995
2-01 2x 98d 6727 3.9 262 2.6 176 RIP
Sells as Lot 571

3rd Dam

Walkup Integrity Savanna GP-84
4-06 2x 291d 21480 4.1 887 3.0 646

4th Dam

Walkup Prelude Sally-ET VG-86
3-01 2x 353d 28510 3.8 1073 3.2 905

5th Dam

Walkup Valiant Shellie-ET EX-91 2E GMD DOM
8-04 2x 365d 30840 3.9 1191 3.1 971

EO Siemers Ace-ET

60811121
PTA +123M -18F -7P 97R 1/10
PTA +1.13T +.26UDC +1.54FLC GTPI +1395G

Sunny-Hillvue Outs Savenger

132918534 Good-78 @ 2-07
3-03 2x 365d 28280 3.0 855 2.9 825
2-04 2x 287d 20300 3.3 678 2.9 586

LOT 700

SUNNY-HILLVUE SAN KENDRA

68964162

Born: December 8, 2009

Gen-Mark Stmatic Sanchez

134422312 Excellent-94 *TR *TV *TL
PTA +819M +7F +20P 92R 1/10
PTA +0.54PL 2.93SCS -1.3DPR
PTA +3.13T +2.48UDC +2.39FLC 88R 1/10
GTPI +1720G

Sunny-Hillvue Pro Keylee

138769017
2-00 2x 92d 5651 2.9 166 2.9 165 RIP
Sells as Lot 574

3rd Dam

Sunny-Hillvue Zen Kelsey GP-80
4-07 2x 365d 27870 4.0 1128 3.4 939
Life: 1692d 116380 3.8 4443 3.2 3742
Dam of Lot 531

Windy-Knoll-View Rubens Pro

131213869 *TV *TL
PTA -1014M -49F -29P 98R 1/10
PTA +1.93T +2.29UDC +.85FLC GTPI +1317G

Sunny-Hillvue Dunde Keylime

136541507
3-05 2x 316d 17970 2.9 526 3.1 563
2-05 2x 296d 17120 3.4 583 3.0 522

LOT 702

SUNNY-HILLVUE LAVOR DINA

68964164

Born: December 12, 2009

Savage-Leigh Lavor

61604420 *RC *TV *TL
PTA -910M -6F -8P 72R 1/10
PTA +2.8PL 2.89SCS +0.6DPR
PTA +2.20T +2.21UDC +1.32FLC 68R 1/10
GTPI +1615G

Sunny-Hillvue Storm Dillia

138207700 Good Plus-83 @ 3-01
2-01 2x 282d 14140 4.2 593 3.3 560
3-01 2x 88d 5137 5.4 278 3.4 176 RIP
Sells as Lot 521

3rd Dam

Sunny-Hillvue Ice Dot GP-83
1-11 2x 365d 20760 4.6 946 3.3 684

Regan-Olmar Dur Storm-ET

61077248 *TV *TL
PTA -936M -24F -15P 94R 1/10
PTA +1.99T +2.44UDC +.28FLC GTPI +1373G

Sunny-Hillvue Lotto Daido

134830180 Good-77 @ 2-08
3-00 2x 365d 22240 4.8 1066 3.3 744
2-01 2x 288d 17470 4.7 829 3.2 564

LOT 704

SUNNY-HILLVUE SAN CANDACE

68964166

Born: December 25, 2009

Gen-Mark Stmatic Sanchez

134422312 Excellent-94 *TR *TV *TL

PTA +819M +7F +20P 92R 1/10

PTA +0.54PL 2.93SCS -1.3DPR

PTA +3.13T +2.48UDC +2.39FLC 88R 1/10

GTPI +1720G

Sunny-Hillvue Drake Cami

138768968

2-03 2x 75d 5635 3.7 209 3.2 178 RIP

Sells as Lot 568

3rd Dam

Sunny-Hillvue M& M Colette GP-83

2-03 2x 317d 23410 3.5 831 2.9 685

4th Dam

Sunny-Hillvue SD Colette VG-85

4-08 2x 365d 28030 3.6 1001 2.8 773

Far-O-La Debbie-Jo Drake-ET

130498623 *TV *TL

PTA -730M -26F -16P 99R 1/10

PTA +2.17T +2.67UDC +1.61FLC GTPI +1502G

Sunny-Hillvue Hi Colette

136541561 Very Good-87 @ 4-05

3-03 2x 334d 23180 3.5 800 3.0 687

2-02 2x 328d 22100 3.7 816 3.0 655

4-03 2x 154d 14130 3.7 524 2.9 414 RIP

Sells as Lot 451

LOT 705

SUNNY-HILLVUE AST TINA

68964167

Born: December 25, 2009

Kingsmill Gdwyn Asteroid-ET

63016175 Very Good-85 *TV *TL

PTA -365M +28F -5P 74R 1/10

PTA -1.0PL 2.92SCS -1.6DPR

PTA +2.51T +1.56UDC +1.94FLC 71R 1/10

GTPI +1469G

Sunny-Hillvue Storm Twink

138207737 Good Plus-83 @ 3-00

1-09 2x 365d 20880 3.3 693 3.0 626

Selling as Lot 524

3rd Dam

Sunny-Hillvue Silver Twinky EX-90 EEEVV

6-01 2x 365d 35070 3.7 1313 2.9 1028

Life: 1820d 145330 3.7 5373 3.0 4426

4th Dam

Sunny-Hillvue Adonis Twinky EX-94 EEEEE 2E

4-10 2x 365d 40750 3.1 1256 3.0 1242

Life: 2255d 186280 3.8 7047 3.2 5905

Regan-Olmar Dur Storm-ET

61077248 *TV *TL

PTA -936M -24F -15P 94R 1/10

PTA +1.99T +2.44UDC +.28FLC GTPI +1373G

Sunny-Hillvue Exh Twinkle

134422947 Good Plus-81

3-04 2x 365d 24430 3.9 951 3.1 763

5-07 2x 313d 23017 3.8 868 3.0 690 RIP

Sells as Lot 337

LOT 706

SUNNY-HILLVUE PSL JILLIAN

68964168

Born: December 28, 2009

Pine-Shelter Laramee Mor-ET

134170608 Excellent-90 *TR *TV *TL

PTA +965M +0F +23P 93R 1/10

PTA -2.8PL 2.84SCS -2.2DPR

PTA +2.30T +1.35UDC +2.83FLC 88R 81/10

GTPI +1453G

Sunny-Hillvue Pont Jesslyn

138769053

2-00 2x 72d 3632 4.3 157 3.3 119 RIP

Sells as Lot 579

3rd Dam

Rilara Stnhm Chloe Julienne GP-84

5-00 2x 365d 25640 4.2 1067 3.3 842

4th Dam

Rilara SD Julietta Chloe-ET EX-90 EX-MS 3E

7-07 2x 365d 26730 3.8 1006 2.8 740

Life: 2887d 187600 3.7 6910 2.9 5491

Next three Dams Excellent!

Klumbs Durham Pontiac

131348369 Excellent-92 *TV *TL *TR

PTA -105M -39F -19P 99R 1/10

PTA +2.11T +2.92UDC +1.86FLC GTPI +1624G

Sunny-Hillvue Special Jewel

136250234 Good Plus-80

2-01 2x 303d 15200 4.9 750 3.3 504

3-11 2x 242d 14490 4.6 668 3.6 515

3-00 2x 268d 13680 4.7 638 3.5 478

Sells as Lot 416

LOT 707

SUNNY-HILLVUE MARIELA

68964169

Born: January 5, 2010

Gen-Mark Stmatic Sanchez

134422312 Excellent-94 *TR *TV *TL

PTA +819M +7F +20P 92R 1/10

PTA +0.54PL 2.93SCS -1.3DPR

PTA +3.13T +2.48UDC +2.39FLC 88R 1/10

GTPI +1720G

Sunny-Hillvue Advent Marla

138207764 *RC

2-00 2x 254d 11960 4.4 523 3.1 365

2-11 2x 59d 4046 4.4 178 3.0 120 RIP

Sells as Lot 527

Comestar Stormatic-ET

6947936C EX-CAN GM 2/07 *TV *TL

PTA +487M +2F +5P 99R 1/10

PTA +1.68T +1.06UDC +2.17FLC GTPI +1520G

Gen-Mark BW Mar Winnie-ET

131652910 Excellent-90 EEEVV 2E

4-08 2x 365d 43690 3.6 1555 2.7 1172

Life: 1463d 132550 3.6 4737 2.9 3823

KHW Kite Advent-Red-ET

133002953 Excellent-94 *TV *TL *TD

PTA -1189M -19F -27P 99R 1/10

PTA +2.40T +2.29UDC +1.56FLC GTPI +1463G

Sunny-Hillvue Int Marisela

128711826 Excellent-90 EEEVE 2E

7-03 2x 340d 27770 4.6 1267 3.1 865

8-04 2x 365d 27340 4.2 1136 3.2 873

6-03 2x 293d 26330 4.8 1130 3.0 722

5-04 2x 296d 25520 3.8 969 3.0 774

4th Dam

Sunny-Hillvue Lmars Moonlite EX-91 EX-MS 3E

8-09 2x 365d 22210 4.8 1070 3.4 757

Life: 2619d 146450 4.6 6695 3.3 4894

5th Dam

Fradon Concord Fruit VG-85 VG-MS-CAN

8-05 2x 274d 18034 4.4 789 3.0 542

6th Dam

Hanesholm Sheik Kit VG-85-CAN *1 STAR

5-05 2x 305d 17427 4.6 809

Robthom Integrity-ET

2150948 Excellent-96 GM 2/99 *TV *TL

PTA +7M -11F -17P 99R 1/10

PTA +.64T +.62UDC -.60FLC GTPI +1004G

Fradon Marla

15155765 Very Good-89 EEVVV DOM

9-07 2x 365d 27950 3.7 1046 2.8 796

4-01 2x 364d 25440 3.8 971 3.1 778

7-04 2x 365d 23820 4.2 990 3.0 722

6-04 2x 297d 22510 4.3 957 2.9 660

LOT 708

SUNNY-HILLVUE HEIFER CALF

68964170

Born: January 21, 2010

BKB Affirmed-ET

132277541 *TV *TL

PTA -1073M -32F -26P 98R 1/10

PTA -1.1PL 2.72SCS -2.5DPR

PTA +1.94T +1.49UDC +2.02FLC 95R 1/10

GTPI +1181G

Sunny-Hillvue Roy Tiffy

137656341 Very Good-85 VG-MS @ 3-09

2-08 2x 336d 25270 3.3 840 3.0 758

3-09 2x 48d 3607 3.7 132 3.3 118 RIP

Sells as Lot 488

Comestar Lee-ET

5757117C EX-CAN GM 8/03 *TV *TL

PTA -516M +20F -7P 99R 1/10

PTA +1.04T +.64UDC +1.01FLC GTPI +1378G

Shoremar S Alicia-ET

6434408C Excellent-97 EEEEE 3E *BL

6-10 2x 365d 35760 4.3 1544 3.4 1215

• *HHM All-Time All-American 5-Yr-Old Cow*

Roylane Jordan-ET

17064727 Excellent-95 GM 2/04 *TV *TL

PTA -297M -8F -12P 99R 1/10

PTA +1.99T +2.09UDC +.20FLC GTPI +1347G

Sunny-Hillvue RD Tarryn-ET

134865766 Good-77 @ 2-06

2-03 2x 353d 19280 3.5 684 3.1 599

3rd Dam

C Alanvale Inspiration Tina EX-95 2E GMD DOM

6-00 2x 365d 36010 5.1 1829 3.3 1184

Life: 1503d 136010 4.5 6122 3.3 4555

4th Dam

Alanvale Puget Anetia VG-85-CAN

12-0 2x 365d 23812 4.1 970 3.5 827

Life: 11 Lact 203901 4.2 8503 3.5 5600

Regancrest Elton Durham-ET

2250783 Excellent-90 GM 8/01 *TR *CV *TL

PTA -273M -35F +6P 99R 1/10

PTA +2.35T +2.39UDC +2.03FLC GTPI +1550G

Ernest-Anthony Astr Tart-ET

15671857 Excellent-92 EVEEE

3-04 2x 365d 25140 4.3 1103 3.3 844

6-03 2x 365d 24930 4.7 1162 3.3 828

2-03 2x 349d 23110 4.7 1094 3.3 763

4-08 2x 365d 22390 4.8 1071 3.2 719

Life: 1637d 104550 4.6 4849 3.3 3469

LOT 709

SUNNY-HILLVUE HEIFER CALF

68964171

Born: February 2, 2010

Brandt-View Bigtime-ET

138762896 *TR *TV *TL

PTA +1692M +93F +57P 71R 1/10

PTA +3.1PL 2.58SCS -2.3DPR

PTA +2.01T +2.16UDC +1.39FLC 68R 1/10

GTPI +2152G

Sunny-Hillvue Tinc Twinkles

135799019 Very Good-85

4-00 2x 365d 28740 3.3 951 3.2 909

2-02 2x 365d 23510 3.9 906 3.2 746

5-05 2x 36d 2962 4.1 125 3.2 94 RIP

Sells as Lot 397

3rd Dam

Sunny-Hillvue Adonis Twinky EX-94 EEEEE 2E

4-10 2x 365d 40750 3.1 1256 3.0 1242

Life: 2255d 186280 3.8 7047 3.2 5905

4th Dam

Sunny-Hillvue HL Twinket VG-85

6-10 2x 365d 31390 3.9 1237 2.8 886

Life: 2010d 140850 3.9 5563 3.0 4255

Hartline Titanic-ET

123066734 VG-88-CAN GM 8/08 *TV *TL

PTA -730M -26F -16P 99R 1/10

PTA +2.17T +2.67UDC +1.61FLC GTPI +1502G

Sunny-Hillvue Silver Twinky

128709975 Excellent-90 EEEVV

6-01 2x 365d 35070 3.7 1313 2.9 1028

4-09 2x 365d 33560 3.4 1137 3.0 998

Life: 1820d 145330 3.7 5373 3.0 4426

LOT 710

SUNNY-HILLVUE HEIFER CALF

68964172

Born: February 5, 2010

Klassic Big Time-ET

61143535 *TV *TL

PTA +601M +41F +27P 71R 1/10

PTA +6.2T 2.65SCS +0.5DPR

PTA +3.71T +4.01UDC +3.17FLC 68R 1/10

GTPI +2313G

Sunny-Hillvue Fitzy Valeri

138207661 Very Good-85 VG-MS @ 2-07

2-03 2x 357d 19942 4.1 811 3.2 646

3-04 2x 33d 2402 4.3 104 3.4 82 RIP

Sells as Lot 517

Regancrest-HHF Mac-ET

60540164 Excellent-92 GM 8/09 *TV *TL

PTA +53M +17F +3P 99R 1/10

PTA +1.98T +2.97UDC +1.58FLC GTPI +1841G

Regancrest Barbi-ET

62496855 Very Good-85 VVVVV DOM *TL

GTPI +2071G +3.96T +3.39UDC +2.78FLC 1/10

2-00 2x 305d 23290 3.8 894 3.4 781

Penn-Gate Durham Fitzy-ET

135569542 Very Good-89 *TV

PTA -1252M -32F -22P 71R 1/10

PTA +1.75T +1.66UDC +1.38FLC PTPI +1447

Sunny-Hillvue Alf Valiant

134829977 Good-77 @ 3-04 *RC

4-02 2x 365d 24630 3.7 902 3.3 803

2-00 2x 326d 18090 3.1 561 3.2 581

3-01 2x 289d 17030 3.8 643 3.2 548

LOT 711

SUNNY-HILLVUE HEIFER CALF

68964173

Born: February 19, 2010

Rauscher Mars 999-Grand-ET

60839913 Excellent-94 *TR *TV *TL

PTA +1241M +9F +28P 97R 1/10

PTA +2.5PL 3.02SCS

PTA +1.70T +1.44UDC +2.87FLC 93R 1/10

GTPI +1760G

Sunny-Hillvue Rubens Conni

139305942

Sells as Lot 583

3rd Dam

Sunny-Hillvue Das Collette GP-81

7-09 2x 355d 23090 2.7 621 2.8 646

Life: 2149d 130080 3.2 4196 2.9 3792

4th Dam

Sunny-Hillvue CC Counselor VG-87 VEVVV

5-11 2x 365d 26480 3.2 839 3.1 817

Life: 1834d 117050 3.5 4139 3.1 3639

STBVQ Rubens-ET

5844883C VG-CAN GM 8/04 *RC *TV *TL

PTA -568M -19F -1P 99R 1/10

PTA +1.20T +2.08UDC +.15FLC GTPI +1378G

Sunny-Hillvue Chk Colette

133516801 Very Good-85

2-01 2x 328d 20280 3.1 624 2.8 567

4-02 2x 312d 19700 3.8 741 3.1 604

3-01 2x 304d 17230 3.6 624 3.1 530

LOT 713

SUNNY-HILLVUE HEIFER CALF

68964175

Born: February 19, 2010

Autumn-Ridge Matson-ET

133766626 Excellent-94 *TV *TL
PTA -125M +16F +0P 95R 1/10
PTA +1.6PL 2.89SCS -0.3DPR
PTA +1.77T +1.93UDC +2.52FLC 91R 1/10
GTPI +1653G

Sunny-Hillvue FR Collete

139305988
Sells as Lot 586

3rd Dam

Sunny-Hillvue Dur Callie-ET EX-90 VEVVE
4-00 2x 365d 26550 2.7 704 3.2 842

4th Dam

Sunny-Hillvue BS Colette-ET EX-95 2E DOM
7-00 2x 365d 38240 3.7 1432 3.1 1168
Life: 2669d 223044 3.7 8296 3.1 6887

Morsan Frontrunner-ET

7472411C GP-83-CAN ST'09 *RC *TV *TL
PTA -102M +7F +13P 95R 1/10
PTA +1.48T +1.56UDC +.46FLC GTPI +1444G

Sunny-Hillside Os Callipso

135799523 Good-75
3-04 2x 365d 26210 3.3 864 3.0 774
2-01 2x 365d 22140 4.0 881 3.0 669
4-09 2x 195d 16531 4.0 663 3.0 503 RIP
Sells as Lot 409

LOT 714

SUNNY-HILLVUE HEIFER CALF

68964176

Born: March 2, 2010

Rauscher Mars 999-Grand-ET

60839913 Excellent-94 *TR *TV *TL
PTA +1241M +9F +28P 97R 1/10
PTA +2.5PL 3.02SCS
PTA +1.70T +1.44UDC +2.87FLC 93R 1/10
GTPI +1760G

Sunny-Hillvue Tint Carli

139305997
Sells as Lot 587

3rd Dam

Sunny-Hillvue Durham Candy VG-85 VG-MS
2-02 2x 365d 25010 3.5 864 3.1 786

4th Dam

Sunny-Hillvue BC Chancel VG-87 EVEVV *RC
3-03 2x 312d 24270 3.6 866 3.3 797
Life: 1401d 105890 3.8 3981 3.2 3407

Ladino Park Talent-Imp-ET

AUS 930377 Excellent-90 ST'03 *RC *TV *TL
PTA -158M -27F +6P 99R 1/10
PTA +1.97T +2.46UDC +.80FLC GTPI +1464G

Sunny-Hillvue SF Caramel-TW

137266838 Good Plus-80
3-06 2x 365d 23050 3.2 742 3.0 682
2-03 2x 365d 21580 3.7 806 3.1 678
4-10 2x 240d 19248 3.5 667 3.0 574 RIP
Sells as Lot 156

LOT 716

SUNNY-HILLVUE HEIFER CALF

68964178

Born: March 4, 2010

Lawrence-Haven Ashton-Red

61826056 Very Good-87
PTA -1203M -17F -43P 86R 1/10
PTA +0.2PL 2.99SCS -0.5DPR
PTA +.58T +.04UDC +1.80FLC 74R 1/10
TPI +1090

Sunny-Hillvue Snowflakes

136541543 Good-78 @ 4-06
3-04 2x 305d 21470 3.7 790 3.3 712
2-00 2x 365d 19600 4.4 855 3.4 665
Sells as Lot 450

3rd Dam

Sunny-Hillvue CC Snowflake EX-91 EEEVE 3E
5-09 2x 365d 30240 4.1 1231 3.0 901
Life: 1528d 110270 3.8 4160 3.0 3353

4th Dam

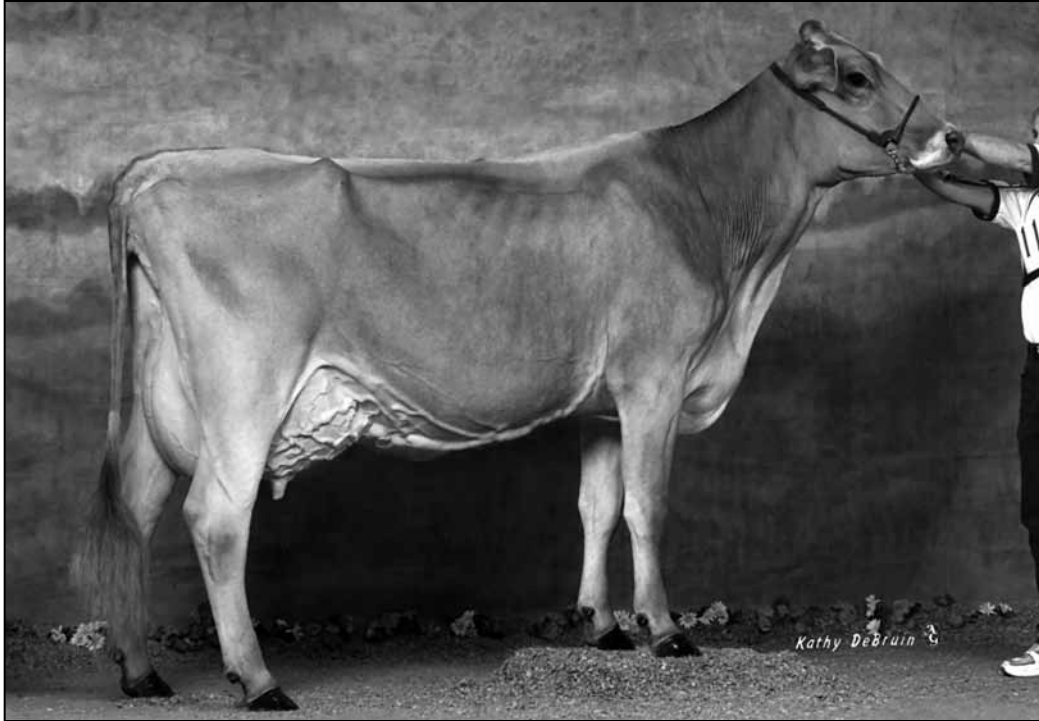
Sunny-Hillvue Astre Colette GP-84 VG-MS
3-03 2x 347d 20520 4.0 819 3.0 611

Slave-Acres True Grit-ET

17278671 Very Good-86 *TV *TL
PTA +4M +8F -3P 99R 1/10
PTA +.35T +.62UDC +.54FLC TPI +1217M

Sunny-Hillvue LJ Snow-ET

131397055 Good Plus-82 @ 4-11
3-01 2x 365d 20530 4.8 977 3.4 708
4-06 2x 350d 17730 4.5 802 3.3 582
2-02 2x 286d 13930 4.0 556 3.3 454



SUNNY HILL COLL LAIYA V88
DAM OF LOTS 1014 & 1019

LOT 1014

Blessing Ensign Broker-ET

194345
PPR -69 PTAT +0.1 91%R 1/10
PTA -936M -44F -24P -145NM\$ 94%R
PTA +1.1PL 2.95SCS -0.4DPR

Sunny Hill Coll Laiya

909678 V88 VG-MS 4/08
4-04 2x 331d 25550 4.1 1053 3.4 866
3-05 2x 301d 25860 3.5 915 3.3 866
2-05 2x 294d 18590 4.2 775 3.4 639

- Jr Champion NC State Fair 2002
- 2nd Jr 3-Yr-Old Cow NC State Fair 2004
- 3rd Jr 3-Yr-Old Cow North American Expo 2004

SUNNY HILL BROKER LOLA

931363 E90 5/03
Born: October 10, 2003 Tattoo 1014
4-11 2x 365d 26098 4.3 1125 3.2 845
3-04 2x 305d 22580 4.1 916 3.2 730
1-11 2x 305d 15840 4.1 644 3.2 500
Dry

Bred: Sept. 3, 2009 to Sunny-Hillvue Jas Atom-ET

R Hart Simon Ensign-ET

184138 V88
PPR +28 99%R PTAT +0.5 99%R 1/10
PTA +313M -19F -7P +169NM\$ 99%R

Blessing Sensation Bria

795050 3E-93 *ELITE*
7-08 2x 365d 35530 4.1 1440 3.7 1307

- Res All-American Aged Cow 1996

R Hart BC Collection *TM

189182 E93
PPR -1 98%R PTAT +0.5 99%R 1/10
PTA +189M +12F +9P -184NM\$ 99%R

Sunny Hill JW Lilly-ET

882510 +82
3-09 2x 343d 22780 4.3 971 3.4 764
2-03 2x 365d 22870 3.8 873 3.3 757
4-09 2x 305d 19080 3.5 671 3.3 637

- 1st Winter Yrlg Heifer NC State Fair 2000

4th Dam

Jessie Improver Lena 5E-E91 *ELITE*
8-11 2x 365d 31310 3.5 1105 3.7 1157
Life: 3796d 239760 3.8 9181 3.5 8469

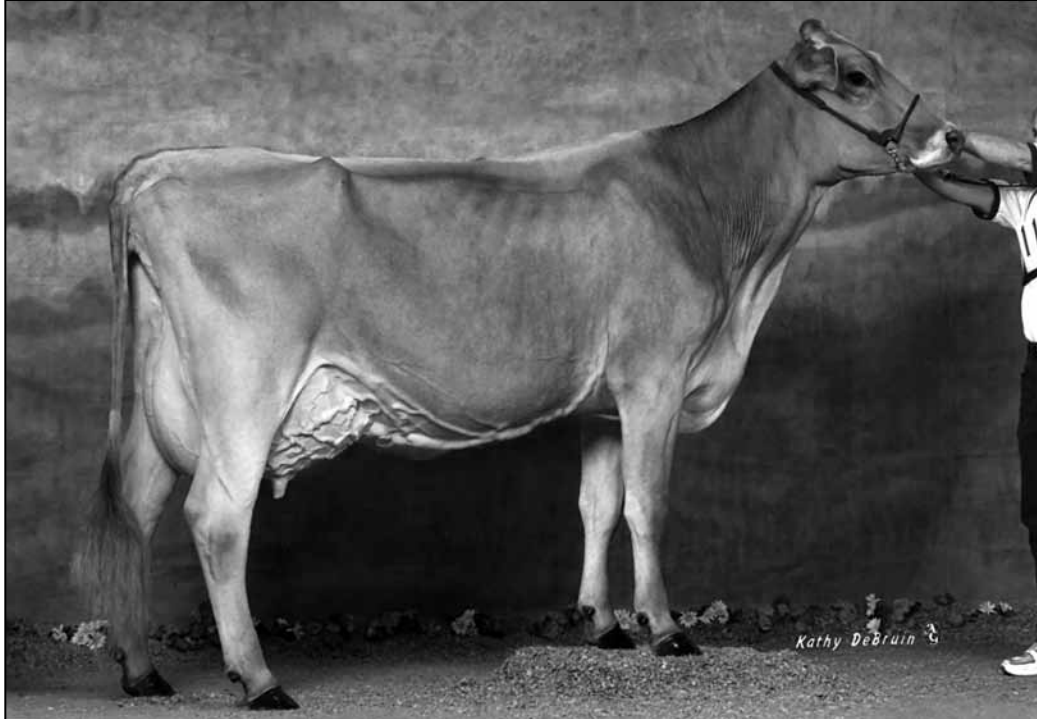
Forest Lawn Simon Jetway ET (M)

185301 E90
PPR -49 PTAT +0.5 99%R 1/10
PTA -40M -4F -11P -285NM\$ 99%R

Meadow Hill Ensign Lila-ET

844570 EX91 E91-MS
3-05 2x 305d 25320 3.4 857 3.3 841

- Grand Champion NC State Fair 1997 & 1998
- 1st Sr 3-Yr-Old Cow NC state Fair 1998
- 1st Sr 2-Yr-Old Cow NC State FAir 1997
- Res Jr Champion NC State Fair 1995



SUNNY HILL COLL LAIYA V88
DAM OF LOTS 1014 & 1019

LOT 1019

Hilltop Acre PR Doninate-ET *TM
190913
PPR +2 98%R PTAT -0.2 96%R 1/10
PTA +648M +30F +9P -116NM\$
PTA -2.2PL 3.22SCS -3.1DPR

Sunny Hill Coll Laiya

909678 V88 VG-MS 4/08
4-04 2x 331d 25550 4.1 1053 3.4 866
3-05 2x 301d 25860 3.5 915 3.3 866
2-05 2x 294d 18590 4.2 775 3.4 639

- Jr Champion NC State Fair 2002
- 2nd Jr 3-Yr-Old Cow NC State Fair 2004
- 3rd Jr 3-Yr-Old Cow North American Expo 2004

SUNNYHILL DOMINAE LUCIOUS

943837 +83 V85-MS
Born: September 19, 2005 Tattoo 1019
2-03 2x 305d 16500 4.3 707 3.1 509
3-11 2x 190d 14560 4.4 640 3.1 447 RIP
Milking 65 lbs/day 4.4%F
Bred: March 5, 2010 to Hilltop Acres En Dynasty-ET

Johann Pete Rose-ET *TW

183773 +84
PPR -64 PTAT -0.4 99%R 1/10
PTA +109M -7F -10P -248NM\$ 99%R

Hilltop Acres Jetway Dixi

803631 2E-E92 *CERT*
5-10 2x 365d 33930 4.5 1512 3.9 1308
Life: 1617d 119070 4.6 5455 3.8 4525

R Hart BC Collection *TM

189182 E93
PPR -1 98%R PTAT +0.5 99%R 1/10
PTA +189M +12F +9P -184NM\$ 99%R

Sunny Hill JW Lilly-ET

882510 +82
3-09 2x 343d 22780 4.3 971 3.4 764
2-03 2x 365d 22870 3.8 873 3.3 757
4-09 2x 305d 19080 3.5 671 3.3 637

- 1st Winter Yrlg Heifer NC State Fair 2000

4th Dam

Jessie Improver Lena 5E-E91 *ELITE*
8-11 2x 365d 31310 3.5 1105 3.7 1157
Life: 3796d 239760 3.8 9181 3.5 8469

Forest Lawn Simon Jetway ET (M)

185301 E90
PPR -49 PTAT +0.5 99%R 1/10
PTA -40M -4F -11P -285NM\$ 99%R

Meadow Hill Ensign Lila-ET

844570 EX91 E91-MS
3-05 2x 305d 25320 3.4 857 3.3 841

- Grand Champion NC State Fair 1997 & 1998
- 1st Sr 3-Yr-Old Cow NC state Fair 1998
- 1st Sr 2-Yr-Old Cow NC State FAir 1997
- Res Jr Champion NC State Fair 1995



S&H CHRISTMAS COOKIES EX-90%
SELLS AS LOT 3003

LOT 3003

S&H HALLMARK KITTY

114196893 Excellent-90% 3-07
Born: September 7, 2004 Tattoo / 003
4-04 2x 328d 18666 4.6 858 3.6 666
2-00 2x 305d 15380 4.5 689 3.4 535
3-06 2x 252d 13880 4.3 592 3.4 476
Dry

Bred: June 4, 2009 to Richies Jace Tbone A364

Schultz Brook Hallmark

661148 29JE3114
USDA 1/10 GPTA 99%R 553M -.09% 7F -.03% 14P
AJCA 1/10 GPTAT 99%R +0.6 JPI 99%R +51

S&H Sambo Kiwi

112670007 Very Good-85%
2-04 2x 305d 11410 5.2 589 3.8 428

3rd Dam

Avonlea L Merit Kiersten EX-94%
4-01 2x 305d 18380 5.1 941 3.8 706

4th Dam

Avonlea Juno Kelsey-ET VG-88-CAN *1 STAR
4-05 2x 305d 12166 4.8 587 4.0 488

5th Dam

Avonlea Valiant Kitty 15N EX-3E CAN
• Four Times All-Canadian in Milking Form

Jeweller Jewel Sambo

110788452 200JE307
USDA 1/10 GPTA -1215M .09% -41F .13% -22P
AJCA 1/10 GPTAT 75%R +0.3 JPI 85%R -94

Milk&Honey Ren Kiersten-ET

111447365 Very Good-82%

LOT 3004

S&H CHRISTMAS COOKIES

114356437 Excellent-90% 3-04
Born: December 18, 2004 Tattoo / 004
4-02 2x 260d 13830 5.1 709 3.4 469
2-00 2x 305d 13460 5.3 712 3.4 455
3-01 2x 279d 13450 4.6 624 3.5 468
5-01 2x 42d 2403 55 133 3.7 89 RIP
Milking 71 lbs/day 4.9%F

All Lynns Bold Ruby-ET

112054106 7JE674
USDA 1/10 GPTA 408M .07% 32F .01% 16P
AJCA 1/10 GPTAT 81%R +0.0 JPI 85%R +93

Milk&Honey Ren Kiersten-ET

111447365 Very Good-82%

3rd Dam

Avonlea Juno Kelsey-ET VG-88-CAN *1 STAR
4-05 2x 305d 12166 4.8 587 4.0 488

4th Dam

Avonlea Valiant Kitty 15N EX-3E CAN
• Four Times All-Canadian in Milking Form

Hollylane Renaissance

JECAN 138720 70JE9984
USDA 1/10 97%R -1396M .01% -63F .03% -45P
AJCA 1/10 PTAT 95%R +0.8 JPI 96%R -112

Avonlea L Merit Kiersten

JECAN594699 EX-94% 5-08
4-01 2x 305d 18380 5.1 941 3.8 706

LOT 3008

S&H IATOL LOUISVILLE

1162777729 Very Good-83% 2-02
Born: October 20, 2007 Tattoo 008 /
2-01 2x 92d 3687 4.0 148 3.4 126 RIP
Milking 43 lbs/day 5.2%F

Bred: March 13, 2010 to Richies Jace Tbone A364

SC Gold Dust Paramount Iatola

112118277 29JE3301
USDA 1/10 GPTA 99%R -93M .10% 15F .05% 6P
AJCA 1/10 GPTAT 99%R 1.8 JPI 97%R 85

SSF Barber Lavender

113081787 Excellent-91% 6-01
3-00 2x 305d 17540 5.5 966 3.6 635
5-07 2x 305d 15640 4.8 748 3.5 555
4-05 2x 305d 14530 5.3 768 3.6 528

3rd Dam

Brass Carmel Eliza of SSF

2-10 2x 305d 15090 5.1 763 3.9 594

WF/L&M Duncan Barber-ET

654500 73JE290
USDA 1/10 GPTA 40M .03% 7F -.05% -8P
AJCA 1/10 GPTAT 99%R -0.1 JPI 99%R -25

SSF Sooner Liza

3948905 Excellent-90% 3-06
6-04 2x 305d 23530 4.3 1021 3.5 816
9-04 2x 305d 18160 4.2 752 3.3 605
8-01 2x 305d 17210 4.2 729 3.5 609

LOT 3009

S&H NORTH STATE KLASSY

1162777710
Born: September 1, 2008 Tattoo 009 /

Due: Sept. 11, 2010 to Richies Jace Tbone A364
7JE1000

Deerview Ole Northstate

67051614 7JE801
USDA 1/10 GPTA 93%R 140M -.06% -4F -.06% -6P
AJCA 1/10 GPTAT 91%R +0.4 JPI 89%R +5

S&H Barretta Kay

113526561 Very Good-80% 3-05
1-11 2x 305d 9050 5.4 487 4.1 371

3rd Dam

Avonlea L Merit Kiersten EX-94%

4-01 2x 305d 18380 5.1 941 3.8 706

4th Dam

Avonlea Juno Kelsey-ET VG-88-CAN *1 STAR

4-05 2x 305d 12166 4.8 587 4.0 488

5th Dam

Avonlea Valiant Kitty 15N EX-3E CAN

• Four Times All-Canadian in Milking Form

Mason Boomer Sooner Berretta

651835
USDA 1/10 GPTA 99%R -9M -27F 7P
AJCA 1/10 GPTAT 99%R 0.6 JPI 99%R 34

Milk&Honey Ren Kiersten-ET

111447365 Very Good-82%

LOT 3011

S&H GOVERNOR KRISTA

116786458
Born: March 1, 2009 Tattoo 3011 /

Griffins Governor-ET

115087248 7JE867
USDA 1/10 GPTA -482M .07% -9F .02% -14P
AJCA 1/10 GPTAT 61%R +0.5 JPI 66%R -20

S&H Christmas Cookies

114356437 Excellent-90% 3-04
4-02 2x 260d 13830 5.1 709 3.4 469
2-00 2x 305d 13460 5.3 712 3.4 455
3-01 2x 279d 13450 4.6 624 3.5 468

3rd Dam

Avonlea L Merit Kiersten EX-94%

4-01 2x 305d 18380 5.1 941 3.8 706

4th Dam

Avonlea Juno Kelsey-ET VG-88-CAN *1 STAR

4-05 2x 305d 12166 4.8 587 4.0 488

5th Dam

Avonlea Valiant Kitty 15N EX-3E CAN

• Four Times All-Canadian in Milking Form

All Lynns Bold Ruby-ET

112054106 7JE674
USDA 1/10 GPTA 408M .07% 32F .01% 16P
AJCA 1/10 GPTAT 81%R +0.0 JPI 85%R +93

Milk&Honey Ren Kiersten-ET

111447365 Very Good-82%

LOT 3999

WILL DO ACTION HOO

115837526

Born: October 17, 2007 Tattoo / WD192

Fresh: March 1, 2010

Forest Glen Avery Action-ET

111023978 7JE590

USDA 1/10 GPTA 159M -.04% 0F -.01% 5P

AJCA 1/10 GPTAT 99%R +2.0 JPI 98%R +101

Will Do Jace Hena

114276683 Very Good-85% 3-09

4-01 2x 305d 21880 4.8 1049 3.6 796

2-00 2x 305d 17620 4.8 852 3.6 629

3-02 2x 277d 17340 4.8 834 3.8 651

3rd Dam

Will Do Alf Hydro EX-91%

4-06 2x 305d 25120 5.0 1250 3.6 895

4th Dam

Will Do Boomer Sooner Hocus VG-89%

3-11 2x 305d 23700 4.6 1093 3.5 826

Windy Willow Montana Jace

110106571 7JE535

USDA 1/10 GPTA 99%R 588M .08% 41F .01% 22P

AJCA 4/09 GPTAT 99%R +1.1 JPI 99%R +118

Will Do Cosmo Hayes-ET

112450993 Very Good-85% 2-11

4-01 2x 305d 22470 4.5 1010 3.2 725

5-01 2x 292d 20980 4.5 953 3.4 707

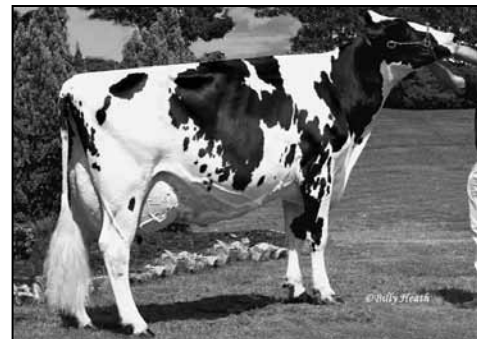
6-00 2x 295d 20490 4.5 919 3.4 696

LOT 4000

SUNNY-HILLVUE MONK-ET

66738845

Born: January 9, 2009



HOLLIDAYS LINJET MOLLY-ET EX-94 EEEEE 2E
DAM OF LOT 4000



DANDYLAND STARBUCK MAGGY EX-95 EEEEE 4E
2ND DAM OF LOT 4000

Erbacres Damion

130263722 Excellent-94 *TV *TL

PTA -379M -53F +5P 99R 1/10

PTA +0.2PL 2.91SCS -0.4DPR

PTA +3.08T +2.28UDC +2.86FLC 99R 1/10

GTPI +1539G

Holidays Linjet Molly-ET

130625946 Excellent-94 EEEEE 2E

7-05 2x 365d 34470 3.8 1293 3.0 1025

2-03 2x 365d 28400 3.5 990 3.2 915

4-09 2x 365d 22520 4.1 914 2.9 650

Life: 1713d 128510 3.9 5010 3.3 4186

• 4th Aged Cow North East Fall/Nat 2008

Regancrest Elton Durham-ET

2250783 Excellent-90 GM 8/01 *TR *CV *TL

PTA -273M -35F +6P 99R 1/10

PTA +2.35T +2.39UDC +2.03FLC GTPI +1550G

Regancrest Encore Dalhia-ET

124287356 Very Good-89 EEEEE

2-01 2x 365d 29250 3.3 971 3.1 913

3-11 2x 365d 26340 3.6 942 3.0 790

Sunnylodge Linjet

5578386C EX-CAN ST'97 *TV *TL

PTA -1696M -28F -38P 99R 1/10

PTA +1.65T +1.70UDC +1.03FLC TPI +1281M

Dandyland Starbuck Maggy

5997050C Excellent-95 EEEEE 4E

5-04 2x 365d 39980 3.8 1531 2.8 1129

4-05 2x 338d 33830 3.4 1156 2.8 934

3-03 2x 365d 33500 3.1 1055 2.9 958

Life: 1451d 135500 3.5 4744 2.9 3885

• 1st 125,000 Lb Cow Southern Parade 2006

• Grand Champion Eastern Fall/Nat 1998

• 1st Sr 3-Yr-Old Cow Eastern Fall/Nat 1997

3rd Dam

Dandyland Eclipse Misty VG-85 VVVV-CAN

4-09 2x 305d 21413 3.1 672 2.9 622

4th Dam

Cartwright Jet Topsy-ET VG-85 VG-MS-CAN

5-10 2x 318d 20514 2.6 534 3.0 617

Life: 7 Lact 112838 2.9 3316 3.0 3349

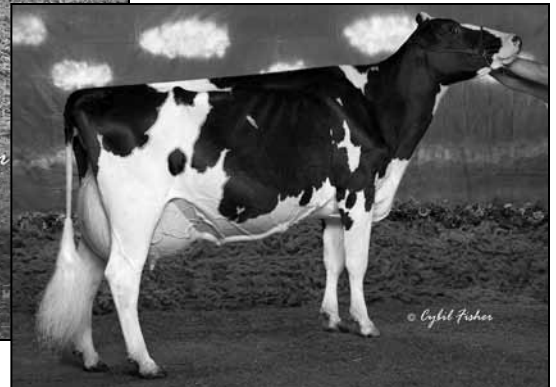
5th Dam

Clemdale Bertrand Anne VG-CAN *2 STAR

Sunny-Hillvue Herd Dispersal



WINDY-KNOLL-VIEW PROMIS-ET EX-95 2E GMD DOM
3RD DAM OF LOT 4001



WINDY-KNOLL-VIEW PLEDGE-ET EX-95 GMD DOM
FULL SISTER TO 2ND DAM OF LOT 4001

LOT 4001

SUNNY-HILLVUE MAT PUNK

66738846

Born: January 24, 2009

PTPI +1664 +2.11T +1.67UDC +2.33FLC 1/10

Autumn-Ridge Matson-ET

133766626 Excellent-94 *TV *TL
PTA -125M +16F +0P 95R 1/10
PTA +1.6PL 2.89SCS -0.3DPR
PTA +1.77T +1.93UDC +2.52FLC 91R 1/10
GTPI +1653G

Wilsondale Sept Pumpkin-ET

62232031 Very Good-87 EX-MS @ 4-02
CTPI +1781 +2.38T +2.13FLC +2.3PL 1/10
3-02 2x 305d 25740 3.2 815 2.8 718
2-01 2x 357d 22800 3.7 937 2.9 661

Regancrest Elton Durham-ET

2250783 Excellent-90 GM 8/01 *TR *CV *TL
PTA -273M -35F +6P 99R 1/10
PTA +2.35T +2.39UDC +2.03FLC GTPI +1550G

Autumn-Ridge Storm Mitzi-ET

122013023 Excellent-91 EEEVE 2E
4-10 2x 365d 32330 4.4 1416 3.1 1013
Life: 1434d 103700 4.7 4828 3.3 3374

Pursuit September Storm-ET

6820564C EX-CAN GM 2/07 *RC *TV *TL
PTA -194M +35F -11P 99R 1/10
PTA +2.05T +1.69UDC +2.79FLC GTPI +1495G

Windy-Knoll-View Prosper-ET

132816038 Very Good-87 VG-MS @ 4-01
3-11 2x 365d 31530 4.3 1364 2.9 926
2-01 3x 365d 27320 4.1 1109 3.1 838
Life: 1318d 100260 4.0 4056 3.0 3043

Full sister to Prosper

Windy-Knoll-View Pledge-ET EX-95 2E GMD DOM

4-01 2x 365d 41190 3.8 1577 3.0 1237
• All-American 5-Yr-Old Cow 2007
• HHM All-American 125,000 Lb Cow 2008

4th Dam

Windy-Knoll-View Ultimate Pala EX-94 3E DOM

5-08 2x 365d 27970 4.5 1267 3.3 932
Life: 2134d 123650 4.7 5777 3.5 4077

- 1st Dry Aged Cow Eastern National 1992
- Five-Time All-Pennsylvania Winner
- Nom All-American Produce of Dam 1995

Comestar Outside-ET

6026421C EX-CAN EXTRA'98 GM *TV *TL
PTA +280M +36F -4P 99R 1/10
PTA +1.28T +1.13UDC +1.63FLC GTPI +1742G

Windy-Knoll-View Promis-ET

18049401 Excellent-95 EEEEE 2E DOM *TV *TL
4-08 2x 365d 44120 3.7 1633 3.2 1401
3-05 2x 365d 34670 3.8 1327 3.2 1106
Life: 1680d 143630 3.7 5339 3.5 4984

- Res All-American 5-Yr-Old 2003
- HM All-American Sr 3 Yr Old Cow 2001
- Int Champion Eastern National 2001

LOT 280

GRADE HOLSTEIN

55VBW7465

Born: November, 2004

4-04 2x 365d 29332 3.1 914 2.9 840

2-03 2x 305d 21600 2.9 633 2.8 596

Milking 68 lbs/day

Bred: Jan. 4, 2010 to BVK Durham Duty-ET

Wa-Del Convincer-ET

2249055 Excellent-95 *CV *TL

PTA +550M +30F +14P 99R 1/10

PTA -3.2PL 3.17SCS -2.3DPR

PTA +.04T -.25UDC +.30FLC 99R 1/10

GTPI +1191G

Unknown

Emprise Bell Elton

1912270 Excellent-95 *CV *BL

PTA -78M -3F +7P 99R 1/10

PTA -.81T -.84UDC +1.16FLC GTPI +11148G

Wa-Del Cleitus Cindy-ET

13372706 Excellent-92 2E GMD DOM

6-07 2x 365d 33721 4.0 1362 3.1 1047

Life: 1546d 122277 3.9 4794 3.0 3719

Unknown

Unknown

Notes



Holstein Association Recommended Terms and Conditions for Public Sales EFFECTIVE MARCH 2, 1996 - Amended October 1, 1997, June 28, 2000 and June 23, 2002

TERMS: The terms of the sale are cash unless arrangements are made prior to the sale. Satisfactory settlement must be made with the clerk of the sale immediately after the close of the sale. Only when the above conditions are met will the buyer be entitled to the warranties listed below. Animals will be released only on a signed order from the clerk when presented to the barn superintendent. In no case will animals be released unless settlement is made with the clerk of the sale.

EXPORT SALES: Arrangements regarding health requirements and health tests for a specific importing country shall be a matter of agreement prior to the sale between seller and potential buyer. Otherwise, the buyer assumes all responsibilities for all health tests.

BIDS: The highest bidder shall be the buyer. Bidding parties or their agents are responsible for all bids placed. Every animal or lot is pledged to absolute sale. In case of dispute, the animal or lot shall again be put up for advance bids, and if there be no advance bid, the animal or lot shall be sold to the person from whom the auctioneer on the stand accepted the last bid. In case two or more claim the bid, the auctioneer in the box shall indicate the party whose bid he recognized. Other claimants will be given an opportunity to increase the bid and bidding will be restricted to the two or more claimants.

BY-BIDDING: Bidding directly or indirectly on an animal or lot in which the bidder or any person for whom the bid is made has an ownership interest is prohibited unless the intention to bid is disclosed specific to each animal in the catalog and announced when the animal enters the ring.

RISK: All animals located at sale site are at the purchaser's risk as soon as struck off, but will be cared for free of charge for 24 hours. Purchasers must make arrangements for the care of their purchases beyond the 24 hour period, unless sold for export in keeping with separate terms. Animals are solely at the consignors risk prior to selling in the event of fire or other eventuality.

CERTIFICATES OF REGISTRATION will be furnished by the seller showing transfer on the records of the Holstein Association to the purchaser and will be provided free of charge within a reasonable period of time.

WARRANTIES:

- 1) Each consignor warrants clear title to the animal or lot, and the right to sell same.
- 2) To the best of the seller's knowledge, each animal is sound and healthy in every respect and embryos have been recovered, processed, frozen, transferred and graded in keeping with IETS recommendations unless otherwise noted in the catalog or announced from the auction stand. Every precaution will be taken to represent the physical condition of each animal or embryo, donors or recipients exactly as is known. Examination of all purchases should be made immediately after the purchase and before the close of the sale, and if found not to be as represented, complaint must be reported to the sale management before the close of the sale. In the event no complaint is filed, it is understood that the buyer assumes full ownership in the case of animals at sale site together with all risks, after which no representations of the seller can be challenged through the sale management. Heifers that never calved are in no way guaranteed as to the condition of their udders following calving. No guarantee is made concerning freedom from hardware unless so announced.
- 3) The consignor guarantees his animals to be breeders, but not beyond the purchase price, with the following understanding:
 - a. **Males** - Should any bull after reaching the age of four teen months fail to prove a breeder after being used for four months on cows known to be breeders, the matter shall be reported in writing to the consignor within three months of stated limit who shall then have the privilege of four months time in which to prove the bull a breeder, before refunding the purchase price or making other settlement satisfactory to the buyer.

b. **Females** - Any female when sold that has freshened normally within ninety days prior to the date of sale is, by that fact considered a breeder, except where the freshening is the result of embryo

time she reaches the age of twenty-one months; after having been bred to a bull known to be a breeder, and after having been examined/treated by a licensed veterinarian, the matter shall be reported in writing to the seller within three months of the stated limit. The seller shall then have the privilege of four months time in which to prove the animal a breeder by service to a Registered Holsteiner before refunding the purchase price or making other settlement satisfactory to the buyer. In case an unfreshened heifer repeats fails to carry a natural pregnancy to term she must be considered non-breeder. Pregnancy through embryo transfer does not qualify a female as a breeder. Females bred when sold and pronounced calf are presumed to be pregnant but pregnancy is not guaranteed unless so announced. The seller makes no warranty that pregnant cows will deliver calves or that they will carry calves full term.

c. If, after the sale, embryos or oocytes are recovered from a female or she is superovulated, this negates the breeding warranty unless there is a separate written agreement between buyer and seller.

SHIPPING: Assistance will be given in shipping the animals after the sale. All costs, risks and responsibility will be borne by the purchaser, with the exception of special terms for export purchases. Transportation charges on all animals subject to adjustment shall be paid by the shipper.

PEDIGREE INFORMATION: All production, classification, type and production summaries are current. Only records recognized by the Association are acceptable for pedigrees and used with type of record shown in pedigrees contained herein and are identified as to type of record. Any production or classification records supplied by the seller or consignor will be provided as identified as provided by owner.

PARTNERSHIPS AND SYNDICATES: In each case of a multiple-owner animal, each person or firm included on ownership will be identified.

EMBRYO TRANSFER: All registered animals that have resulted from embryo transfer are identified with the suffix ET in the name. Any unregistered animals that resulted from ET are so identified. Any manipulation of aspirating oocytes, in vitro fertilization and maturation, splitting, nuclear transfer or other technology will be identified and will be a matter of record in the Association office. Donor dams are identified.

HEALTH WARRANTY: The seller will provide an official health certificate to the buyer for each animal showing the results of all health tests, in preparation for this sale including but not limited to the following:

Tuberculosis - Each animal other than calves under four months of age has passed a negative test for tuberculosis within thirty days of date of sale. Type of test will be shown.

Brucellosis - Each animal, other than un-cataloged baby calves, and one calfhood vaccinated females under twenty months of age, has passed a negative test for brucellosis within thirty days of sale.

Requirements for tuberculosis and brucellosis may be modified in those areas that are brucellosis and/or tuberculosis free when limited dispersion via a free area is obvious and as may be dictated by state regulations.

Other health warranties in this sale shall be disclosed. The results of a future health test is not guaranteed.

JOHNE'S DISEASE: No animal is warranted to be free of Johne's Disease. The seller and sale management hereby notify buyers that all animals are sold with no warranty. Any animal that is a member of a herd enrolled in an official state supervised Herd Health Program may be identified as such with status level shown.

ERRORS: The material in this catalog has been carefully edited. If any errors or omissions are discovered, they will be announced. Such announcements take precedence over the matter of print in this catalog, except those pertaining to by-bidding.

ACCIDENT: The sale management, the consignors, and the owner of the grounds will not be responsible in any case for the condition of the grounds or the behavior of the animals and disclaim liability in the event of personal accident or property loss.

Index

BEATYVIEW MACY SKY FAME	61	SUNNY-HILLVUE D COLETTE-ET	250	SUNNY-HILLVUE K COLETTE-RED	490
B-H SHF PT LORETTA	405	SUNNY-HILLVUE DDEE PERFORM	509	SUNNY-HILLSIDE KGA KAYLIE	602
BIG-ELM CHAMPIONN NITE	463	SUNNY-HILLVUE DML CARSON	671	SUNNY-HILLVUE KGA LONNA	605
CHARLESDALE HI METRO SPICE	108	SUNNY-HIIVUE DRAKE CAMI	568	SUNNY-HILLVUE KITE JOSSALYN	381
CHARLESDALE MRS SHADE	535	SUNNY-HILLVUE DRAKE MICAYLA	542	SUNNY-HILLVUE KITE JOY	508
CLEMSON MURPHY 7519 LEE-ET	12	SUNNY-HILLVUE DRK SNOWYDAY	504	SUNNY-HILLVUE KITE PENELOPE	540
COTTONCREST ASP ROXY-ET	627	SUNNY-HILLVUE D SNOWBUNNI-ET	446	SUNNY-HILLVUE LATH CANDI	623
DAR-LYNDA LOU LOU LEE	572	SUNNY-HILLVUE DUND CHERISH	441	SUNNY-HILLVUE LAUREN SLENA	698
DAR-LYNDA S NELLIE	670	SUNNY-HILLVUE DUNDEE ANDI	530	SUNNY-HILLVUE LAURIN ANGEL	688
ED-BOB SHF ANNETTE	371	SUNNY-HILLVIEW DUNDEE BIANCA	546	SUNNY-HILLVUE LAVOR DINA	702
GATMAR TALENT MAG	46	SUNNY-HILLVUE DUN MAGGIEMAY	567	SUNNY-HILLVUE LAVOR REN	694
GOLDCREST DAMION RAZELLE	22	SUNNY-HILLVUE DUN SNOWLILLY	551	SUNNY-HILLVUE LEE CLAIRE-ET	345
KINGSMILL DURHAM TRINKET	60	SUNNY-HILLVUE DUN TWIZ	529	SUNNY-HILLVUE LLPORSCHÉ	687
OLDMT FORBIDN MARINA	443	SUNNY-HILLVUE DURH MOONPIE	373	SUNNY-HILLVUE LOU CHLOE	624
RICHDALE SN DUCHESS	454	SUNNY-HILLVUE DUTY GAIL	634	SUNNY-HILLVUE LOU COLETTE	570
RILARA OTSIDE FANNY ABBIE-ET	18	SUNNY-HILLVUE DUTY KALA	653	SUNNY-HILLVUE LOU DANI	641
RILARA STORMIN TILLY	594	SUNNY-HILLVUE DUTY KARY	659	SUNNY-HILLVUE LOU SNOWBIZ	555
RON-ROU ROY KARA	503	SUNNY-HILLVUE EASTON CARLI	596	SUNNY-HILLVUE MAGNUM WREN	685
SUNNY-HILLVUE ACES RIDE	556	SUNNY-HILLVUE EB CASSIE	545	SUNNY-HILLVUE MARIELA	707
SUNNY-HILLVUE ACES SERENITY	571	SUNNY-HILLVUE EBD DANA	558	SUNNY-HILLVUE MARIELLA	654
SUNNY-HILLVUE ADV COLETTE	507	SUNNY-HILLVUE ED SNOWANGEL	553	SUNNY-HILLVUE MAT COLETTE	672
SUNNY-HILLVUE ADVENT MARLA	527	SUNNY-HILLVUE EISEN COLETTE	547	SUNNY-HILLVUE MAT JOYFUL	650
SUNNY-HILLVUE AFF KIARA	676	SUNNY-HILLVUE ELAND MARILYN	378	SUNNY-HILLVUE MAT SUNSHINE	656
SUNNY-HILLVUE A FIREFLY-RED	511	SINNY-HILLVUE EOMIR KIP	648	SUNNY-HILLVUE MIL ANGELINA	534
SUNNY-HILLVUE AM WYONA	669	SUNNY-HILLVUE EOMIR MOONY	637	SUNNY-HILLVUE MILE KENZY-TW	531
SUNNY-HILLVUE ASP MACI	632	SUNNY-HILLVUE ERD ABBIELYN	600	SUNNY-HILLVUE MK CONSTANCE	544
SUNNY-HILLVUE ASP TONDA-TW	620	SUNNY-HILLVUE ERD MINDI	585	SUNNY-HILLVUE MOD ANGELICA	273
SUNNY-HILLVUE ASP TONI	625	SUNNY-HILLVUE ERD WINSLEY	599	SUNNY-HILLVUE MP JODI	577
SUNNY-HILLVUE ASP TOYA-TW	621	SUNNY-HILLVUE EW ELLA	477	SUNNY-HILLVUE MRSAM CLASSIC	520
SUNNY-HILLVUE AST COLETTA	658	SUNNY-HILLVUE EX ANDREA	589	SUNNY-HILLVUE MRSAM OREO	518
SUNNY-HILLVUE AST CYDNEY	678	SUNNY-HILLVUE EXH TWINKLE	337	SUNNY-HILLVUE MRSHL WHITNEY	230
SUNNY-HILLVUE AST DONA	691	SUNNY-HILLVUE EXSP CHICKY	384	SUNNY-HILLVUE NILES ANDREA	590
SUNNY-HILLVUE AST KARRIS	661	SUNNY-HILLVUE FITZY VALERI	517	SUNNY-HILLVUE OS CALLIPSO	409
SUNNY-HILLVUE AST PRICILLA	674	SUNNY-HILLVUE FORT EMMA	635	SUNNY-HILLSIDE PDR WINSLET	604
SUNNY-HILLVUE AST REBA	606	SUNNY-HILLVUE FORTN MALLY	581	SUNNY-HILLVUE PERK TINK	619
SUNNY-HILLVUE ASTR KELI	631	SUNNY-HILLVUE FORT TWILA	628	SUNNY-HILLVUE PIER TWINK	651
SUNNY-HILLVUE AST TINA	705	SUNNY-HILLVUE FR COLETTE	586	SUNNY-HILLVUE PONT JESSLYN	579
SUNNY-HILLVUE AST TYRA	608	SUNNY-HILLVUE FRTN MELLY-TW	595	SUNNY-HILLVUE PONT TRISTEN	550
SUNNY-HILLVUE ASTRO CHARM	470	SUNNY-HILLVUE GLDN MERCI-ET	565	SUNNY-HILLVUE PRIME TART-ET	472
SUNNY-HILLVUE ASTRONOM JADE	468	SUNNY-HILLVUE GOLDN DAFFNEY	563	SUNNY-HILLVUE PRO KALEIGH	561
SUNNY-HILLVUE ASTRO RITZ	479	SUNNY-HILLVUE GRAND DORI	613	SUNNY-HILLVUE PRO KEYLEE	574
SUNNY-HILLVUE BEAV CHANCE	366	SUNNY-HILLVUE GRAND KINZ	664	SUNNY-HILLVUE PRO LILLIAN	559
SUNNY-HILLVUE BLITZ COLETTE	484	SUNNY-HILLVUE GRND TWINK	666	SUNNY-HILLVUE PRO MARLA	400
SUNNY-HILLVUE BLITZ FIRE	491	SUNNY-HILLVUE GSS SANGRIA	663	SUNNY-HILLVUE PRON SARAH	633
SUNNY-HILLVUE BRAX JACI	626	SUNNY-HILLVUE HI COLETTE	451	SUNNY-HILLVUE PROOF REECE	668
SUNNY-HILLVUE BRAXT TIFFLY	643	SUNNY-HILLVUE HIMET TRIXIE	428	SUNNY-HILLVUE PROOF WINTRY	582
SUNNY-HILLVUE BS PRECIOUS	652	SUNNY-HILLVUE HM LAUREL	407	SUNNY-HILLVUE PSL BRIANA	667
SUNNY-HILLVUE CAROLIN	275	SUNNY-HILLSIDE JACK PRIN	607	SUNNY-HILLVUE PSL JILLIAN	706
SUNNY-HILLVUE CHRISTMAS EVA	580	SUNNY-HILLVUE JAS ALYSSA-ET	612	SUNNY-HILLVUE PTS COLLEEN	675
SUNNY-HILLVUE DAMIONS LADY	575	SUNNY-HILLVUE JAS DARLA-ET	618	SUNNY-HILLVUE RAMPAG PETALS	514
SUNNY-HILLVUE DANTE CORALEE	498	SUNNY-HILLVUE JESABELL	679	SUNNY-HILLVUE RB COLETTE	402
SUNNY-HILLVUE DCHAN DIXIE	665				

Index

SUNNY-HILLVUE RB FARAH-RED	682	SUNNY-HILLVUE TMF DIXIE	578
SUNNY-HILLVUE RBN CHIKYBABY	492	SUNNY-HILLVUE TNT FILLY-RED	636
SUNNY-HILLVUE RBN PRISSELLA	494	SUNNY-HILLVUE TNT FINESS	610
SUNNY-HILLVUE R COLLEEN	603	SUNNY-HILLVUE TTNC TWINKLES	397
SUNNY-HILLVUE RD CHARMED-ET	231	SUNNY-HILLVUE TWINKLETOES	476
SUNNY-HILLVUE RD TAVIA-ET	287	SUNNY-HILLVUE TWIT SPARKLE	526
SUNNY-HILLVUE RJ TICKLES-ET	430	SUNNY-HILLVUE WJ ADDISON-ET	646
SUNNY-HILLVUE RLJ COLETTE	462		
SUNNY-HILLVUE RLJ DORION	501		
SUNNY-HILLVUE ROSS FIONA	601	BROWN SWISS	
SUNNY-HILLVUE ROY ALONA	614	SUNNY-HILL BROKER LOLA	1014
SUNNY-HILLVUE ROY CORAL	460	SUNNYHILL DOMINAE LUCIOUS	1019
SUNNY-HILLVUE ROY DONNA	474		
SUNNY-HILLSIDE ROY LONA	640		
SUNNY-HILLVUE ROY PETALS	486	JERSEY	
SUNNY-HILLVUE ROY SNOWPIE	609	S&H CHRISTMAS COOKIES	3004
SUNNY-HILLVUE ROU SUGAR	65	S&H GOVERNOR KRISTA	3011
SUNNY-HILLVUE ROY TIFFY	488	S&H HALLMARK KITTY	3003
SUNNY-HILLVUE RUBENS CONNI	583	S&H IATOL LOUISVILLE	3008
SUNNY-HILLVUE RUB JAYLEEN	554	S&H STATE KLASSY	3009
SUNNY-HILLVUE RUDY WILLOW	495	WILL DO ACTION HOO	3999
SUNNY-HILLVUE SAN CANDACE	704		
SUNNY-HILLVUE SANC ELLIEMAY	543		
SUNNY-HILLVUE SAN ELICIA	662	MALES	
SUNNY-HILLVUE SAN KENDRA	700	SUNNY-HILLVUE MONK-ET	4000
SUNNY-HILLVUE SAN TERI	686	SUNNY-HILLVUE MAT PUNK	4001
SUNNY-HILLVUE SATRN COLETTE	500		
SUNNY-HILLVUE SB CHARLA	591		
SUNNY-HILLVUE SB TRICKY	592		
SUNNY-HILLVUE SF CAMEL-TW	156		
SUNNY-HILLVUE SNOWCREAME	515		
SUNNY-HILLVUE SNOWFLAKES	450		
SUNNY-HILLVUE SOCK	525		
SUNNY-HILLVUE SOCKS LELAND	300		
SUNNY-HILLVUE SPECIAL JEWEL	413		
SUNNY-HILLVUE SPIRTE MARCY	693		
SUNNY-HILLVUE SPIRTE TRACI	564		
SUNNY-HILLVUE SPIRTE TWINKY	695		
SUNNY-HILLVUE SRS SADIE	611		
SUNNY-HILLVUE SRS WANDA	629		
SUNNY-HILLVUE SS CAMISOL-TW	435		
SUNNY-HILLVUE SS MARIA	655		
SUNNY-HILLVUE SS MOLLI	588		
SUNNY-HILLVUE STOMTIC TONYA	331		
SUNNY-HILLVIEW STORM DILLIA	521		
SUNNY-HILLVUE STORM MELODY	522		
SUNNY-HILLVUE STORM TWINK	524		
SUNNY-HILLSIDE TALNTS PROMIS	562		
SUNNY-HILLVUE TARTIME	438		
SUNNY-HILLVUE TITAN TWINKS	422		
SUNNY-HILLVUE TITNIC ANDREA	426		
SUNNY-HILLVUE TLNT CARLI	587		

Notes
