

LOT 454

RICHDALE SN DUCHESS

137266931 Good Plus-82 @ 4-05

Born: July 15, 2005

2-00 2x 341d 20540 4.3 888 3.1 640

3-11 2x 260d 16536 4.3 715 2.9 480 RIP

Milking 30 lbs/day 5.4%F

Bred: Sept. 15, 2009 to Maple-Downs-I G W Atlantic

Highland-H Stormin Norman

122217650 Excellent-94 *TV *TL

PTA -1200M -17F -31P 99R 1/10

PTA -3.2PL 2.71SCS -0.5DPR

PTA +.93T +.76UDC +1.14FLC 99R 1/10

GTPI +1106G

Farquhar Rudolph Dutches-ET

132073192 Very Good-88 EX-MS

3-08 2x 286d 21080 3.9 830 3.2 680

4-07 2x 352d 19770 4.6 902 3.3 656

2-07 2x 305d 16800 4.6 777 3.4 564

Maughlin Storm-ET

5457798 EX-CAN GM 8/04 *B/R *TV *TL

PTA -73M +26F -4P 99R 1/10

PTA +.96T +.85UDC +1.36FLC GTPI +1425G

Highland-H Astre Nestle-ET

15849770 Very Good-87

4-09 2x 305d 31340 3.9 1235 3.3 1032

Life: 1169d 100311 4.1 4074 3.3 3307

Startmore Rudolph-ET

5470579C EX-CAN GM 8/07 *TV *TL

PTA +606M +7F +18P 99R 1/10

PTA +.09T +.26UDC -.97FLC GTPI +1619G

Farquhar Starbuck Deigh-ET

4468766C VG-87 VG-MS-CAN *1 STAR

11-10 2x 365d 26345 3.7 983 3.2 852

9-00 2x 365d 25064 4.0 1010 3.3 836

13-5 2x 322d 24561 3.6 875 2.9 705

6-03 2x 365d 24015 3.9 941 3.2 767

Life: 3542d 219731 3.6 8449 3.2 7081

3rd Dam

Meadow Bridge N J S Dusty EX-CAN *2 STAR

5-05 2x 365d 25606 3.7 937

Life: 6 Lact 130248 3.7 4775

4th Dam

Meadow Bridge R M Della EX-CAN *4 STAR

10-8 2x 365d 27569 4.1 1118

Life: 10 Lact 202878 4.0 8131

5th Dam

Meadow Bridge Empress Dora VG-86 *5 STAR

5-10 2x 329d 22956 3.7 853

Life: 7 Lact 142627 3.6 5205

6th Dam

Meadow Bridge Shamrock Dora VG-CAN *3 STAR

7-06 2x 335d 20591 4.0 818

7th Dam

Meadow Bridge Re-Echo Debbie VG-CAN *3 STAR

4-09 2x 305d 18283 3.5 646

8th Dam

Star Pietje Elmogram VG-CAN *2 STAR

LOT 460

SUNNY-HILLVUE ROY CORAL

136875835 Very Good-85 VG-MS @ 4-03

Born: September 16, 2005

2-02 2x 350d 23830 4.0 947 3.1 729

3-03 2x 321d 20080 3.5 698 3.1 616

4-05 2x 21d 1778 4.8 85 3.6 64 RIP

Milking 102 lbs/day 4.3%F

Fresh: February 17, 2010

Ked Juror-ET

2124357 Good Plus-82 GM 2/01 *TV *TL

PTA -141M -10F -9P 99R 1/10

PTA +.79T +.95UDC -.97FLC GTPI +1270G

Firdell Aerostar Babette-ET

14504541 Excellent-90 VEVVE GMD DOM

3-02 2x 365d 41140 3.9 1542 3.0 1245

2-01 2x 344d 31570 3.8 1195 3.1 967

Marcrest Encore

2048702 Excellent-96 GM 2/99 *TV *TL

PTA -931M -25F -27P 99R 1/10

PTA +1.02T +.81UDC -.26FLC GTPI +1007M

Sunny-Hillvue Int Comic

17186225 Very Good-87 VEVVV @ 3-07

6-11 2x 365d 31950 3.3 1064 2.6 843

4-07 2x 304d 28800 3.4 965 2.7 789

2-04 2x 365d 26440 3.7 984 2.8 745

3-07 2x 317d 25420 4.0 1023 3.0 775

Life: 1912d 149720 3.6 5387 2.8 4185

4th Dam

Sunny-Hillvue Benefit Conny VG-86 VVEVV

5-01 2x 346d 26058 3.7 962 2.5 652

Life: 1636d 118618 3.6 4282 2.6 3035

5th Dam

Sunny-Hillvue Bova Caroline GP-83

4-05 2x 365d 23520 3.2 743

Roylane Jordan-ET

17064727 Excellent-95 GM 2/04 *TV *TL

PTA -297M -8F -12P 99R 1/10

PTA -1.9PL 3.09SCS +0.1DPR

PTA +1.99T +2.09UDC +.20FLC 99R 1/10

GTPI +1347G

Sunny-Hillvue Enc Comedy

129666839 Good-78 @ 3-05

4-02 2x 330d 28890 3.4 979 2.9 841

2-00 2x 363d 21340 4.1 879 3.1 660

3-01 2x 298d 16530 3.4 565 3.1 515

Robthom Integrity-ET

2150948 Excellent-96 GM 2/99 *TV *TL

PTA +7M -11F -17P 99R 1/10

PTA +.64T +.62UDC -.60FLC GTPI +1004G

Sunny-Hillvue LDM Comfort

15591683 Good-76

3-02 2x 365d 26100 3.9 1014 2.9 745

2-01 2x 353d 25550 3.6 923 2.7 683

4-10 2x 365d 25180 3.5 870 2.8 714

LOT 462

SUNNY-HILLVUE RLJ COLETTE

136875862 Excellent-90 VEVVE @ 4-03
 Born: September 22, 2005
 2-03 2x 365d 23560 4.5 1059 3.2 764
 4-00 2x 155d 10630 5.2 556 3.5 372 RIP
 Milking 73 lbs/day 5.3%F

Bred: Feb. 26, 2010 to Golden-Oaks Sr Alexander-ET

Ked Juror-ET

2124357 Good Plus-82 GM 2/01 *TV *TL
 PTA -141M -10F -9P 99R 1/10
 PTA +.79T +.95UDC -.97FLC GTPI +1270G

Firdell Aerostar Babette-ET

14504541 Excellent-90 VEVVE GMD DOM
 3-02 2x 365d 41140 3.9 1542 3.0 1245
 2-01 2x 344d 31570 3.8 1195 3.1 967

Regancrest Elton Durham-ET

2250783 Excellent-90 GM 8/01 *TR *CV *TL
 PTA -273M -35F +6P 99R 1/10
 PTA +2.35T +2.39UDC +2.03FLC GTPI +1550G

Sunny-Hillvue TL Chelsy-ET

17155549 Very Good-86 VG-MS
 5-01 2x 321d 20660 3.8 785 3.2 654
 6-02 2x 365d 19660 4.4 857 3.1 605
 7-05 2x 296d 19740 4.1 814 3.0 597
 Life: 1937d 113860 4.1 4724 3.2 3605



SUNNY-HILLVUE RD CHENELLE EX-93 EEEEE 2E
 DAM OF LOT 462

Roylane Jordan-ET

17064727 Excellent-95 GM 2/04 *TV *TL
 PTA -297M -8F -12P 99R 1/10
 PTA -1.9PL 3.09SCS +0.1DPR
 PTA +1.99T +2.09UDC +.20FLC 99R 1/10
 GTPI +1347G

Sunny-Hillvue RD Chenelle

131813890 Excellent-93 EEEEE 2E
 6-04 2x 365d 32030 3.4 1105 3.1 981
 4-01 2x 365d 31530 4.1 1281 3.2 1007
 3-02 2x 287d 19290 4.3 834 3.3 645
 2-01 2x 343d 19140 3.8 724 3.4 654

3rd Dam

Sunny-Hillvue BS Colette-ET EX-95 2E DOM

7-00 2x 365d 38240 3.7 1432 3.1 1168
 Life: 2669d 223044 3.7 8296 3.1 6887

• 2nd Aged Cow Eastern Fall/Nat 1996

4th Dam

Knox-Hill Sexation Colette EX-93 2E DOM

6-00 2x 347d 30330 4.0 1204 3.0 980
 Life: 1452d 104450 3.9 4035 3.0 1870

LOT 463

BIG-ELM CHAMPION NITE

136875871 Good Plus-81 @ 4-03
 Born: September 22, 2005
 1-11 2x 316d 18090 4.2 756 3.1 569
 2-09 2x 286d 11430 4.3 494 3.5 396
 3-10 2x 208d 15646 4.2 653 3.0 471 RIP
 Milking 74 lbs/day 4.7%F

Bred: Dec. 12, 2009 to Maple-Downs-I G W Atwood-ET

Startmore Rudolph-ET

5470579C EX-CAN GM 8/07 *TV *TL
 PTA +606M +7F +18P 99R 1/10
 PTA +.09T +.26UDC -.97FLC GTPI +1619G

Skys-The-Limit Claire-ET

15386863 EX-CAN *9 STAR
 3-05 2x 365d 30624 4.3 1303 3.5 974
 • Res All-American Jr 3-Yr-Old Cow 1997

Oseana Integrity Ace-ET

130031495 Excellent-90 *TV *TL
 PTA -910M -59F -42P 99R 1/10
 PTA +.63T +.29UDC -.07FLC GTPI +864G

Hickory-Green HR Val Nis-ET

17152785 Excellent-91 EEEVE
 8-08 3x 305d 32830 5.0 1656 3.3 1079
 3-11 2x 365d 28860 4.5 1306 3.2 936
 7-02 3x 305d 26190 3.8 996 2.9 750
 5-04 2x 365d 22520 4.8 860 3.1 698
 Life: 2435d 170720 4.2 7188 3.2 5396

Calbrett-I H H Champion-ET

6961162 EX-CAN GM 2/07 *TV *TL
 PTA +1055M +21F +22P 99R 1/10
 PTA +0.1PL 2.80SCS -1.1DPR
 PTA +1.20T +.47UDC -.12FLC 99R 1/10
 GTPI +1543G

Big-Elm Ace Nellie

134238241 Good Plus-83 @ 3-08
 2-04 2x 294d 14780 3.6 592 2.9 422

4th Dam

Durson Apollo Nellie EX-91 EEEV 4E GMD

10-11 2x 365d 27220 3.3 897
 Life: 3141d 186920 3.6 6677

5th Dam

Wawaco Startrek Nan VG-87 GMD

8-08 2x 365d 23150 3.3 774
 Life: 2941d 156566 3.6 5651

Hanoverhill Raider-ET

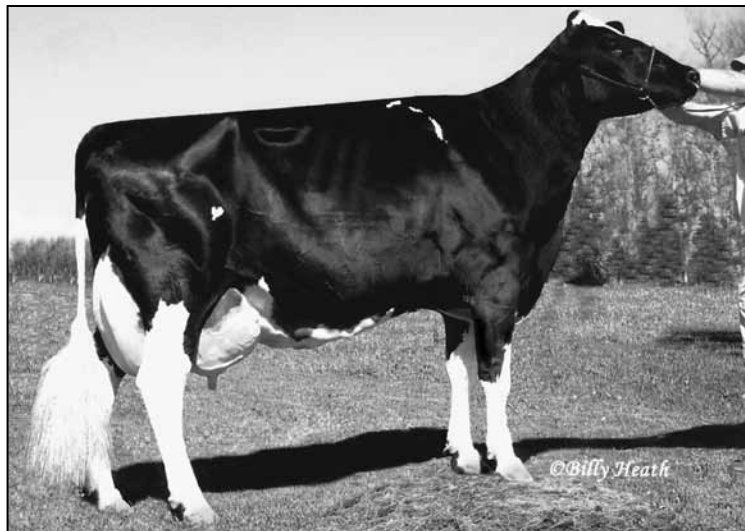
390409C EX-CAN EXTRA'91 *TV *TL
 PTA -1232M -30F -32P 99R 1/10
 PTA +.27T -.04UDC +.14FLC GTPI +1030G

Shan-Cole Valiant Nisa-ET

14688593 Excellent-93 EEEEE @ 3-10
 3-06 2x 266d 20550 3.5 724 3.0 618
 2-06 2x 310d 17010 4.1 705 3.3 555

• HHM All-American Sr 3-Yr-Old Cow 1995

• 1st Sr 3-Yr-Old Cow Eastern National 1995



SUNNY-HILLVUE RD CHARMED-ET EX-91 EX-MS
DAM OF LOT 470

LOT 468

SUNNY-HILLVUE ASTRONOM JADE

136875929 Good Plus-80 @ 4-01
Born: November 1, 2005
2-04 2x 365d 22820 3.4 782 3.2 731
3-07 2x 260d 16449 3.4 560 3.1 517 RIP
Milking 64 lbs/day

Bred: Feb. 16, 2010 to 36H0336

Oseeana Astronomical-ET

129355919 *TV *TL
PTA -903M -56F -25P 99R 1/10
PTA -2.5PL 3.09SCS -1.0DPR
PTA +1.54T +.28UDC +.97FLC 99R 1/10
GTPI +921G

Sunny-Hillvue Geno Jan

131195411 Good Plus-83 @ 3-08
2-11 2x 365d 26500 3.2 852 3.2 851
2-01 2x 269d 14740 3.2 467 3.2 466

3rd Dam

Four-Holes Ned Boy Jill VG-86 VVV
4-05 2x 365d 27610 4.5 1232 3.2 893

4th Dam

Four-Holes Jill Bobby-Twin VG-85
5-00 3x 317d 25640 4.9 1246 3.0 772
Life: 1918d 133520 4.3 5706 3.0 4036

Be-Ware Juror Geno

2283609 Very Good-87 GM 8/04 *TV *TL
PTA +338M -16F +1P 99R 1/10
PTA +.71T +.63UDC +.68FLC TPI +1342M

Sunny-Hillvue SW Jan

14282317 Very Good-87
4-05 2x 365d 26410 4.4 1152 3.2 649
1-11 2x 365d 23330 4.1 958 3.1 734
9-01 2x 359d 21690 4.4 947 3.0 645
Life: 2906d 189354 4.1 7815 3.1 5875

LOT 470

SUNNY-HILLVUE ASTRO CHARM

136875947 Very Good-86 VG-MS @ 4-01
Born: November 11, 2005
2-02 2x 352d 21020 3.1 657 3.0 629

Fresh: March 6, 2010

Oseeana Astronomical-ET

129355919 *TV *TL
PTA -903M -56F -25P 99R 1/10
PTA -2.5PL 3.09SCS -1.0DPR
PTA +1.54T +.28UDC +.97FLC 99R 1/10
GTPI +921G

Sunny-Hillvue RD Charmed-ET

131816615 Excellent-91 EX-MS
6-05 2x 365d 32750 3.1 999 2.9 962
5-03 2x 365d 26200 3.2 844 3.0 794
3-04 2x 292d 23600 2.2 518 3.2 747
4-03 2x 311d 22380 3.1 686 3.0 682
Life: 1841d 129610 2.9 3705 3.1 3978
Sells as Lot 231

3rd Dam

Knox-Hill Sexation Colette EX-93 2E DOM
6-00 2x 347d 30330 4.0 1204 3.0 980
Life: 1452d 104450 3.9 4035 3.0 1870

Regancrest Elton Durham-ET

2250783 Excellent-90 GM 8/01 *TR *CV *TL
PTA -273M -35F +6P 99R 1/10
PTA +2.35T +2.39UDC +2.03FLC GTPI +1550G

Sunny-Hillvue BS Colette-ET

14285923 Excellent-95 EEEEE 2E DOM
7-00 2x 365d 38240 3.7 1432 3.1 1168
4-09 2x 346d 34184 3.6 1225 3.2 1104
10-0 2x 365d 31420 4.0 1271 3.0 943
Life: 2669d 223044 3.7 8296 3.1 6887

• 2nd Aged Cow Eastern Fall/Nat 1996

Sunny-Hillvue Herd Dispersal



ERNEST-ANTHONY TYRA-ET EX-94 GMD DOM
MATERNAL SISTER TO DAM OF LOT 472

LOT 472

SUNNY-HILLVUE PRIME TART-ET

137267606 Good Plus-81 @ 4-00

Born: December 1, 2005

1-11 2x 365d 17010 4.8 817 3.3 568

3-07 2x 232d 14448 4.5 652 3.0 432 RIP

Milking 57 lbs/day 5.7%F

Bred: Sept. 8, 2009 to Sunny-Hillvue Jas Atom-ET
66738848

Windy-Knoll-View Primetype

129611183 *TL

PTA -2078M -44F -42P 99R 1/10

PTA +1.8PL 2.85SCS +0.8DPR

PTA +1.66T +1.35UDC +1.98FLC 98R 1/10

TPI +1268M

Ernest-Anthony Astr Tart-ET

15671857 Excellent-92 EEEEE

3-04 2x 365d 25140 4.3 1103 3.3 844

6-03 2x 365d 24930 4.7 1162 3.3 828

2-03 2x 349d 23110 4.7 1094 3.3 763

4-08 2x 365d 22390 4.8 1071 3.2 719

Life: 1637d 104550 4.6 4849 3.3 3469

3rd Dam

Alanvale Puget Anetia VG-85-CAN

12-0 2x 365d 23812 4.1 970 3.5 827

Life: 11 Lact 203901 4.2 8503 3.5 5600

Duregal Astre Starbuck-ET

392405C EX-CAN EXTRA'92 *TL

PTA -681M -59F -29P 99R 1/10

PTA +.15T +.41UDC +.35FLC GTPI +925G

C Alanvale Inspiration Tina

14395899 Excellent-95 EEEEE 2E GMD DOM

6-00 2x 365d 36010 5.1 1829 3.3 1184

7-06 2x 365d 35350 4.1 1441 3.4 1187

Life: 1503d 136010 4.5 6122 3.3 4555

• Res All-American Aged Cow 1995-1996

LOT 474

SUNNY-HILLVUE ROY DONNA

137266977 Good Plus-83 @ 4-00

Born: December 4, 2005

2-00 2x 312d 17030 4.7 807 3.0 516

2-11 2x 275d 16760 4.1 682 3.1 524

3-10 2x 136d 9950 5.1 503 3.1 312 RIP

Milking 72 lbs/day 5.1%F

Bred: Feb. 19, 2010 to Golden-Oaks St Alexander-ET

Roylane Jordan-ET

17064727 Excellent-95 GM 2/04 *TV *TL

PTA -297M -8F -12P 99R 1/10

PTA -1.9PL 3.09SCS +0.1DPR

PTA +1.99T +2.09UDC +.20FLC 99R 1/10

GTPI +1347G

Sunny-Hillvue Lotto Daido

134830180 Good-77 @ 2-08

3-00 2x 365d 22240 4.8 1066 3.3 744

2-01 2x 288d 17470 4.7 829 3.2 564

Ked Juror-ET

2124357 Good Plus-82 GM 2/01 *TV *TL

PTA -141M -10F -9P 99R 1/10

PTA +.79T +.95UDC -.97FLC GTPI +1270G

Firdell Aerostar Babette-ET

14504541 Excellent-90 VEVVE GMD DOM

3-02 2x 365d 41140 3.9 1542 3.0 1245

2-01 2x 344d 31570 3.8 1195 3.1 967

Altagen Lotto-ET

7175738C VG-85-CAN *TV *TL

PTA -881M +2F -19P 98R 1/10

PTA +.76T +.74UDC +1.21FLC TPI +1238M

Sunny-Hillvue Ice Dot

130925402 Good Plus-83 @ 3-02

1-11 2x 365d 20760 4.6 946 3.3 684

3-01 2x 327d 19680 4.5 880 3.3 651



SUNNY-HILLVUE LEE TWINKLE VG-88 EX-MS
DAM OF LOT 476

LOT 476

SUNNY-HILLVUE TWINKLETOES

137266986 Good Plus-81 VG-MS @ 2-03

Born: December 31, 2005

1-10 2x 280d 18310 4.0 729 3.0 546

2-09 2x 327d 17020 3.9 665 3.3 562

3-11 2x 99d 10279 4.2 429 2.8 292 RIP

Milking 91 lbs/day 4.2%F

Bred: Feb. 6, 2010 to Mr Regelcreek Shot AI-ET

Marcrest Encore

2048702 Excellent-96 GM 2/99 *TV *TL

PTA -931M -25F -27P 99R 1/10

PTA +1.02T +.81UDC -.26FLC GTPI +1007M

Snow-N Denises Dellia

12895802 Excellent-95 2E GMD DOM *TV *TL

6-00 2x 365d 35230 4.0 1425 3.0 1049

Life: 2558d 180240 3.9 7108 3.2 5723

Comestar Lee-ET

5757117C EX-CAN GM 8/03 *TV *TL

PTA -516M +20F -7P 99R 1/10

PTA +1.04T +.64UDC +1.01FLC GTPI +1378G

Sunny-Hillvue Trinket-ET

17283113 Very Good-87 VG-MS @ 3-03

3-07 2x 321d 19900 4.5 890 3.7 728

4-08 2x 294d 19830 4.6 913 3.4 678

2-05 2x 359d 19350 4.8 925 3.7 709

Regancrest Dundee-ET

127640114 Excellent-95 *TV *TL

PTA -419M -24F -8P 99R 1/10

PTA -2.0PL 3.04SCS -0.2DPR

PTA +2.13T +2.28UDC +.93FLC 99R 8/09

GTPI +1325G

Sunny-Hillvue Lee Twinkle

133516548 Very Good-88 EX-MS @ 3-09

4-04 2x 365d 28530 4.3 1236 3.2 922

3-03 2x 351d 24560 4.0 990 3.2 794

2-03 2x 303d 20840 3.8 797 3.3 691

3rd Dam

Ernest-Anthony Astr Tart-ET EX-92 EEEEE

3-04 2x 365d 25140 4.3 1103 3.3 844

Life: 1637d 104550 4.6 4849 3.3 3469

4th Dam

C Alanvale Inspiration Tina EX-95 2E GMD DOM

6-00 2x 365d 36010 5.1 1829 3.3 1184

Life: 1503d 136010 4.5 6122 3.3 4555

• Res All-American Aged Cow 1995-1996

• All-Canadian Jr 3-Yr-Old Cow 1993

• HM All-American Jr 2-Yr-Old Cow 1991

5th Dam

Alanvale Puget Anetia VG-85-CAN

12-0 2x 365d 23812 4.1 970 3.5 827

Life: 11 Lact 203901 4.2 8503 3.5 5600

LOT 477

SUNNY-HILLVUE EW ELLA

137266995 Good Plus-83 @ 3-11

Born: January 1, 2006

3-00 2x 357d 25552 3.6 911 3.1 783

2-00 2x 326d 20950 3.9 813 3.1 644

Dry

Bred: June 27, 2009 to Klassic Big Time-ET

Budjon-JK Eastwood-ET

134338156 Excellent-90 *TV *TL

PTA -397M -27F -19P 95R 1/10

PTA -1.9PL 3.02SCS -0.9DPR

PTA +1.52T +1.82UDC +.50FLC 90R 1/10

GTPI +1181G

Sunny-Hillvue Derry Edna

131195877 Good Plus-80

5-01 2x 365d 31060 3.2 990 2.8 865

3-10 2x 365d 29330 3.2 939 3.0 879

6-09 2x 365d 29150 3.4 896 2.9 842

2-04 2x 365d 27330 3.0 824 3.0 821

Life: 1770d 130970 3.3 4317 3.0 3877

3rd Dam

Sunny-Hillvue Mark Ella-ET GP-81

4-05 2x 365d 25650 3.3 851 2.8 731

4th Dam

Kimball-Farms Paclamar Eleanor EX-96 3E GMD

6-08 2x 365d 29100 3.7 1065

Life: 1725d 125260 3.4 4261

Regancrest Emory Derry-ET

2300873 Excellent-94 GM 8/02 *TV *TL

PTA -78M +17F -5P 99R 1/09

PTA +2.54T +2.17UDC +1.23FLC GTPI +1199M

Sunny-Hillvue HL Elaine-TW

15932326 Good-76 @ 4-05

4-10 2x 305d 21760 3.7 808 2.8 604

3-07 2x 365d 21520 3.8 819 2.9 626

2-06 2x 331d 17180 3.9 672 2.9 494

LOT 479

SUNNY-HILLVUE ASTRO RITZ

137267008 Good-78 @ 3-11

Born: January 30, 2006

2-04 2x 313d 18810 3.2 606 3.0 573

3-05 2x 226d 17804 3.8 684 2.9 519 RIP

Milking 65 lbs/day

Bred: Jan. 27, 2010 to BVK Durham Duty-ET

Oseeana Astronomical-ET

129355919 *TV *TL

PTA -903M -56F -25P 99R 1/10

PTA -2.5PL 3.09SCS -1.0DPR

PTA +1.54T +.28UDC +.97FLC 99R 1/10

GTPI +921G

Sunny-Hillvue Cost Rhonda

131195895 Very Good-85 VG-MS @ 3-10

6-06 2x 348d 27830 4.1 1130 2.9 798

3-08 2x 365d 27170 3.4 926 2.9 790

5-00 2x 365d 27180 3.2 876 2.8 759

7-07 2x 365d 27520 3.1 754 2.9 713

Life: 2145d 139510 3.5 4886 2.9 4073

3rd Dam

Sunny-Hillvue BC Rhoda-TW VG-85 VG-MS

3-11 2x 365d 27760 3,3 905 2.9 796

4th Dam

C Kostaholme Roland Ronda EX-90 EX-MS

7-10 2x 365d 27710 3.1 871 2.9 799

Life: 2793d 178171 3.3 5853 2.9 5231

Silky Cousteau-ET

6215489C EX-CAN ST'99 *TV *TL

PTA -550M +3F -29P 99R 1/10

PTA +.94T +1.29UDC -.57FLC GTPI +1053G

Sunny-Hillvue Ruby

123401854 Very Good-85 VG-MS @ 3-07

4-00 2x 365d 30320 3.6 1080 2.8 841

3-00 2x 307d 24160 3.2 773 2.9 691

2-01 2x 290d 17800 3.4 612 2.7 485

LOT 484

SUNNY-HILLVUE BLITZ COLETTE

137267044 Good-78 @ 3-09

Born: March 1, 2006

1-11 2x 365d 23040 3.4 787 3.0 683

3-02 2x 305d 22747 3.4 769 2.8 638 RIP

Milking 76 lbs/day

Bred: Jan. 1, 2010 to Mansion-Valley Delaware

Fustead Emory Blitz-ET

17013604 Excellent-94 GM 2/05 *TV *TL

PTA +1948M +18F +10P 99R 1/10

PTA +0.4PL 3.05SCS -3.0DPR

PTA +1.46T +1.42UDC +.92FLC 99R 1/10

GTPI +1452G

Sunny-Hillvue Rubns Colette

133516481 Good-78 @ 2-08

4-10 2x 365d 28740 3.7 1077 3.3 935

3-06 2x 365d 25750 3.7 950 3.2 823

2-03 2x 365d 25220 3.7 943 3.0 762

3rd Dam

Sunny-Hillvue BS Colette-ET EX-95 2E DOM

7-00 2x 365d 38240 3.7 1432 3.1 1168

Life: 2669d 223044 3.7 8296 3.1 6887

• 2nd Aged Cow Eastern Fall/Nat 1996

4th Dam

Knox-Hill Sexation Colette EX-93 2E DOM

6-00 2x 347d 30330 4.0 1204 3.0 980

Life: 1452d 104450 3.9 4035 3.0 1870

STBVQ Rubens-ET

5844883C VG-CAN GM 8/04 *RC *TV *TL

PTA -568M -19F -1P 99R 1/10

PTA +1.20T +2.08UDC +.15FLC GTPI +1378G

Sunny-Hillvue TL Colette-ET

15932279 Very Good-85 VG-MS @ 4-05

5-06 2x 365d 28550 3.6 1037 3.0 869

4-01 2x 365d 26730 4.2 1130 3.1 828



SUNNY-HILLVUE ASTROJET PETTLES EX-94 4E
6TH DAM OF LOT 486

LOT 486

Roylane Jordan-ET

17064727 Excellent-95 GM 2/04 *TV *TL
PTA -297M -8F -12P 99R 1/10
PTA -1.9PL 3.09SCS +0.1DPR
PTA +1.99T +2.09UDC +.20FLC 99R 1/10
GTPI +1347G

Sunny-Hillvue OS Petals

135299489 Very Good-85 VG-MS @ 3-05
2-11 2x 312d 21810 3.8 825 3.0 651
2-00 2x 288d 17180 4.4 752 3.0 508

SUNNY-HILLVUE ROY PETALS

137267053 Very Good-85 VG-MS @ 3-09
Born: March 2, 2006
2-03 2x 354d 17450 3.4 596 2.9 509
3-04 2x 250d 16416 3.7 613 3.0 485 RIP
Milking 56 lbs/day

Bred: Dec. 6, 2009 to Maple-Downs-I G W Atwood-ET

Ked Juror-ET

2124357 Good Plus-82 GM 2/01 *TV *TL
PTA -141M -10F -9P 99R 1/10
PTA +.79T +.95UDC -.97FLC GTPI +1270G

Firdell Aerostar Babette-ET

14504541 Excellent-90 VEVVE GMD DOM
3-02 2x 365d 41140 3.9 1542 3.0 1245
2-01 2x 344d 31570 3.8 1195 3.1 967

Comestar Outside-ET

6026421C EX-CAN EXTRA'98 GM *TV *TL
PTA +280M +36F -4P 99R 1/10
PTA +1.28T +1.13UDC +1.63FLC GTPI +1742G

Sunny-Hillvue Exh Plum

131813939 Excellent-92 EEEEE
4-11 2x 355d 26780 3.9 1032 3.3 894
2-05 2x 289d 22050 3.3 737 3.4 742
3-04 2x 293d 18720 3.5 656 3.3 622

4th Dam

Sunny-Hillvue Astre Pebbles VG-88 DOM

2-07 2x 365d 31570 3.8 1207 3.1 989
Life: 1607d 125570 3.9 4951 3.1 3895

5th Dam

Sunny-Hillvue Nick Plum VG-85

4-06 2x 338d 27870 4.0 1102 2.9 820

6th Dam

Sunny-Hillvue Astrojet Pettles EX-94 4E

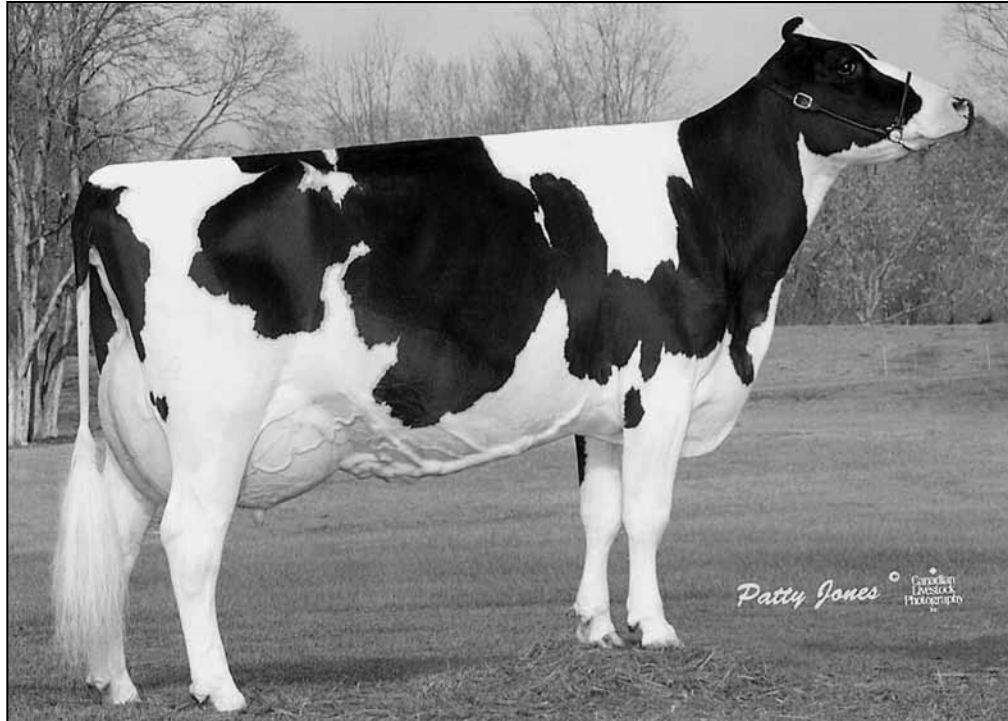
7-03 2x 365d 32530 4.4 1427 2.9 958
Life: 3165d 208540 4.4 9155 3.1 6374

Budjon-JK Encore Exhibit-ET

125791289 Excellent-91 *TV *TL
PTA -1612M -47F -36P 99R 1/10
PTA +.91T +.83UDC +.16FLC GTPI +850G

Sunny-Hillvue Jolt Petals

121012869 Very Good-86 VG-MS @ 2-11
3-00 2x 365d 22740 4.0 918 3.3 740
4-02 2x 322d 21560 4.2 904 3.0 654
2-01 2x 291d 17750 4.2 754 3.1 553



ERNEST-ANTHONY SD TOBI-ET EX-96 EEEEE 3E DOM
MATERNAL SISTER TO 2ND DAM OF LOT 488

LOT 488

SUNNY-HILLVUE ROY TIFFY

137656341 Very Good-85 VG-MS @ 3-09
 Born: March 30, 2006
 2-08 2x 336d 25270 3.3 840 3.0 758
 3-09 2x 48d 3607 3.7 132 3.3 118 RIP
 Milking 91 lbs/day
 Bred: March 1, 2010 to Pine-Tree Spearmint-ET

Ked Juror-ET

2124357 Good Plus-82 GM 2/01 *TV *TL
 PTA -141M -10F -9P 99R 1/10
 PTA +.79T +.95UDC -.97FLC GTPI +1270G

Firdell Aerostar Babette-ET

14504541 Excellent-90 VEVVE GMD DOM
 3-02 2x 365d 41140 3.9 1542 3.0 1245
 2-01 2x 344d 31570 3.8 1195 3.1 967

Regancrest Elton Durham-ET

2250783 Excellent-90 GM 8/01 *TR *CV *TL
 PTA -273M -35F +6P 99R 1/10
 PTA +2.35T +2.39UDC +2.03FLC GTPI +1550G

Ernest-Anthony Astr Tart-ET

15671857 Excellent-92 EVEEE
 3-04 2x 365d 25140 4.3 1103 3.3 844
 6-03 2x 365d 24930 4.7 1162 3.3 828
 2-03 2x 349d 23110 4.7 1094 3.3 763
 4-08 2x 365d 22390 4.8 1071 3.2 719
 Life: 1637d 104550 4.6 4849 3.3 3469

TOBI!

Ernest-Anthony SD Tobii-ET EX-96 EEEEE 3E DOM

6-00 2x 365d 44090 5.0 2191 3.2 1423
 Life: 1321d 116303 5.3 6141 3.5 4056

- Res All-World 2001 by Holstein International
- All-Canadian 5-Yr-Old Cow 2001
- Res All-American 5-Yr-Old Cow 2001
- HM All-American 125,000 lb. Cow 2004

3rd Dam

Alanvale Puget Anetia VG-85-CAN

12-0 2x 365d 23812 4.1 970 3.5 827
 Life: 11 Lact 203901 4.2 8503 3.5 5600

Roylane Jordan-ET

17064727 Excellent-95 GM 2/04 *TV *TL
 PTA -297M -8F -12P 99R 1/10
 PTA -1.9PL 3.09SCS +0.1DPR
 PTA +1.99T +2.09UDC +.20FLC 99R 1/10
 GTPI +1347G

Sunny-Hillvue RD Tarryn-ET

134865766 Good-77 @ 2-06
 2-03 2x 353d 19280 3.5 684 3.1 599

Duregal Astre Starbuck-ET

392405C EX-CAN EXTRA'92 *TL
 PTA -681M -59F -29P 99R 1/10
 PTA +.15T +.41UDC +.35FLC GTPI +925G

C Alanvale Inspiration Tina

14395899 Excellent-95 EEEEE 2E GMD DOM
 6-00 2x 365d 36010 5.1 1829 3.3 1184
 7-06 2x 365d 35350 4.1 1441 3.4 1187
 Life: 1503d 136010 4.5 6122 3.3 4555
 • Res All-American Aged Cow 1995-1996

LOT 490

SUNNY-HILLVUE K COLETTE-RED

137682526 Good Plus-83 @ 3-08

Born: April 16, 2006

1-11 2x 305d 17410 4.0 700 3.2 549

2-11 2x 312d 17321 4.2 726 3.0 518

Dry

Bred: July 9, 2009 to Rosedale Accolade-Red-ET

Donnandale Skychief-ET

391661C EX-CAN GM 2/01 *TL

PTA -341M -14F -11P 99R 1/10

PTA +1.06T +.98UDC -.98FLC GPI +1378M

Stookey Elm Park Blackrose-ET

14085789 Excellent-96 3E GMD DOM

5-03 3x 365d 42230 4.6 1939 3.4 1432

• All-American & All-Canadian Jr 3-Yr-Old 1993

STBVQ Rubens-ET

5844883C VG-CAN GM 8/04 *RC *TV *TL

PTA -568M -19F -1P 99R 1/10

PTA +1.20T +2.08UDC +.15FLC GPI +1378G

Sunny-Hillvue SM Colette-ET

127353180 Good Plus-80 @ 4-11

4-02 2x 305d 20400 4.1 834 3.1 635

5-03 2x 275d 18220 4.8 881 3.3 605

3-02 2x 257d 17000 4.7 802 3.3 566

Full sister to Colette

Sunny-Hillvue S Colette-ET VG-86 VVVVV

5-09 2x 365d 31100 3.5 1101 2.8 857

Markwell Kite-ET

128460878 EX-CAN *RC *TV *TL

PTA -1269M -27F -40P 99R 1/10

PTA -4.4PL 3.14SCS -1.9DPR

PTA +1.97T +1.28UDC -.33FLC 99R 1/10

GTPI +853G

Sunny-Hillvue R Colette-Red

133974740 Very Good-85 VG-MS @ 2-03

4th Dam

Knox-Hill Sexation Colette EX-93 2E DOM

6-00 2x 347d 30330 4.0 1204 3.0 980

Life: 1452d 104450 3.9 4035 3.0 1870

Maughlin Storm-ET

5457798 EX-CAN GM 8/04 *B/R *TV *TL

PTA -73M +26F -4P 99R 1/10

PTA +.96T +.85UDC +1.36FLC GPI +1425G

Sunny-Hillvue BS Colette-ET

14285923 Excellent-95 EEEEE 2E DOM

7-00 2x 365d 38240 3.7 1432 3.1 1168

4-09 2x 346d 34184 3.6 1225 3.2 1104

10-0 2x 365d 31420 4.0 1271 3.0 943

Life: 2669d 223044 3.7 8296 3.1 6887

• 2nd Aged Cow Eastern Fall/Nat 1996

LOT 491

SUNNY-HILLVUE BLITZ FIRE

137656378 Good Plus-82 @ 3-07

Born: May 17, 2006

2-01 2x 337d 16170 4.3 693 3.5 568

3-03 2x 204d 11793 4.6 538 3.2 380 RIP

Milking 40 lbs/day

Bred: Nov. 5, 2009 to Mr Atlees Sht Aftershock-ET

MJR Blackstar Emory-ET

2114601 Excellent-97 GM 2/00 *TV *TL

PTA +169M -27F -11P 99R 1/10

PTA +.83T +.82UDC +1.08FLC GPI +1215G

Fustead Tesk Bev

14947858 Excellent-90 EX-MS GMD DOM *TL

5-07 2x 365d 45810 3.5 1595 2.9 1311

Life: 1673d 136460 3.7 5107 3.1 4283

Calbrett-I H H Champion-ET

6961162 EX-CAN GM 2/07 *TV *TL

PTA +1055M +21F +22P 99R 1/10

PTA +1.20T +.47UDC -.12FLC GPI +1543G

HM-NV Exhibit Flair-ET

132645973 Very Good-85 @ 3-03

2-04 2x 365d 24110 3.7 898 3.3 802

Fustead Emory Blitz-ET

17013604 Excellent-94 GM 2/05 *TV *TL

PTA +1948M +18F +10P 99R 1/10

PTA +0.4PL 3.05SCS -3.0DPR

PTA +1.46T +1.42UDC +.92FLC 99R 1/10

GTPI +1452G

HM-NV Champion Fire

135552007 Good Plus-81 @ 3-05

2-02 2x 365d 22520 4.5 1011 3.3 733

3rd Dam

HM-NV Juror Fancy-ET VG-88 EX-MS

6-00 2x 365d 34480 3.3 1140 3.1 1066

Life: 2498d 187340 3.4 6353 3.2 5973

4th Dam

HM-NV Target Pretzel-ET EX-90 2E GMD DOM

3-08 2x 365d 33150 3.7 1215 3.0 990

Life: 1797d 117960 3.5 4071 3.0 3568

5th Dam

Hillmont Enhancer Peach EX-90 2E GMD DOM

5-04 2x 365d 28640 4.3 1244 3.3 936

Life: 1989d 122850 4.3 5255 3.2 3952

6th Dam

Hillmont Bova Pearl-ET EX-90 2E GMD DOM

5-11 2x 365d 28060 3.7 1028 2.8 793

Life: 11702d 112310 3.7 4106 2.9 3283

7th Dam

Hillmont Glendell Pinky EX-90 GMD DOM

8-08 2x 365d 28210 4.5 1257 3.4 971

8th Dam

Luth-R-Le Gay Precious EX-90 4E GMD DOM

9-08 2x 365d 24040 4.5 1087

Life: 2993d 194600 4.5 8761

LOT 492

SUNNY-HILLVUE RBN CHIKYBABY

137656387 Very Good-85 VG-MS @ 3-07
Born: May 18, 2006
1-11 2x 365d 22550 3.9 879 3.0 687
3-04 2x 151d 11956 4.1 494 3.0 354 RIP
Milking 89 lbs/day

Bred: Jan. 12, 2010 to Klassic Big Time-ET

STBVQ Rubens-ET

5844883C VG-CAN GM 8/04 *RC *TV *TL
PTA -568M -19F -1P 99R 1/10
PTA +0.5PL 2.97SCS -1.1DPR
PTA +1.20T +2.08UDC +.15FLC 99R 1/10
GTPI +1378G

Sunny-Hillvue Exsp Chicky

135298871 Good Plus-80
3-01 2x 365d 27630 4.3 1184 3.1 843
4-04 2x 303d 22550 3.8 847 3.0 673
2-01 2x 286d 19040 3.9 741 2.9 546
5-05 2x 188d 15090 4.0 611 2.9 442 RIP
Sells as Lot 384

Duregal Astre Starbuck-ET

392405C EX-CAN EXTRA'92 *TL
PTA -681M -59F -29P 99R 1/10
PTA +.15T +.41UDC +.35FLC GTPI +925G

Hanoverhill Star Royal-ET

43235412C VG-86-3YR-CAN *4 STAR
3-00 2x 350d 21718 3.8 836 3.6 787
2-00 2x 315d 19592 3.6 710 3.5 686

Ocean-View Extra Special-ET

131410819 Very Good-87 *TV *TL
PTA -1570M -36F -41P 99R 1/10
PTA +.14T +.40UDC +.77FLC TPI +1461

Sunny-Hillvue RM Charly

132193319 Good Plus-82 @ 2-11
5-01 2x 365d 24800 3.7 908 2.8 692
4-01 2x 300d 22300 3.7 820 2.8 614
2-03 2x 305d 20330 3.8 772 2.8 569

4th Dam

Sunny-Hillvue Enc Charolette GP-82
3-01 2x 276d 20610 4.5 920 3.0 625

Indianhead Red-Marker-ET

2284915 EX-CAN *RC *TV *TL
PTA -1727M -61F -69P 99R 1/10
PTA +1.49T +.93UDC +.30FLC GTPI +782G

Sunny-Hillvue Durh Charlete

128709993 Veru Good-85 @ 3-11
3-00 2x 305d 24530 3.5 849 3.0 727
2-00 2x 283d 20860 3.6 754 2.8 593

LOT 494

SUNNY-HILLVUE RBN PRISELLA

137656417 Very Good-85 VG-MS @ 3-06
Born: June 4, 2006
2-02 2x 288d 19150 2.8 544 3.2 619
3-02 2x 189d 13971 3.4 479 3.1 432 RIP
Milking 69 lbs/day

Bred: Jan. 13, 2010 to Scientific SS Dusk-ET

Duregal Astre Starbuck-ET

392405C EX-CAN EXTRA'92 *TL
PTA -681M -59F -29P 99R 1/10
PTA +.15T +.41UDC +.35FLC GTPI +925G

Hanoverhill Star Royal-ET

43235412C VG-86-3YR-CAN *4 STAR
3-00 2x 350d 21718 3.8 836 3.6 787
2-00 2x 315d 19592 3.6 710 3.5 686

Parker Aero Wade-ET

2182318 Good-79 GM 11/00 *TV *TL
PTA -289M -17F -2P 99R 1/10
PTA +.38T +1.38UDC +.85FLC GTPI +1357G

Maview Promise Performer

17169871 Excellent-90 EVEVE 2E
3-05 2x 341d 29410 3.5 1035 3.0 868
5-11 3x 305d 27960 3.0 841 2.8 783
4-06 3x 305d 27000 3.1 824 2.8 745
7-02 2x 305d 21410 3.2 677 2.9 629
Life: 1403d 112570 3.2 3633 2.9 3242

4th Dam

Maview Promise Enterprise EX-91 GMD DOM
6-03 3x 365d 32780 3.2 1046 2.6 850
Life: 3056d 230350 3.1 7079 2.7 6225

5th Dam

Maview Precious Bootmaker EX-90 3E GMD
8-02 3x 365d 27250 3.7 1007 3.0 820
Life: 4243d 273770 3.5 9656 2.9 5877

6th Dam

Maview Purity Rockman EX-90 EEEV
6-11 2x 327d 27450 3.9 1071
Life: 2228d 149350 3.9 5879

STBVQ Rubens-ET

5844883C VG-CAN GM 8/04 *RC *TV *TL
PTA -568M -19F -1P 99R 1/10
PTA +0.5PL 2.97SCS -1.1DPR
PTA +1.20T +2.08UDC +.15FLC 99R 1/10
GTPI +1378G

Lucky-Buttke Wade Prissie

131161966 Good-78 @ 3-09
6-05 2x 318d 22550 3.9 882 3.2 722
5-03 2x 351d 21720 3.7 799 3.1 676
3-05 2x 269d 18840 3.9 741 3.2 594
2-06 2x 295d 18390 3.4 625 3.1 575
4-04 2x 275d 18250 3.4 625 3.0 546
Life: 1559d 103010 3.7 3794 3.1 3214

Merit Performer-ET

2235524 VG-86-CAN *TV *TL
PTA -834M +8F -13P 99R 1/10
PTA -.68T -.49UDC +.15FLC TPI +1050M

Maview Promise Simon

12527864 Excellent-91 EEEV 3E
7-05 3x 365d 29760 3.2 950 2.5 749
4-03 3x 364d 27070 3.3 906 2.6 706
2-02 3x 365d 25760 3.3 843 2.6 677
8-08 2x 305d 25500 3.3 842 2.5 628
Life: 2633d 198420 3.2 6367 2.6 5122

LOT 495

SUNNY-HILLVUE RUDY WILLOW

137656426 Good Plus-81
 Born: June 21, 2006
 2-03 2x 248d 12730 4.0 513 3.4 431
 3-02 2x 179d 12124 4.0 480 3.4 410 RIP
 Milking 61 lbs/day

Bred: Feb. 8, 2010 to Mr Regelcreek Shot AI-ET

Maternal sister to Lot 230

Regancrest Elton Durham-ET

2250783 Excellent-90 GM 8/01 *TR *CV *TL
 PTA -273M -35F +6P 99R 1/10
 PTA +2.35T +2.39UDC +2.03FLC GTPI +1550G

Nunesdale Rudolph Neomi-ET

18043804 Very Good-86 VG-MS DOM
 2-07 2x 365d 29000 3.7 1077 3.2 932
 5-06 2x 298d 20880 3.7 796 3.3 690

Ladys-Manor Winchester-ET

2205082 Excellent-95 GM 2/01 *TV *TL
 PTA +827M +31F +15P 99R 1/10
 PTA -.97T -.62UDC -1.54FLC GTPI +1183G

Dixie-Lee Angela-ET

17172183 Excellent-90 VEEV 2E
 3-02 2x 342d 27070 3.4 909 3.3 893
 2-00 2x 365d 26220 3.4 882 3.3 857
 6-01 3x 224d 22720 3.3 743 3.2 720

Nunesdale Durham Rudy-ET

60073805 GM 8/08 *TV *TL
 PTA -525M -18F +7P 99R 1/10
 PTA +2.3PL 2.61SCS +2.8DPR
 PTA +1.38T +1.89UDC +.68FLC 99R 1/10
 GTPI +1724G

Dixie-Lee Win Whitley-ET

128343225 Good Plus-83 VG-MS @ 2-09
 4-05 2x 365d 28540 3.3 938 2.8 797
 2-01 2x 365d 28060 3.4 952 2.9 825
 5-07 2x 333d 25500 3.0 758 2.7 698
 7-00 2x 336d 22640 3.6 817 2.7 619
 Life: 1537d 109710 3.3 3636 2.8 3098

3rd Dam

Dixie-Lee Aspen-ET EX-92 EEEEE GMD DOM
 6-01 2x 365d 31520 3.8 1193 3.4 1057

4th Dam

Patrick-Orchard MW Abbie-ET EX-93 2E GMD
 4-08 2x 365d 35920 4.1 1457 3.3 1188

5th Dam

Lylehaven Mark Abbie-ET VG-86 GMD DOM
 3-09 2x 365d 31120 3.6 1116 2.9 898

6th Dam

Yarsons Apollo Havn Amber-ET VG-86 GMD DOM
 3-04 2x 365d 29839 3.9 1171 3.5 1032

7th Dam

Suelawn Apollo Lee EX-90 GMD DOM
 9-00 2x 365d 26480 4.9 1286

Life: 2741d 161390 4.6 7404

8th Dam

F-G-P Osborndale Dean Lul Lu EX-91 3E GMD
 10-2 2x 365d 19890 4.4 892

Life: 3055d 158380 4.5 7124

9th Dam

FGP Osborndale Emperor Lucy EX-90 2E GMD
 10-9 2x 365d 20200 4.0 807

Life: 3170d 150007 4.1 6124

10th Dam

Sumco Emperor Shirley VG-85
 8-11 2x 365d 20041 3.9 786

Life: 2340d 112825 3.8 4314

LOT 498

SUNNY-HILLVUE DANTE CORALEE

137656462 Very Good-86 VG-MS @ 3-06
 Born: June 28, 2006
 CTPI +1625
 2-02 2x 286d 21530 3.3 714 3.0 656
 3-02 2x 182d 16762 4.0 674 3.0 503 RIP
 Milking 76 lbs/day

Bred: Nov. 24, 2009 to Oseeana Astronomical-ET

528 Etazon Lord Lily-ET

17036332 GM 2/01 *CV *TL
 PTA -97M +21F +7P 99R 1/10
 PTA -.14T +.01UDC -.05FLC GTPI +1401G

Langs-twin-Elm Holi Lady-ET

14846100 Very Good-86 VG-MS GMD DOM
 2-03 2x 365d 30730 3.8 1183 3.2 977

Garjo Mtoto Galex-ET

50453325 Very Good-87 *TV *TL
 PTA -253M +20F -12P 90R 1/10
 PTA +.66T +1.24UDC +1.14FLC GTPI +1611G

Sunny-Hillvue Rick Carol

121012328 Good Plus-82 @ 2-07
 4-03 2x 365d 29560 3.9 1162 2.9 868
 3-02 2x 343d 27440 3.5 950 3.0 823
 2-02 2x 335d 21590 3.4 744 2.8 609

Lang-Norrbom Lord Dante-ET

17381486 Very Good-85 *TV *TL
 PTA +65M +4F -2P 99R 1/10
 PTA -1.2PL 3.00SCS +0.3DPR
 PTR A +.27T +.35UDC +.36FLC 99R 1/10
 TPI +1283M

Sunny-Hillvue Carolin

132710716 Good Plus-82 VG-MS @ 4-11
 3-01 2x 365d 28240 3.6 1025 3.0 853
 6-03 2x 301d 20800 3.6 748 3.0 633
 4-04 2x 293d 20760 3.7 764 3.0 613
 5-04 2x 292d 20220 3.6 736 3.0 616
 2-02 2x 290d 19020 4.0 757 2.9 558
 Life: 1571d 110250 3.7 4098 3.0 3318
Sells as Lot 275

4th Dam

Sunny-Hillvue Columbus Carol VG-85
 4-02 2x 340d 23300 3.6 829 2.8 652
 Life: 1986d 133080 3.4 4485 2.8 3755

5th Dam

Sunny-Hillvue Bell Casie GP-82
 2-03 2x 305d 14170 3.5 498

6th Dam

Sunny-Hillvue RORAE Carolyn VG-88 VEEV DOM
 5-05 2x 324d 27100 3.2 867 2.9 774
 Life: 2758d 190680 3.6 6910 3.0 3655

Rickland Laban Projector

2127399 Good-77 GM 2/00 *TL
 PTA +76M +16F +6P 99R 1/10
 PTA -.81T -.64UDC -.39FLC GTPI +1147G

Sunny-Hillvue Roebuck Carol

15119932 Good-75 @ 4-08
 3-05 2x 303d 17280 3.9 681 3.0 516
 2-05 2x 328d 14350 4.3 618 3.1 446

LOT 500

SUNNY-HILLVUE SATRN COLETTE

137656471 Good Plus-80 VG-MS @ 3-05
 Born: July 9, 2006
 2-01 2x 298d 18040 3.2 574 2.9 531
 3-01 2x 200d 14033 3.7 523 2.9 413 RIP
 Milking 67 lbs/day

Bred: Feb. 14, 2010 to Scientific SS Dusk-ET

Roylane Jordan-ET

17064727 Excellent-95 GM 2/04 *TV *TL
 PTA -297M -8F -12P 99R 1/10
 PTA +1.99T +2.09UDC +.20FLC GTPI +1347G

Ocean-View Outside Sheen-ET

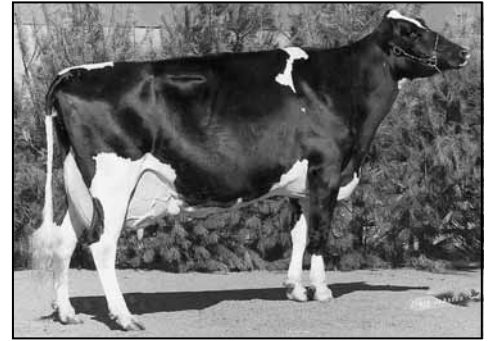
131410761 Excellent-91 EEEVE GMD DOM
 5-09 2x 365d 45000 3.5 1593 2.9 1289
 Life: 1825d 165670 3.7 6146 3.1 5125

Maughlin Storm-ET

5457798 EX-CAN GM 8/04 *B/R *TV *TL
 PTA -73M +26F -4P 99R 1/10
 PTA +.96T +.85UDC +1.36FLC GTPI +1425G

Sunny-Hillvue BS Colette-ET

14285923 Excellent-95 EEEEE 2E DOM
 7-00 2x 365d 38240 3.7 1432 3.1 1168
 4-09 2x 346d 34184 3.6 1225 3.2 1104
 10-0 2x 365d 31420 4.0 1271 3.0 943
 Life: 2669d 223044 3.7 8296 3.1 6887
 • 2nd Aged Cow Eastern Fall/Nat 1996



SUNNY-HILLVUE BS COLETTE-ET EX-95 2E DOM
 2ND DAM OF LOT 500

Ocean-View Roy Saturn-ET

135446591 *TV *TL
 PTA +426M -2F +2P 92R 1/10
 PTA -1.7PL 2.96SCS -0.9DPR
 PTA +.25T -.08UDC -.12FLC 88R 1/10
 GTPI +1219G

Sunny-Hillvue S Colette-ET

128161751 Very Good-86 VVVVV @ 4-08
 5-09 2x 365d 31100 3.5 1101 2.8 857
 4-06 2x 365d 30540 3.4 1029 2.8 864
 3-02 2x 365d 28970 4.0 1150 3.0 859
 2-00 2x 353d 23030 3.9 895 2.9 669
 Life: 1902d 138980 3.7 5188 2.9 4006

To-Mar Blackstar-ET

1929410 Excellent-93 GM 1/96 *TV *TL
 PTA -609M -24F -19P 99R 1/10
 PTA -.18T -.41UDC -.48FLC GTPI +1138G

Knox-Hill Sexation Colette

11072766 Excellent-93 EEEE 2E DOM
 6-00 2x 347d 30330 4.0 1204 3.0 980
 4-04 2x 305d 26180 3.9 1027 2.9 754
 3-03 2x 351d 24860 3.7 909
 Life: 1452d 104450 3.9 4035 3.0 1870

LOT 501

SUNNY-HILLVUE RLJ DORION

137656480 Very Good-85 VG-MS @ 3-05
 Born: July 19, 2006
 2-01 2x 326d 20190 3.7 754 3.3 660
 3-01 2x 181d 12526 4.1 517 3.3 408 RIP
 Milking 70 lbs/day 4.6%F

Bred: Feb. 11, 2010 to Wilcoxview Jasper-ET

Ked Juror-ET

2124357 Good Plus-82 GM 2/01 *TV *TL
 PTA -141M -10F -9P 99R 1/10
 PTA +.79T +.95UDC -.97FLC GTPI +1270G

Firdell Aerostar Babette-ET

14504541 Excellent-90 VEVVE GMD DOM
 3-02 2x 365d 41140 3.9 1542 3.0 1245
 2-01 2x 344d 31570 3.8 1195 3.1 967

Regancrest Elton Durham-ET

2250783 Excellent-90 GM 8/01 *TR *CV *TL
 PTA -273M -35F +6P 99R 1/10
 PTA +2.35T +2.39UDC +2.03FLC GTPI +1550G

Sunny-Hillvue Lin Dorion-ET

15900290 Very Good-85 VG-MS
 5-07 2x 301d 23860 3.4 800 3.1 740
 6-07 2x 259d 18710 3.5 652 3.1 580
 2-03 2x 299d 17800 4.0 704 3.2 577
 3-03 2x 306d 17670 4.0 701 3.4 602

Roylane Jordan-ET

17064727 Excellent-95 GM 2/04 *TV *TL
 PTA -297M -8F -12P 99R 1/10
 PTA -1.9PL 3.09SCS +0.1DPR
 PTA +1.99T +2.09UDC +.20FLC 99R 1/10
 GTPI +1347G

Sunny-Hillvue Drham Dorion

132193300 Good Plus-82 @ 3-11
 3-05 2x 350d 22230 3.6 802 3.2 702
 2-06 2x 280d 15840 3.9 613 3.2 504

4th Dam

Wakefield Starlet Dora VG-86 VG-MS-CAN
 4-03 2x 287d 14725 3.2 467

5th Dam

Wakefield Royal Dora GP-CAN
 3-04 2x 318d 16993 4.0 675

6th Dam

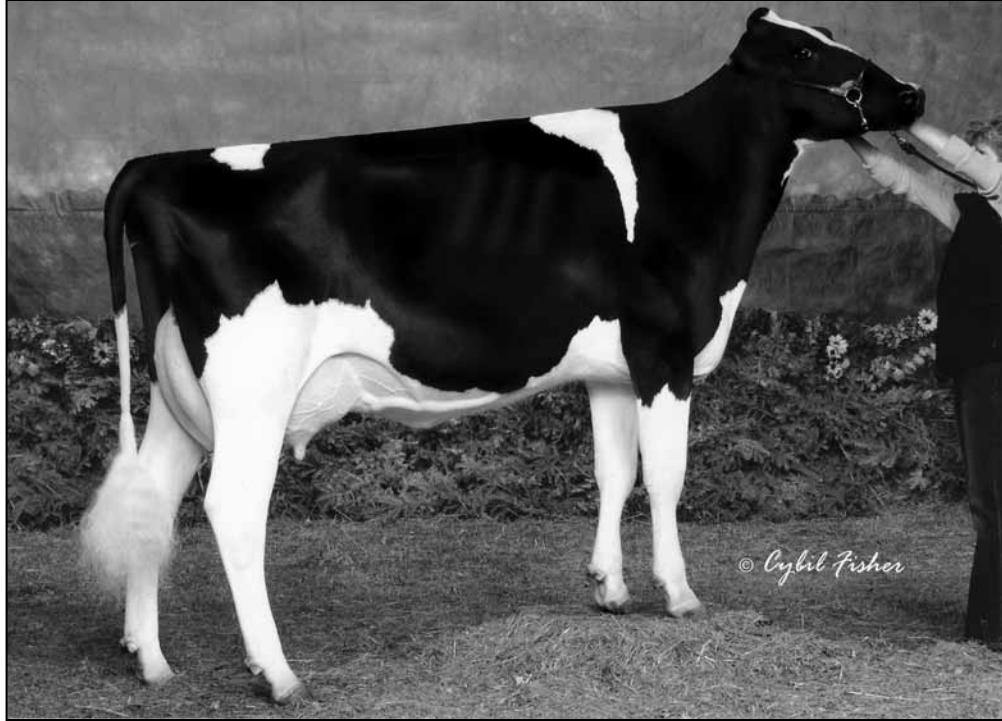
Wraymar Royal Dora VG-85 VG-MS-CAN
 6-10 2x 337d 18303 3.3 602

Sunnylodge Linjet

5578386C EX-CAN ST*97 *TV *TL
 PTA -1696M -28F -38P 99R 1/10
 PTA +1.65T +1.70UDC +1.03FLC TPI +1281M

C Wakefield Princess Dorion

12796401 Excellent-94 EEEEE 3E
 10-4 2x 348d 24520 3.7 895 3.0 731
 9-00 2x 365d 22640 3.8 851 3.2 717
 5-04 2x 305d 22120 3.8 834 3.3 728
 Life: 2722d 153425 3.8 5853 3.2 4886



RON-ROU LEDUC KAYLA-TW VG-89 EEVVE
HM All-American Jr 2-Yr-Old Cow 2004
MATERNAL SISTER TO DAM OF LOT 503

LOT 503

Roylane Jordan-ET

17064727 Excellent-95 GM 2/04 *TV *TL
 PTA -297M -8F -12P 99R 1/10
 PTA -1.9PL 3.09SCS +0.1DPR
 PTA +1.99T +2.09UDC +.20FLC 99R 1/10
 GTPI +1347G

Ron-Rou Durham Kara-ET

51726664 Very Good-87 VG-MS @ 3-09
 3-00 2x 365d 28830 3.7 1062 32 932
 2-01 2x 282d 16400 3.8 630 3.2 529

Maternal sister to Kara

Ron-Rou Leduc Kayla-TW VG-89 EEVVE @ 2-05

2-02 2x 305d 26880 4.7 1268 3.2 860

- *HM All-American Jr 2-Yr-Old Cow 2004*
- *1st Jr 2-Yr-Old Cow Maryland State Fair 2004*
- *5th Jr 2-Yr-Old Cow International Show 2004*
- *Jr Champion Southern Sprng/Nat 2003*

RON-ROU ROY KARA

13762544 Good Plus-83 @ 3-05
 Born: July 23, 2006
 3-08 2x 280d 16920 4.2 716 2.9 488
 1-10 2x 271d 13970 3.4 478 3.1 432
 Dry

Bred: Aug. 31, 2009 to Maple-Downs-I G W Atlantic-ET

Ked Juror-ET

2124357 Good Plus-82 GM 2/01 *TV *TL
 PTA -141M -10F -9P 99R 1/10
 PTA +.79T +.95UDC -.97FLC GTPI +1270G

Firdell Aerostar Babette-ET

14504541 Excellent-90 VEVVE GMD DOM
 3-02 2x 365d 41140 3.9 1542 3.0 1245
 2-01 2x 344d 31570 3.8 1195 3.1 967

Regancrest Elton Durham-ET

2250783 Excellent-90 GM 8/01 *TR *CV *TL
 PTA -273M -35F +6P 99R 1/10
 PTA +2.35T +2.39UDC +2.03FLC GTPI +1550G

Silverridge Aeroline Libby

10542816C Very Good-88 VVVVE @ 4-10
 1-11 2x 365d 22936 3.8 878 3.4 780

4th Dam

Silverridge Lindsay Tab VG-86-4YR-CAN

6-00 2x 365d 25785 4.1 1060 3.4 888
 Life: 5 Lact 124944 3.9 4879 3.3 4184

5th Dam

Silverridge Leta Citation EX-CAN 2E

9-08 2x 365d 25651 3.8 981 3.4 860
 Life: 9 Lact 180001 4.0 7158 3.4 6232

6th Dam

Indian Garden Ruth VG-85-CAN

7-02 2x 355d 24079 4.2 1001
 Life: 6 Lact 100371 4.3 4341

Oliveholme Aeroline-TW-ET

5429396C EX-CAN EXTRA'97 *TV *TL
 PTA +360M +15F +11P 99R 4/08
 PTA +1.23T +.42UDC +.94FLC TPI +1260M

Silverridge G B Linda

6480607C VG-86-4YR-CAN
 5-05 2x 365d 34750 4.1 1429 3.0 1043
 7-03 2x 356d 31363 4.5 1400 3.4 1052
 4-03 2x 365d 29830 3.7 1096 3.2 942
 8-04 2x 315d 27108 4.2 1131 3.3 882
 Life: 6 Lact 187054 4.2 7793 3.3 6257

Sunny-Hillvue Herd Dispersal

LOT 504

SUNNY-HILLVUE DRK SNOWYDAY

137656538 Good Plus-83 @ 3-05

Born: July 26, 2006

2-01 2x 331d 20150 3.4 693 2.9 583

3-01 2x 172d 12058 3.6 438 2.9 355 RIP

Milking 38 lbs/day

Bred: Nov. 14, 2009 to Mr Atlees Sht Aftershock-ET

Maternal sister to Snowday

Sunny-Hillvue Ed Snowangel VG-85 VG-MS

Sells as Lot 553

Far-O-La Debbie-Jo Drake-ET

130498623 *TV *TL

PTA -730M -26F -16P 99R 1/10

PTA -0.1PL 2.75SCS +0.8DPR

PTA +2.17T +2.67UDC +1.61FLC 99R 1/10

GTPI +1502G

Sunny-Hillvue Snowwhite-ET

135299555 Very Good-85 VG-MS @ 4-00

3-03 2x 338d 16680 4.3 711 3.2 534

Full sister to Snowbite

Sunny-Hillvue Enc Snowstorm VG-89 EVEVE

2-07 2x 365d 27310 3.7 1009 3.1 840

3rd Dam

Sunny-Hillvue Ro-Bo Snow EX-90 EVEVE

3-06 2x 365d 19540 4.2 830 3.2 629

Marcrest Encore

2048702 Excellent-96 GM 2/99 *TV *TL

PTA -931M -25F -27P 99R 1/10

PTA +1.02T +.81UDC -.26FLC GTPI +1007M

Sunny-Hillvue CC Snowflake

15316201 Excellent-91 EEEVE 3E

5-09 2x 365d 30240 4.1 1231 3.0 901

4-03 2x 365d 28610 3.6 1027 3.0 859

3-03 2x 317d 24740 3.6 886 3.0 746

Life: 1528d 110270 3.8 4160 3.0 3353

LOT 507

SUNNY-HILLVUE ADV COLETTE

13207317 Very Good-85 VG-MS @ 3-03

Born: September 1, 2006

2-01 2x 325d 18740 3.4 631 3.2 604

3-02 2x 110d 7392 4.0 299 3.3 245 RIP

Milking 81 lbs/day

Bred: March 1, 2010 to Pine-Tree Spearmint-ET

KHW Kite Advent-Red-ET

133002953 Excellent-94 *TV *TL *TD

PTA -1189M -19F -27P 99R 1/10

PTA +0.9PL 3.02SCS +2.1DPR

PTA +2.40T +2.29UDC +1.56FLC 99R 1/10

GTPI +1463G

Sunny-Hillvue Rubs Colette

134829771 Good Plus-83 @ 2-03

2-00 2x 320d 22810 3.7 845 3.4 772

3rd Dam

Sunny-Hillvue BS Colette-ET EX-95 2E DOM

7-00 2x 365d 38240 3.7 1432 3.1 1168

Life: 2669d 223044 3.7 8296 3.1 6887

• 2nd Aged Cow Eastern Fall/Nat 1996

4th Dam

Knox-Hill Sexation Colette EX-93 2E DOM

6-00 2x 347d 30330 4.0 1204 3.0 980

Life: 1452d 104450 3.9 4035 3.0 1870

STBVQ Rubens-ET

5844883C VG-CAN GM 8/04 *RC *TV *TL

PTA -568M -19F -1P 99R 1/10

PTA +1.20T +2.08UDC +.15FLC GTPI +1378G

Sunny-Hillvue DM Collete-ET

131816624 Excellent-90 EVEVE

5-01 2x 365d 23100 4.4 1009 3.3 765

3-02 2x 301d 18070 4.2 764 3.3 600

LOT 508

SUNNY-HILLVUE KITE JOY

138207326 Good Plus-83 @ 3-03

Born: September 1, 2006

2-06 2x 315d 18532 3.9 721 3.1 569

Dry

Bred: May 31, 2010 to Lawrence-Haven Ashton-Red

Full sister to Joy

Sunny-Hillvue Kite Jossalyn EX-91 EEEEE

3-09 2x 365d 29600 2.7 787 2.9 864

• 3rd Spring Yrlg Heifer Mideast Fall/Nat 2005

Sells as Lot 381

Markwell Kite-ET

128460878 EX-CAN *RC *TV *TL

PTA -1269M -27F -40P 99R 1/10

PTA -4.4PL 3.14SCS -1.9DPR

PTA +1.97T +1.28UDC -.33FLC 99R 1/10

GTPI +853G

Sunny-Hillvue Drham Jaycie

132193289 Very Good-86 VG-MS @ 3-04

2-02 2x 365d 22130 4.2 923 3.5 776

3-05 2x 365d 21220 3.8 813 3.4 731

3rd Dam

Sunny-Hillvue Encore Jet VG-86

2-02 2x 365d 26730 3.2 846 3.1 832

Regancrest Elton Durham-ET

2250783 Excellent-90 GM 8/01 *TR *CV *TL

PTA -273M -35F +6P 99R 1/10

PTA +2.35T +2.39UDC +2.03FLC GTPI +1550G

Sunny-Hillvue Jolt Jet

123413107 Good Plus-80 @ 2-05

6-11 2x 365d 30980 3.4 1058 3.0 920

4-00 2x 275d 24290 4.4 1069 3.0 731

5-11 2x 317d 24110 3.5 834 3.1 752

Life: 1903d 145230 3.8 5551 3.1 4445

LOT 509

Regancrest Dundee-ET

127640114 Excellent-95 *TV *TL
PTA -419M -24F -8P 99R 1/10
PTA -2.0PL 3.04SCS -0.2DPR
PTA +2.13T +2.28UDC +.93FLC 99R 8/09
GTPI +1325G

Sunny-Hillvue Vern Princess

135506060 Good Plus-82 @ 3-00
2-00 2x 332d 18050 3.7 676 3.3 587

SUNNY-HILLVUE DDEE PERFORM

138207531 Good Plus-81 @ 3-03
Born: September 2, 2006
2-06 2x 365d 20680 3.8 793 3.2 666
Milking 56 lbs/day 4.5%F
Bred: Oct. 11, 2009 to o Sunny-Hillvue Jas Atom-ET
66738848

Marcrest Encore

2048702 Excellent-96 GM 2/99 *TV *TL
PTA -931M -25F -27P 99R 1/10
PTA +1.02T +.81UDC -.26FLC GTPI +1007M

Snow-N Denises Dellia

12895802 Excellent-95 2E GMD DOM *TV *TL
6-00 2x 365d 35230 4.0 1425 3.0 1049
Life: 2558d 180240 3.9 7108 3.2 5723

Jafral Forbid Verney-ET

133097166
PTA +29M -7F +15P 89R 1/10
PTA +.60T +.65UDC -.78FLC TPI +1426

Lucky-Buttke Wade Prissie

131161966 Good-78 @ 3-09
6-05 2x 318d 22550 3.9 882 3.2 722
5-03 2x 351d 21720 3.7 799 3.1 676
3-05 2x 269d 18840 3.9 741 3.2 594
2-06 2x 295d 18390 3.4 625 3.1 575
4-04 2x 275d 18250 3.4 625 3.0 546
Life: 1559d 103010 3.7 3794 3.1 3214

3rd Dam

Maview Promise Performer EX-90 EVEVE 2E
3-05 2x 341d 29410 3.5 1035 3.0 868
Life: 1403d 112570 3.2 3633 2.9 3242

4th Dam

Maview Promise Simon EX-91 EEEVV 3E
7-05 3x 365d 29760 3.2 950 2.5 749
Life: 2633d 198420 3.2 6367 2.6 5122

5th Dam

Maview Promise Enterprise EX-91 GMD DOM
6-03 3x 365d 32780 3.2 1046 2.6 850
Life: 3056d 230350 3.1 7079 2.7 6225

6th Dam

Maview Precious Bootmaker EX-90 3E GMD
8-02 3x 365d 27250 3.7 1007 3.0 820
Life: 4243d 273770 3.5 9656 2.9 5877

7th Dam

Maview Purity Rockman EX-90 EEEV
6-11 2x 327d 27450 3.9 1071
Life: 2228d 149350 3.9 5879

LOT 511

KHW Kite Advent-Red-ET

133002953 Excellent-94 *TV *TL *TD
PTA -1189M -19F -27P 99R 1/10
PTA +0.9PL 3.02SCS +2.1DPR
PTA +2.40T +2.29UDC +1.56FLC 99R 1/10
GTPI +1463G

Sunny-Hillvue Rbns Fire-Red

133974889 Good Plus-83
4-8 2x 322d 24210 3.4 817 3.0 734
5-09 2x 305d 23420 3.1 735 3.0 695
2-01 2x 365d 20390 3.2 651 3.3 679
3-07 2x 313d 18710 3.8 703 3.2 599

SUNNY-HILLVUE A FIREFLY-RED

138207568 Good Plus-80 @ 2-08
Born: September 21, 2006
1-11 2x 331d 19890 2.7 538 2.9 570
2-11 2x 185d 6725 3.3 224 2.9 194 RIP
Milking 37 lbs/day

Bred: Nov. 22, 2009 to Ernest-Anthony Jonah-Red

Markwell Kite-ET

128460878 EX-CAN *RC *TV *TL
PTA -1296M -27F -40P 99R 1/10
PTA +1.97T +1.28UDC -.33FLC GTPI +853G

Kamps-Hollow Altitude-ET

129136431 Excellent-95 EEEEE 2E DOM *RC *CV
7-00 2x 365d 39690 4.7 1849 3.5 1385
Life: 1844d 144460 4.4 6295 3.7 5288

STBVQ Rubens-ET

5844883C VG-CAN GM 8/04 *RC *TV *TL
PTA -568M -19F -1P 99R 1/10
PTA +1.20T +2.08UDC +.15FLC GTPI +1378G

Sunny-Hillvue Burke Firefly

129666848 Good-79 @ 2-10 *RC
2-01 2x 309d 21090 3.5 742 3.2 681
3-00 2x 286d 21160 2.9 616 3.1 649

4th Dam

S-Queens-Manor Regina-Red-ET VG-87 EX-MS
5-01 2x 338d 18180 4.0 725 3.2 577

5th Dam

Maple-Leaf-M Prestar Reba-Red VG-86
4-04 2x 305d 28500 3.6 1038 3.3 936

6th Dam

Maple-Leaf-M St Pine Rhyme VG-88 VVVE
6-02 2x 305d 27240 4.4 1194 3.2 876

Cal-Denier Aero Burke-ET

2221666 Excellent-90 *TL
PTA -734M +1F -6P 99R 1/10
PTA -.04T -.55UDC +.27FLC TPI +1011
Sunny-Hillvue Firfly-Red-TW
13944435 Very Good-87 VEVVV
9-00 2x 340d 24540 3.8 926 2.9 708
7-10 2x 349d 22750 3.5 802 2.9 654
6-10 2x 308d 21940 4.1 902 3.0 652
Life: 2240d 145999 3.8 5484 2.9 4266



SUNNY-HILLVUE CHECKER PETAL EX-93 EEEVE
DAM OF LOT 514

LOT 514

SUNNY-HILLVUE RAMPAG PETALS

138207625 Good Plus-81 @ 3-02 *RC

Born: October 7, 2006

2-07 2x 280d 15990 4.3 692 2.9 486

Dry

Bred: July 22, 2009 to Ernest-Anthony Jonah-Red

Pursuit September Storm-ET

6820564C EX-CAN GM 2/07 *RC *TV *TL

PTA -194M +35F -11P 99R 1/10

PTA +2.05T +1.69UDC +2.79FLC GTPI +1495G

Lavender Ruby Redrose-Red

7254370C Excellent-95 EEEEE 2E

4-00 2x 365d 43754 3.6 1559 3.5 1543

• *Supreme Champion World Dairy Expo 2005*

Sunny-Hillvue RM Checker

13241143

PTA -1528M -35F -51P 60R 1/10

PTA +.78T +1.48UDC -.31FLC TPI +1077

Sunny-Hillvue Durham Pettie

129701000 Very Good-85 @ 4-10

3-07 2x 304d 23380 3.4 785 3.1 733

2-03 2x 365d 21860 3.9 851 3.3 713

Rosedale-L Rampage-Red-ET

135173006 Very Good-87 *TV *TL

PTA -237M -21F -19P 99R 1/10

PTA -1.5PL 2.92SCS +1.5DPR

PTA +.35T +.32UDC +.58FLC 98R 1/10

GTPI +1193G

Sunny-Hillvue Checker Petal

134829799 Excellent-93 EEEVE

3-01 2x 276d 21760 4.5 969 3.1 674

4-00 2x 305d 20410 4.2 854 3.5 717

2-00 2x 305d 16570 4.1 679 3.2 524

• *1st Sr 3-Yr-Old Cow Mideast Fall/Nat 2007*

• *Int Champion Mideast Fall.Nat 2007*

4th Dam

Sunny-Hillvue Nick Plum VG-85

4-06 2x 338d 27870 4.0 1102 2.9 820

5th Dam

Sunny-Hillvue Astrojet Pettles EX-94 4E

7-03 2x 365d 32530 4.4 1427 2.9 958

Life: 3165d 208540 4.4 9155 3.1 6374

Regancrest Elton Durham-ET

2250783 Excellent-90 GM 8/01 *TR *CV *TL

PTA -273M -35F +6P 99R 1/10

PTA +2.35T +2.39UDC +2.03FLC GTPI +1550G

Sunny-Hillvue Astre Pebbles

15309572 Very Good-88 VG-MS DOM

2-07 2x 365d 31570 3.8 1207 3.1 989

3-09 2x 365d 29930 4.0 1183 3.1 929

7-04 2x 365d 28520 3.8 1094 3.1 874

5-03 2x 331d 27080 3.9 1065 3.0 801

Life: 1607d 125570 3.9 4951 3.1 3895

LOT 515**SUNNY-HILLVUE SNOWCREAME**

138207634 Good Plus-81 @ 3-02

Born: October 8, 2006

2-00 2x 323d 16600 4.0 661 3.2 535

3-00 2x 132d 10552 4.8 506 3.1 328 RIP

Milking 71 lbs/day 4.7%F

Bred: Feb. 5, 2010 to Mr Regelcreek Shot AI-ET

Penn-Gate Durham Fitsy-ET

135569542 Very Good-89 *TV

PTA -1252M -32F -22P 71R 1/10

PTA +2.0PL 2.86SCS +1.3DPR

PTA +1.75T +1.66UDC +1.38FLC 41R 1/10

PTPI +1447

Sunny-Hillvue CK Snowdrift

133993686 Very Good-85 @ 4-00

2-06 2x 329d 16860 4.3 725 3.3 552

3-09 2x 253d 16270 5.2 844 3.2 515

*3rd Dam***Sunny-Hillvue CC Snowflake** EX-91 EEEVE 3E

5-09 2x 365d 30240 4.1 1231 3.0 901

Life: 1528d 110270 3.8 4160 3.0 3353

*4th Dam***Sunny-Hillvue Ro-Bo Snow** EX-90 EVEVE

3-06 2x 365d 19540 4.2 830 3.2 629

Sunny-Hillvue RM Checker

13241143

PTA -1528M -35F -51P 60R 1/10

PTA +.78T +1.48UDC -.31FLC TPI +1077

Sunny-Hillvue Snowdust

17278134 Very Good-87 VG-MS @ 3-09

3-07 2x 365d 24520 4.3 1049 3.1 771

5-10 2x 257d 25950 3.5 906 2.9 751

Life: 1503d 104430 3.8 3975 3.0 3128

LOT 517**SUNNY-HILLVUE FITZY VALERI**

138207661 Very Good-85 VG-MS @ 2-07

Born: October 15, 2006

2-03 2x 357d 19942 4.1 811 3.2 646

3-04 2x 33d 2402 4.3 104 3.4 82 RIP

Milking 93 lbs/day 4.3%F

Fresh: February 5, 2010

Penn-Gate Durham Fitsy-ET

135569542 Very Good-89 *TV

PTA -1252M -32F -22P 71R 1/10

PTA +2.0PL 2.86SCS +1.3DPR

PTA +1.75T +1.66UDC +1.38FLC 41R 1/10

PTPI +1447

Sunny-Hillvue Alf Valiant

134829977 Good-77 @ 3-04 *RC

4-02 2x 365d 24630 3.7 902 3.3 803

2-00 2x 326d 18090 3.1 561 3.2 581

3-01 2x 289d 17030 3.8 643 3.2 548

*3rd Dam***Sunny-Hillvue Extreme Value** GP-81

3-02 2x 365d 28450 4.0 1127 3.2 923

Mohrfield Alf-Red-ET

131758812

PTA -1019M -45F -18P 96R 1/10

PTA +.38T +1.13UDC -.12FLC GTPI +1150G

Sunny-Hillvue Value

130925372 Fair-70 @ 3-03

2-00 2x 323d 17560 3.8 663 3.1 544

LOT 518**SUNNY-HILLVUE MRSAM OREO**

138207670 Good-77 @ 3-02

Born: October 27, 2006

2-03 2x 365d 23334 4.2 971 3.0 699

Dry

Bred: June 27, 2009 to Klasic Big Time-ET

Regancrest-MR Drham Sam-ET

207184639 GM 8/06 *TV *TL

PTA +146M +30F +8P 99R 1/10

PTA +1.2PL 2.92SCS -1.6DPR

PTA +1.61T +1.52UDC +1.85FLC 99R 1/10

GTPI +1630G

Sunny-Hillvue Beaver Orion

134830386 Good-79 @ 2-06

3-08 2x 363d 23050 4.6 1059 3.2 748

1-11 2x 274d 12810 4.5 580 3.2 411

*3rd Dam***Sunny-Hillvue Int Onyx** GP-84

4-10 2x 365d 23260 4.5 1044 3.0 704

Coyne-Farms Patron Beaver

122328536 Excellent-91 *TV *TL

PTA +47M +29F +10P 99R 1/10

PTA -.84T -.39UDC -1.60FLC GTPI +1217G

Sunny-Hillvue Shark Octavia

128771707 Good Plus-81 @ 4-04

4-04 2x 292d 23310 4.0 921 3.0 690

3-03 2x 319d 21770 4.1 896 3.1 668

2-02 2x 324d 18580 4.4 821 3.1 580

LOT 520

SUNNY-HILLVUE MRSAM CLASSIC

138207698

Born: October 31, 2006

2-02 2x 365d 18995 3.5 691 3.0 582

Dry

Bred: July 2, 2009 to BVK Durham Duty-ET

Regancrest-MR Drham Sam-ET

207184639 GM 8/06 *TV *TL

PTA +146M +30F +8P 99R 1/10

PTA +1.2PL 2.92SCS -1.6DPR

PTA +1.61T +1.52UDC +1.85FLC 99R 1/10

GTPI +1630G

Sunny-Hillvue Lee Classy-ET

134865748 Good Plus-84 VG-MS @ 3-04

3-01 2x 365d 24930 4.1 1030 3.2 793

4-07 2x 365d 24050 4.0 965 3.2 761

2-00 2x 351d 21720 4.1 894 3.1 681

4th Dam

Knox-Hill Sexation Colette EX-93 2E DOM

6-00 2x 347d 30330 4.0 1204 3.0 980

Life: 1452d 104450 3.9 4035 3.0 1870

Comestar Lee-ET

5757117C EX-CAN GM 8/03 *TV *TL

PTA -516M +20F -7P 99R 1/10

PTA +1.04T +.64UDC +1.01FLC GTPI +1378G

Sunny-Hillvue BS Colette-ET

14285923 Excellent-95 EEEEE 2E DOM

7-00 2x 365d 38240 3.7 1432 3.1 1168

4-09 2x 346d 34184 3.6 1225 3.2 1104

10-0 2x 365d 31420 4.0 1271 3.0 943

Life: 2669d 223044 3.7 8296 3.1 6887

• 2nd Aged Cow Eastern Fall/Nat 1996

LOT 521

SUNNY-HILLVUE STORM DILLIA

138207700 Good Plus-83 @ 3-01

Born: November 5, 2006

2-01 2x 282d 14140 4.2 593 3.3 560

3-01 2x 88d 5137 5.4 278 3.4 176 RIP

Milking 66 lbs/day 5.3%F

Fresh: December 12, 2009

Regan-Olmar Dur Storm-ET

61077248 *TV *TL

PTA -936M -24F -15P 94R 1/10

PTA -0.1PL 2.66SCS -1.5DPR

PTA +1.99T +2.44UDC +.28FLC 86R 1/10

GTPI +1373G

Sunny-Hillvue Lotto Daido

134830180 Good-77 @ 2-08

3-00 2x 365d 22240 4.8 1066 3.3 744

2-01 2x 288d 17470 4.7 829 3.2 564

Regancrest Elton Durham-ET

2250783 Excellent-90 GM 8/01 *TR *CV *TL

PTA -273M -35F +6P 99R 1/10

PTA +2.35T +2.39UDC +2.03FLC GTPI +1550G

Ms Regancrest Salena-ET

60602108 Very Good-89 EVEVE GMD

2-04 2x 335d 28680 4.3 1220 3.0 852

• Nom All-American Winter Yrlg Heifer 2003

Altagen Lotto-ET

7175738C VG-85-CAN *TV *TL

PTA -881M +2F -19P 98R 1/10

PTA +.76T +.74UDC +1.21FLC TPI +1238M

Sunny-Hillvue Ice Dot

130925402 Good Plus-83 @ 3-02

1-11 2x 365d 20760 4.6 946 3.3 684

3-01 2x 327d 19680 4.5 880 3.3 651

LOT 522

SUNNY-HILLVUE STORM MELODY

138207719 Good Plus-83 VG-MS @ 3-00

Born: December 7, 2006

2-00 2x 365d 24183 3.3 816 3.0 736

Dry

Bred: July 17, 2009 to Kingsmill Gldwyn Asteroid-ET

Regan-Olmar Dur Storm-ET

61077248 *TV *TL

PTA -936M -24F -15P 94R 1/10

PTA -0.1PL 2.66SCS -1.5DPR

PTA +1.99T +2.44UDC +.28FLC 86R 1/10

GTPI +1373G

Hardindale Landlord Missy

52379126 Good-78 @ 3-00

3-05 2x 365d 31860 3.5 1119 3.2 1009

1-11 2x 365d 25260 3.2 808 3.1 777

Regancrest Elton Durham-ET

2250783 Excellent-90 GM 8/01 *TR *CV *TL

PTA -273M -35F +6P 99R 1/10

PTA +2.35T +2.39UDC +2.03FLC GTPI +1550G

Ms Regancrest Salena-ET

60602108 Very Good-89 EVEVE GMD

2-04 2x 335d 28680 4.3 1220 3.0 852

• Nom All-American Winter Yrlg Heifer 2003

Holstein-Forum Landlord-ET

17302940 Very Good-85 *TL

PTA +210M +10F +17P 99R 1/10

PTA +.73T +.65UDC -.11FLC GTPI +1284G

Hardindale Wade Missy

124321544 Good Plus-84 @ 4-02

3-01 2x 365d 24650 3.4 830 2.7 676

4-09 2x 365d 20140 3.5 699 2.8 561

2-02 2x 283d 19200 3.3 638 3.0 577

LOT 524

SUNNY-HILLVUE STORM TWINK

138207737 Good Plus-83 @ 3-00

Born: December 27, 2006

1-09 2x 365d 20880 3.3 693 3.0 626

2-11 2x 75d 4169 4.6 193 3.4 142 RIP

Milking 58 lbs/day 4.2%F

Bred: Feb. 16, 2010 to Golden-Oaks St Alexander-ET

Regan-Olmar Dur Storm-ET

61077248 *TV *TL

PTA -936M -24F -15P 94R 1/10

PTA -0.1PL 2.66SCS -1.5DPR

PTA +1.99T +2.44UDC +.28FLC 86R 1/10

GTPI +1373G

Sunny-Hillvue Exh Twinkle

134422947 Good Plus-81

3-04 2x 365d 24430 3.9 951 3.1 763

5-07 2x 313d 23017 3.8 868 3.0 690 RIP

2-01 2x 365d 22930 3.4 776 3.2 724

4-07 2x 299d 16920 3.8 639 3.4 575

Sells as Lot 337

3rd Dam

Sunny-Hillvue Adonis Twinky EX-94 EEEEE 2E

4-10 2x 365d 40750 3.1 1256 3.0 1242

Life: 2255d 186280 3.8 7047 3.2 5905

4th Dam

Sunny-Hillvue HL Twinket VG-85

6-10 2x 365d 31390 3.9 1237 2.8 886

Life: 2010d 140850 3.9 5563 3.0 4255

Budjon-JK Encore Exhibit-ET

125791289 Excellent-91 *TV *TL

PTA -1612M -47F -36P 99R 1/10

PTA +.91T +.83UDC +.16FLC GTPI +850G

Sunny-Hillvue Silver Twinky

128709975 Excellent-90 EEEEE

6-01 2x 365d 35070 3.7 1313 2.9 1028

4-09 2x 365d 33560 3.4 1137 3.0 998

Life: 1820d 145330 3.7 5373 3.0 4426

LOT 525

SUNNY-HILLVUE SOCK

138207746 Good-79 @ 2-11

Born: January 17, 2007

2-09 2x 144d 8058 4.5 362 3.3 262 RIP

Milking 51 lbs/day 4.4%F

Bred: Jan. 22, 2010 to Lars-Acres Felc Fastpace-ET

Sunny-Hillside Jord Twit-TW

135298899

PTA +2M +26F +11P 41R 1/10

PTA +1.5PL 3.14SCS -1.4DPR

PTA +.72T +.99UDC +.33FLC 41R 1/10

PTPI +1484

Sunny-Hillvue Bstar Socks

14903576 Excellent-92 EEEEE 4E

8-04 2x 365d 31140 5.0 1551 3.1 966

10-3 2x 365d 27980 4.3 1193 3.1 881

6-02 2x 365d 26290 4.8 1254 3.3 855

2-05 2x 365d 23250 4.9 1129 3.4 791

4-10 2x 365d 23120 4.7 1089 3.4 789

12-6 2x 365d 22320 5.1 1135 3.0 667

Life: 3270d 208385 4.7 9891 3.2 6758

Ja-Bob Jordan-Red-ET

17378279 Excellent-90 *TV *TL

PTA -515M +32F +3P 99R 1/10

PTA +.58T +.73UDC -.25FLC GTPI +1367G

Sunny-Hillvue Adonis Twinky

17155563 Excellent-94 EEEEE 2E

4-10 2x 365d 40750 3.1 1256 3.0 1242

Life: 2255d 186280 3.8 7047 3.2 5905

To-Mar Blackstar-ET

1929410 Excellent-93 GM 1/96 *TV *TL

PTA -609M -24F -19P 99R 1/10

PTA -.18T -.41UDC -.48FLC GTPI +1138G

Sunny-Hillvue Astrojet Koneta

13724898 Good Plus-83

4-05 2x 351d 21470 5.0 1083 3.4 740

3-05 2x 304d 20600 4.9 1008 3.3 680

5-06 2x 285d 17920 4.9 880 3.4 601

LOT 526

SUNNY-HILLVUE TWIT SPARKLE

138207755 Good-77 @ 2-11 99%RHA-NA

Born: January 24, 2007

2-01 2x 357d 20856 3.6 748 3.1 642 RIP

Milking 53 lbs/day

Bred: Aug. 31, 2009 to Maple-Downs-I G W Atlantic-ET

Sunny-Hillside Jord Twit-TW

135298899

PTA +2M +26F +11P 41R 1/10

PTA +1.5PL 3.14SCS -1.4DPR

PTA +.72T +.99UDC +.33FLC 41R 1/10

PTPI +1484

Big-Elm Martian Sunny

134693673 Good Plus-82 @ 2-03

2-01 2x 365d 24910 3.2 807 2.9 728

Ja-Bob Jordan-Red-ET

17378279 Excellent-90 *TV *TL

PTA -515M +32F +3P 99R 1/10

PTA +.58T +.73UDC -.25FLC GTPI +1367G

Sunny-Hillvue Adonis Twinky

17155563 Excellent-94 EEEEE 2E

4-10 2x 365d 40750 3.1 1256 3.0 1242

Life: 2255d 186280 3.8 7047 3.2 5905

Overton-Acres Martian-ET

131917905

PTA -521M +6F +15P 62R 1/10

PTA +.52T +1.01UDC +.14FLC TPI +1354

Overton-Acres Shallet Sunny

131310379 96%RHA-NA

3-04 3x 305d 39360 4.1 1202 2.8 1111

4-10 3x 305d 39570 2.9 1153 2.7 1079

6-06 3x 287d 28640 4.2 1209 3.0 852

Life: 1415d 146470 3.4 4935 2.9 4188

Sunny-Hillvue Herd Dispersal

LOT 527

SUNNY-HILLVUE ADVENT MARLA

138207764 *RC

Born: January 28, 2007

2-00 2x 254d 11960 4.4 523 3.1 365

2-11 2x 59d 4046 4.4 178 3.0 120 RIP

Milking 78 lbs/day 4.9%F

Bred: March 3, 2010 to Pine-Tree Spearmint-ET

Maternal sister sells as Lot 378

KHW Kite Advent-Red-ET

133002953 Excellent-94 *TV *TL *TD

PTA -1189M -19F -27P 99R 1/10

PTA +0.9PL 3.02SCS +2.1DPR

PTA +2.40T +2.29UDC +1.56FLC 99R 1/10

GTPI +1463G

Sunny-Hillvue Int Marisela

128711826 Excellent-90 EEEVE 2E

7-03 2x 340d 27770 4.6 1267 3.1 865

8-04 2x 365d 27340 4.2 1136 3.2 873

6-03 2x 293d 26330 4.8 1130 3.0 722

5-04 2x 296d 25520 3.8 969 3.0 774

3rd Dam

C Fradon Astro Jet Malva EX-90 EEEVV

5-10 2x 365d 30850 4.7 1454 3.1 946

Life: 2243d 161700 4.7 7613 3.1 5007

4th Dam

Fradon Concord Fruit VG-85 VG-MS-CAN

8-05 2x 274d 18034 4.4 789 3.0 542

Robthom Integrity-ET

2150948 Excellent-96 GM 2/99 *TV *TL

PTA +7M -11F -17P 99R 1/10

PTA +.64T +.62UDC -.60FLC GTPI +1004G

Fradon Marla

15155765 Very Good-89 EEVVV DOM

9-07 2x 365d 27950 3.7 1046 2.8 796

4-01 2x 364d 25440 3.8 971 3.1 778

7-04 2x 365d 23820 4.2 990 3.0 722

Life: 3493d 207170 4.1 8506 3.0 6258

LOT 529

SUNNY-HILLVIEW DUN TWIZ

138591535 Good-78 @ 2-09

Born: March 11, 2007

2-07 2x 140d 7576 4.3 328 3.4 256 RIP

Milking 46 lbs/day 4.6%F

Bred: March 3, 2010 to Pine-Tree Spearmint-ET

Regancrest Dundee-ET

127640114 Excellent-95 *TV *TL

PTA -419M -24F -8P 99R 1/10

PTA -2.0PL 3.04SCS -0.2DPR

PTA +2.13T +2.28UDC +.93FLC 99R 8/09

GTPI +1325G

Sunny-Hillvue Titan Twinks

136250784 Good Plus-81 @ 4-11

3-01 2x 360d 21340 4.4 942 3.4 724

4-02 2x 338d 20362 4.5 914 3.3 680 RIP

2-01 2x 292d 15980 4.6 736 3.4 541

Sells as Lot 422

3rd Dam

Sunny-Hillvue Adonis Twinky EX-94 EEEEE 2E

4-10 2x 365d 40750 3.1 1256 3.0 1242

Life: 2255d 186280 3.8 7047 3.2 5905

4th Dam

Sunny-Hillvue HL Twinket VG-85

6-10 2x 365d 31390 3.9 1237 2.8 886

Life: 2010d 140850 3.9 5563 3.0 4255

Tobis Durham Titan-ET

131621936 *TV

PTA -933M +4F +3P 99R 1/10

PTA +1.14T +1.45UDC +.75FLC TPI +1505M

Sunny-Hillvue Ap Trinket-TW

133974320 Very Good-86 VG-MS @ 3-05

2-04 2x 365d 26830 3.4 902 3.1 808

3-07 2x 365d 24590 3.0 732 3.2 793

LOT 530

SUNNY-HILLVUE DUNDEE ANDI

138591544

Born: March 12, 2007

2-07 2x 138d 7256 3.5 252 3.1 224 RIP

Milking 58 lbs/day

Bred: March 5, 2010 to Pine-Tree Spearmint-ET

Regancrest Dundee-ET

127640114 Excellent-95 *TV *TL

PTA -419M -24F -8P 99R 1/10

PTA -2.0PL 3.04SCS -0.2DPR

PTA +2.13T +2.28UDC +.93FLC 99R 8/09

GTPI +1325G

Sunny-Hillvue Titnic Andrea

136250944 Good Plus-83 @ 4-10

2-01 2x 365d 22910 4.0 911 3.1 720

3-04 2x 330d 20900 3.6 756 3.1 656

4-04 2x 258d 14422 3.3 479 3.0 420 RIP

Sells as Lot 426

3rd Dam

Sunny-Hillvue Raider Andrea VG-87 VVVVV

4-09 2x 365d 22090 3.5 765 2.9 638

Life: 2301d 120617 3.8 4585 3.0 3578

4th Dam

C Ventura Warden Andrea EX-93 EVEE 2E

8-10 2x 346d 19710 3.6 714 3.0 588

Hartline Titanic-ET

123066734 VG-88-CAN GM 8/08 *TV *TL

PTA -730M -26F -16P 99R 1/10

PTA +2.17T +2.67UDC +1.61FLC GTPI +1502G

Sunny-Hillvue Dr Andrea

132140423 Good Plus-84 @ 4-06

6-04 2x 365d 18760 4.1 771 2.9 549

2-02 2x 295d 18520 3.7 681 3.1 583

4-04 2x 278d 17570 4.0 710 3.0 524

5-02 2x 292d 16730 3.6 604 3.0 506

LOT 531

SUNNY-HILLVUE MILE KENZY-TW

138591553 Good-79 @ 2-09

Born: March 14, 2007

2-03 2x 264d 11647 4.9 573 3.2 378 RIP

Milking 46 lbs/day 5.4%F

Bred: Nov. 10, 2009 to Sunny-Hillvue Gwn Mole-ET
139687367

Mara-Thon BW Marshall-ET

2290977 Very Good-86 GM 1/08 *TV *TL

PTA +1225M +21F +25P 99R 1/10

PTA +1.65T +1.60UDC +2.15FLC GTPI +1523G

Ms Regancrest Patrn Dee-ET

17282156 Very Good-88 VG-MS DOM

2-03 2x 365d 30670 4.0 1238 3.4 1031

Ocean-View Zenith-TW-ET

129800008 GM 8/08 *TV *TL

PTA -175M +13F +4P 99R 1/10

PTA +1.37T +1.78UDC -.38FLC GTPI +1707G

Sunny-Hillvue Int Kemper

17278040 Good-76

4-02 2x 365d 33420 3.8 1274 2.9 957

5-06 2x 365d 31580 3.8 1210 2.8 886

3-00 2x 345d 27910 3.5 990 2.9 801

Life: 1957d 155850 3.6 5638 2.9 4449

Regancrest-RB Miles-ET

207485477 Excellent-92 *TV *TL

PTA -466M +36F -5P 99R 1/10

PTA -0.2PL 2.95CS -0.9DPR

PTA +1.47T +1.78UDC +1.12FLC 94R 1/10

GTPI +1496G

Sunny-Hillvue Zen Kelsey

133516351 Good Plus-80 @ 3-11

4-07 2x 365d 27870 4.0 1128 3.4 939

6-03 2x 316d 23950 3.6 839 3.1 731

3-09 2x 277d 21280 3.8 803 3.1 650

2-10 2x 273d 19600 3.5 685 3.2 632

1-10 2x 321d 19290 4.0 774 3.2 613

Life: 1692d 116380 3.8 4443 3.2 3742

4th Dam

Wolff-Manor Ned Kit VG-87 VG-MS

6-05 2x 333d 24180 3.6 865 2.8 674

Life: 1608d 118000 3.4 3972 2.8 3301

5th Dam

Wolff-Manor Profit Kitty-Red VG-86 VG-MS

3-03 2x 305d 20840 3.6 751 3.2 672

6th Dam

Wilff-Manor Charlie Kay GP-83 VG-MS

5-11 2x 305d 24100 3.9 945 3.2 778

Life: 1639d 105400 4.0 4232 3.2 3350

Robthom Integrity-ET

2150948 Excellent-96 GM 2/99 *TV *TL

PTA +7M -11F -17P 99R 1/10

PTA +.64T +.62UDC -.60FLC GTPI +1004G

Sunny-Hillvue Rochest Kemp

14361673 Good-75 @ 3-04 *RC

6-02 2x 365d 31410 3.6 1128 2.8 883

5-01 2x 319d 29600 3.4 1016 2.7 811

3-09 2x 365d 28623 3.4 981 2.9 819

Life: 1619d 120069 3.6 4269 2.9 3454

LOT 534

SUNNY-HILLVUE MIL ANGELINA

138591571 Good-75 @ 2-09

Born: March 20, 2007

2-02 2x 255d 10017 4.4 443 3.5 346

Dry

Bred: Aug. 15, 2009 to BKB Affirmed-ET

Mara-Thon BW Marshall-ET

2290977 Very Good-86 GM 1/08 *TV *TL

PTA +1225M +21F +25P 99R 1/10

PTA +1.65T +1.60UDC +2.15FLC GTPI +1523G

Ms Regancrest Patrn Dee-ET

17282156 Very Good-88 VG-MS DOM

2-03 2x 365d 30670 4.0 1238 3.4 1031

Jol-Lee Mtoto Modem-ET

128742024 *TV *TL

PTA -239M 04F -11P 89R 1/10

PTA -.81T -.83UDC -1.63FLC TPI +1100

Sunny Hillvue Rod Angel

128816793 Good-77 @ 2-06

2-01 2x 274d 17980 3.1 566 3.0 531

Regancrest-RB Miles-ET

207485477 Excellent-92 *TV *TL

PTA -466M +36F -5P 99R 1/10

PTA -0.2PL 2.95CS -0.9DPR

PTA +1.47T +1.78UDC +1.12FLC 94R 1/10

GTPI +1496G

Sunny-Hillview Mod Angelica

132710323 Good Plus-83

6-07 2x 362d 23770 3.1 743 2.8 669

5-01 2x 323d 22810 3.4 781 2.7 622

4-01 2x 324d 20930 3.5 737 2.8 578

3-01 2x 298d 20330 2.6 537 2.8 574

2-02 2x 289d 16000 3.6 577 2.9 471

Life: 1596d 103840 3.3 3375 2.8 2914

Sells as Lot 250

3rd Dam

Sunny-Hillvue RC Anniversary

4th Dam

Sunny-Hillvue Pre Andrea-ET

5th Dam

C Ventura Warden Andrea EX-93 EVEE 2E

8-10 2x 346d 19710 3.6 714 3.0 588

6th Dam

Pickolea Downy Amy VG-85 VG-MS-CAN

7-06 2x 323d 22736 3.8 858

Life: 6 Lact 105858 3.6 3814

7th Dam

Pickolea Reflection Amy GP-83-CAN *1 STAR

4-09 2x 332d 19120 3.8 725

8th Dam

Pickolea Sovereign Amy VG-CAN

8-05 2x 330d 18247 3.4 628

Life: 13 Lact 195374 3.4 6689

9th Dam

Pickolea Amy R VG-CAN

4-01 2x 335d 14330 4.2 595

LOT 535

CHARLESDALE MRS SHADE

138591580 Good Plus-81 @ 2-09
Born: March 22, 2007
2-01 2x 305d 21064 3.4 715 3.1 655 RIP
Milking 51 lbs/day 4.4%F

Bred: Oct. 11, 2009 to Maple-Downs-I G W Atlantic-ET

Regancrest-MR Drham Sam-ET

207184639 GM 8/06 *TV *TL
PTA +146M +30F +8P 99R 1/10
PTA +1.2PL 2.92SCS -1.6DPR
PTA +1.61T +1.52UDC +1.85FLC 99R 1/10
GTPI +1630G

Charlesdale Hi Metro Spice

62065913 Very Good-87 VG-MS
3-02 2x 365d 28130 3.7 1027 3.1 876
2-03 2x 233d 14220 3.6 507 2.9 417
4-08 2x 193d 15401 4.1 632 3.0 456 RIP
Sells as Lot 108

Same family:

Charlesdale Superstition-ET GTPI +2224G

• #2 TPI Bull of Breed

Regancrest Elton Durham-ET

2250783 Excellent-90 GM 8/01 *TR *CV *TL
PTA -273M -35F +6P 99R 1/10
PTA +2.35T +2.39UDC +2.03FLC GTPI +1550G

Sher-Est Emory Swanny

17037800 Excellent-90 EEV 2E DOM *TV
2-02 2x 365d 27720 4.1 1150 3.1 871
4-02 3x 305d 25620 4.4 1136 3.1 807

Sikkema-Star-W Hi Metro-ET

17093333 Excellent-96 *CV *TL
PTA -727M -9F -5P 99R 1/10
PTA +2.56T +2.78UDC +2.05FLC GTPI +1341G

Charlesdale Astar Spicey

60817534 Very Good-85 @ 4-04
4-09 2x 365d 28600 3.9 1123 2.8 796
3-09 2x 301d 26490 4.1 1085 2.8 742

3rd Dam

Charlesdale KJ Sugar-ET EX-90 EEVVE
4-02 3x 365d 34220 4.1 1386 3.2 1083
Life: 2036d 135220 4.0 5471 3.2 4273

4th Dam

Huntercrest Astre Swede EX-91 EEEEE 2E
5-04 2x 305d 27290 3.5 951 2.9 778

5th Dam

Huntercrest Majesty Suellen VG-87 VG-MS
4-03 2x 283d 36940 3.9 1432 2.5 940

6th Dam

Huntercrest Spruce Suzy EX-90 EEV
4-10 2x 348d 36930 2.7 985 3.0 1100

7th Dam

Huntercrest Spirit EX-93 2E
6-10 2x 365d 28550 3.9 1101 3.2 922

8th Dam

Huntercrest Ivanhoe Suzy VG-86 VG-MS
4-02 2x 305d 26130 3.7 967 3.3 875

9th Dam

Gor-Wood-D Golden Sadie VG-88 VVVE
4-10 2x 300d 23730 4.2 989

Life: 1770d 101680 4.4 4437

10th Dam

Millervale Lady Astronaut VG-85
5-03 2x 305d 17250 3.8 662

LOT 540

SUNNY-HILLVUE KITE PENELOPE

138590600 Very Good-85 VG-MS @ 2-06
Born: June 1, 2007
2-03 2x 163d 11141 3.6 398 3.1 345 RIP
Milking 63 lbs/day

Bred: March 5, 2010 to Pine-Tree Spearmint-ET

Donnandale Skychief-ET

391661C EX-CAN GM 2/01 *TL
PTA -341M -14F -11P 99R 1/10
PTA +1.06T +.98UDC -.98FLC TPI +1378M

Stokey Elm Park Blackrose-ET

14085789 Excellent-96 3E GMD DOM
5-03 3x 365d 42230 4.6 1939 3.4 1432
• All-American & All-Canadian Jr 3-Yr-Old 1993

Roylane Jordan-ET

17064727 Excellent-95 GM 2/04 *TV *TL
PTA -297M -8F -12P 99R 1/10
PTA +1.99T +2.09UDC +.20FLC GTPI +1347G

Sunny-Hillvue Durham Peatie

131195402 Very Good-87 VG-MS *RC
3-00 2x 315d 19000 4.2 801 3.3 620
2-00 2x 304d 17480 3.7 648 3.4 593
4-11 2x 318d 17280 4.0 687 3.2 556
4-01 2x 268d 17050 3.4 581 3.3 568

Markwell Kite-ET

128460878 EX-CAN *RC *TV *TL
PTA -1269M -27F -40P 99R 1/10
PTA -4.4PL 3.14SCS -1.9DPR
PTA +1.97T +1.28UDC -.33FLC 99R 1/10
GTPI +853G

Sunny-Hillvue Roy Peabody

136385060

3rd Dam

Sunny-Hillvue Storm Peanut GP-83
2-03 2x 325d 22400 4.4 979 3.0 669

4th Dam

Leawood Patrice VG-85
4-10 2x 364d 23650 4.3 1015 2.9 692

5th Dam

Leawood Panache VG-87 VEVV
3-06 2x 292d 18130 3.8 694 3.0 543

6th Dam

Leawood Justa Pleasure EX-90 VEVE
3-07 2x 365d 25900 4.5 1176 3.3 850

7th Dam

Leawood Jocelyn EX-90 EEVE
3-06 2x 365d 20790 5.5 1140 3.6 755

Life: 1824d 101430 5.0 5044 3.6 3635

8th Dam

Leawood Judie EX-90 EEV
4-10 2x 365d 27990 4.4 1234 3.1 855

9th Dam

Leawood RORAE Judy EX-90 2E DOM
7-10 2x 365d 27701 4.3 1193 3.3 917

Life: & lact 154922 3.9 6098 3.4 4817

10th Dam

Hyckory-Hill Tornado Judy EX-92 2E
7-10 2x 365d 25210 4.4 1116

Life: 6 Lact 113239 4.3 4925

LOT 542

SUNNY-HILLVUE DRAKE MICAYLA

138591638

Born: June 2, 2007

Pasture-bred before Sept. 15, 2009 to
Sunny-Hillvue Gwn Magnum-ET 138768922

Far-O-La Debbie-Jo Drake-ET

130498623 *TV *TL

PTA -730M -26F -16P 99R 1/10

PTA -0.1PL 2.75SCS +0.8DPR

PTA +2.17T +2.67UDC +1.61FLC 99R 1/10

GTPI +1502G

Big-Elm Eland Melody

134693691 Good Plus-81 @ 4-00

3-09 2x 315d 25590 3.6 928 2.8 707

4-10 2x 330d 24910 3.4 858 2.9 713

2-01 2x 281d 19480 3.6 707 2.8 551

2-11 2x 261d 18740 3.8 706 2.9 536

3rd Dam

WBF Melodic GP-82

7-11 2x 365d 20880 3.9 821 3.1 647

Four-Of-A-Kind Eland-ET

17002605 Excellent-94 *TV *TL

PTA -580M +15F -33P 99R 1/10

PTA +.58T +.01UDC +1.03FLC GTPI +1253G

Overton-Acres Int Marley

121976727 Good-79 @ 3-04

4-07 3x 305d 26220 3.5 905 3.0 782

2-02 2x 365d 20760 3.5 729 3.2 654

3-05 2x 355d 19850 3.7 729 3.1 621

LOT 543

SUNNY-HILLVUE SANC ELLIEMAY

138596585

Born: June 8, 2007

Fresh: March 8, 2010

VT-Pone-View Lee Sancho-ET

130110332 Excellent-95

PTA -584M +28F -12P 93R 1/10

PTA +2.5PL 2.86SCS -0.1DPR

PTA +.82T +.95UDC +.35FLC 83R 1/10

TPI +1499

Oldmt Inquirer Ellie

52379106 Good Plus-80 @ 2-10

2-04 2x 337d 20970 3.2 670 3.0 622

3rd Dam

Oldmt Roebuck Ellie GP-83

4-05 2x 365d 30270 2.9 867 2.6 793

Life: 1426d 102670 2.9 2998 2.7 2765

Summershade Inquirer-ET

6483076C EX-CAN EXTRA'00 *TV *TL

PTA -33M -13F +0P 99R 1/10

PTA +.39T +.43UDC -.40FLC GTPI +1198G

Oldmt Aaron Ellen

130228934 Very Good-87 VVVVV

3-04 2x 365d 32200 3.6 1173 3.1 997

2-04 2x 285d 18340 3.1 577 3.2 596

LOT 544

SUNNY-HILLVUE MK CONSTANCE

138591656 Good Plus-82 @ 2-06

Born: June 17, 2007

2-02 2x 190d 10070 3.8 386 3.2 319 RIP

Milking 48 lbs/day 4.5%F

Bred: Jan. 22, 2010 to Klassic Big Time-ET

Markwell Kite-ET

128460878 EX-CAN *RC *TV *TL

PTA -1269M -27F -40P 99R 1/10

PTA -4.4PL 3.14SCS -1.9DPR

PTA +1.97T +1.28UDC -.33FLC 99R 1/10

GTPI +853G

Sunny-Hillvue Dund Cherish

136541404 Very Good-85 @ 4-06

3-10 2x 305d 21437 4.1 874 3.1 671 RIP

3-00 2x 287d 18090 3.8 685 3.3 590

2-00 2x 280d 14670 4.2 622 3.3 479

Sells as Lot 441

3rd Dam

Sunny-Hillvue HHR Colette EX-91 EEEEE 3E

6-08 2x 279d 24810 3.5 879 2.9 730

Life: 1650d 114050 3.6 4092 2.9 3362

4th Dam

Sunny-Hillvue Composite-ET VG-89 VVVVE

4-10 2x 355d 25458 4.6 1155 3.2 817

Life: 2104d 139768 4.1 5670 3.3 4547

Regancrest Dundee-ET

127640114 Excellent-95 *TV *TL

PTA -419M -24F -8P 99R 1/10

PTA +2.13T +2.28UDC +.93FLC GTPI +1325G

Sunny-Hillvue CK Cassina

134829650 Good Plus-83

4-01 2x 330d 20340 4.8 983 3.2 661

2-00 2x 321d 17780 3.6 639 3.2 566

3-02 2x 285d 17290 4.0 697 3.1 544